



ST. MARY'S  
UNIVERSITY

## Digital Commons at St. Mary's University

---

Gold & Blue

Gold and Blue

---

Winter 2010

### Gold & Blue, Winter 2010

St. Mary's University- San Antonio, Texas

Follow this and additional works at: <https://commons.stmarytx.edu/goldblue>

---

#### Recommended Citation

St. Mary's University- San Antonio, Texas, "Gold & Blue, Winter 2010" (2010). *Gold & Blue*. 58.  
<https://commons.stmarytx.edu/goldblue/58>

This Book is brought to you for free and open access by the Gold and Blue at Digital Commons at St. Mary's University. It has been accepted for inclusion in Gold & Blue by an authorized administrator of Digital Commons at St. Mary's University. For more information, please contact [egoode@stmarytx.edu](mailto:egoode@stmarytx.edu), [sfowler@stmarytx.edu](mailto:sfowler@stmarytx.edu).

WINTER 2010

# ST. MARY'S

U N I V E R S I T Y

Gold & Blue

When Stepping Stones Become Milestones  
Newest Deans Reflect on Their Schools' Futures  
Catalyst in the Classroom  
Delivering on Our Promise  
2008-2009 Honor Roll of Donors



### *On the front cover:*

Side-by-side with students and coworkers, Art Vega, Ph.D., was one of the nearly 550 people who volunteered more than 2,600 hours of community service during this January's Continuing the Heritage day of service. But rolling up his sleeves and getting his hands dirty isn't only a semi-annual happening for Vega.

Undergraduates and graduates who visit his office in St. Louis Hall know Vega's involvement in the community began long ago – they see proof in his lifetime collection of political stickers, photographs with legislators and dignitaries, and prints bought from grassroots artists. See for yourself on page 16 why the political science professor's office is a source of inspiration not only for him, but for the young people who walk through his door.

For these reasons and more, Art Vega, who is also the director of the master's public administration program, is a St. Mary's icon. His take on public administration and political science comes from a refreshing mix of academia, elbow grease and rock 'n' roll. So whether he is teaching current events or painting a house in the University Park neighborhood, Art Vega knows that when it comes to change, John Lennon said it best: "A dream you dream alone is only a dream. A dream you dream together is reality."

#### PRESIDENT

Charles L. Cotrell, Ph.D.  
(B.A. '62, M.A. '64)

#### UNIVERSITY ADVANCEMENT VICE PRESIDENT

Thomas B. Galvin (M.P.A. '04)

#### CHIEF OF STAFF AND COMMUNICATIONS

Dianne Pipes

#### EXECUTIVE EDITOR

Candace J. Kuebker (B.A. '78)

#### ASSOCIATE EDITOR

Nicolette Good

#### PUBLICATIONS DIRECTOR

Steve Weed

#### PHOTOGRAPHY

Melanie Rush Davis

Jeff Huehn

Tommy Hultgren

#### CONTRIBUTORS

Beth Barbee

Jessie Casares

Lauren Madrid

Lucha Ramey

Derek Smolik

#### WEB CONTENT

Jake Salazar

*(denotes degree from St. Mary's University)*

*Gold & Blue* is produced for alumni and friends three times a year by the Office of University Communications.

Contents © 2010 by St. Mary's University. All rights reserved.

---

## ST. MARY'S UNIVERSITY



### MISSION

St. Mary's University,  
as a Catholic Marianist University,  
fosters the formation of people in faith  
and educates leaders for the common good  
through community,  
integrated liberal arts and professional education,  
and academic excellence.



# CONTENTS

2

## News From Around the Grove

8

## When Stepping Stones Become Milestones

*by Nicolette Good*

10

## In Charge and Taking Charge

St. Mary's Newest Deans Reflect on Their Schools' Futures

*by Tanuja Singh, Ph.D., and Winston Erevelles, Ph.D.*

14

## Catalyst in the Classroom

*by Larissa Luna*

16

## Office Politick

Spotlight on Art Vega, Ph.D.

17

## Class Notes and Notables

### In Memoriam

22

## President's Message

Delivering on Our Promise

*by Charles L. Cotrell, Ph.D.*

24

## 2008-2009 Honor Roll of Donors

36

## Winning Teams Build Winning Traditions

Extending the Tradition of Excellence

## From the Editor

With their first semesters at St. Mary's under their belts, it seemed like a good time to hear from our newest deans, Tanuja Singh, Ph.D., and Winston Erevelles, Ph.D., who are leading the Bill Greehey School of Business and the School of Science, Engineering and Technology, respectively. They both have exciting plans for their schools, including outreach programs that extend into the neighborhood and around the globe, and they're interested in what graduates of the schools they lead have to say.

Sadly in our nation's past, the integration of African-Americans into our schools was slow in coming, even after the 1954 Supreme Court decision in *Brown v. Board of Education*. In fact, integration didn't gain much traction until civil rights actions such as lunch counter sit-ins, the Freedom Rides, the March on Washington in August 1963 during which Martin Luther King Jr. gave his famous "I Have a Dream" speech, and the signing by President Lyndon Johnson of the Civil Rights Act of 1964. Before and during those turbulent years, in small but significant steps, St. Mary's was breaking the color barrier. Siblings Robert and Charles Brown are part of that St. Mary's history; so, too, were Maurice Harris and Hattie Elam Briscoe and others (see page 8).

Building an educated, adaptable workforce is a critical, emerging need in our country and, indeed, around the world. Alumna Larissa Luna may be just one teacher in one school, but the steps she's taking to build a college-going culture among her third-graders is important, and may serve as a model of success for educators everywhere.

Service is a core tenant of St. Mary's mission, and Political Science Professor Art Vega, Ph.D., lives and breathes it. He's on the front cover and in his very cool office on page 16.

St. Mary's couldn't continue its mission of providing education steeped in Catholic and Marianist traditions without the help of alumni and friends who continue to support the University's vision for the future. In this, our Annual Report edition of *Gold & Blue*, we extend sincere thanks to all of you.

— Candy Kuebker





# NEWS

## FROM AROUND THE GROVE

### Want More News? Go Online



**Photo Albums:**  
**Founders Hall Dedication**

**President's Annual  
Thank You Event**

**Athletics Hall of Fame**

**MOAS Simulates International  
Policy-Making**

**Alumni Leaders Teach Business  
to Students**

**MALDEF Honors Terán**

**Soccer Players Honored by the  
Heartland Conference**

[www.stmarytx.edu](http://www.stmarytx.edu)

### SHORT SUBJECTS

#### Simply the Best for Women

*The Princeton Review* has again ranked the Bill Greehey School of Business and its M.B.A. program in the top 10 nationally for "Greatest Opportunity for Women." *The Best 301 Business Schools: 2010 Edition* came out in October. This is the third year in a row that the Bill Greehey School of Business has been recognized, and this year the school moved up two slots to number six. The Bill Greehey School of Business is also the only school in the Southwest in this category. The honor comes as St. Mary's M.B.A. program celebrates its 50th anniversary.



#### Texas Supreme Court Cases on iTunes U

Since 2006, St. Mary's School of Law and the Supreme Court of Texas have partnered to provide the Court's oral arguments to the public through access to live and archived webcasts.

Now, the archived arguments are available on iTunes U.

In all, nearly 400 video, audio and transcript tracks are available for public consumption. This service is provided by St. Mary's School of Law and the Supreme Court of Texas for students, the legal community and the general public.

Before the arguments are posted on iTunes U, the live webcasts are available on the law school's website, [www.stmarytx.edu/law](http://www.stmarytx.edu/law), and recordings are usually posted within a few hours of the oral argument. The St. Mary's School of Law and Supreme Court of Texas iTunes U content can be found at [www.stmarytx.edu/itunesu](http://www.stmarytx.edu/itunesu).

#### St. Mary's Helps Local Businesses with Grant

St. Mary's has been selected to participate in an Internal Revenue Service grant-funded pilot program to provide federal income tax assistance to micro-entrepreneurial businesses in the San Antonio area. St. Mary's is partnering with the School of Law, the City of San Antonio and Catholic Charities in this endeavor. The program is an extension of the

#### TOMS Shoes Founder Energizes Crowd

An enthusiastic group of more than 1,000 mostly college and high school students gathered in Bill Greehey Arena to hear Blake Mycoskie, philanthropist, founder and Chief Shoe Giver of TOMS Shoes Inc., speak as part of this year's Lin Great Speakers Series. Mycoskie told the audience how he began TOMS' "one for one" business model to provide shoes to needy children. In advance of Mycoskie's appearance, St. Mary's students sold nearly 200 pairs of TOMS shoes on campus in support of his efforts. More than 20 years ago, Trustee Vincent Lin and his family endowed the Lin Great Speakers Series, thus enabling St. Mary's to invite to campus inspiring speakers such as Mycoskie, whose form of social entrepreneurship resonates with St. Mary's mission and students.



Mycoskie (top center) surrounded by St. Mary's and high school students sporting their TOMS shoes.

## Enthusiastic Response to Hall Opening

In November, Vice President of Mission and Identity Rev. Rudy Vela, S.M., D.Min. (B.A. '76), and Assistant Provincial Rev. Jim Fitz, S.M., blessed the campus' newest residence hall. Faculty, staff and students joined President Charles L. Cotrell and Board Chairman Robert Elizondo (B.S. '67) in celebrating the dedication and blessing of Founders Hall. The new coed, freshman-only residence hall opened at the start of the fall semester. The 81,000 square-foot hall features suite-style living and an open courtyard, both of which encourage resident interaction. The hall's modern features include a wireless cyber café, two Internet and cable connections per room and an online laundry monitoring system.



Courtyard at Founders Hall

Volunteer Income Tax Assistance (VITA) program, and the San Antonio coalition is one of only 15 programs funded nationwide. The grant enables the University to hire students to process the tax returns.

According to St. Mary's Accounting Chair Tom Madison, Ph.D., because of the expertise and collaboration that exists between the partners, this could be a continuing program for the benefit of small businesses in San Antonio and the West side.

## Exchange Begins with Chinese Law School

St. Mary's School of Law Dean Charles E. Cantú has established a new study abroad program, called the St. Mary's Institute on Chinese Law and Business. It will include five courses over four weeks taught by St. Mary's professors in Beijing at The Law School of Beihang University. Through business-related courses, field trips and guest speakers, the Institute will introduce students to the key features of the Chinese legal system and the instruments of international and domestic law governing cross-border sales of goods, protection of intellectual property and investments.

An official agreement signed between St. Mary's School of Law and The Law School of Beihang University includes student and faculty exchanges. The first class of St. Mary's students will be in Beijing this summer. They will primarily study Chinese law and commercial transactions with classes on international commercial arbitration, doing business in China and international intellectual property law.

China's two largest law firms, both of which are involved in extensive Chinese and international legal practice, have agreed to place St. Mary's students with internship positions.



## Ethical Dilemmas Debated on Campus

St. Mary's hosted the 12th Annual Texas Regional Ethics Bowl this past fall in which 20 teams from 13 universities and colleges debated ethical questions. Topics ranged from using off-label prescription drugs to consuming synthetically-produced meat. Student teams, including two from St. Mary's, were judged by representatives from companies such as Dell, Boeing and Waste Management Inc. Observers included the dean of the Meinders School of Business at Oklahoma City University.

## Law Students Launch Newspaper

This past fall, St. Mary's School of Law students began a new venture to increase school pride among students by starting a student-run newspaper. Using the printing resources and some design staff from *The Rattler* student newspaper, the Student Bar Association has expanded its newsletter, *The Legal Minute*, to a tabloid that will be printed twice a semester and distributed on the law campus. The paper includes sections on campus news, Catholic identity, commentary written by both faculty and students and a spotlight on faculty.

## Searching for Good in a Bad Economy

The President's Peace Commission's fall program explored whether the current recession's impact on the political, economic and cultural climate of the country is necessarily bad, and whether, in a worsening economy, making changes in our values and lifestyles offers hope in this troubling time.

During the two-day program, St. Mary's faculty, staff and students, as well as leaders from area universities, the City of San Antonio, businesses and government, discussed new solutions for empowering communities, sustainability, economic woes and good mental health, social entrepreneurship and global economic initiatives.



## Consul Office Moving to St. Mary's

St. Mary's has been named host site for the Office of the Honorary Consul of Spain. Alumnus Rolando Pablos (B.A. '92, J.D. '98), past chairman of the board of the San Antonio Hispanic Chamber of Commerce, is the Honorary Consul. In that capacity, he will partner with St. Mary's to expand the University's international efforts in Spain and Mexico.

Through the assistance of the Office of the Honorary Consul, St. Mary's will help students customize their internship programs, work with international business leaders and expand their learning experiences.

## NEWSMAKERS

### New U.S. Marianist Provincial Council Named

The Marianist Province of the United States, located in St. Louis and which leads the implementation of the Province's plans for growth and development of Marianist life, has announced the appointment of its Provincial Council.

Replacing St. Mary's Chancellor and Trustee Brother Stephen Glodek, S.M., as Provincial is the Rev. Martin A. Solma, S.M.; Brother Joseph Kamis, S.M., will replace St. Mary's Trustee, the Rev. James Fitz, S.M., as Assistant Provincial.

In addition, the three Province Offices will be filled by the Rev. William Meyer, S.M. (B.A. '71), Religious Life; Brother Edward Brink, S.M., Education; and Rev. Paul Marshall, S.M., Temporalities (assisted by Brother Joe Markel, S.M., as Province Treasurer).

### Law Graduates Hervey and McCaul Celebrated

St. Mary's School of Law honored Texas Court of Criminal Appeals Judge Barbara Parker Hervey (J.D. '79) and U.S. Rep. Michael McCaul (J.D. '87), who represents Texas' 10th District, as the 2009 St. Mary's Distinguished Law Graduates during its annual awards dinner. The award recognizes two individuals with

Law Dean Charles Cantú, McCaul, Hervey, President Charles L. Cotrell, and Law Alumni Association President Jeff Davis (J.D. '91)



U.S. Marianist Provincial Brother Stephen Glodek, S.M., Bautista and Assistant Provincial and Trustee Rev. Jim Fitz, S.M.

### Bautista Makes Perpetual Vows

A native of Hawaii, Brother Dennis Bautista, S.M., Ph.D., professed perpetual vows in the Society of Mary during a special Mass at Our Lady of Guadalupe Chapel on St. Mary's campus in October. The Mass included traditional Hawaiian chants, prayers and songs. Brother Dennis earned a bachelor's degree in communications from Chaminade University of Honolulu and a master's in communications and a doctorate in interdisciplinary intercultural communication from Washington State University. As an aspirant, he ministered in the St. Mary's Office of Communications. A member of Casa Maria Community on St. Mary's campus, Brother Dennis teaches in the Department of English-Communication Studies and serves as faculty adviser for the *The Rattler* student newspaper.

outstanding achievements in the legal profession and dedicated service to St. Mary's School of Law.

Prior to her election to the Texas Court of Criminal Appeals in 2000, Hervey worked in private practice before moving to the Bexar County District Attorney's Office, where she spent 16 years as an assistant criminal district attorney. She is an adjunct professor at St. Mary's School of Law, past president of the St. Mary's Law Alumni Association, and a member of the State Bar of Texas, Bexar County Women's Bar Association and Bexar County Republican Women.

Michael McCaul is serving his third

term representing Texas' 10th District, which stretches from Austin to the Houston suburbs. He is the ranking member of the Homeland Security Committee's Intelligence Subcommittee and also serves on the Committee on Foreign Affairs, and as an Assistant Whip for the 111th Congress. Previously, McCaul was Chief of Counter Terrorism and National Security in the U.S. Attorney's Office in Texas, as Texas Deputy Attorney General under current U.S. Sen. John Cornyn (J.D. '77), and was a federal prosecutor in the Department of Justice in Washington, D.C.



## Lessons in Legacy: Marianist Heritage Award

The 30th Annual Marianist Heritage Mass, held each January and followed by a luncheon and awards ceremony, reminds the University community of its commitment to St. Mary's legacy, mission and traditions. St. Mary's each year



Escobedo and Martinez



Willis, Duarte and Covarrubias

recognizes individuals who exemplify the Marianist heritage and charism. The 2010 Marianist Heritage Awards were presented to former Chairman of the Board of Trustees Ruben Escobedo (B.B.A. '60), and International Business Professor Zaida Martinez, Ph.D., of the Bill Greehey School of Business. Recognized with the Marianist Student Leadership Awards were undergraduate students Anahi G. Covarrubias and Francesanne Willis, and graduate student David W. Duarte.

## Faculty Members Awarded for Making Impact

The St. Mary's Faculty Appreciation Dinner, sponsored by the St. Mary's University Alumni Association in January, honored six exceptional faculty members for outstanding teaching, research and mentoring of students, and delivering on St. Mary's promise of providing its students with a values-centered, quality education. The 2009-2010 recipients of the Distinguished Faculty Awards are: Associate Professor of Finance Adrian Cowan, Ph.D., Bill Greehey School of Business; Professor of History Daniel

Bjork, Ph.D., and Assistant Professor of Theology Sister Anne O'Leary, PBVM, Ph.D., both of the School of Humanities and Social Sciences; Assistant Professor of Mathematics Michael Lecocke, Ph.D. (B.S. '99), School of Science, Engineering and Technology; Associate Professor of Theology Daniel Thompson, Ph.D., Graduate School; and Clinical Law Professor Stephanie Stevens (B.A. '87, J.D. '91), School of Law. This year and for the first time, an Undergraduate Research Mentor Award was presented to Associate History Professor Theresa Van Hoy, Ph.D., for her work mentoring students.



Back row (left to right) are Lecocke, Thompson and Bjork; and seated are Stevens, Cowan, O'Leary and Van Hoy

## The Next Chapter for Stewardship: The Gary J. Thompson Memorial Scholarship Fund

When St. Mary's beloved Bookstore Manager Gary Thompson passed away in November of 2008 after battling cancer, it was a sad loss to his family and the University community he had served selflessly for so many years.

Thompson had more than 40 years of experience in the college bookstore industry, half of them at St. Mary's. His joyful spirit, generous nature and strong moral character served as an inspiration and benchmark for everyone who interacted with him. His subtle leadership skills and his knack for making everyone feel equally important—not to mention his affable personality and constant smile—endeared him to faculty, staff and generations of students. Above all, Thompson was completely dedicated to enhancing all students' educational experience at St. Mary's.

When the Thompson family approached St. Mary's about establishing a scholarship in Gary's memory, it was his love of books that prevailed. The Gary J. Thompson Memorial Scholarship Fund was awarded for the first time last fall to three undergraduate freshmen and three first-year law students, specifically for the recipients' textbook expenses. The Thompson family plans to build the fund to endowment level so that awards can be made from accrued interest. In the meantime, however, money is being raised and awarded from proceeds of an annual golf tournament organized by Gary's family with assistance from the Office of University Development. Gary was an avid golfer, so it made sense to Carla, his wife of 40 years, and his children, Justin (B.B.A. '03, M.S. '09), and Casey (B.A. '99), to raise scholarship dollars while doing something Gary loved. Eventually the family hopes the Gary J. Thompson Memorial Scholarship Fund will help many students each semester with their textbook expenses.

Thanks to the Thompsons, Gary's memory is honored each semester through the scholarship.

You, too, can set up an endowed scholarship or make a contribution to the Gary J. Thompson Memorial Scholarship Fund by calling the Office of University Development at (210) 436-3718 or by sending an e-mail to [giving@stmarytx.edu](mailto:giving@stmarytx.edu).



## GOOD DEEDS

### Alumni Giving Forward – A Transformation, Not a Transaction

As of Jan. 1, 2010, the St. Mary's Fund's Giving Forward campaign had raised \$220,000 from generous alumni in support of the University's mission.

"Giving Forward" transcends the notion of giving back to St. Mary's. Giving back is a transaction that takes place out of obligation and in return for something received. "Giving Forward" is different. When you give forward, you are contributing to a purpose—the future of St. Mary's students, who like you, have goals of making a difference in their part of the world.

Soon the spring Phonathon will begin, so stay close to the phone! Donations from alumni are more important now than ever. With nearly 30,000 alumni, small donations make a big impact. The campaign ends on May 31. To make a gift, contact us at (210) 436-3303 or send an e-mail to [giving@stmarytx.edu](mailto:giving@stmarytx.edu).

### Gifts Fill Cost Gap for Students

As generous gifts from individuals, corporations, trusts and foundations flow into the University, scholarship assistance to students continues to grow, keeping a St. Mary's education accessible and affordable.

To benefit undergraduate students, recent gifts include:

- \$50,000 from The USAA Foundation for the general scholarship fund
- Nearly \$25,000 from A. David Mangelsdorff, Ph.D. (M.A. '80), for a professorship in International Relations
- \$20,000 from USAA Federal Savings Bank for the Wounded Warriors Program at the Brooke Army Medical Complex
- \$15,000 for scholarships from the Baptist Health Foundation of San Antonio
- \$14,000 to the South Texas Chapter Risk & Insurance Management Society (RIMS) Scholarship from South Texas Chapter RIMS Inc.
- \$10,000 from Union Pacific Railroad for scholarships for students studying business
- \$5,000 to the Alumni Association Endowed Scholarship Fund from the Laredo Alumni Chapter
- \$5,000 grant from Wells Fargo Bank Texas N.A. for the Service Learning Center

At the School of Law, several gifts will help students in their pursuit of legal education:

- \$200,000 anonymous gift to the Center for Terrorism Law
- \$25,000 pledged by School of Law Dean Charles E. Cantú to endow a scholarship
- \$25,000 from the Mays family to endow a scholarship in honor of 2009 Distinguished Law Graduate U.S. Rep. Michael McCaul (J.D. '87)

- \$25,000 from Shelby Jordan (B.B.A. '70, J.D. '73) for the Shelby and Becky Jordan Law Scholarship
- \$15,000 from the Argo Group U.S. for the St. Mary's Institute on Chinese Law and Business

## SPORTS CORNER

### Basketball Heating Up

Kevin Kotzur, a freshman from La Vernia, has wasted no time in making his mark on the hardwood for the Rattlers. In his first season with the team, Kotzur has been named Heartland Conference Player of the Week three times. As of Jan. 25, he had notched four double doubles in his short collegiate career, averaging 15.9 points and 7.4 rebounds per game.

Providing leadership at the point and impressive scoring numbers is Curtis Mitchell, a senior from Milwaukee, with 13.5 points and nearly 5 assists per contest. Darren Lee, another senior guard who hails from Stockton, Calif., is close behind with 10.1 points per game. Freshman Brad Hubenak from Kennedale rounds out the offense with 7.4 points and 4.6 rebounds per game. At press time, the Rattlers had won four straight and stood 7-4 in conference play.

Upperclassmen are providing the spark for the women's team that had won eight straight games as of press time. Senior guard and El Paso native Chastity Noble leads the women's team with 13.6 points per game, and

### Two New Pianos Make a "Grand" Entrance

The Richard Levy family recently gave a Baldwin grand piano to the St. Mary's University music department, the second gesture of this type during the fall semester of 2009.

Another grand piano, a Steinway originally purchased for \$61,700, was sold to the department for less than 10 percent of its value. The landmark possession belonged to the Rev. Albert Verbrugghe, a Catholic priest living in San Antonio's military officers' Air Force Village retirement community before his passing last August.

Verbrugghe's wish was that the concert-quality, burl wood instrument be given to a Catholic institution, and because the executors of his estate had strong familial ties with the Marianists, St. Mary's was the natural choice.

The music department now has five grand pianos, including Steinways, Baldwins and Kawais. The Department of Music plans to host a master performer at a dedicatory recital this spring.

junior guard Kristin Williams, who hails from Kansas City, Mo., is close behind with 10.9 points and 9.3 rebounds per contest. The women were perched near the top of the Heartland Conference standings at press time, one game out of first place. ■



Carter, Grimes and Meyer

### Meet St. Mary's Three New Athletics Hall of Famers

The St. Mary's University Athletics Hall of Fame welcomed baseball player Aaron Carter (B.A. '99), volleyball player Ginger (Grimes) Whisenton (B.A. '97) and basketball player and coach Buddy Meyer (B.A. '65) on Jan. 15 at a dinner and induction ceremony held in Bill Greehey Arena. Adding to the festivities was Gary Cunningham, Ph.D., former UCLA Bruins player and head basketball coach, who gave the keynote address.

Carter, a native of Adkins, played for the Rattlers from 1994 to 1997 and was one of the most decorated athletes in the history of the baseball program. He earned All-American honors, was a three-time All-Heart of Texas honoree and was named Heart of Texas Conference Player of the Year in 1996. He is the Rattlers' all-time leader in wins, complete games and strikeouts for a career. In 1996 he set the school records with a 1.23 earned run average, 15 wins, 14 complete games, and a .155 opponents' batting average. Carter owns four of the top 10 single-season earned run marks in St. Mary's history.

Whisenton, a native of Poth, was a standout for the volleyball program from 1993 to 1996, one of the most successful runs in the history of the program. She earned All-American honors three times, was a four-time all-region honoree, was a three-time All-Heart of Texas pick and twice was named Heart of Texas Conference Player of the Year. She was also named Heart of Texas Freshman of the Year in 1993. She set the school record for attack percentage in a single season with a .341 mark in 1994. Her 1,032 assists in 1995 was a school record at the time and is still one of the top marks in school history. She helped lead the Rattlers to three NAIA National Tournament appearances, four Southwest Region Tournament berths and a fifth-place finish at the NAIA National Tournament in 1994.

Meyer, a native of Morgantown, W.V., was a member of the St. Mary's family for 41 years as a player, assistant coach and head coach. He started in 1961 as a player, earning All-American honors while leading the Rattlers to their first-ever NAIA National Tournament appearance. His 1,581 points scored during his career still ranks fifth on the Rattlers all-time list. In 1968, he returned to St. Mary's as an assistant coach. In 1978, Meyer took over head coaching duties and started a historic run of success, which in his 27 years included 530 wins against just 252 losses, 13 NAIA National Tournament appearances, 17 conference championships and the 1989 NAIA National Championship. He was named conference Coach of the Year 11 times and was the NAIA National Coach of the Year in 1989.



Kotzur



Mitchell



Lee

Hubenak



Noble



Williams



# When Stepping Stones Become Milestones

by Nicolette Good, Communications Coordinator

Coming of age during a time when riots at integrated schools often made headlines, two African-American siblings faced considerable challenges before eventually attending St. Mary's University. But family support based on strong values enabled them to excel in high school, in college, and in the careers that took root while studying in St. Mary's ROTC program.

Less than three miles from St. Mary's campus, Robert E. Brown III (B.B.A. '61) and his younger brother Charles Q. Brown (B.B.A. '63) grew up in a very modest household. Their father had only an eighth grade education but dreamt of sending his sons to college, sometimes working several jobs just to pay tuition. Robert turned down a \$300 scholarship in 1958 from a historically black institution to attend St. Mary's.

"Even though private school was more expensive," explains the eldest brother Robert, "going to school here at home and working was more affordable than going to a public school out of town."

Growing up, both brothers recall playing in the streets with children of all races, and in a game of tag or touch football, skin color was not an issue. Beyond their neighborhood boundaries, the climate was markedly different.

"When we were kids," Robert recalls, "we went to the movies at the Majestic and the Empire Theatre. Of course, we had to enter off College Street, which was behind the main Houston Street entrance. Both Charles and I were going to St. Mary's before that was changed."

The two may have sat in the balcony at the segregated movie theatres during college, but the 1954 Supreme Court case of *Brown v. Board of Education* allowed Charles to attend

the newly integrated Jefferson High School.

"I wanted to go to Jefferson High School even before I had the opportunity to," says Charles Brown, who was a fan of the powerful Jefferson Mustang gridiron squads. "That was where I wanted to go, and my parents never really said, 'You should go to Phillis Wheatley,'" San Antonio's only public black high school and the school Robert attended for four years on the other side of town. "They were just supportive of my desire."

Charles was a clear leader in Jefferson's second integrated graduating class—he played varsity football, belonged to the National Honor Society, and served on the student council. But Charles' and Robert's commitment to education didn't stop there.

As they each pursued bachelor of business administration degrees in accounting, the siblings also excelled in uniform.

The Browns found a home in St. Mary's Army ROTC program, a field artillery branch that at the time was required of all non-veterans. Robert was the first African-American in the advanced course of the Army ROTC; the first African-American in the University's Flight Training class; and the first African-American commissioned from St. Mary's ROTC program.

As Robert took on so many "firsts," his younger brother took them on as "seconds."

Charles was the first African-American to serve as a cadet corps staff officer, and in 1963, he became the second African-American commissioned from St. Mary's ROTC as a 2nd Lieutenant in the U.S. Army.



Robert E. Brown III (B.B.A. '61), at top, and his younger brother Charles Q. Brown (B.B.A. '63)

Both graduates of the 1960s, the Browns began their military careers serving twice in the Vietnam War.

"What you got in ROTC was camaraderie," says Robert when looking back on how his time at St. Mary's helped him abroad. "There was a sense of duty, a sense that we were willing to do whatever we were called upon to do."

The encouragement and values their parents gave them continued at St. Mary's where the brothers were pushed to develop the leadership skills that helped them excel personally and professionally. Both Robert and Charles led 30-year military careers that included commanding artillery battalions in Germany and retiring as colonels. ■

**1953** Brother Vincent Gray becomes the first African-American Marianist to graduate from St. Mary's.

**1963** Rho Beta Gamma is the first social fraternity to recruit an African-American student, Charles Brown.

**1963** St. Mary's becomes fully coeducational. Martin Luther King Jr. gives his "I Have a Dream" speech.



**It wasn't until the early 1950s that African-Americans began appearing in St. Mary's enrollment books, but once they did, their accomplishments broke records—both personal and campus-wide.**



Gus Pflugmacher, Harris, Don Mensendick

### Breaking the Color Barrier

When *Brown v. Board of Education* declared racial segregation in public schools unconstitutional, African-American students had already been attending the University for several years. In that same decade, St. Mary's Coach Jim Heiser recruited the first African-American athletes to campus who would put Rattler athletics on the map.

"Story has it," recalls Herman A. "Buddy" Meyer Jr. (B.A. '65), former coach, "that Coach Heiser was driving through the streets of Bryan, Texas, when he saw this tall guy sitting on the corner. He was a mammoth of a person – six foot eight and 250-260 pounds."

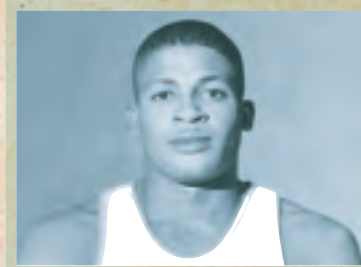
The young man was Maurice Harris (B.A. '85), who in 1957 not only became one of the first African-American student-athletes at St. Mary's but finished first in rebounding and second in scoring his freshman year. With his teammate Winston Miles (B.A. '62), he would also break the color barrier in the Big State Conference.



Briscoe

### Nothing But the Truth

At age 40, Hattie Elam Briscoe (J.D. '56) enrolled in the School of Law, only seven years after women were even allowed to sit on juries. Formerly a cosmetologist and then a teacher at the all-black Phillis Wheatley High School, she excelled in law school, becoming the first African-American School of Law graduate from St. Mary's and later becoming the first African-American female attorney in Bexar County.



Sampson

### Nothing But Net

Kenneth L. Sampson (B.A. '65) became the first Rattler basketball player to score more than 500 points in a season. Named to the Catholic All-American Team in 1961, Sampson finished his St. Mary's career with 1,776 points—the most in school history. He was named to the St. Mary's University Athletics Hall of Fame Class of 1984.

### "Treat Negroes Equally, Rho Beta Asks Joske's"

**The Rattler Vol. 42 No. 25  
Friday, May 6, 1960**

Sympathetic St. Mary's students have been the first organized white group to ask Joske's, a local department store, to offer Negroes complete integration at their lunch counters. More than two dozen members of Rho Beta Gamma fraternity presented a petition bearing the names of just over 30 StMU students ... Rho Beta president-elect Bob Burke presented the petition.

### "School, Frat Lauded"

**The Rattler Vol. 44 No. 19  
Friday, March 24, 1961**

The University should be extremely proud of those students and faculty members who dared to walk out of Scholtz's Garten in Austin last week when one member of the group was refused service simply because of his color.

This concern for the inherent dignity of all men should have made all St. Mary's men feel a tingle of pride. Artificial distinctions have no place in a real community devoted to intellectual growth.

The University should also be extremely proud of the action of the local frat, which admitted a Negro to its membership last week. This was the first frat in the history of the school to do so. It is certainly a fine reflection on the fraternity and on the University.

**1967** Thurgood Marshall is appointed as the first African-American Justice on the Supreme Court of the United States.

**1970** St. Mary's holds its first "Negro History Week" in February; the tradition has carried through today (though now held in January).



## Singh and Erevelles position their schools' futures

# IN CHARGE AND

by Tanuja Singh, Ph.D., Dean

**A**s the new dean of the Bill Greehey School of Business, it is my distinct privilege to share with you our plans for the future and your role in making it happen. I am thrilled to be a part of an environment that cares so deeply about its students and the community. It is gratifying to see that not only are our students and faculty on the cutting edge of today's business practices, they put these skills to work for the larger community. True to St. Mary's mission, effective leadership requires an active engagement in the community and a commitment to giving back. In other words, it requires an adherence to the core values that distinguish the University. I was attracted to St. Mary's and to the Bill Greehey School of Business because of these values, and I believe that we are in a unique position to establish ourselves as one of the country's premier business schools.

### A precedent of growth

Temperamentally, I have always been drawn to new challenges and innovative ideas. That is why I first decided to complete a bachelor's and master's degree in physics; I enjoyed the intellectual challenge of the world of science and technology. But I also tell people that by nature I am a dreamer and a risk-taker, which can explain why I decided to change my career. I wanted to move from the subatomic realm to the global one.

Since childhood I have been captivated by the topic of globalization—how countries develop and what makes one more successful than its neighbor. I have now been practicing in the fields of international strategy, marketing research and electronic commerce for almost 16 years. As professor and chair of the marketing department at Northern

Illinois University in DeKalb, Ill., I helped develop the globalization model for the College of Business and brought experiential knowledge to the classroom by working with global and Fortune 500 companies.

After 13 years at Northern Illinois, I was poised to take on another exciting challenge—to lead the Bill Greehey School of Business to a level of national prominence and academic excellence. I am confident that we can accomplish our goals because of our faculty's unique skills, a talented student body, the evolving demographics of our target population, and the economic and technological environment in which we operate.

### An adaptive model of education

These are exciting times for business schools around the country and indeed around the globe. The educational environment today is profoundly impacted by globalization, shifting demographics, economic interdependence among countries, technology advancements, and a growing emphasis on social responsibility and sustainability. These changes bring with them significant opportunities and rewards but also pose unique challenges. At the most fundamental level, they require an adaptive model of education that is responsive, organic, and rooted in deep values.

Studies suggest that demand for management education in market economies will grow as globalization increases. Furthermore, demographic changes indicate that much of this new demand for management education will come from emerging countries such as China, India, Brazil and Russia. For example, in the year 2020, more than 60 percent of Asia and Latin

America's population will be younger than 39 years old, whereas North America will see its share of the 39-and-younger population decline to around 52 percent, according to the Global Foundation for Management Education's 2008 data. As these emerging economies invest in human capital to achieve their economic and social goals, business schools must respond by tapping into new information and technologies, and by developing innovative curricula that

continued on page 12

**Real Value, Real Values**



## Shaping a globally competitive School of Business

# TAKING CHARGE

by Winston Erevelles, Ph.D., Dean

**A**s dean of the School of Science, Engineering and Technology (SET), a role I assumed this past August, I am privileged to be a part of the St. Mary's family and honored to serve the school and the University, following in the footsteps of Anthony Kaufmann, Ph.D., veteran dean and now Dean Emeritus.

SET today is comprised of six departments: Biological Sciences, Chemistry and Biochemistry, Computer Science, Engineering,

Mathematics, and Physics and Earth Sciences. We are housed in three buildings on campus – Garni Hall, the Moody Life Sciences Building and the Richter Math-Engineering Building. I imagine these names bring back memories to many of you. Our 41 full-time faculty and seven staff members serve approximately 800 undergraduate and 100 graduate students with a range of outstanding programs. Over the course of our history, we have been the launching pad for more than 3,500 graduates who have distinguished themselves in their careers and done great things for their communities. We have an inspired and enthusiastic group of students, faculty members, staff colleagues and administrators, and I am energized by their dedication, hard work and leadership.

## Taking grand challenges head-on

SET is the scientific and technological arm of our University, and we serve as the locus for STEM (Science, Technology, Engineering and Mathematics) initiatives at St. Mary's. As a nation we have become increasingly concerned about STEM education and our ability to field a competitive workforce in the 21st century and beyond.

The impetus that Sputnik provided to a previous generation now manifests itself in a different form – today we face major problems in energy, healthcare, environmental issues, information security

and customized medicine, to cite but a few examples of areas that the National Academies and other bodies refer to as the Grand Challenges. Schools like ours, with disparate disciplines under a single umbrella, are well positioned to play a significant role in addressing these and other of today's challenges, as well as the ones we will have to address in the future. In fact, more than half of the jobs listed in a November 2009 CNN report on the "Top 50 Jobs" are in STEM and related SET majors.

In addition to the advantages of an organizational structure that fosters interdisciplinary work, SET is blessed by several distinctive advantages that we will continue to emphasize. These include small class sizes and personalized attention from the faculty; rigorous programs that combine scientific education with the liberal arts; a dedicated and experienced faculty with a passion for student mentoring; classes taught primarily by full-time faculty or select adjunct professors from industry; active learning in well-equipped laboratories; and internship and undergraduate research opportunities that enhance the student experience. We embrace and are guided by the characteristics of Marianist education that call us to educate for formation in faith; provide an integral, quality education; educate in family spirit; educate for service, justice and peace; and educate for adaptation and change. In a world beset by turmoil, these characteristics are more relevant today than ever.

## Zeroing-in on SET's future

My first months on campus have been spent in conversation with my colleagues and with our constituencies. While this dialog will be an ongoing part of our operations, it has helped set

*continued on page 12*

**On Your Mark, Get SET**

How the School of Science, Engineering and Technology is closer now than ever to *go-time*.



## Real Value, Real Values

reflect the social and economic context of these countries. As market economies develop internationally, demand for entrepreneurial talent will rise significantly and it will be the role of business schools to shape future business leaders who can build both countries and communities.

Our nationally ranked M.B.A. and undergraduate programs offer excellent tools to capitalize on these developments. Businesses are looking for talent that is knowledgeable of the global economy, is skillful in developing innovative solutions, and can hit the ground running once hired. In addition, our own country's current economic climate necessitates that students be not only skillful and experienced in domain knowledge but understand the ethical and social responsibilities of businesses.

### Inspired by mission

The Bill Greehey School of Business' mission clearly states that students graduating from the school will have qualities that emphasize ethical leadership, technical excellence, global awareness and professional orientation. We believe that student experiences must involve experiential learning with a strong emphasis on technical and technological competencies. To the students' benefit, our faculty exemplifies these values in the classroom beautifully. After all, there are not too many schools in which undergraduate students work in a real trading room and manage a \$1 million portfolio! From the Greehey Scholars Program to exciting international experiences, students have access to numerous opportunities that transform their personal and professional lives. Offerings such as the Executive Lecture series, classroom projects that require students to solve actual business problems for real organizations, a school-wide emphasis on global knowledge, and a curriculum driven by ethics and social responsibility help us provide a valuable education based on real values.

I have spent my first semester at St. Mary's assessing and evaluating our core strengths and developing strategies for attaining our vision for the future. I have consulted with faculty and staff, business leaders in the community, our strong alumni base and University administration to develop new initiatives as we move forward to our vision of academic excellence, national prominence and premier status. We agree that in the next five years, our priorities will include a strong emphasis on our M.B.A. program, emphasizing the experiential learning component in undergraduate and graduate education, embedding technical and technological competencies in all our classes, nurturing the global business component of our curriculum, and embedding the ethics and social responsibility model seamlessly into our coursework.

### Partners in progress

These efforts, of course, require that we promote ongoing interaction between the business community and the business school. It requires that we engage our alumni and supporters in our efforts, communicate our vision to our target audiences effectively, and secure financial resources that can make this vision a reality. As a first step, I traveled to China this past November to explore opportunities for student and faculty exchanges and executive training programs. I am delighted to report that so far three major universities have committed to further develop student and faculty exchanges. Also in the works is an executive education program which will serve as a forum for mutual learning and exchanging of expertise among St. Mary's faculty and global business leaders from several countries.

I have quickly realized that in addition to an excellent academic foundation our school also has a strong base of alumni and supporters who are eager to be partners in our endeavors. I have enjoyed getting to know this community of friends and supporters who will play an integral role in realizing the school's vision. Attaining our goals will not be possible without the support of University leadership and the faculty and staff of the Bill

Greehey School of Business. But most importantly, it will require a continuing commitment from our alumni and friends. I invite you to see for yourself the energy and enthusiasm that is driving our vision by getting reacquainted with the Bill Greehey School of Business today. Come join the winning team!

Dean Tanuja Singh, Ph.D., earned an M.B.A. from Millsaps College in Jackson, Miss., before completing a doctorate in Business Administration from Southern Illinois University in Carbondale. Prior to joining the Bill Greehey School of Business, she served as department chair and professor in the College of Business at Northern Illinois University in DeKalb. She was also on the business faculty at Florida Institute of Technology in Melbourne. Singh's teaching, research and consulting interests include global and cross-cultural marketing strategy, digital marketing, and public policy issues in marketing. ■

---

## On Your Mark, Get SET

the stage for school-wide planning in support of *Vision 2012*, the University's strategic plan. Our 150-year heritage and our national ranking are not serendipitous occurrences; rather, they took and will continue to take sustained effort over time. *Vision 2012* with its goals to nurture a vibrant Catholic and Marianist culture, advance academic quality and innovation, extend boundaries, assure viability, and enhance facilities and technology, helps us continue down that road of academic excellence and integrity. So, where is our focus as we contemplate our future?

■ Raise the visibility of SET so that STEM excellence and St. Mary's are synonymous in our region and beyond.

■ Build enduring, formalized relationships with our constituencies, so that we keep our finger on the pulse of the environment at all times.

- Effect recruitment and retention initiatives so that we continue to attract and graduate a viable number of quality students.

- Raise funds to support scholarships, equipment and facilities, student and faculty research projects, and outreach programs.

- Evaluate existing programs in order to ensure that they remain current, competitive, and responsive to the needs of our constituents.

- Explore new programs proactively so that we are responsive to the emerging needs of our constituencies.

- Support faculty and student research that fosters the formation of areas of excellence while adding value to the community at large.

- Implement outreach initiatives for middle and high school students and teachers in order to provide opportunities to the youth of our region and grow our STEM pipeline.

- Develop international activities and programs that project SET on the global stage through faculty and student exchange, study tours, articulation agreements and joint projects with foreign institutions.

- Plan for new, renovated and expanded SET facilities so that our school is positioned to be competitive and succeed, now and in the future.

## Poised to realize our vision

By focusing on these 10 initiatives, I believe that the School of Science, Engineering and Technology is poised to become a distinguished provider of well-prepared graduates who will assume leadership roles in the STEM workforce of the future. Our students will be educated in a challenging, caring and vibrant learning environment that is rooted in the Catholic Marianist mission and tradition. Their education will be supported by modern, well-equipped facilities and laboratories, and enhanced by the formation of cooperative alliances with industry, graduate schools and professional schools sought by our students in the pursuit of their career goals. Our

students and faculty will work together to conduct research through focused centers of excellence within the school and in partnership with other collaborating institutions. SET will be recognized as a leader in STEM outreach programming for middle and high school students in our region.

These are lofty goals and it is now time to begin the process of actualizing this vision. As I have said to many a colleague, this is not a sprint, it is a marathon! Moreover, we cannot accomplish any of this alone – we need the involvement and participation of our graduates and friends. We will be reaching out to our alumni, friends of the University, the corporate and professional community, philanthropic organizations and government agencies for partnership, guidance and support. Many individuals and agencies already support our work in so many ways, and for that I am profoundly grateful.

I am eager to hear from our SET alumni, and I look forward to working with you to strengthen our University and our school. Many good things are happening within the School of Science, Engineering and Technology and I believe that you will agree with me when I say that these are exciting times for SET.

Dean Winston Erevelles, Ph.D., has expertise in computer integrated manufacturing, robotics, manufacturing automation, rapid prototyping, reverse engineering and manufacturing processes. He is a program evaluator for engineering programs for the Accreditation Board for Engineering and Technology (ABET) and is a member of the Engineering Accreditation Commission of ABET. Erevelles has taught at Kettering University and the University of Missouri-Rolla. He received his bachelor's degree from Bangalore University in India, and both a master's degree and doctorate in Engineering Management from the University of Missouri-Rolla. Before joining St. Mary's community, he served as dean of the School of Engineering, Mathematics and Science at Robert Morris University in Pennsylvania. ■

## SET Outreach a Boost to Thousands

The faculty and students of the School of Science, Engineering and Technology have long provided outreach opportunities that benefit both our own academic community and the larger San Antonio community.

Faculty from the Department of **Biological Sciences** teaches hundreds of students each summer in the Upward Bound program that prepares at-risk students for college.

**Chemistry** faculty and students, through the American Chemical Society of Students, reach out to local elementary schools through "Chemistry in the Community," a demonstration in which undergraduates reenact amusing chemical reactions for school children with the goal of stimulating young minds about science.

**Computer Science** outreach initiatives abound. The St. Mary's San Antonio Learning & Science Academy (SALSA), aimed at 4th and 5th graders from Loma Park Elementary who come to St. Mary's campus once a week, are taught science by St. Mary's Mathematics and Physics faculty. St. Mary's Computer Game Academy invites 9th-12th graders at Memorial High School to campus weekly where they learn all aspects of computer game development. Expanding Your Horizons is a program targeting middle school and high school females to get them and keep them interested in STEM disciplines.

**Engineering** faculty, for more than a decade, have helped to direct SA BEST (Boosting Engineering, Science and Technology), a contest held annually to inspire and interest high school students in the fields of science and engineering. Another professor directs San Antonio PREP (Pre-Freshman Engineering Program), an academically intense, mathematics-based, summer enrichment program designed to develop abstract reasoning and problem solving skills in middle school and high school students with the potential to become scientists or engineers. All faculty make presentations to area high school classes.

**Mathematics** faculty leads an outreach program with the Young Women's Leadership Academy to assist in teaching lessons on SAT math problems. A group of math majors and math faculty assist with the MATHCOUNTS Competition, a national middle school coaching and competitive mathematics program that promotes mathematics achievement through fun and engaging "bee" style contests. Another faculty member coordinates St. Mary's own Math Contest, which is open to all San Antonio high schools and provides scholarships to contest winners.

The Department of **Physics'** popular Fiesta of Physics visits all middle schools in the Edgewood School District where students and faculty perform physics shows for the kids. In addition, each year the department hosts Fiesta of Physics shows on campus attended by as many as 600 school children and staffed by nearly 100 St. Mary's volunteers. Through the Society of Physics Students, the department helps local school science fairs by serving as judges for various programs.



# Catalyst in the Classroom

## Alumna charts path of success for third-graders

*Editor's note: The need for a highly educated workforce in our country is a frequent topic of discussion in the media, on the street, and in the classroom. According to the 2000 U.S. Census, less than 22 percent of San Antonio's population had earned a bachelor's degree. Research tells us that for students to move into higher education, where they have access to greater opportunities, they first must have models of success and systems of support. One St. Mary's alumna, Larissa Luna, believes that she has been called to action. Here's her story.*



**A**s a third-grade teacher at Vestal Elementary in San Antonio's Harlandale Independent School District, I see students every day struggle with factors beyond their control. With 98 percent of our students facing a variety of disadvantages, each challenge can affect their classroom performance and enthusiasm about school. The other teachers and I decided we had to spark their passion for learning—we had to show them that through education, they can reach for the stars; that they can beat the odds, first by graduating from high school, and that attaining a college education is possible for each one of them.

The Vestal Elementary teachers wanted to show the students what they can do with their lives, that their opportunities do not have to be limited by their circumstances. Many of the children in our classrooms have never even seen a university, nor do they have relatives that have attended one. We decided to make higher education a visible part of their daily experience at school. Each teacher at Vestal "adopted" a university, hanging university pennants and banners in the

cafeteria and putting brochures outside of our classroom doors so students could see what colleges are like. Every Wednesday became "college T-shirt day," a day when the students and teachers wear their adopted college T-shirts to class. In September, we held a college pep rally to introduce our universities, and each class wore their university colors. Our goal is to influence and motivate our students (and maybe even their parents) to go to college.

I've always thought that going to college is an important rite of passage, and I've shared my story with my students so they can begin to understand the importance of higher education. St. Mary's has always been a part of my life. My mother was one semester shy of graduating from St. Mary's when she had to leave the country to follow my father, who was stationed in Italy. After returning to the states, my dad decided to go back to school and attended St. Mary's, where he worked towards a bachelor's degree in education. The summer before I went to high school, I attended my third year of the Pre-freshman Engineering Program (PREP) at St.

Mary's. (Ed.'s note: PREP is an intensive seven-week program that helps students prepare for college.)

I entered St. Mary's in 2000 majoring in Political Science. I enjoyed how my class peers moved together as a group through the core curriculum of our major. We developed a close bond, helping and looking out for each other. At St. Mary's I learned how important a well-rounded and diverse education is. I joined Sigma Sigma Sigma sorority and Coro y Camera Santa Maria, the St. Mary's choirs. I enjoyed singing, but more than that, I enjoyed being a part of a group.

During my freshman year I saw first-hand the compassion and sincerity that the professors showed. My father was in his last semester at St. Mary's, and we took College Algebra together. Most would find it difficult to take a college class with a parent sitting next to them; however, I did not. Although my father struggled in the class, with my help at home and the help of our professor, he was successful. After seven years of working a full-time job, supporting a family, and going to



## My goal as a teacher is to show the same love, respect and honesty that I received from my professors at St. Mary's.

school full-time, my father graduated with his teaching certification in Music.

After earning my bachelor's degree in 2004, I taught music to elementary students for three years before deciding to go back to St. Mary's to get my master's in Public Administration. And although my graduate degree trained me for management positions in local governments, teaching had become my passion. It's my personal commitment to public service.

St. Mary's always felt like a family

who sincerely cared and made a difference in my life. I believe that I am called upon to influence others' lives the way mine has been.

To give my students that same kind of experience, that closeness and care from professors, I needed to make them aware of the well-rounded education they could receive right here in San Antonio at St. Mary's. I had them write letters to St. Mary's President Charles Cotrell and ask him any questions they had about the University. I was deeply moved, and my students were very excited, by

required to enter and be successful in college, and they look forward to participating in a college experience of their own.

St. Mary's made a major difference in my life—from being the daughter of a graduate of St. Mary's, attending PREP there, and deciding that there was no place to go but St. Mary's for my degrees. My professors at St. Mary's showed me how educators can and should care for the well-being and success of their students.

My goal as a teacher is to show the same love, respect and honesty that I



to me—you could walk anywhere on campus and people would smile and greet you as you passed. The professors knew you and cared about your success. It didn't matter if you were a young or older student like my father, the professors would listen to what you had to say and wanted to see you succeed. I had great professors

President Cotrell's offer to visit our class and to answer my students' questions about college in person!

Cotrell's visit made a lasting impression. My students now talk about going to college all the time, and they proudly wear their Rattler t-shirts every Wednesday. More importantly, they are more aware of the work

received from my professors at St. Mary's. Their support and guidance led me to become the professional I am today. By wanting success for my students—and sharing my experiences with them—I believe I can instill in them the desire and the knowledge that they, too, are capable of attaining a college education. ■

## A College-Going Culture

When the request came into the President's Office asking Cotrell to visit Larissa Luna's third grade class, he saw this as a perfect opportunity for him to put into practice the principles of the P-16 Council.

The goal of P-16 regional councils across the state is to foster college-going cultures in their local communities. 'P-16' describes an integrated system of education beginning in preschool (the 'P') through a four-year college degree ('grade 16'). The councils are made up of pre-school, elementary, middle and high school educators, administrators of higher education institutions and community business leaders. The regional councils are supported by the Texas Higher Education Coordinating Board.

As the Vice President of the P-16 Plus Council of Greater Bexar County, Cotrell and his colleagues work to create a more integrated education system that provides all students with smooth transitions from one level of learning to the next, ultimately producing a better-

prepared workforce that is equipped to make valuable contributions to the local economy.

As part of the P-16's multi-year plan to create a college-going culture, parents/families, teachers, counselors, principals and school superintendents must be 'champions.' As 'champions,' they must work as Larissa Luna has, to help students and their families realize that education after high school is doable and attainable; they must talk about trade schools, technical schools, four-year institutions and graduate schools. The foundation is laid in preschool and solidified in high school.

So what started as a class discussion about Luna's own college experiences grew into a school-wide college day recognized weekly, a kaleidoscope of college and university pennants in the school cafeteria, and hundreds of elementary school students excited about going to college—hence a college-going culture!

### Kids Say the Darndest Things

The third-graders' letters to the President were colorful, creative and especially humorous. Go to [www.stmarytx.edu/g&b/home](http://www.stmarytx.edu/g&b/home) to see their letters and questions about St. Mary's.



**My office is a place where I come if I need inspiration. I can always find something to keep me focused, as well as something that reminds me not to take myself too seriously. Everything I put up in my office is a reminder of what I'm doing and why I'm doing it.**

### 1. [Marathon Bibs]

I've run 8 1/2 marathons [one was a half marathon] since 1999. It's a midlife crisis thing.

### 2. [Framed Concert Tickets]

My first concert was the Eagles in 1975, maybe, at the El Paso County Coliseum. They don't make concert tickets like that anymore—now they're either online or weird receipts. I saw The B-52's at the old Armadillo World Headquarters in Austin. It was a wild concert towards the end of the punk genre when people were crazy about The B-52's.

### 3. [Framed John Lennon Imagine Photo]

John Lennon is an interesting character, and I've always been influenced by his music. This is a photo of John and the lyrics to "Imagine." He was always encouraging people to think outside of the box and do things a little differently. It gets me in trouble, too, though. It reminds me to ask questions and to question authority.

### 4. [Black and White Presa Print]

I like to support the local guys when I can. Cruz Ortiz is a kind of eclectic, bohemian local artist and filmmaker. His art includes a lot

of San Antonio things like HEB, Hemisfair Tower, botánicas and Southtown. It resonates with everything we think about in Latino culture. This print is one of his first pieces that I bought for \$20. Now his pieces sell for about \$4,000, and he's had shows everywhere from Artpace in San Antonio to the Louvre in Paris.

### 5. [Nef Garcia and Henry B. Gonzalez Poster]

This is an old-style campaign poster for Nef Garcia who was a professor of mine at St. Mary's back in the 1970s and 80s. It shows the lineage of the Democrats—Henry B. Gonzalez, FDR, John F. Kennedy and Lyndon B. Johnson—to show the idea that he's a strong candidate.

### 6. [Wall of Stickers]

I started collecting political stickers and buttons in the early 1980s, but they don't make them like they used to. Whenever I go to a flea market or a rally I try to get one. Some of them are just a statement—I'm a Batman fan so I have a Batman sticker, and another reflects some sentiments I have toward Newt Gingrich. My favorites are the Kennedy '80 and the No Grapes stickers.

I also have pictures with former Speaker of the House Carl Albert, the Prime Minister of Japan, and former state Sen. Frank L. Madla Jr. when I was a legislative assistant in the Texas Senate.



**Art Vega, Ph.D.**  
Public Administration Graduate Program Director  
Associate Professor of Political Science





### Surviving the Chopping Block

Alum Becomes Chef, Competes on Reality Cooking Show

#### Manuel Treviño (B.B.A. '96)

Manuel Treviño has been on the chopping block before. When he was a contestant on the fourth season of Bravo TV's "Top Chef," he and 15 other young chefs from around the world battled for the title of "Top Chef." Manuel didn't win the competition, but he's grateful for the opportunity.

"Top Chef was a terrific experience," he said. "It reminded me of why I got into this business in the first place – the passion and love that I have for food."

Treviño is now executive chef at Travertine in New York City, but he started at the bottom, helping his family out in the kitchen in his childhood home in Laredo. When he came to San Antonio to attend St. Mary's, he started working in professional kitchens.

"I always had a real passion for the kitchen and started cooking at an early

age," he said.

After St. Mary's Treviño attended the New England Culinary Institute in Vermont. Then in 1998, he moved to New York City, where his culinary career took off. At the famous Babbo in NYC, he had the opportunity to work with Mario Batali. "Mario is a great person to learn from in the kitchen," Treviño said. "He's a commanding presence and so full of knowledge. I know that my time spent cooking with him was invaluable for my career."

After some of his coworkers encouraged him to audition, Treviño landed a spot on "Top Chef." He was the fourth "cheftestant" asked to "pack your knives and go" during the fourth season, but fans of the show still remember him.

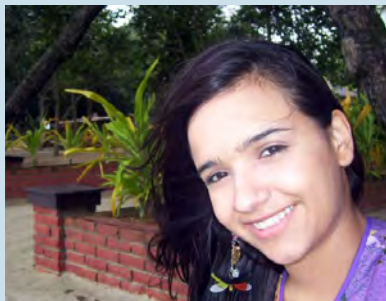
"When I get recognized, it's a very humbling experience, especially when I am approached by young cooks just getting started in the field," he said.

Even though his life took him on a different path, Treviño never regrets getting a degree in business at St. Mary's.

"My business degree has given me the tools to go beyond the line," he said. "It allows me to run a successful restaurant as a business as well as a successful kitchen."

Transitioning from a business path to a culinary career taught Treviño some lessons about the importance of keeping doors open. "Never discount any avenue. Network with everyone you possibly can. Always keep your eyes peeled for the next big opportunity."

—by Lauren Madrid,  
Communications Coordinator



## Talking Money in Malaysia

Senior Presents Paper  
at International Conference

### Sandra Montoya

When Sandra Montoya moved from Colombia to San Antonio four short years ago, she didn't speak English. But in December, she represented St. Mary's at an international academic conference in Malaysia, where she shared her research on the economic crisis. Though accustomed to global travel, Montoya was both nervous and excited before embarking on her journey.

"Malaysia was new to me and I was going by myself. I wasn't even sure if I was taking the right clothes," said the senior finance major who took intensive English courses at San Antonio College before transferring to St. Mary's.

"I chose St. Mary's because it's a great university with terrific alumni support, and also because of the great scholarship I received," she said.

The McNair Scholars Program helps undergraduate minority students like Montoya develop skills to prepare them for graduate and doctoral programs. Montoya was accepted into the program and began conducting the research that sent her across the Pacific Ocean.

Montoya's mentor, Mathew Joseph, Ph.D., the Emil C.E. Jurica Distinguished Professor of Marketing in the Bill

Greehey School of Business, encouraged her to apply to the Asian Academy of Management (AAM) International Conference. Departments around campus helped pay her airfare, and the AAM waived its registration fee.

The theme of the conference, "The Global Economic Meltdown: Managing Change for Sustainability," fit her major perfectly, and Montoya delved into the question, "How did the U.S. economy get to where it is today, and how did it affect the rest of world?"

"It was intense because of the expectations there were for a professional presentation," Montoya said. "English is my second language, so I had to get my writing checked regularly. It was a fascinating topic, and I was always on the computer researching and highlighting passages."

Montoya is still amazed that she was accepted alongside career researchers from prestigious organizations from around the world.

"Papers from last year's conference were all written by professors and people with Ph.D.s," she said.

A true businesswoman, Montoya seizes every opportunity, even if it means hard work. She's worked at Bank of America throughout school and is now applying to graduate school while trying her hand at running a business.

"I don't sleep much, but I feel like I'm doing something for myself," Montoya said. "My dream is to own my own business, something even bigger than what I'm working on now."

After returning from Malaysia, Montoya opened her own business – Sur Envios International Courier – specializing in secure shipments to Central and South America. The venture combines two things closest to her heart—her homeland and the excitement of entrepreneurship.

— by Valerie Sanchez, Senior English-  
Communication Arts major





2008 - 2009

**St. Mary's University  
Honor Roll of Donors**

1852

# Delivering on Our Promise

by Charles L. Cotrell, Ph.D.



Students choosing higher education arrive at their respective colleges and universities with certain expectations. Certainly, they expect to develop skills and knowledge that will allow them to follow their chosen career paths. After all, investing in a college education requires many sacrifices by students and their families. In addition, most college students expect that their experience will broaden their worldview. I believe our obligation to St. Mary's students is more significant. It is our duty to deliver on our promise to provide them with an excellent education in the Catholic and Marianist traditions.

When St. Mary's students graduate, our promise is they will possess the superior academic preparation necessary to affect positive advances in their professions and in their communities, and the desire to reach their full potential as human beings, with a sound moral foundation and a passion to improve the world for the common good. We deliver on our promise to students—and ultimately to you, our alumni and friends—by fulfilling our mission and the goals developed in our strategic plan, *Vision 2012*.

By **nurturing a vibrant Catholic and Marianist culture**, our students build their lives on a moral foundation that will serve them well throughout their professional and personal lives. Through opportunities that call them to give of themselves to a larger purpose, they internalize an

understanding of the cornerstones of Catholic social teaching and a passion for the Marianist tradition of service.

**Academic quality and innovation** propels universities to greatness and challenges both students and faculty to excel. St. Mary's students not only benefit from excellent teaching in the classroom, they learn from experiential opportunities on campus, in the community and abroad, all of which combine solid liberal arts and professional preparation.

Building partnerships that create learning, leadership and service opportunities for our students only happens when we **extend boundaries** beyond the comfort of our campus. Prospects abound for students to take their classroom “on the road.” Whether it is working with neighborhood revitalization, learning the intricacies of government at the State Capitol or helping to build water purification systems in Peru, students put into action their knowledge and compassion and positively influence the communities they serve.

To **assure viability** in the end so that every student has the chance to reach their full potential as human beings, we continue to do everything possible to keep a St. Mary's education accessible and affordable, while attracting the best-qualified students and teachers.

Most students today have never lived without the Internet, and in their worlds computers, PDAs, flat-screen

televisions and instant messaging are standard, so we consistently **enhance facilities and technology** to meet the needs and expectations of today's students and to improve their overall experience—both curricular and co-curricular.

To provide students the kind of environment in which they can fully realize their talents requires resources. I am deeply grateful to the thousands of you who make a financial commitment to St. Mary's, thus enabling us to carry out our mission and vision.

One group owed a special debt of gratitude is the Alumni Association. Last year the Association committed \$100,000 a year for four years to partner with the University to offer “Access St. Mary's,” a program developed in response to the realities of a struggling global economy. Access provided full tuition to high ability incoming freshmen who qualified academically and financially.

Last fall, we exceeded our projection for the program by enrolling nearly 55 percent of the Access-eligible freshmen who were accepted. These nearly 170 students—more than 30 percent of the 2009 freshman class—came with some of the highest quality indicators of any incoming class. In addition, their retention rate from the fall to this spring semester is more than 97 percent!

The economic climate continues to present considerable challenges. The



**When St. Mary's students graduate, our promise is they will possess the superior academic preparation necessary to affect positive advances in their professions and in their communities . . .**

success of Access St. Mary's demonstrated that we are fulfilling a need and committed to ensuring that a quality, liberal arts, Catholic education remains a viable option for students. Therefore, for the second year, St. Mary's and the Alumni Association have approved the financial four-year commitment to qualifying members of the fall 2010 incoming class. The second generation of this special program—Access 2010 at St. Mary's University—will benefit qualifying students in the newest class of freshmen at St. Mary's with full tuition.

At St. Mary's, we believe outcomes prove the cost of private education is a good investment. With programs in place that result in an 80 percent retention rate from freshman to sophomore year and a graduation rate of nearly 60 percent, St. Mary's stands tall among its peer institutions. In fact, St. Mary's recruitment and retention programs have been so hugely successful, they are being recognized on the national stage as models of innovation. This spring, Vice President for Enrollment Management Suzanne Petrusch and Assistant Vice President for Retention Rosalind Alderman, Ph.D., are invited to speak at the annual national meeting of the College Board about the overwhelming success of "Access St. Mary's" and our accomplishments in retaining and graduating students. Their presentation is also featured in the most recent issue of *The Hispanic Outlook in Higher Education* magazine.

Education is essential in today's global economy and marketplace. (Read about how one of our graduates is helping to create a college-going culture in San Antonio on page 14.) To keep St. Mary's accessible and affordable we must, first, continue to meet our

enrollment goals and, second, increase scholarship endowments to attract the best-qualified students and professors. Three years ago, we launched the \$23 million *Extending the Tradition of Excellence Campaign* for academic excellence and athletics. We have surpassed our \$10.5 million goal for academic excellence and remain diligent in our pursuit of student scholarship resources.

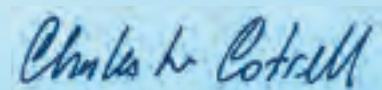
In addition, the campaign seeks to raise \$12.5 million for an outdoor sports complex to rival the Alumni Athletics & Convocation Center, St. Mary's unparalleled facility for indoor sports with its 3,800-seat Bill Greehey Arena. With five national titles in four sports—as well as a National Academic Championship last year in men's golf—winning at St. Mary's is a testament to the spirit of competition and the tenacity and talent of thousands of student-athletes. And while records show varsity competition began at St. Mary's in 1902 with baseball, over the years women's and men's teams in 12 sports at St. Mary's have won more than 100 conference championships and advanced to NAIA and NCAA Division II postseason play more than 50 times.

An outdoor sports complex will provide our outstanding student-athletes with fields and courts for baseball, softball, soccer and tennis that are reflective of their talents, while at the same time complementing St. Mary's efforts to revitalize the neighborhood and the Westside, as well as strengthen our partnership with the city to make San Antonio an NCAA destination for championship play. Of the \$12.5 million goal, a \$6 million grant will come from Bexar County, but only if St. Mary's raises an additional \$6.5 million. While 54

percent of our goal is in hand or pledged, we still have much work ahead of us before we break ground in June 2011. I urge you to join us in completing this important campaign for the benefit of our students, our neighborhood, and the City of San Antonio.

I'm pleased to report that other efforts to revitalize our part of the city, that began with the establishment of the St. Mary's Neighborhood Revitalization Task Force less than three years ago, are significant. The Task Force has taken a holistic approach that includes development of two pocket parks; application of stimulus funds; housing construction and rehabilitation; re-branding of the neighborhood area; infrastructure and quality of life improvements; and commercial revitalization. Because of our progress, the HUD Office of University Partnerships selected the St. Mary's Neighborhood Revitalization Project to be showcased at its "Communities and Universities: Making a Difference in Challenging Times" national conference to be held in San Antonio in April.

As alumni, friends and benefactors of St. Mary's, you have an expectation that your involvement in, and gifts to, the University will improve the quality of our students' educational experience; that your gifts of time and talent and capital are providing the resources that, with you as our partners, enable us to deliver on our promise. Thank you for joining us in this important endeavor. I am grateful for your continued support.



# St. Mary's University Honor Roll of Donors

Gifts Received June 1, 2008 – May 31, 2009

We sincerely appreciate the generosity of our donors. Every effort has been made to ensure the accuracy of our donor lists.  
Should you have any questions about your listing, please contact the Office of Advancement Services:  
telephone (210) 436-3088 or e-mail [rmcasha@stmarytx.edu](mailto:rmcasha@stmarytx.edu).

## The 1852 Society, established in 1993, recognizes those individuals who have made the University a beneficiary through a will, charitable trust, a gift annuity or a life insurance policy.

±Mary Dorothy Barr  
Nicholas Barrón  
J. Michael Belz  
John and Laura Jean Benbow  
Edward and Nelda Benninger  
Ernest and Betty Bodden  
Clifton and ±Rosalie Bolner  
Faye M. Bracey  
Patricia A. Britton  
±Ralph and Donna Bullock  
Homer H. Burkett  
Caroline A. Byrd  
Helen Costello  
John R. Courtney Sr.  
Robert C. Cowan Jr.  
Gregory and Patricia Crane  
Douglas and Nancy Cross  
±David and ±Mary Crowley  
Rose Marie Cutting  
John Michael and Margaret Daley  
Jacqueline O. Dansby  
±Laurence L. Daves  
±Mary E. Davis  
Robert G. Davis  
Rebeckah J. Day  
Eugene G. de Bullet Jr.  
Pamela S. DeRoche  
Harry L. Deathe  
Ruben and Veronica Escobedo  
Charles E. Franzke  
Cynthia E.J. Gdula  
Gertrude Geraghty  
Nicolas F. Gonzalez  
R. Bruce Gould and Sharry  
Crofford Gould  
Doug Hall  
±Zita Wist Hauswald  
Larry G. Hufford  
Thomas M. Hughes  
Elton M. Hyder III  
Constance J. Jones  
±Richard Klitch  
John S. Kusenberger  
David J. Kvapil  
Pat and ±Dorothy Legan  
William F. Lindley

A. David Mangelsdorff  
Ena and ±Max McClure  
Sean M. McIntyre  
Joe J. Medina  
Don and Betty Melaas  
Eugene A. Mendoza  
C. Gay Meyer  
August and Minnie Moore  
Frederic W. Morton Jr.  
±Pola Negri  
Raymond L. Pedrazine  
Richard S. Pressman  
John J. Range  
Atheilia M. Rechten  
±Everett A. Risz  
Ann Marie Robles  
±Charles Roedig  
±Floyd M. Roland  
±Robert and ±Freida Rosow  
Sheldon and Jean Rutman  
Robert E. Sefcik  
Robert E. Seng Jr.  
David C. Sharman  
±Leonard and ±Shirley Sterling  
Norman C. Thomas  
±Anton Toman  
Anne Winter Troupis  
Leslie and Helen Tschoepe  
Joseph C. Wailes  
Paul T. Wendland III

## Lifetime Donors – Through their committed giving history and annual gifts, lifetime donors impact St. Mary's strategic priorities and greatest needs.

## St. Mary's Benefactor Society \$1 million+

Alumni and friends of St. Mary's University, leaders in their professions and philanthropy, are committed to serving the community. St. Mary's benefactors perpetuate the University's promise of an educational venture shaped by faith, service and scholarship.

AT&T Foundation  
±Albert and ±Margaret Alkek

The Albert & Margaret Alkek Foundation  
George W. Brackenridge Foundation  
Estate of Alice S. Briggs  
Bill and Louree Greehey  
Houston Endowment Inc.  
The Howard Hughes Medical Institute  
The John G. and Marie Stella Kenedy Memorial Foundation Inc.  
The J.E. & L.E. Mabee Foundation  
Marianist Province of the United States  
Marianist Trust  
Dennis and Delmarene McCarthy  
St. Mary's University Alumni Association  
USAA Foundation  
Valero Energy Corp.  
The Lamar Bruni Vergara Trust  
±Pedro and ±Alicia Viyao  
±H.B. Zachry Sr.  
Zachry Construction Corp.

## Chaminade Society \$500,000-\$999,000 Blessed William Joseph Chaminade established more than 40 schools, each dedicated to the formation of the whole person in faith and community. Today, his vision continues to shape the educational experience of St. Mary's students.

Charles and Melissa Barrett  
Thomas M. Benson  
±Benjamin F. Biaggini  
±Burton E. Grossman G.  
Ewing Halsell Foundation  
The Harry and Deverra Lerman Educational Trust  
Scholarship Fund  
Mary Ellen O'Connor Trust  
Open Society Institute  
PG&E Gas Transmission Texas Corp.  
Richter's Bakeries  
The Estate of William Carl Schell  
St. Mary's University School of Law Foundation  
Zachry Foundation

## Bordeaux Society \$100,000-\$499,999

Marianist roots can be traced to the Bordeaux region of France where the Blessed William Joseph Chaminade, founder of the Society of Mary, and Sister Adèle de Batz de Tranquelléon, founder of the Daughters of Mary Immaculate, spent their early years building the religious communities.

AT&T  
Alliant Computer Systems Corp.  
Carlos and Maria Alvarez  
The M.D. Anderson Foundation  
ARAMARK Services  
Estate of Timothy O. Austin  
S.D. Bechtel Jr. Foundation  
Beirne Maynard & Parsons LLP  
J. Michael and Esther Belz  
David and Diane Biegler  
Jack E. Biegler  
Estate of Ruth W. Blume  
The Boler Co.  
Burlington Northern Santa Fe Foundation  
J.A. Canales  
Capitol Aggregates Ltd.  
±Paul E. Casseb Sr.  
Catholic Life Insurance  
Chevron Corp.  
The Louise C. Clemens Trust  
Elizabeth Huth Coates Charitable Foundation of 1992  
Coca-Cola Enterprises  
William and Vicki Combs  
The Bill G. Crane Trust  
The David M. & Mary C. Crowley Charitable Lead Trust  
Cullen Trust for Higher Education  
Cy Pres Award 2009  
±Stephen Paul Daily  
Davidson Family Charitable Foundation  
John and Morella Dewey  
David C. Dickson  
David C. Dickson Charitable Fund of the San Antonio Area Foundation  
David C. Dickson Fund of the South Texas Community Foundation  
James R. Dougherty Foundation  
Charles and Betty Ebram



Robert and Anna Elizondo  
 Ruben and Veronica Escobedo  
 Ruben and Veronica Escobedo  
 Charitable Fund of the South  
 Texas Community Foundation  
 ExxonMobil Foundation  
 Estate of John Frederic  
 Frost National Bank  
 ±Brother Paul C. Goelz, S.M.  
 H-E-B Grocery Co.  
 D.D. Hachar Charitable  
 Trust Fund  
 Bill Hauser Charitable Remainder  
 Annuity Trust  
 William Randolph Hearst  
 Foundation  
 Ronald and Karen Herrmann  
 The Herrmann Family  
 Charitable Foundation  
 Hillcrest Foundation  
 Norma Fink Huffaker Charitable  
 Remainder Unitrust  
 Marjorie A. Jordan  
 Emil C.E. Jurica Endowment Trust  
 KPMG Foundation  
 Koehler Foundation  
 Robert D. Krebs  
 John S. Kusenberger  
 Estate of Mary P. Lagleder  
 Estate of J.W. Langlinais Sr.  
 Lawyer's Committee for Civil  
 Rights Under Law of Texas  
 Lehman Brothers Inc.  
 Jack Paul Leon  
 Harvey R. Levine  
 Le Chiao Lin  
 Vincent L.Y. Lin  
 Estate of Joe Lucchese  
 ±Pat Maloney Sr.  
 A. David Mangelsdorff  
 Marianist Residence  
 Marine Insurance Seminars Inc.  
 Amy Shelton McNutt Trust  
 The Meadows Foundation Inc.  
 ±Vaughan B. Meyer  
 Sister Mary K. Milne, O.S.U.  
 Estate of Winston R. Norris  
 Thomas M. O'Connor  
 Pepsi Bottling Group Inc.  
 Minnie Stevens Piper Foundation  
 Myra Stafford Pryor Trust  
 RadioShack Corp.  
 Estate of Caroline L. Reynolds  
 Ann M. Robles  
 Floyd M. Roland Charitable Trust  
 Joseph U. Rowley Trust  
 Sage Foundation  
 San Antonio Area Foundation  
 San Antonio Bar Association  
 San Antonio Education  
 Partnership  
 San Antonio Livestock  
 Exposition Inc.  
 Frank J. Scanio Jr.  
 Scanlan Foundation  
 Schering-Plough Foundation Inc.  
 Sembradores of San Antonio  
 Educational Foundation

Shell Oil Company Foundation  
 Tony I. Soo  
 The Marguerite Sours Foundation  
 St. Mary's University Alumni  
 Association-Athletics  
 Booster Club  
 Alfred J. Stein Jr.  
 Tate Inc.  
 Texas Equal Access to Justice  
 Foundation  
 Texas Independent College Fund  
 Texas Resources for Iraq-  
 Afghanistan Deployment  
 (TRIAD) Fund of the  
 San Antonio Area Foundation  
 Tom & Mary Turner  
 Philanthropic Trust  
 ±Tom E. Turner Sr.  
 The UPS Foundation Inc.  
 USAA Federal Savings Bank  
 VLSI Technology Inc.  
 Vinson & Elkins LLP  
 Western Properties (Texas) Ltd.  
 The James A. Young  
 Revocable Trust  
 Roger L. & Laura D. Zeller  
 Charitable Foundation

#### **Marianist Legacy Society**

**\$25,000-\$99,999**

*Carrying on the Marianist  
 commitment to education and  
 service, members of this society  
 typically have made gifts in the  
 form of endowed scholarships.*

Abell-Hanger Foundation Inc.  
 Aetna Foundation Inc.  
 Air Force Aid Society  
 Education Grant  
 Akin Gump Strauss Hauer  
 & Feld LLP  
 Alamo Area Council of  
 Governments  
 Barbara Bader Aldave  
 Aldo and Betty Alegria  
 Arthur Andersen LLP  
 Arthur Andersen LLP Foundation  
 Ashland Oil Foundation Inc.  
 Bank of America  
 Bank One Texas NA  
 Estate of M. Dorothy Barr  
 Roy R. Barrera Sr.  
 Barshop & Oles Co.  
 Diann M. Bartek  
 Peter G. Beemsterboer  
 Martin D. Beirne  
 Edward and Nelda Benninger  
 John and Bonita Benschoter  
 Celia Berwin Memorial  
 Foundation  
 The Jack and Susan Biegler  
 Fund of the San Antonio  
 Area Foundation  
 The Lynde & Harry Bradley  
 Foundation Inc.  
 The C.B. and Anita Branch Trust  
 Donald and Carla Brennan

Broadway National Bank  
 Bruni Family Charitable Trust  
 Rodolfo C. Bryce  
 The Ralph H. Busch Trust  
 Canales & Simonson PC  
 Ruben A. Candia  
 Raymond R. Carvajal  
 Ricardo G. Cedillo  
 Chaminade Marianist  
 Community House  
 Charles E. Cheever  
 G.H. and E.H. Coates Foundation  
 The Coleman Foundation  
 Community Foundation of the  
 Ozarks Springfield Trust Co.  
 Foundation  
 Compass Bank  
 Continental I Trust  
 Thomas and Leticia Contreras  
 Robert and Rozana Corbo  
 Corbo Electric Co. Inc.  
 Floyd E. Cotham  
 John R. Courtney Sr.  
 Robert C. Cowan Jr.  
 Cox Smith Matthews Inc.  
 F. William Crandall  
 Gregory and Patsy Crane  
 Theodore and Clair Craver  
 Anthony and Mary Anne Crosby  
 ±Kenneth L. Crowell  
 ±David M. Crowley Jr.  
 The David M. Crowley Foundation  
 Joe G. Cumpian  
 Beatrice T. Dante  
 Datapoint Corp.  
 Donald W. Daut  
 Estate of Mary E. Davis  
 Rebeckah J. Day  
 John and Jeune Dieterle  
 Sue Doty  
 Douglass Foundation  
 Stephen and Adele Dufilho  
 ±Roberta R. Durham  
 Rex L. Easley Jr.  
 Henry G. Ellert  
 The Ray Ellison Charitable Fund  
 Jeffrey and Renna Embry  
 Robert and Jeanine Engberg  
 Enserch Corp.  
 Ernst & Young Foundation  
 Farmers Insurance Group  
 Kittie Nelson Ferguson  
 Foundation  
 Estate of Evelyn C. Fickessen  
 Fidelity Charitable Gift Fund  
 The Ford Foundation  
 Fulbright & Jaworski, LLP  
 GE Foundation  
 Abel and Mary Garcia  
 James and Tena Gorman  
 The Gorman Foundation  
 Albert T. Gros  
 Halo Distributing Co.  
 G.P. Hardy  
 ±Hank B. Harkins Jr.  
 James S. Harrington  
 Harold J. Haynes  
 Rupert A. Hays

±Robert Hobbs  
 Hoblitzelle Foundation  
 Larry G. Hufford  
 Joseph G. Hutter  
 Estate of Janice A. Hutzler  
 IBM Corp.  
 International Bank of Commerce  
 J.C. Penney Inc.  
 James E. Jenney Trust  
 ±Belton K. Johnson  
 Constance J. Jones  
 James K. Jones Jr.  
 Robert W. Jorrie  
 JPMorgan Chase & Co. NA  
 Anthony Kaufmann  
 Joan & Herb Kelleher Charitable  
 Foundation  
 Edward and Nancy Kelley  
 Nancy and Ed Kelley Charitable  
 Foundation of the Ayco  
 Charitable Foundation  
 John C. Kennedy Jr.  
 Patrick J. Kennedy Sr.  
 KPMG LLP  
 Donald A. Knowlan  
 James M. Koett  
 ±John F. Kramer  
 William and Joan Kuebker  
 David J. Kvapil  
 La Prensa Foundation Inc.  
 La Quinta Inns Inc.  
 Lakeside Foundation  
 Lancer Corp.  
 Legal Services Corp.  
 Pat and ±Dorothy Legan  
 Aloysius A. Leopold  
 Levi Strauss Foundation  
 ±Alex T. Licata  
 Nancy B. Loeffler  
 Luby's Inc.  
 Margaret M. Maisel  
 Marianists of Ohio Inc. - S.A.  
 Matthews & Branscomb PC  
 Mattie-Jennie Fund Trust  
 B.J. "Red" McCombs  
 McCombs Foundation  
 MEGA Life and Health Insurance  
 Jim Merritt  
 Joseph F. Mifsud  
 Rev. Charles H. Miller, S.M.  
 ±Florence L. Miller  
 Gerald M. Miller  
 Michael M. Mitchell  
 Will A. Morriss  
 Evelyn Marlow Mortola  
 Bob Mullen  
 NationsBank  
 Estate of Pola Negri  
 Aloys J. Notzon  
 Obriotti Estate  
 Roderick V. O'Connor  
 Joseph M. Ojile  
 Operational Technologies Corp.  
 I.A. O'Shaughnessy Foundation  
 ±Leroy J. Pahmiyer  
 Panhandle Producing Co.  
 Jack S. Parker  
 Estate of Dorothy May Peshorn

Estate of Mary Placette  
 George E. Pletcher  
 Richard S. Pressman  
 J.R. Rainey Jr.  
 Rayco Inc.  
 ±Rev. John Rechten, S.M.  
 Matthew C. Reedy  
 Frank K. Ribelin  
 ±Rudolph W. Richter  
 ±Sam J. Riklin  
 ±Albert M. Rogers  
 Rose-Walker LLP  
 Semp Russ Foundation of the  
 San Antonio Area Foundation  
 San Antonio Bar Auxiliary  
 Foundation  
 San Antonio Express-News  
 San Antonio Spurs  
 Estate of Gracia Sanchez  
 Charlotte J. Sauget  
 ±William C. Schell  
 L. Charles Scholz  
 Alfred A. Schroeder  
 George F. Schroeder  
 J. Robert Scott  
 Daniel K. Seale  
 Selrico International Inc.  
 Joseph S. Sexton  
 Philip J. Sheridan  
 Sony USA Foundation Inc.  
 South Texas Chapter Risk  
 Insurance Management  
 Society Inc.  
 Frank R. Southers  
 Southwest Research Institute  
 St. Mary's University Alumni  
 Association-St. Louis Chapter  
 St. Mary's University Law  
 Alumni Association  
 St. Mary's University  
 Women's Law Association  
 James A. St. Ville  
 Felix L. and Jo Stehling Foundation  
 Estate of Leon F. Steinle  
 ±Shirley Sterling  
 Louis H. Stumberg  
 John T. Stupka  
 Tesoro Corp.  
 Texas Bar Foundation  
 Texas Security General Insurance  
 Agency Inc.  
 Lillie M. Tijerina  
 ±Charles A. Toudouze Sr.  
 Jack S. Tsao  
 Ultramar Diamond  
 Shamrock Corp.  
 United Television  
 Luis R. Vera Jr.  
 Joseph C. Wailes  
 Wells Fargo Foundation  
 Daniel J. White  
 ±John Noble White  
 ±Evie J. Wilson  
 Watson W. Wise Foundation  
 John H. Wood Jr. Memorial Trust

**Annual Giving Clubs –  
 Members of giving clubs  
 support St. Mary's  
 operational activities,  
 programs and projects.**

**St. Louis Guild  
 \$10,000-\$24,999 Annually**  
 St. Louis College – the  
 “Woodlawn campus” – opened  
 for boarding students in 1894. The  
 first building on campus, St. Louis  
 Hall, stands today as a proud  
 symbol of St. Mary's rich history.

J. Rick Aleman  
 Baptist Health Foundation  
 of San Antonio  
 Martin D. Beirne  
 Beirne Maynard & Parsons LLP  
 David W. Biegler  
 Homer H. Burkett  
 Citi Foundation  
 Compass Bank  
 Cox Smith Matthews Inc.  
 Friends of Hal Walker  
 Hero Assemblers LP  
 Hero Logistics LP  
 Nancy and Ed Kelley Charitable  
 Foundation Fund of the San  
 Antonio Area Foundation  
 La Prensa Foundation Inc.  
 Jack Paul Leon  
 Vincent L. and Cherry Lin  
 Klaus L. Mai  
 A.D. Mangelsdorff  
 Sandee Bryan Marion  
 Joseph F. Mifsud  
 Thomas M. O'Connor  
 South Texas Chapter Risk  
 Insurance Management  
 Society Inc.  
 Edward and Linda Speed  
 The Marguerite Sours Foundation  
 Texas Security General Insurance  
 Agency Inc.  
 Union Pacific Railroad  
 Graham Weston Gift Fund–A  
 Donor Advised Fund  
 XIT Networks LLC  
 Roger L. & Laura D. Zeller  
 Charitable Foundation

**University Guild  
 \$5,000-\$9,999 Annually**  
 After several name changes,  
 including St. Mary's Institute,  
 St. Louis College and St. Mary's  
 College, St. Mary's University was  
 chartered with the State of Texas  
 in 1927.

John and Bonita Benschoter  
 Patrick J. Boone  
 Theodore F. Craver  
 Rebeckah J. Day  
 Ruben and Veronica Escobedo  
 Matthew and Kerry Faudree

Frost National Bank Charitable  
 Foundation  
 Fulbright & Jaworski LLP  
 Gilbert J. Garcia  
 Bill and Louree Greehey  
 Michael and Flora Hernandez  
 Jackson Lewis LLP  
 James K. Jones  
 John S. Kusenberger  
 Marine Insurance Seminars Inc.  
 Samuel C. Maverick  
 Eileen Cooke Mueller  
 Progress Foundation  
 The Riklin Charitable Trust  
 Rose-Walker LLP  
 Sembradores of San Antonio  
 Educational Foundation  
 Sico White Hoelscher &  
 Braugh LLP  
 Rose Spector  
 St. Mary's University Alumni  
 Association-Great Lakes Chapter  
 St. Mary's University Alumni  
 Association-St. Louis Chapter  
 St. Mary's University Women's  
 Law Association  
 Leonard and Shirley Sterling  
 Charitable Foundation  
 Paul Vahldiek  
 Valero Energy Corp.  
 Villafranca & Villafranca PC  
 Wells Fargo NA  
 Watson W. Wise Foundation

**Founder's Guild  
 \$1,852-\$4,999 Annually**  
 In 1852, four Marianist brothers  
 arrived in San Antonio and opened  
 the forerunner to St. Mary's  
 University, the oldest Catholic  
 university in Texas and the  
 Southwest. From its beginnings,  
 St. Mary's founders instilled the  
 Marianist ideals of academic  
 excellence, ethical commitment  
 and service to community. These  
 values remain the cornerstones of  
 a St. Mary's education.

Accretive Solutions  
 Anheuser-Busch Cos. Inc.  
 Association of Old Crows  
 Educational Foundation  
 Arnold & Porter LLP  
 BKD LLP  
 J. Michael Belz  
 Edward and Nelda Benninger  
 Helen M. Berridge  
 Eugenia and Lawrence Bertetti  
 Foundation  
 Edward and Christine Boyle  
 Bracewell & Giuliani LLP  
 Broadway National Bank  
 Jim Brzezinski  
 Burlington Northern Santa Fe  
 Foundation  
 James W. Callaway  
 Capital One  
 David and Norma Cardenas  
 Laveta A. Casdorff  
 Catholic Life Insurance  
 Rebecca Quintanilla Cedillo  
 Chrichalyn Inc.  
 Corbo Electric Co. Inc.  
 John R. Courtney Sr.  
 Anthony and Mary Anne Crosby  
 Douglas and Nancy Cross  
 J.M. Daley  
 Helen M. Davis  
 Lester L. Davis  
 Stephen and Adele Dufilho  
 Charles and Betty Ebrom  
 El Paso Corporate Foundation  
 Jeffrey T. Embry  
 Emerson Electric Co.  
 Ernst & Young LLP  
 First National Bank  
 Gerardo B. Flores  
 Former Agents of the FBI  
 Foundation  
 William E. Gellhausen III  
 Albert T. Gros  
 William Guardia  
 Guerra & Moore Ltd. LLP  
 Michael Hartmann  
 David T. Hedrick  
 Frank Herrera  
 Ronald and Karen Herrmann  
 Barbara P. Hervey  
 Hispano USA LLC  
 IBM Corp.  
 Institute of Electrical and  
 Electronics Engineers  
 Jackson Walker LLP  
 Michael and Tricia Jansen  
 KPMG Foundation  
 Mary F. Kalinec  
 Anthony Kaufmann  
 Thomas Kayser  
 Patrick J. Kennedy Sr.  
 Robert L. Kestl  
 Kittleman Thomas & Gonzales LLP  
 J. Philip Knight-Sheen  
 Mary F. Kramer  
 Daniel Kustoff  
 Leon Investment Management  
 Nancy B. Loeffler  
 Alma L. Lopez and Emilio Cavazos  
 Margaret M. Maisel  
 Mattie-Jennie Fund Trust  
 Robert M. McAdams  
 Gerald & Carole Miller Family  
 Foundation  
 Rebecca Porter Millikin  
 Michael and Judy Molloy  
 Sandra E. Nannini  
 NuStar Energy LP  
 Ron and Lina Orr Fund of the  
 Fidelity Charitable Gift Fund  
 P&G Fund Matching Gifts Program  
 Padgett Stratemann & Co. LLP  
 Karen Ellert Peña and  
 Richard Peña  
 Mary Ann Blume Penzel  
 George G. Persyn  
 Paul S. Petkoff



Minnie Stevens Piper Foundation  
 Plunkett & Gibson Inc.  
 Michael and Donald Pohl  
 ±Frederick J. Quarles  
 Stephen and Phoebe Radacinski  
 Atheilia M. Rechten  
 Matthew C. Reedy Charitable  
 Fund of the San Antonio  
 Area Foundation  
 Fernando C. Reyes  
 Rudy Reyes  
 The Rhodes Law Firm  
 Willy E. Rice  
 Susan Romo  
 Ruben Escobedo & Co.  
 Lawrence J. Ruzicka  
 San Antonio Bar Foundation  
 Sanchez Law Firm  
 Mary P. Schroeder  
 J.R. Scott  
 Patrick K. Sheehan  
 John J. Sieffert Jr.  
 Thomas and Guyla Sineni  
 Doris A. Slay-Barber and  
 Gene Barber  
 Steven J. Solcher  
 South Texas Money  
 Management Ltd.  
 Southwest Research Institute  
 Community Foundation of the  
 Ozarks Springfield Trust Co.  
 Foundation  
 St. Mary's University Law Alumni  
 Association  
 Carol P. Thompson  
 Tsakopoulos Brown Schott  
 & Anchors PC  
 Neftali Villafranca  
 Wachovia Corp.  
 Wachovia Foundation Matching  
 Gifts Program  
 Wells Fargo Matching Foundation  
 Educational Gift Program  
 Yzaguirre & Chapa Attorneys  
 at Law  
 Albert and Suzanne V. Zug

### President's Guild

**\$1,000-\$1,851 Annually**

Twelve presidents have led  
 St. Mary's University, perpetuating  
 the spiritual and educational  
 vision established by the  
 Marianists in 1852.

ATKG LLP  
 Richard R. Aboia  
 Accenture Foundation Inc.  
 Moses V. Aguilar  
 Alamo Chapter CPCU  
 Alamo Environmental Inc.  
 Alamo Title Co.  
 Felix D. Almaraz  
 Jon C. Amberson  
 Larry J. Arnie  
 Ball & Weed PC  
 Lynn D. Barnett  
 John Battles

Ray E. Berend  
 Bexar County Women's Bar  
 Foundation  
 George A. Blakey Jr.  
 Ernest L. Bodden Jr.  
 Robert J. Boerner  
 Michael J. Brady  
 Caroline A. Byrd  
 Esther Cabrera  
 Alonzo Cantu  
 Charles E. Cantú  
 R. Michael Casseb  
 Solomon Casseb  
 Joseph B. Castellano  
 Richard A. Castro  
 Castro Enterprises Inc.  
 Central Builders LTD.  
 Charles E. Cheever  
 William H. Combs  
 Charles and Abbie Cotrell  
 Covington & Burling LLP  
 CPCU Harry J. Loman Foundation  
 Gregory and Patricia Crane  
 Rose Marie Cutting  
 Donald W. Daut  
 Davidson & Troilo PC  
 Davis Cedillo & Mendoza Inc.  
 Davis Law Firm  
 Philip S. Day  
 Lawrence J. Del Papa  
 Pamela S. DeRoche  
 Douglas E. Dilley  
 Elizabeth J. Dixon  
 Walter and Ann Duvall  
 Bjorn Dybdahl  
 Sara E. Dysart  
 E. Cross & Co. Ltd.  
 Ellison Management LLC  
 Robert and Jeannine Engberg  
 Fannie Mae Foundation  
 Homer D. Fetzer  
 William E. Foale  
 Charles S. Frigerio  
 Thomas and Sarah Galvin  
 Paul D. Garcia  
 Ramon Garcia  
 Law Offices of Garcia Quintanilla  
 & Palacios  
 Gardner Law Firm PC  
 Johnny F. Gavlick  
 Genesis Networks Inc.  
 Rinaldo J. Gonzalez Sr.  
 Gonzalez Palacios LLP  
 Goode Casseb Jones Riklin  
 Choate & Watson PC  
 Jim D. Goudge  
 Kathleen M. Gray  
 David and Patsy Grice  
 Thomas and Yvonne Grothues  
 Guadalupe Lumber and Supply  
 Co. Inc.  
 Arturo E. Guerra Jr.  
 Halo Distributing Co.  
 Victor J. Harris  
 Hartline Dacus Barger Dreyer  
 & Kern LLP  
 Albert W. Hartman III

Hayden & Cunningham PLLC  
 Richard E. Haynes  
 Haynes & Boone LLP  
 Joseph P. Hebert  
 A.L. Hernden  
 Holt Co. of Texas  
 Charles M. Hornberger  
 Hornberger Sheehan Fuller  
 & Beiter Inc.  
 D. Michael Hunter  
 The Elton and Christine  
 Hyder Foundation  
 Caroline W. Jackson and  
 George H. Spencer Jr.  
 E.P. Jackson  
 Vincent R. Johnson  
 Constance J. Jones  
 Jordan Hyden Womble  
 Culbreth & Holzer PC  
 Ernest and Virginia Kerr  
 Donald A. Knowlan  
 James M. Koett  
 William and Joan Kuebker  
 Margaret R. Langford  
 Langley & Banack Inc.-  
 Carrizo Springs  
 Pat A. Legan  
 Aloysius A. Leopold  
 Liberto Management Co. Inc.  
 Linebarger Goggan Blair  
 & Sampson LLP  
 Lauro Lopez Jr.  
 Chris Maguire  
 Law Offices of Pat Maloney PC  
 Antonio Martinez  
 Robert L. Mason  
 Edith S. McAllister  
 Archibald C. McColl  
 Kathleen A. McCullough  
 Joe Mendiola  
 Herman and Anna Meyer  
 Alex M. Miller  
 Rev. Charles H. Miller, S.M.  
 Christine M. Miller  
 James A. Miller  
 Frederic W. Morton  
 Lawrence E. Noll  
 George Nuñez  
 Charlene O'Connell  
 Joseph M. Ojile  
 Mary L. Okruhlik  
 David and Susan Oliveira  
 Robert R. Ottis  
 Doris M. Paar  
 Thomas and Cecilia Pajda  
 Juan and Diamantina Peña  
 Debra R. Penshorn  
 The Pepsi Bottling Group Inc.  
 Suzanne M. Petrusch  
 Jean Migliorino Piccione Gift Fund  
 of the Fidelity Charitable  
 Gift Fund  
 Dianne L. Pipes  
 Anthony E. Pletcher  
 Allan B. Polunsky  
 Carol S. Pratho  
 Providus Houston LTD  
 Crispin Quintanilla

Israel and Rosemary Ramon  
 Donato D. Ramos  
 Kay L. and Gerald S. Reamey  
 Red Tape II  
 David R. Reiner  
 Mary Nell Richter  
 RiverStone Resources LLC  
 Jeffrey A. Rogers  
 David P. Ronzani  
 Frank Z. Ruttenberg  
 Luis J. Saenz  
 San Antonio Bar Association  
 San Antonio CPA Continuing  
 Education Foundation  
 San Antonio Young Lawyers  
 Association  
 John L. Santikos  
 Michael and Janice Schott  
 Paul Seals  
 Robert E. Seng Jr.  
 David C. Sharman  
 Shell Oil Co. Foundation  
 Matching Gifts  
 Shivers and Shivers  
 Silver Eagle Distributors LP  
 Alan Simon Donor-Advised Fund  
 of the Jewish Federation of  
 Omaha Foundation  
 Katherine M. Sisoian  
 Charles L. Smith  
 James M. Smith  
 SMK Capital Investment Co.  
 David W. Sommer  
 Frank R. Southers  
 Southwest Gem & Mineral  
 Society Inc.  
 St. Mary's University Alumni  
 Association Young Alumni  
 Chapter of San Antonio  
 Star Shuttle & Charter Inc.  
 Alfred J. Stein Jr.  
 Darrell G. Stewart  
 Strasburger & Price LLP  
 Malcolm E. Stratemann  
 Sysco Food Services of  
 San Antonio  
 William M. Tam  
 TETCO Stores LP  
 Norman C. Thomas  
 ±Charles A. Toudouze  
 Susan and Buddy Treviño  
 Arthur C. Troilo  
 Oran J. Tsakopoulos  
 Mr. and Mrs. Tom E. Turner Jr.  
 Andrew G. Ugarte  
 Enzo A. Uliana  
 USAA Matching Gift Fund  
 Juan M. Valadez  
 Alfred A. Valenzuela  
 Alfred Q. Valenzuela  
 J. Randy Vogel  
 Peter S. Vogel  
 Joseph C. Wailes  
 Douglas J. Wealthy  
 Rawley L. Weber  
 Andrew R. Wheeler  
 Daniel J. White  
 Ronald L. Wilburn

Bruce P. Wilson  
Robert J. Wilson  
Benjamin and Sandra Wilt  
Wortham Insurance & Risk  
Management  
Karen L. Zachry  
Zachry Group Inc.

**Gold and Blue Club**  
**\$500-\$999 Annually**

Our alma mater, "The Bells of St. Mary's," calls all alumni to sing praises for the glory of the "gold and blue," St. Mary's school colors.

3M General Offices  
AT&T Inc.-San Antonio  
AT&T Matching Gifts Program  
Allstate Foundation  
Amegy Bank of Texas  
Anheuser-Busch  
ARAMARK  
Theodore V. Arevalo  
Michael S. Ariens  
Atmos Energy Holdings Inc.  
Austin Calvert & Flavin Inc.  
Louis R. Baeten  
Donna J. Baggerly  
Ballenger Construction Co.  
Bank of America  
David A. Barkley  
Barrett Holdings Inc.  
J.C. Barton  
Beldon Roofing Co.  
Michael A. Benavides  
Robert R. Bezdek  
James T. Blaise  
Vincent A. Boyle  
Patricia F. Braddock  
Herbert A. Briesacher  
Thomas J. Brieske  
John W. Bull  
Kathleen M. Burch  
Sharon E. Callaway  
Ruben A. Candia  
Leopoldo E. Castillo  
Caterpillar Foundation  
Elmo M. Cavin  
David E. Chamberlain  
Steve A. Chiscano  
Chai Y. Choo  
Henry W. Christopher  
Mark W. Cochran  
Kevin G. Connelly  
Eva H. Cox  
Donald M. Coy  
Cuadrilla Distributing Inc.  
Peggy J. Curet  
Charles A. Davidson  
Charles A. Deacon  
Deloitte & Touche LLP  
Michael Denuccio  
J.J. Diaz  
Joseph D. Diaz  
Janet B. Dizinno  
Thomas D. Doerr  
Claude E. Ducloux

David J. Dybell  
Thomas H. Egolf  
Stephanie and John Elliott  
Donna L. Fields  
John F. Finerghy  
Michael J. Finger  
First Capital Group  
Management Co.  
Carol P. Fleming  
Patrick J. Fleming  
Henry Flores  
Juan A. Flores  
Lawrence J. Flume  
Friends of For Paws  
Friends of Jessica Garcia  
Curtis L. Frisbie  
Gabriel's Wine & Spirits  
Cynthia E.J. Gdula  
Clarence A. Gerfers  
GLI Distributing  
Paul F. Glowacki  
Stephen L. Golden  
Mirella Gonzales  
Jose G. Gonzalez Jr.  
Julio Gonzalez  
Daniel J. Grahmann  
Mark S. Grothues  
Ramon A. Guerra  
William T. Haley  
Peter A. Hansen  
Jonathan L. Hardt  
Julie T. Hatfield  
Conrad M. Hein  
Heineken USA  
Hill Country Estate  
Planning Council  
Amador P. Hinojosa  
Stephen J. Hitzfelder  
Peter Hoffmann-Pinther  
Gabriel W.K. Hui  
Joseph G. Hutter  
Richard C. Jaworski  
Bryan W. Jones  
Kevin L. Kelley  
Jeffrey M. Kempf  
Nancy N. Kerr  
David R. Krause  
Anthony J. Kujawa  
Michael T. LaHood  
Nicolas A. LaHood  
Langley & Banack Inc.-San Antonio  
Richard E. Langlois  
Las Palapas Bandera LTD  
LDN Soccer  
Terry N. Liddell  
Connie C. Lock  
Perren A. Lyon III  
Thomas F. Madison  
Robert L. Magee Inc.  
William P. Maines  
Darlene D. Makulski  
James A. Manning  
John and Clare Marino  
William D. Marks  
Stacey A. Martinez  
Zaida L. Martinez  
Victoria M. Mather  
David S. McBurnett

Merritt Hawkins & Associates Inc.  
Conrad U. Miller  
Joseph E. Miller  
Lou E. Montgomery  
James W. Moore  
William D. Moore  
MTL Insurance Co.  
James E. Mulligan  
NWA Limited Partnership  
Barbara H. Nellerhoe  
Robert G. Newman  
Nueces Marketing Partners Ltd.  
Richard D. O'Neil  
Oppenheimer Blend Harrison  
Tate Inc.  
Richard C. Ott  
Mark J. Pawzun  
Rosemary O. Perez  
Joseph R. Poche  
Principal Combined Fund  
Organization  
Professional Performance  
Development Group Inc.  
Randy and Phyllis Proske  
Rackspace Managed Hosting  
Raw Ventures LLC  
Bahman Rezaie  
James A. Richardson  
Right Images Inc.  
Richard M. Roberson  
David O. Rogers Jr.  
William C. Rogers  
Martin and Joan Rose  
Stephen L. Rottjakob  
Robert P. Roy  
Jesse Ruiz  
Sharon A. Sartori  
Eugene Scassa  
Schering-Plough Foundation Inc.  
Matching Gifts Program  
Sea Island  
Robert E. Sefcik  
Selrico International Inc.  
Wilton Shaw Jr.  
Daniel S. Sitterle  
Katherine Sosa  
Beth W. Squires  
Sunshine Ventures Inc.  
Willis N. Terry  
Tesoro Corp.  
Texas Capital Bank  
Albert A. Trotta  
Leslie W. Tschoepe  
Fernando Valdes  
Leopoldo R. Vasquez  
Steve Wilkinson  
Wilson & Pennypacker LLP  
Wittigs Office Interiors  
Marie M. Wyman  
Lisa V. Yeh

**Pecan Grove Club**  
**\$250-\$499 Annually**

The Pecan Grove at the heart of campus is the gathering place for the St. Mary's community. Alumni and friends can be found under the shady pecan trees throughout the year at various special events.

Harlan J. Adamcik  
Nick S. Aguilar  
Rosalind V. Alderman  
Karen A. Angelini  
Robert H. Austin  
Benjamin Avalos  
Rene J. Baeten  
Bank of America Matching Gifts  
Nicholas Barron  
David A. Bartelli  
Thomas R. Basinski  
David A. Berchelmann  
Robert E. Bingham  
Catherine M. Blashack  
Boeing Matching Gift Program  
Bohanan's LTD  
Franklin L. Bohl  
Juan A. Bonilla  
Sheila M. Bonilla-Tandoc  
Donnie M. Britt  
Lewis W. Britton  
Samuel J. Buchanan  
David W. Burke  
Joan A. Carabin  
Daniel E. Cardenas  
Johnny C. Cavazos  
Jennifer L. Chadwell  
David D. Christian  
David G. Colby  
Gregory W. Crane Jr.  
Thomas D. Cribbin  
Curl & Stahl  
Jacqueline O. Dansby  
Lisa A. Davis  
Joseph A. De Gasperi  
Michael D. DeNuccio  
Daniel F. Derrick  
Ernest M. DeWinne Jr.  
Jane K. Dingivan  
Frank W. Doerfler Sr.  
Maribeth Durst  
Douglas B. Endsley  
Manuel Esparza III  
Bill and Renee Farrell  
Melba D. Fisher  
Richard E. Flint  
William H. Forney Jr.  
Mark and Nona Fox  
William R. Furgeson Jr.  
Michael G. Gaffney  
Rafael Garcia  
Carman M. Garufi  
Molly E. Gomez  
Maria E. Guerra  
Karen K. Gulde  
Barbara A. Gunning  
Henry P. Hall  
Dianne Hallworth  
James S. Harrington



Benjamin S. Hart  
Paul and Tanya Henderson  
Stephen S. Hennigan  
Archie L. Henson  
Estela C. Hernandez  
Stephen R. Hernandez  
Steven Hilbig  
Ronald A. Hingst  
Susan C. Hoelting  
Shannon Honrubia  
Jacqueline F. Horras  
Robert Hu  
Joachim J. Huerter  
Richard L. Huff  
Daniel J. Hughes  
Willis J. Humiston  
Mary G. Jackson  
William D. Jackson  
Robert A. Jaklich  
Leroy Jonas  
John P. Jones  
Leonard A. Keyes  
C.P. Kinder  
John F. Kinney  
Melanie Kirk  
Eugene J. Knopik  
Thomas C. Kopacsi  
Candace J. Kuebker  
Wilfred J. Lamm  
Las Palapas Callaghan LTD  
Anna S. LeBlanc  
David M. Leibowitz  
Steven C. Lockhart  
Lockheed Martin Matching  
Gift Program  
Kent D. Lollis  
German Lopez  
Delbert and Dolores Luedke  
Tony L. Lummus  
Terry M. Lurtz  
Lee H. Lytton III  
Stephen F. Malouf  
Paul E. Manna  
Charles G. Marler  
Maria A. Martinez  
John P. Masterson  
Matt.ORG  
Carl V. Mazzocco  
Kevin P. McGuan  
McPherson Dental Center  
David and Norma Medina  
Conan G. Meyer  
Phillip M. Mezey  
Leticia Morales-Bissaro  
Rudy Moreno  
Marshall C. Morrison  
Richard P. Murphy  
Patrick C. Murray  
Timothy S. Myer  
Ervin R. Neatherlin  
Cynthia B. Nelson  
Richard H. Noll and Diane Abdo  
Simone L. Norris  
Mary M. O'Brien  
Edward J. Orr  
Shane D. Ostrom  
Laura L. Parker  
Wilton L. Pate

Bryan and Renee A. Pina  
Karen H. Pozza  
David E. Ramirez  
Resources Global Professionals  
Rose I.R. Riley  
Roy E. Robbins  
Pedro A. Rodriguez  
Layne C. Roetzel  
Wayne Romo  
Thomas J. Ruhnke  
Jerry W. Rumpf  
Patrick M. Sanders  
Fred A. Schellenberg  
Schulenburg Printing and  
Office Supplies  
Linden E. Schuyler  
Yava D. Scott  
David Segapeli  
Rosemary F. Segura  
Juan and Dolores Serna  
Mary A. Sewing  
James C. Sharp  
Patrick M. Sheridan  
Rebecca Simmons  
Richard L. Smith  
Joseph P. Snyder  
The Spectra Energy Foundation  
Phylis J. Speedlin  
John Sporing Jr.  
John F. Sprencel  
State Farm Cos. Foundation  
Eugene R. Steele  
John B. Stewart  
Catherine M. Stone  
Patrick D. Sturdivant  
Steven B. Sylestine  
Daisy B. Thames  
Jodi M. Thesing-Ritter  
Kimberly A. Thornton  
Jacob Tijerina  
Jeffrey E. Tolliver  
Juan A. Torres  
Michael J. Trask  
William S. Trivette  
Paul J. Van De Walle  
Peggy T. Ward  
Stephanie G. Ward  
George A. Watts  
Carl P. Weynand  
Marc K. Whyte  
Wilmer Cutler Pickering Hale  
& Dorr LLP  
Kathleen A. Worthington  
Kevin and Ruth Zealberg

### The Rattlers Club

#### \$100-\$249

According to legend, the University's football field required a pre-game ritual – athletes and faculty carefully removed rattlesnakes from the playing field. The Rattler remains a proud symbol of St. Mary's collegiate spirit.

187th Medical Battalion  
AT&T Foundation  
Amado J. Abascal  
Rosie V. Abreu  
Norman J. Acker  
Phillip R. Acosta  
Richard C. Adam  
Sylvia Adams  
Claudia A. Aguero-Vazquez  
Joe A. Aguirre  
Homer A. Ahr  
Katherine M. Allen  
Mary E. Almanza  
Betty L. Almaraz  
Gary M. Alvarado  
Marcia A. Amy  
Joseph C. Anderson  
Marilyn L. Andrews  
James M. Andry  
Dolores R. Arellano  
Gilbert G. Arias  
Cecilia P. Arias-Cortinas  
Jon-Erik Arjanen  
Jose J. Arzola  
John A. Asbury  
Jerry L. Atherton  
Graham D. Baker  
Angelina L. Balazi  
Robert S. Bambace  
Patrick L. Banis  
Frank A. Barbee  
Edward F. Bareis  
Marcella J. Barganz  
James E. Barlow  
Crystal A. Barrera  
Florencio Barrera  
Jose E. Barrera  
Roberto Barrera  
James E. Barylski  
Michael A. Beam  
William J. Beck  
Linda L. Bell  
Robert L. Beltran  
Gerard J. Bennett  
James H. Bennett  
Brian N. Benschoter  
Joseph R. Berger  
John M. Berghammer  
Pamela M. Bernick  
Raymond G. Bettge  
William W. Beuhler  
Gerry W. Beyer  
Barbara J. Biasioli  
Scott T. Bick  
Paul K. Biever  
Anthony F. Bir  
David Birmingham

Ann P. Black  
A.W. Blakeway  
Leland T. Blank  
William J. Bochat  
Susan E. Bomalaski  
Robert T. Bordelon  
Frederick H. Borg  
Phillip M. Borschow  
Oliver C. Bosbyshell  
Eric C. Botts  
Dan E. Bowman  
Richard T. Brady  
Ronald L. Bramble  
Mary A. Bramblett  
Kenneth P. Brefeld  
Michael J. Bresnahan  
Richard A. Brisco  
Arthur C. Briseno  
Patricia A. Britton  
Bobby G. Brown  
Robert E. Brown  
Sandra L. Brown  
Stewart Bryant  
Alton L. Buehring  
Eva P. Bueno  
Michael D. Bugajsky  
Oscar Buitron  
Joe G. Burkett  
Hansel E. Burley  
Cheri L. Burnside  
Burt Barr & Associates LLP  
Helen E. Butler-Nicholson  
David G. Cadena  
Ronald K. Calgaard  
James R. Callan  
Amanda M. Callaway  
Annita O. Calle  
Ronald Caloss  
Sherry G. Camp  
James M. Campbell  
Robert W. Campbell  
Charles E. Campion  
Robert Campos  
Amado Cantu  
Ramon Cantu  
The Capital Group Cos.  
Charitable Foundation  
Dan L. Carabin  
Andres G. Cardona  
Robert S. Carlson  
Scott S. Carnal  
Arthur J. Carr  
Joseph A. Carreon  
Patricia G. Carrion  
George Carrum  
Michael T. Carter  
Victor L. Casiano  
Ernest A. Casillas  
Roman M. Castillo  
James S. Castro  
Nancy M. Cauble  
Anna-Melissa G. Cavazos  
Johnny N. Cavazos  
Frank J. Cavico  
Louise A. Cayo  
Allen F. Cazier  
Annette D. Celerier  
Steven G. Cennamo

Frank L. Cernosek  
Chaminade Marianist  
Community House  
Edward C. Chan  
Anthony M. Chapa  
Brenda M. Chapa  
Luz E. Chapa  
Calder W. Chapman  
Keith M. Chapman  
Carol S. Chavez  
Daniel Chavira  
Gary R. Chernow  
Graciela A. Cigarroa  
Citi Foundation Matching  
Gifts Program  
Kevin L. Clark  
Charles F. Clausen  
Deidra E. Coleman  
Rene A. Collin  
Harold E. Collins  
Paul E. Collins  
Monica J. Colvin  
Diana S. Compton  
James C. Conroy  
Floyd R. Contreras  
Ruby R. Contreras  
Carolyn E. Cook  
Richard J. Corbett  
Ricardo T. Cortes  
Newton J. Courtney  
John A. Cox  
Gene L. Cross  
Karen A. Crouch  
William R. Crow  
Bill E. Crumlett  
Donna L. Dacey  
Steven Daknis  
Anna P. Damian  
Tom Daniels  
Carolyn S. Danysh  
Gayle H. Dasher  
Susan C. Daubner  
Elizabeth W. Dausin  
Arnold R. Davila  
Concelor D. Davis  
Laura J. Davis  
Michael D. Davis  
Luz S. Day  
George de la Garza  
Thelma A. De Leon  
Rev. Ernest S. Dean Jr.  
Harold T. DeKunder  
George R. DeLeon  
Julia J. Delgado  
Dell Direct Giving Campaign  
Joe G. DeLuna  
Gregory F. DeWinne  
Donna K. Diaz  
William M. Didlake  
Larry P. Diegelman  
Carole and Colby Dill III  
Conrad A. Diric  
Junko Dobson  
Joseph T. Dodd  
Ralph E. Domas  
Jesse P. Dominguez  
Rene I. Dominguez  
John K. Dooley

Thomas J. Dooley  
Linda J. Doubrava  
Jenise Dounson  
William L. Dowdy  
Mary E. Doyle  
Charles B. Dreyer  
Walter E. Drone  
E.B. Duarte Jr.  
Karen M. DuBose  
Cyra S. Dumitru  
Edgar R. Dupre  
Gibson M. DuTerroil  
Robert E. Dynes Jr.  
Charles M. Eads  
Richard L. Edmondson  
Richard F. Eglsaer  
Anita M. Ehler  
Suzanne C. Elias  
Lance F. Elliott  
William G. Elliott  
Jack R. Endres  
Deanna M. Ennis  
Charles R. Erlinger  
Norman A. Ermis  
Walter R. Essex  
James S. Estrada  
Gricelda O. Etter  
Armando Falcon  
Robert L. Faley  
Francis X. Farrell  
Giovanni G. Fazio  
Danette R. Fennesy  
Oscar Fernandez  
Yvonne M. Ferrario  
Roy Fey  
Lisa M. Finnie  
Fish Gear Apparel Inc.  
Victor L. Flieller  
Edward Q. Flores  
Irene H. Florida  
Flour Foundation  
Mark S. Flusche  
William K. Foitik  
Sara T. Folden  
Vincent Fontana  
James J. Forkenbrock  
Tony J. Franckowiak  
Leticia A. Franco-Rueb  
Friends of St. Mary's University  
Police Christmas Gift Program  
Irvin D. Fries  
Gerald M. Fuhrman  
Suzanne M. Furesz  
John L. Furnish  
Giselle F. Gafford  
Norma G. Gaier  
Casey I. Galindo  
Christopher M. Gallegos  
Arthur D. Galvan  
Celina M. Galvan  
Joe and Carmen Gamez  
Esmeralda A. Garcia  
Galo Garcia  
Jose G. Garcia  
Juan Garcia  
Julio A. Garcia  
Kristi M. Garcia  
John H. Garoni

Sarah E. Garrahan-Moulder  
Jorge A. Garza  
Joseph G. Garza  
Margaret Garza  
Emil L. Gavlick  
Richard J. George  
Leonard Giblin Jr.  
John L. Gill  
John F. Gillard  
Kenneth M. Gilley  
Billie R. Gilliam  
Barbara R. Glenn  
Jaime R. Gomez  
James J. Gomez  
Rudolph R. Gonzales Jr.  
Adonicio A. Gonzalez  
Emeterio Gonzalez Jr.  
Francisco J. Gonzalez  
Henry S. Gonzalez  
Robert A. Gonzalez  
Sara S. Gonzalez  
Roger Goodsell  
James J. Gordon  
Harold J. Gorrell  
Lisa G. Grant  
Terrance B. Gratton  
Robert D. Green  
Royce T. Groff  
Andrew L. Grohe  
Sam Gross  
Patricia Y. Guajardo  
Kurt A. Guerdrum  
Joe M. Guerra  
David J. Guerrero  
Homer Guevara Jr.  
Roger Z. Guevara  
Urban A. Gutting  
Bridget K. Guzman  
Trice W. Haas  
Michael F. Haberer  
Herbert H. Hahn  
Elizabeth R. Hajek  
Alexander H. Halff  
Lee Halford  
Sue M. Hall  
Cleveland R. Hamilton  
Dorothea G. Hamlin  
Arthur Hanna  
Mary T. Hanna  
Michael J. Hanners  
Christopher Hansen  
Michael D. Harbart  
Melanie Harper  
Thomas P. Harrell  
Norma V. Harris  
Leticia T. Hart  
Steve B. Hebert  
Paul C. Hedges  
Mary C. Heller  
Russell C. Henarie  
David N. Hernandez  
George B. Hernandez  
Manuel A. Hernandez  
Irma D. Herrera  
Richard Herrera  
Theresa Herrera  
Erin A. Higginbotham  
Daniel J. Higgins

Michael L. Hill  
Thomas R. Hingst  
Mat M. Hitzfelder  
Michael and Leeny Hoffmann  
Leon L. Holland  
George E. Holmes  
David M. Hope  
Lawrence V. Hopkins  
Barbara E. Horan  
Patrick E. Howard  
Walter T. Howard  
Robert I. Howell  
Rev. Albert H. Hubertus  
Mr. and Mrs. Kenneth Hudson  
Juan M. Huerta  
Daniel C. Hunt  
E.L. Roy Hunt  
Charles T. Hutzler  
Djaffer Ibaroudene  
iGive.Com  
John B. Ives  
Takuya Iwasaki  
Celine A. Jacquemin  
Jeffrey L. Janosko  
Larry V. Jendrusch  
Jill R. Jensen-Brye  
Pamela M. Jewell  
Karen R. Johnson  
Thomas A. Johnson  
Noel L. Johnson-Hodge  
Dorothy F. Johnston  
Nancy L. Jones  
John Jowdy Jr.  
Thomas M. Joyce  
John P. Jung Jr.  
Charles J. Jurek  
Gail Kaciuba  
Jordan G. Kaderli  
Lawrence T. Kajs  
Harold H. Kalich  
John J. Kalosis  
Ann D. Karam  
Michael W. Kavanaugh  
Raymond B. Keating  
Mike and Lori Keeffe  
Michael G. Keller  
Estelle Kellmann  
Alice H. Kersnowski  
Norma S. Ketchum  
Paul T. "Rocky" Kettering  
Grace E. Keyes  
J.D. King  
Alfred H. Kircher  
Patrick N. Klasing  
Regina D. Klemcke  
Maurice L. Kliever  
Theresa M. Knight  
Ruth S. Knox  
Jerome E. Koch  
Robert W. Kosar  
Siobhan F. Kratovil  
Frederick E. Kraus  
Vincent V. Krause  
Francis J. Krauss  
James L. Krenek  
Gus J. Kroschewsky  
David and Michelle Kuebker  
James S. Kuhl



John C. LaCoke  
Alan N. Ladd  
Jennifer M. LaFoy  
Grady L. Lagleder  
C.L. Lagutchik  
Mary E. Laminack  
Joan M. Lamm-Tennant  
Ann L. Lamon  
Michael B. Lane  
B.J. Lange  
Max T. Langley  
Mary J. Lara  
Marvin P. Laskowski  
Jeff R. Latimer  
Gary E. Legan  
Jose A. Leija  
Cheryl C. Lemon  
Platon Lerma  
Robert C. Letsch  
Floyd F. Lewis  
Thomas V. Lewis  
Jennifer J. Lezak  
Susan M. Lierz  
Lisa's Mexican Restaurant  
Lorien K. Little  
Wayne S. Livingstone  
Juan Longoria  
Lilliana P. Lopez  
Lionel Lopez  
Robert E. Lorenz  
William G. Louis  
Jackson B. Love  
Shawn M. Lovorn  
Anna M. Lozano  
Nettie and Jose Lucio  
Margaret Y. Luevano  
Milton J. Lutz  
Douglas P. MacLachlan  
John R. MacRae  
Lauren W. Madrid  
Anthony Magaro  
Anca Magiru  
John C. Maguire  
Courtney S. Marcus  
Mark E. Marek  
Luis C. Marquez  
Alejandro F. Martinez  
Azalia V. Martinez  
Belda I. Martinez  
Christopher and  
Veronica Martinez  
Daniel M. Martinez  
Deanne V. Martinez  
Fernando Martinez  
Sean P. Martinez  
Wayne D. Marty  
Edward R. Matjeka  
Fay M. Matthews  
Ronan B. McAshan  
Paul D. McCarthy  
Darrell McClanahan  
Betty McClinton  
Theresa A. McClure  
Timothy S. McCormick  
Patrick K. McDowell  
David F. McGrevy  
William L. McKinney  
Amy Shelton McNutt Trust

Earl C. McSwain Jr.  
Andrew Medina  
Ann H. Megee  
David E. Melchor  
Alejandro Mena  
John A. Menchaca  
Jesse I. Mendez  
Alicia G. Mendoza  
Merrill Lynch & Co.  
Foundation Inc.  
William D. Meskill  
Christopher P. Metress  
Anthony B. Meurer  
James A. Meurer  
Mike's Rookies Inc. (Beverage  
Catering by Rookies Bar)  
Mark H. Miller  
Ricardo Miner  
Robert J. Mirabal  
John R. Miranda  
Jacqueline L. Moczygemba  
Melvin E. Modderman  
David Moeller  
Mark A. Monfrey  
Jules C. Monier  
Rev. George Montague, S.M.  
Rafael G. Moras  
Emily Moreland  
Dennis L. Moreno  
Jennifer M. Moriarty  
Mark Morris  
Gary W. Mosley  
JoAnne M. Moulder  
Edwin L. Mueller Jr.  
Epigmenio Munoz  
Gerard E. Muraida  
Michael M. Murphy  
Mary A. Murray  
Jimmie M. Najvar  
Daniel A. Naranjo  
Edward H. Neal  
Judith H. Neff  
Bernard C. Nelson  
James F. Neumann  
Gloria G. Nieto  
Connie Nixon  
Marcel C. Notzon II  
Bryan R. O'Boyle  
Debra A. O'Boyle  
Chris E. O'Connor Jr.  
Marivel and Juan Ojeda  
Robert R. Ornelas  
Rene Ornes  
The Orsatti Dental Group  
Maria Elena C. Ortega  
Elia Ortiz  
Nancy and William Otto  
Philip G. Otto  
Patricia R. Owen  
George Ozuna  
Nelson Pacheco  
Josie C. Palacios  
Paul R. Paquelet  
Troy E. Patterson  
Gregorio C. Pedroza  
Barbara Peeler  
Armando Perez  
Diana M. Perez

Jesusita A. Perez  
Howard W. Pettengill  
Pfizer Foundation Matching Gift  
Gus Pflugmacher III  
John S. Phelan  
Kimberly M. Phillips  
John and Phyllis Pickard  
Andrew W. Pickens  
Joe A. Pina  
Michael T. Pledge  
Anthony J. Pogorelc  
Victor J. Pohler  
Kenneth O. Pohlmann  
Donald K. Pollard  
Stephen J. Pons  
Bill D. Pope  
Timothy Powell  
Gerald E. Poyo  
David C. Pozzi  
Frank W. Price  
Luke and Cecil Proctor  
Teri J. Proctor  
Bryan J. Prukop  
Pulman Cappuccio Pullen  
& Benson LLP  
Jerilynn W. Putnam  
Gilbert D. Pyka  
Anthony Quante  
Marjorie A. Quarles  
George F. Rabe  
David W. Rainosek  
Stephen J. Rambie  
Anthony T. Ramirez  
Susan K. Ramirez  
John J. Range  
Henry Rangel  
Ralph L. Rapp  
Katherine E. Ray  
Carol L. Redfield  
Bonnie Reed  
Michael F. Reimherr  
Irene Rendon  
Maria P. Reyes  
Gilberto Reyna  
Julie Reynolds  
Donald H. Ribbing  
Daniel C. Rigney  
David Rilling  
Marilyn A. Ritchey  
Monica H. Rivera  
Grady L. Roberts Jr.  
Andrew A. Rodriguez  
Richard J. Rogers  
Juan Romero  
Paul R. Root  
Dorothy A. Rosales  
Stephen E. Rosenauer  
David F. Rosow  
Jan S. Ross  
Elizabeth A. Rothwell  
Charles H. Ruble  
James M. Ruiz  
Marco A. Ruiz  
Paul F. Ruiz  
F. Bernard Rust Jr.  
Gene E. Ryder  
Edward S. Saconas  
Paul S. Saenz

Wayne A. Saiz  
Alex Salaiz  
Gloria A. Saldana  
Selika Z. Salinas  
San Antonio Knife & Fork Club  
San Antonio Women's Chamber  
of Commerce  
David A. Sanchez  
Gabriel R. Sanchez  
Gilbert A. Sanchez  
Imelda Sanchez  
Isaac C. Sanchez  
Johnny R. Sandoval Jr.  
Rudolfo Sandoval Jr.  
Cynthia A. Santos  
Harley S. Savage  
Gregory and Ellen Sawko  
W.C. Sawyer  
Robert S. Schanhaar  
Clarence A. Scheel  
Robert C. Scheibel  
John F. Schilling  
Michael G. Schlafly  
Melvin A. Schoech  
B.B. and Estella J. Schraub  
Charles Schulz  
Gordon E. Schutze  
Sol Schwartz  
Gary L. Schwarz  
Dennis R. Scotka  
Michael and Emilia Segura  
Naida S. Segura  
Josef E. Seiterle  
Eugene J. Sekula  
Mark and Lee Ann Shamblin  
Benjamin F. Sharp  
Martin J. Shaughnessy  
Henry S. Shaw  
Connor G. Sheehan  
Kenneth J. Shelley  
James R. Sherwood  
Cynthia S. Sias-Kaderli  
Aseem Sinha  
Slack & Davis LLP  
P. Randolph Slaughter Jr.  
Andrea D. Smith  
Michael and Debra Smith  
William E. Smith  
Clarence G. Sobczek  
Paul D. Sodeman  
Brenda Solano  
Robert O. Sosa  
Teresa R. Sosse  
L.J. Spengler  
Kirsten Spevak  
Caroline F. Squires  
Paula X. Stallcup  
Robert A. Steidel  
Connie L. Stein  
Richard J. Stencil  
Hilda P. Stevens  
J. Barry Stevens  
Orlynn M. Storlie  
Alma M. Studer  
Ramon A. Suarez  
Gerard J. Sulaica  
William T. Sullivan  
Ben J. Sultenfuss

Robert L. Summers  
Robert J. Sweeney  
Lori A. Swete  
Elizabeth R. Swize  
Ambrose A. Szalwinski  
Nada I. Taha  
J.E. Talarski  
Elizabeth P. Taliaferro  
Gerald R. Taliaferro  
Richard S. Taliaferro  
Nancy Talkington  
Matthew H. Talty III  
Martha B. Tanner  
Wilburn G. Tanner  
Katherine A. Tapley  
Robert J. Tarrillion  
Lily M. Tarrillion-Cazares  
Ralf E. Taupmann  
Clifford M. Tebeau  
Carlos G. and Myra R. Tejada  
Wanda L. Thedford  
Kenneth W. Thompson  
Tresa H. Thornton  
Lawrence and Alisa Tippen  
John J. Tobin Jr.  
Terry Topham  
Rudy Tovar  
Clifford L. Trowbridge  
Janice M. Troy  
Lloyd C. Tschirhart  
Jeff R. Turner  
Thomas L. Turner  
Paul X. Uhlig  
Berend M. Van Der Meer  
James F. Van Houten  
Teresa M. Van Hoy  
Edward A. Vara  
Arnold B. Vardiman  
Jose F. Vasquez  
Manuel C. Vasquez  
Roberto Vela  
Romeo A. Vela  
Augusto A. Vidales  
Daniel P. Villanueva  
Maria I. Villanueva  
Felipe M. Villarreal  
Peter A. Villarreal  
Sylvia F. Villarreal  
Ronnie L. Vinson  
Kenneth E. Waclawczyk  
Lawrence W. Wagner  
Mary Kay Wakely  
Stephanie R. Walker  
Linda M. Wasserman  
Gail Weatherby  
Patrick W. Webb  
Julie H. Weber  
John B. Webster  
Gregory J. Weisbruch  
W.D. Weisbruch  
Joseph D. Weiss  
Orion J. Welch  
Gunther Weniger  
David L. Wenzel  
Stephen G. Werkmeister  
Rupert J. Weynand  
Michael A. White  
Kathleen A. Whitten

Phyllis K. Wick  
Melvin Wiggins  
Karyn S. Williams  
Francey Jill Wilson  
Lindsay Wilson  
Miguel D. Wise  
Necia D. Wolff  
Sherry A. Wood  
Cheryl M. Wright  
John B. Wright  
Matthew E. Wueste  
Wilson M. Yager  
Elsa O. Ybanez  
Dora Ybarra  
Helen J. Youngblood  
Mary A. Zaldivar  
James P. Zeleznak  
Edgar G. Zepeda  
Edward J. Zinsmeister  
Rodney R. Zuercher

**In Memory of ... The following gifts were made to the University in loving memory of departed family, friends and colleagues. The memorialized individuals are in bold type.**

**Werner R. Anders**  
Kathy M. Orsak  
**Babe**  
Caroline Byrd  
Rose Marie Cutting  
Timothy Powell  
Elizabeth Skipper  
**Brother Marion Belka, S.M.**  
Edward and Linda Boenisch  
**George A. Benz**  
Roy E. Robbins  
**Bernard A. Bernsen**  
Alton L. Buehring  
**Adora Beyda**  
Mary Ann Blume Penzel  
**William and Isabel Boehme**  
Gerard and Elaine Boehme  
**Jim Brister**  
Charles M. Eads Jr.  
**Celia Jo Brown**  
Patrick L. Wright  
**Lee F. Brown**  
C. Michael Schill  
**Walter Marshall Burnett**  
Christopher Calabro  
Carol German  
John, Carol, Stacy and Families  
Jan S. Ross  
**Rev. Vincent Capodanno, M.M.**  
Amador P. Hinojosa  
**Ken Carey**  
Carole and Colby Dill III  
Mary and David Heller  
Judith H. Neff  
Ramon A. Suarez  
**Richard D. Castillo**  
Cheri L. Burnside  
Elaine Basey Dolt  
Cheryl A. Hollenshead

Jonathan D. White  
**James N. Castleberry Jr.**  
Richard T. Brady  
Robert T. Buchanan  
Frank and Harriet Christian  
Henry and Marjorie Christopher  
Lukin T. Gilliland Jr.  
E.L. Roy Hunt  
Daniel H. Jones  
Patrick and Joan Kennedy  
J.B. Love Jr.  
Margaret M. Maisel  
Mary Ann C. Moloney  
James W. Moore  
Nancy Lipsitt Otto and Family  
Josef E. Seiterle  
Jill and Steve Souter  
George H. Spencer Jr.  
The Sunshine Committee of  
Judson Montessori  
Patrick H. Swearingen Jr.  
Ann Denton Wells  
**Sister Christine Catron, S.S.N.D.**  
Dora J. Martinez  
**Thomas J. Chiminello**  
Frederic W. Morton Jr.  
**Jose M. Cimadevilla**  
Thelma De Leon  
Esmeralda A. Garcia  
Bryan J. Prukop  
**Brother Edward Collignon, S.M.**  
Eugene R. Steele  
**Gaither C. Cooke Jr.**  
The Cooke Family  
**Benjamin Corbo**  
Edgar and Marlene Dupre  
**The Crane Brothers**  
Samuel J. Buchanan  
**Bill Crane**  
Eric C. Botts  
Steven G. Cennamo  
Anthony M. Chapa  
William C. Rogers  
Richard J. Steneel  
**Brother Andrew Cremer, S.M.**  
William E. Ivy Jr.  
**Sheryl Cross**  
Gene L. Cross  
**Sofie Cruz**  
Mary Almanza  
**Walter and Christine Daut**  
Donald W. Daut  
**Aurora Davis**  
Mark K. Davis  
**Donald E. Davis**  
Mary Almanza  
Timothy M. McInnis  
Daniel Rigney  
Katherine Trent  
**David DeCock**  
Greg DeWinne  
**De La Maza**  
George E. Ware  
**Daniel F. Derrick Sr.**  
Daniel F. Derrick Jr.  
**James V. Derrick**  
Rebecca Porter Millikin

**Angie Q. Dominguez**  
Jesse P. Dominguez  
**Benilde Dominguez**  
Sabina Ramirez  
**Paul Donnelly**  
Paul Manna  
**Patrick H. Dooley**  
Thomas J. Dooley  
**Thomas Drillette**  
Walter "Junie" Kahl  
**Rose Mary Droke**  
Kathy E. Freeze  
**Carl E. Edlund**  
Edgar and Marlene Dupre  
Very Rev. Joseph Ei, S.M.  
Jerome H. Jurena Jr.  
Carroll T. Keller  
John A. Menchaca  
Southwest Research Institute  
**Mr. and Mrs. Charles E. Eschmann**  
Gerard J. Eschmann  
**Cecilia Fernandez**  
Sylvia F. Villarreal  
**Carl Fitzgerald**  
Laura Besze Ramirez  
Janice M. Troy  
Susie P. Wacker  
**Guillermo Flores**  
Jesusita Aleman Perez  
**Joe E. Flores**  
Belisario J. Flores  
**Mr. and Mrs. Edward Frels Sr.**  
Dorothy Frels Johnston  
Jane B. Fugate  
Gilbert A. Sanchez  
**Alfonso Garcia**  
Cindy T. Garcia  
**Angelica G. Garcia**  
Rafael Garcia Jr.  
**Cristina C. Garcia**  
Julio A. Garcia Jr.  
**Elizabeth Garcia**  
Paul Garcia  
**Jessica M. Garcia**  
Victor L. Casiano  
Lila Galindo  
Friends of Jessica Garcia  
Gilbert's Food Marketing  
Sam J. Guido  
Las Palapas Bandera LTD  
Reuben and Jacquelyn Loeffler  
Sadie R. Majors  
Gary W. Mosley  
Maria Elena C. Ortega  
Josie C. Palacios  
David J. Reimherr  
Richard J. Rogers  
Raul Andres Saldana  
Elizabeth G. Scarlett  
Rosendo and Mary Lou Valdez  
**Humberto and Roman Garza**  
Esther G. Garza  
**William R. and Marilyn Glenn**  
Wayne M. Glenn Family  
**Brother Robert Godfrey, S.M.**  
Sandra M. Vasquez-Kayruz



**Brother Paul C. Goelz, S.M.**  
Robert P. Roy  
**Jesus Fernando and Maria Elena Gonzalez**  
Charles and Adriana Villafranca  
**Mary Louise Gonzalez**  
Edgar and Marlene Dupre  
**Rev. John Gorman, S.M.**  
Donald H. Ribbing  
**Brother James F. Gray, S.M.**  
Kathleen M. Gray  
**Stephen Paul Grega**  
Frederic W. Morton Jr.  
**Ernestina Diaz Guajardo**  
Ruben J. Gutierrez  
**Mr. and Mrs. J.M. Guerra**  
Joe A. Guerra  
**Dixon Gulley**  
Leon F. Pesek  
**Norma Jean Gutierrez**  
Mary Almanza  
**Brother Frank Gutting, S.M.**  
Urban A. Gutting  
**Paul Haass Sr.**  
Larry and Neta Schott  
**Mr. and Mrs. Frank M. Hall**  
Frank J. Hall  
**Brother William J. Hamm, S.M., Ph.D.**  
Esther Cabrera  
Frank W. Doerfler Sr.  
Giovanni G. Fazio  
Alfred H. Kircher Jr.  
James P. Lincoln  
Juan A. and Dolores R. Serna  
John B. Stewart  
**Brother John Hammon, S.M.**  
Alejandra L. Ugarte  
**Rosemarie Rodriguez Hammon**  
Robert G. Rodriguez  
**Doreen V. Hankins**  
Rev. Nathaniel A.B. Hankins  
Sanders F. Hawkins  
Rev. Wilburn G. Tanner  
**Joe Hazel**  
James and Karen Pippard  
**Eleanor Hewing**  
Calder W. Chapman  
**Mr. and Mrs. James T. Hickey**  
James B. Hickey  
**Hildegard Meyer Hitzfelder**  
Mat Hitzfelder  
**Anna Maria J. Hodge**  
Noel L. Johnson-Hodge  
**Henry H. Hugman Jr.**  
Sharon Ann Mainz  
**Mr. and Mrs. Joseph Hui**  
Gabriel W.K. Hui  
**H. Zeh Huriburt**  
George A. Watts  
**Alice M. Hutzler**  
Charles T. Hutzler  
**Robert Iredale III**  
Brandi Iredale Howard  
**Charles Jenke**  
Gus J. Kroschewsky  
**John Jennings**  
Sylvia D. Zuniga

**Mr. and Mrs. James Johnston**  
Dorothy Frels Johnston  
**Charles F. Jones Jr.**  
Kerri Lynn Trainer  
**Edward Jordan**  
Keith O. Marshall  
**Rudolph Jungbauer**  
David Jungbauer  
**Gerald Kempf**  
Richard Kleinjan  
**Alice and Frank Kersnowski**  
Chip Hansen and Jane Focht-Hansen  
**Janet K. Klein**  
Jane Klein Cavallaro  
**Maurice Kliewer Sr.**  
Maurice L. Kliewer Jr.  
**Carol Haberman Knight-Sheen**  
Ruth and Irv Barenblat  
James L. Branton  
Betty Dielmann Breen  
Mark and Carolyn Bronston  
C.E. Cheever Jr.  
Mr. and Mrs. Frank P. Christian  
Sharon and Arlan Conner  
Curl and Stahl PC  
Gussie-Mae Dean  
Edward and Lynn Ebenhoe  
Sarah E. Garrahan-Moulder  
Lee Halford Jr.  
Martha Hardwick Hofmeister  
Manuel J. Justiz  
Patrick and Joan Kennedy  
Knight-Sheen Family  
Fred and Claudia Ligarde  
Margaret M. Maisel  
Edith S. McAllister  
Emily Moreland  
Alfred A. Moreno III  
Barbara Hanson Nelleremoe  
Jody Melba Owens  
Bonnie Reed  
Richard and MaryAnn Rhode  
Rhodes and Vela LLP  
Inner Wheel-Rotary Club  
of San Antonio  
Mr. and Mrs. W.A. Salmon  
San Antonio Knife and Fork Club  
San Antonio Women's  
Chamber of Commerce  
James C. Sharp  
John Stuart III  
Mr. and Mrs. Tom E. Turner Jr.  
Leticia Van De Putte  
George J. Williams  
Carolyn Womack  
Carol and Jerry Woods  
Helen J. Youngblood  
**Brother John Kurz, S.M.**  
Alejandra L. Ugarte  
**Charles and Emma Laake**  
Gerard and Elaine Boehme  
**Ralph G. Langley**  
Langley and Banack Inc.  
**Rev. J. Willis Langlinais, S.M.**  
Brenda Maya Chapa  
Edward G. Cole  
Monica M. Gonzalez

Roy E. Robbins  
James Willis  
**Carlos V. Leal**  
Marianne M. Leal  
**Aliette Marchois Lechaux**  
Mary Ann C. Moloney  
**Brother Herbert Leies, S.M.**  
Platon Lerma  
**Lemon Drop**  
Caroline Byrd  
Rose Marie Cutting  
Anne L. Powell  
Tim Powell  
Elizabeth Skipper  
Louisa Vaneck  
Marie M. Wyman  
**Anthony Lewis**  
Merle LaRoche  
**Linda Lopez-Hinojosa**  
Mary Almanza  
Laura Salas  
**Bolera Machia**  
Gilbert J. Garcia Jr.  
**Ludwig Mai**  
James Hartfield  
Roy E. Robbins  
Linden E. Schuyler  
**Brother George Malacek, S.M.**  
Lisa A. Davis  
Barbara E. Horan  
**Bill Mallow**  
Daisy B. Thames  
**Virginia T. Mata**  
Thomas Tamez  
**Bob and Marie Matocha**  
F.L. Matocha  
**Richard Martin Matye**  
Lisa M. Finnie  
**Ruth McCracken**  
Edith and Zora Speert  
**Elizabeth Virginia McGown**  
San Antonio Area Foundation  
**Brother Martin McMutrey, S.M.**  
Charles R. Erlinger  
**Frances Meskill**  
William D. Meskill  
**Dr. Charles Miller**  
Samuel J. Buchanan  
**Elizabeth Montalvo**  
Alice Montalvo Contreras  
**Reyes C. Moreno**  
Alfred A. Moreno III  
**Raul S. Murguia**  
Mary L. Murguia-De La Rosa  
**My Family**  
Mario A. Garcia  
**My Parents**  
Daniel Constanzo Jr.  
**Rev. Charles W. Neumann, S.M.**  
David W. Rainosek  
Donald H. Ribbing  
**Brother Paul Novosal, S.M.**  
Mary Almanza  
Ricardo A. Salinas  
**NYSE**  
Kevin P. McGuan

**Edmund H. Okruhlik**  
Mary Lou Okruhlik  
**Bernardine Orosco**  
Stephanie De La Vega  
**Roy and Mary Ott**  
Richard C. Ott  
**Phillip Owen**  
Patricia Owen  
**Michael "Mike" Pankey**  
Barbara Hardin  
Cynthia S. Sias  
**Patches**  
Caroline Byrd  
Rose Marie Cutting  
Jose and Nettie Lucio  
Tim Powell  
Elizabeth Skipper  
**Maria Correa and Francisco Peña**  
Angelica M. Villarreal  
**Julie V. Peña**  
Maria I. Villanueva  
**Adela and Antonio Perez**  
Armando Perez  
**Stella B. Perez**  
Raul M. Perez  
**Stephen J. Perez**  
Diana M. Perez  
Kenneth Perez  
**John and Tillie Peters**  
Rev. John C. Peters  
**Gilbert A. and Margaret Pyka**  
Gilbert D. Pyka  
**John L. Quinlan III**  
Paul F. McComb  
**Rudolph M. Quintero**  
Hec Quintero  
**Ernest A. Raba Sr.**  
Charles A. Davidson  
**Edmund F. Rague**  
Carlos G. and Myra R. Tejada  
**Rev. John G. Rechten, S.M.**  
Anthony J. Pogorelc  
**Rev. Louis Reile, S.M.**  
Louise Ann Cayo  
**Sunny and Fred Reutlinger**  
Mary Jane Eldred  
**Otto Richter Sr.**  
Otto Richter Jr.  
**John Rickhoff**  
John R. Courtney Sr.  
**Mr. and Mrs. Robertson**  
Linda Robertson Schule  
**William L. Rogers**  
Manuel Pina Jr.  
**Dominic J. Ronzani Sr.**  
David P. Ronzani  
**Joe Rosseett**  
Jose and Nettie Lucio  
**Lynford H. Rowland Jr.**  
Beverly A. Laford  
**Brother Joseph Rudolph, S.M.**  
William K. Foitik  
Alfred H. Kircher Jr.  
Ricardo A. Salinas  
**Mr. and Mrs. Frank H. Ruhnke**  
Edward V. Ruhnke Sr.  
Thomas J. Ruhnke

**Keith A. Russell**  
Mr. and Mrs. Mason William Hamm  
Lindenwood University Faculty

**David Salazar Jr.**  
Jimmy C. Salazar

**Adela M. Sanchez**  
Joe Jesse Sanchez

**Fred Sanchez**  
Thomas Tamez

**Robert P. Sanchez Sr.**  
Joe Jesse Sanchez

**Larry Sanders**  
Gerald R. Saxe

**Lawrence C. Sanders**  
Michael B. Saxe

**Johnny R. Sandoval**  
Johnny R. Sandoval Jr.

**Father Jim Schellenberg**  
Fred A. Schellenberg  
Margaret and Albert Schellenberg

**Brother Joseph Schmidt, S.M.**  
H. Don Henry  
Jackie Fishbeck Horras

**Brother Joe Schneider, S.M.**  
Eugene R. Steele

**Mary Schoellmann**  
Carol S. Pratho

**Chris Schulz**  
Leticia T. Hart

**Adolph J. and Mary Schumann Scheel**  
Clarence A. Scheel

**Brother Louis Schuster, S.M.**  
James R. Schulte  
Jeffrey E. Tolliver  
Stephen G. Werkmeister

**Travis Seabolt**  
Vanessa C. Valdez

**Brother Dan Sharpe, S.M.**  
Ervin V. Grafe  
James A. Manning Jr.

**Joe Shaughnessy**  
Martin J. Shaughnessy

**Brother John Sheehan, S.M.**  
Lionel Lopez

**Ron Sherrard**  
Joe Eberhardt

**Brother Bill Siemer, S.M.**  
Paul E. Gonzales

**James H. Sorenson Jr.**  
Steven D. Taylor

**Shirley Sterling**  
William G. Elliott II  
William A. Kuebker

**St. Mary's University Instructors**  
Peter Hoffmann-Pinther

**Joseph Eugene Sullivan**  
Denise S. Williams

**Brother Ted Szydlowski, S.M.**  
Robert L. Faley

**John "Chuck" Taylor Sr.**  
Edgar and Marlene Dupre

**Makena Thesing-Ritter**  
Jodi M. Thesing-Ritter

**Billy Ted Thompson**  
Bobby and Patricia Brown

Cleveland R. Hamilton  
Doris M. Paar

**Gary Thompson**  
Christopher Gallegos  
Frederic W. Morton Jr.

**Sarah Kathryn Thompson**  
Bobby and Patricia Brown  
John and Stephanie Elliott II  
Roger and Belinda Goodsell

**Sarah and Ted Thompson**  
Carol P. Thompson

**Thomas A. Thorpe**  
Thomas B. Thorpe

**Michele Trankina, Ph.D.**  
Esmeralda A. Garcia  
Luis C. Marquez  
Bryan J. Prukop

**Brother Thomas Treadaway, S.M.**  
Phillip G. Sims

**Paul Valadez**  
Anonymous

**Barbara Marie Valdes**  
Rev. Rey Valdes

**Edmundo Valencia Sr.**  
Crystal A. Valencia

**Gabriel Villa Sr.**  
Lorena Villa Cordova

**Mr. and Mrs. Abraham Villarreal**  
Maria Rosario Euler

**Simona Villarreal**  
Sylvia F. Villarreal

**Hal Walker**  
Friends of Hal Walker

**John F. Wardashki**  
Chris S. Menestier

**Anna Mae Whitehurst**  
Philip S. Day

**Hazel Wiechmann**  
Gordon S. Wiechmann

**Watson W. Wise**  
Watson W. Wise Foundation

**Mary Anne Wolf**  
Thomas and Yvonne Grothues  
Belton C. Wolf  
Juanita Renteria Ybarra

**In Honor of ... The following gifts were made to the University in recognition of the achievements of others. The names in bold type designate the honoree, followed by the donor(s).**

**Caroline Arredondo**  
Wilton Shaw

**Aurelious Bankston**  
Scott San Miguel

**Brother Joe Barrett, S.M.**  
Walter and Ann Duvall

**Brother Roger Bau, S.M.**  
Sara Schurtz Gonzalez

**Brother James D. Billo, S.M.**  
Fernando Martinez

**Black Student Union**  
Latez M. Williams

**Norma Botello**  
Ruben J. Gutierrez

**Caroline Byrd**  
Rose Marie Cutting  
Lucy E. Duncan  
Elizabeth Skipper

**Leo Cancellare**  
Vito G. Cancellare

**Ruben Candia, Ph.D.**  
Kevin E. and Ruth Zealberg

**Ale Cantu**  
Alejandra Cantu

**Charles Cantú**  
Charles M. Hornberger

**Maria Ernestina Cardenas**  
David Lee and Norma Cardenas

**Ruben and Sandra Carrete**  
Sandra V. Carrete

**Michael Catalani**  
Aricie L. Catalani Guertin

**Richard W. Caulder**  
Robert L. Kesl

**Raymond Celeste Jr.**  
Stephen and Phoebe Radacinski

**Ruben Cervantes**  
Steven A. Older  
Melissa M. Valek

**David Courreges**  
Caroline F. Squires

**Jose Cruz**  
Raquel Cruz

**Maria and David Cuevas**  
Amanda Cuevas

**Brother Charles Cumiskey, S.M.**  
William T. Haley Jr.  
E. Penn Jackson Jr.  
Edward R. Matjeka  
Eugene R. Steele

**Thomas Dante**  
Alex Portillo

**M.K. Davis**  
Mark K. Davis

**Rebeckah Day**  
Joshua J. Carrillo

**Delta Zeta**  
Mercedes A. Mendoza

**Diane Dowdell**  
Martha N. Zurita

**Ruben and Veronica Escobedo**  
Ronald K. Calgaard

**Mr. and Mrs. Richard Esparza**  
Dominique D. Esparza

**Robert Ferguson**  
Peggy E. Stover

**Homer Fetzter**  
Joseph H. Minor

**Dr. Garcia**  
Precious Ramirez

**Ramon and Norma Garcia**  
Alejandra Garcia

**Karen Garcia-Rudolph**  
Tricia L. Garcia

**Nandini and Goutam Ghosh-Choudhury**  
Triparna Ghosh-Choudhury

**Maria A. Gonzalez**  
Melissa J. Gonzalez

**Gary Gordon**  
Mark H. Wilson

**Steven W. Gurnell**  
Stephanie Gurnell

**Ben Hart**  
Kayla Galvan  
Erica J. Garcia

**Al Hartman**  
Charles M. Hornberger

**Pat Hazel**  
James and Karen Phippard

**Fermin Hernandez III**  
Allison M. Hernandez

**Arthur and Viola Herrera**  
Douglas A. Herrera

**Frank Herrera Jr.**  
Lawrence E. Noll

**Ronald J. Herrmann**  
Anonymous

**Kenneth Herzig Sr.**  
Arthur Troilo

**Bishop Charles Herzik**  
Anthony H. Rodriguez Sr.

**Daniel Higgins**  
Dessynie Sheffield-Edwards

**Jayson Horn**  
Joseph D. Diaz  
Jayson Horn  
Kevin D. Pegg

**Rev. Cris Janson, S.M.**  
Francisco Gonzalez

**Rev. Conrad Kaczkowski, S.M.**  
Roy E. Robbins

**Greg and Eileen Kaderli**  
Jordan G. Kaderli

**Alice and Frank Kersnowski**  
Chip Hansen and Jane Focht-Hansen

**Elmer Kosub**  
Michael A. Shimek

**Steve Krupp**  
Bruce J. Karulak

**Lamda Chi Alpha**  
Gregory L. Hermann  
Richard Rangel Jr.

**Rev. John Leies, S.M.**  
Robert and Jeannine Engberg

**Jack Paul Leon**  
Charles M. Hornberger

**Jose and Nettie Lucio**  
Rose Marie Cutting  
Nettie R. Lucio  
Willie and Gloria Rosseett

**Nadia and Joseph Madrid**  
Selina Madrid

**J. Christopher Maguire**  
William T. Haley Jr.

**Marianist Brothers and Priests**  
Charles W. Brunner  
Ramon A. Guerra

**Sandee Bryan Marion**  
Solomon Casse Jr.  
Sue M. Hall  
Barbara E. Scharf-Zeldes

**Math Club**  
Frank M. Gonzales III



**Pablo and Maria Mendoza**

Naohmi Mendoza

**Richard L. Mendoza**

Charles A. Mendoza

**Sanjuanita Mendoza**

Virginia A. Mendoza

**Buddy and Anna Meyer**

William A. Kuebker

**Herman "Buddy" Meyer**

Galo and Norma Garcia

Jim and Rita Koett

David A. Sanchez

**Alexandra Miller**

Patricia L. Wall

**Rev. Charles Miller, S.M.**

Samuel J. Buchanan

**John Moder**

Roy E. Robbins

**Mom and Dad**

Stephanie Ordonez

**Manuel and Maria Morales**

Gabriela Morales

**My Family**

Mario A. Garcia

**My Parents, Grandmother and Tias**

Theresa A. Sandoval

**Karen Navarte**

Peggy Curet

**Jose Luis Noriega**

Erika M. Taylor

**Brother Terry O'Connor, S.M.**

Mary Lou Okruhlik

**Claudine Omillian**

Annita O. Calle

**Our Lady of Guadalupe**

Isaias Valera Jr.

**Kenton Pase**

Karen A. Johnson

**Emilie Herrmann Petty**

David and Cynthia McMurray

**Mallory Philman**

Mallory Philman

**Rev. Herbert Pieper, S.M.**

Patrick K. McDowell

**Ken Pohlman**

Jeff Paz

**Carl J. Quezada**

Carl J. Quezada

**Eunice Reyes**

Mary Almanza

**Sandra and Bob Reyna**

Robert H. Reyna

**Mr. and Mrs. Robles**

Dina M. Robles

**Mr. and Mrs. Porfirio Rodriguez**

Teresa Rodriguez Sosse

**Rev. Jorge Roos, S.M.**

Lionel Lopez

**Martin Rosenau and Neomi**

De Anda

George Nuñez

**Archbishop Raymond**

O. Roussin, S.M., D.D.

Rudy Reyes Jr.

**Jaime Manuel Rubalcava**

Valerio J. Vargas

**Rev. Paul Ryan, S.M.**

Thomas R. Hingst

**Scott San Miguel**

Raymund J. Villanueva

**Rev. Thomas Schelbe, S.M.**

Denise M. Taller

**Rosemary Segura**

Kayla Galvan

Talitha Lewis

**Sister Ann Semel, S.S.N.D.**

Caroline A. Byrd

Rose Marie Cutting

J. Michael Daley

Helen Meaney Dudley

William L. Israel

Doris Slay-Barber

**Senior Class Gift Committee**

Philip L. Farias

**Sigma Sigma Sigma**

Veronica R. Velasquez

**Brother Francis Singler, S.M.**

Patrick K. McDowell

**Kathy Sisoian**

Joshua J. Carrillo

**Maria Smith**

Brian Bui

**Cleary Stanley Jr.**

Rev. William G. Tanner

**St. Mary's University and Alumni**

Michael S. Casanova Jr.

**Mr. and Mrs. Phillip R. Sulaica**

Gerard J. Sulaica

**John "Chuck" Taylor**

Christopher A. Taylor

**Brother John Totten, S.M.**

Julio Gonzalez

**Mr. and Mrs. R.B. Treviño**

Paul M. Treviño

**Rodolfo and Bertha Troncoso**

Oscar A. Troncoso

**Mr. and Mrs. Joseph C. Uhlig**

Elizabeth M. Chanoine

**Rogelio and Adelita Valdez**

Vanessa C. Valdez

**Deed Vest**

Emil Gavlick

**Mr. and Mrs. Inocencio Villa Sr.**

David Lee and Norma Cardenas

**Rosemarie Wahl**

Sandra M. Vasquez-Kayruz

**Doug and Anna Wealty**

Stephen and Phoebe Radacinski

**Cynthia Webster**

Peggy E. Stover

**Catherine Whiled**

Cynthia E.J. Gdula

**William Wilson**

Caroline F. Squires

**Mike Wright**

Patrick L. Wright

**Ana L. Zendejas**

Alfredo and Monica Zendejas

**Jennifer Zwahr-Castro**

Anneliese B. New

**Senior Class Gift Donors – The Graduating Classes of Fall 2008 and Spring 2009 and program sponsors.**

Congratulations to these graduates for their generous support and fundraising efforts. They have helped build class unity while giving back to the University and future generations of students.

Ben F. Abila

Christal N. Alexander

Kristianne Alvarez

Therese Alvarez

Jon-Erik Arjanen

Stephanie Arredondo

Bobby A. Baiza

Aurelious R. Bankston

Amanda M. Benavides

Ashton K. Benford

Jose M. Bou

Joseph G. Briones

Brian Bui

Joseph H. Campbell

Vito G. Cancellare

Alejandra Cantu

Sandra V. Carrete

Joshua J. Carrillo

Michael S. Casanova

Alyssa M. Cedillo

Raquel Cruz

Amanda R. Cuevas

Stephanie N. DeLaRosa

Joseph D. Diaz

Tiffany C. Edwards

James Escamia

Philip L. Farias

Valerie Farias

Kayla C. Galvan

Alejandra Garcia

Erica J. Garcia

Mario A. Garcia

Marissa D. Garcia

Triparna Ghosh-Choudhury

Frank M. Gonzales

Derek J. Gonzalez

Emily A. Gonzalez

Jose L. Govea

Stephanie C. Gurnell

Gregory L. Hermann

Allison M. Hernandez

Gabriel O. Hernandez

Ruben J. Hernandez

Jayson B. Horn

Marie K. Hulsey

Alma B. Ibarra

Karen A. Johnson

Carina R. Jones

Natalie M. Lampel

Talitha D. Lewis

Martha E. Lopez

Amber M. Luna

Amy Q. Luu

Selina R. Madrid

Tinotenda M. Madyara

Jose G. Martinez

Daniel E. McCarthy

Charles A. Mendoza

Mercedes A. Mendoza

Naohmi Mendoza

Virginia A. Mendoza

Richard E. Molina

Sanjuanita Moncada

Gabriela Morales

Anneliese B. New

Stephanie Ordonez

Kevin D. Pegg

Mallory A. Philman

Alex E. Portillo

Carl J. Quezada

Precious R. Ramirez

Stephanie N. Ramos

Richard Rangel

John J. Reyes

Robert H. Reyna

Azalea B. Roman

Stephanie M. Romero

Laura A. Salas

Scott SanMiguel

Theresa A. Sandoval

Douglas L. Silva

Jessica Solis

Clayton Sosa

Sarah Swaim

Brandon J. Treviño

Allison M. VandeHey

Juan Vasquez

Veronica R. Velasquez

Blanca Vesa

Raymund J. Villanueva

Braxton C. Watson

Latez M. Williams

Michelle M. Wolford

Z Graphics

Martha N. Zurita

Extending the Tradition of Excellence Campaign

# Winning Teams Build Winning Traditions

*Be a Winner...Join a Team Today!*

## Scouting Report

St. Mary's University is closing in on its deadline to raise \$12.5 million for the Outdoor Sports Complex for baseball, softball, soccer and tennis that will provide outstanding student-athletes with superior fields and courts, expand intramural facilities for all St. Mary's students, and complement our efforts to revitalize the Westside of San Antonio.

## Game Plan

Raise \$5.3 million by this summer, break ground on the Outdoor Sports Complex in summer 2011 and be game-ready within one year.

Chairman of the Board Robert Elizondo (B.S. '67) and President Charles L. Cotrell, Ph.D. (B.A. '62, M.A. '64), are executing the game plan with Campaign Co-Chairs Bruce Vaio and Trustee Dave Dickson (B.B.A. '68).

Joining them is St. Mary's Hall of Famer Buddy Meyer, former head basketball coach and athletics director, who so strongly believes that Rattler outdoor sports teams deserve facilities as superb as Bill Greehey Arena in the Alumni Athletics & Convocation Center, that he's come out of retirement to get in the game.

## Game Strategy

Recruit St. Mary's alumni and friends to put the numbers we need up on the scoreboard.

## Coaching Staff

St. Mary's baseball, softball, soccer and tennis coaches have challenged their former players to raise \$350,000. Also suited up is Rho Beta Gamma Fraternity, whose alumni members are almost halfway to their \$500,000 goal.

So far, the enthusiastic teams have tallied \$1.2 million in gifts and pledges. Join an existing team or create one of your own. Challenge your former classmates to become part of Rattler Winning Traditions at St. Mary's University!



Go to

**[www.stmarytx.edu/g&b/winningtraditions](http://www.stmarytx.edu/g&b/winningtraditions)**

to add your name to the roster of an existing team or create one of your own, or contact the Office of Development at (210) 436-3718 to get started.





St. Mary's coaches, student-athletes and former athletes alike were excited to learn more about the Outdoor Sports Complex at a reception held Jan. 30 on campus. Alumni from the 1950s to just a few short years ago shared stories of their exploits with today's student-athletes. While the Rattlers of yesterday may have played on fields and courts that are wanting by today's standards, the experiences they had resonate with today's student-athletes. And everyone in attendance that special night, from freshmen to those who donned the blue and gold uniform more than a half century ago, agree that St. Mary's athletes need and deserve new and upgraded facilities for baseball, softball, soccer and tennis.



"A new facility is going to help in recruiting and elevate everyone's pride in and commitment to the St. Mary's baseball program. When it opens, this complex is the place the community will be proud of; this is where they'll want to come to see Rattler, regional and national sporting events."

– **Charlie Migl (B.A. '78),  
Head Baseball Coach**



"I'm confident the new look of St. Mary's once the complex is complete will bring a different feel to our campus and neighborhood. Right now, safety and upkeep are at the forefront with outdoor sports. Improving the fields, plus building locker rooms, practice facilities and fan amenities, will be a boost to St. Mary's, to the Westside, and to our sport."



– **Donna Fields (B.A. '87, M.A. '01),  
Head Softball Coach**

**W**ith St. Mary's Alumni Association as its

partner, the University has launched "Access 2010 at St. Mary's," the second generation of last year's hugely successful initiative that offered four-year full tuition scholarships to incoming freshmen who met academic and other eligibility criteria. The 2009 "Access St. Mary's" program, created in response to the nation's troubled economy, made such an impact that the *San Antonio Express-News*

Success begins with access.  
**We cover full tuition**  
for fall 2010 freshmen who qualify.

**ACCESS 2010** at St. Mary's  
Sponsored by St. Mary's University and the Alumni Association



(210) 436-3126  
uadm@stmarytx.edu

To learn more go to [www.stmarytx.edu/access](http://www.stmarytx.edu/access)

A Catholic and Marianist Liberal Arts Institution

recognized it as "making a difference." With Access students making up nearly a third of incoming freshmen last fall, the entering Class of 2009 has higher quality indicators overall, a direct result of the academic strength of Access St. Mary's students, and their retention

rate from the fall to the spring semester is 97 percent. For a second consecutive year, the St. Mary's Alumni Association Board of Directors is sponsoring the program by making a four-year financial commitment of \$100,000 per year.

**To learn more go to  
[www.stmarytx.edu/g&b/access](http://www.stmarytx.edu/g&b/access)**