



ST. MARY'S
UNIVERSITY

Digital Commons at St. Mary's University

Gold & Blue

Gold and Blue

Winter 1995

Gold & Blue, Fall/Winter 1995

St. Mary's University- San Antonio, Texas

Follow this and additional works at: <https://commons.stmarytx.edu/goldblue>

Recommended Citation

St. Mary's University- San Antonio, Texas, "Gold & Blue, Fall/Winter 1995" (1995). *Gold & Blue*. 27.
<https://commons.stmarytx.edu/goldblue/27>

This Book is brought to you for free and open access by the Gold and Blue at Digital Commons at St. Mary's University. It has been accepted for inclusion in Gold & Blue by an authorized administrator of Digital Commons at St. Mary's University. For more information, please contact egoode@stmarytx.edu, sfowler@stmarytx.edu.

Gold & Blue



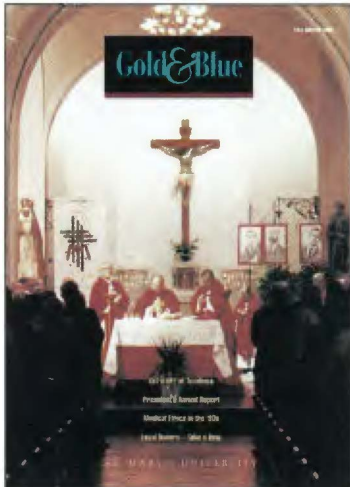
Get a LIFE at Tecaboca

President's Annual Report

Medical Ethics in the '90s

Loyal Donors—Take a Bow

ST. MARY'S UNIVERSITY



Cover

Marianists Celebrate

On Oct. 1 in San Fernando Cathedral, the Marianists of San Antonio celebrated the beatification of three Marianist teaching brothers by Pope John Paul II that same day in Rome. Martyred for their faith in 1936 during the Spanish Civil War, the three Spanish brothers of the Society of Mary were executed by firing squad during the Communists' persecution of the Catholic Church.

Behind the altar can be seen portraits of the three men, from left, Carlos Erana Guruceta, Fidel Fuidio Rodriguez and Jesus Hita Miranda.

Concelebrants at the special Mass are, from left, the Rev. George Montague, S.M.; S.T.D., St. Mary's professor of theology, Archbishop Patrick Flores and Bishop John W. Yanta.

St. Mary's University Mission

St. Mary's University is an independent Catholic institution inspired by the Gospels and shaped by the rich tradition of the Society of Mary (Marianists). Founded and fostered as a community of faith for the advancement of the human family, the university gives Christian purpose and dynamism to a pursuit in which people of varied traditions and experiences unite in commitment to an educational venture, in dedication to a life of scholarship and in the extension of service to society.



Beatification is formally the final phase in the cause of one who is being considered for ultimate canonization, or sainthood. These three men are the first Marianists to receive the honor.

Gold & Blue is produced for alumni
and friends in fall,
spring and summer
by the Public Relations staff.

PUBLIC RELATIONS DIRECTOR

Dianne Pipes

EDITOR

Sylvia A. McLaren

ART DIRECTOR

& ILLUSTRATOR

Steve Weed

PHOTOGRAPHY

Melanie Rush Davis

Scott Schrader

Contents © 1995 by St. Mary's University.
All rights reserved.

**ST. MARY'S UNIVERSITY
ADMINISTRATION**

PRESIDENT

Rev. John Moder, S.M., Ph.D. (B.A. '70)

VICE PRESIDENT,

ACADEMIC AFFAIRS

Charles L. Cottrell, Ph.D. (B.A. '62, M.A. '64)

VICE PRESIDENT,

ADMINISTRATION AND FINANCE

Daniel J. White

VICE PRESIDENT,

STUDENT DEVELOPMENT

Ruth R. Rodgers

VICE PRESIDENT,

UNIVERSITY RELATIONS

Thomas L. Heaton

VICE PRESIDENT,

ENROLLMENT MANAGEMENT

Barry E. Abrams, Ed.D.

ASSISTANT TO THE PRESIDENT

FOR PLANNING AND RESEARCH

Gerard A. Dizinho, Ph.D.

BOARD OF TRUSTEES

Rev. Timothy Dwyer, S.M., (B.A. '57) Chancellor

Gregory W. Crane, (B.B.A. '55) Chairman

Audreyjane Castro, Vice Chairman

Conan Gay Meyer, (B.B.A. '57) Secretary

J. Michael Belz (B.A. '75)

David W. Biegler (B.S. '68)

Brother Jerome Bommer, S.M. (B.A. '55)

Raymond R. Carvajal (Class of '68)

John W. Dewey (B.B.A. '67)

Brother Richard Dix, S.M.

Stephen M. Dufilho (M.A. '69)

Robert Engberg (B.B.A. '60)

Rev. James L. Heft, S.M., Ph.D.

D. Michael Hunter (J.D. '65)

Sister Anna Huth, F.M.I. (B.A. '73)

Fred R. Jones (J.D. '79)

Edward B. Kelley (B.B.A. '64)

Patrick N. Klasing (B.B.A. '71)

Leonard E. Lawrence, M.D.

Pat A. Legan (B.A., J.D. '46)

Vincent Lin, Ph.D. (B.S. '66, M.A. '68)

C. Gay Meyer

Rev. John Moder, S.M., Ph.D. (B.A. '70)

Max Navarro (B.A. '77, M.S. '80)

Al J. Notzon III (B.A. '60)

Robert S. Rosow (B.S.C. '45)

Rev. Ralph Siefert, S.M., D.Min. (B.A. '68)

Phyllis B. Siegel (J.D. '79)

Alfred J. Stein (B.S. '55)

Iris Stewart

Very Rev. Lawrence J. Stuebben

John T. Stupka

Rev. Rudy Vela, S.M. (B.A. '76)



Contents

- 2 Teaching Medical Ethics**
by the Rev. William J. Ellos, S.J., Ph.D., Charles Miller Professor of Medical Ethics
His courses always focus on actual cases.
- 3 What a Great Way to Get a LIFE!**
by Susan Toudouze Brotheman, Free-lance Writer
The Living in Faith Experience (LIFE) 25th anniversary at Tecaboca was a joyous celebration drawing 500 people.
- 7 President's Annual Report for 1994-95**
by the Rev. John Moder, S.M., Ph.D. (B.A. '70)
St. Mary's strategic plan looks to an exciting future.
- 11 Honor Roll of Donors in 1994-95**
-
- 6 Alum News**
Thoughts from Alumni Association Past President Patrick N. Klasing (B.B.A. '71)
- 23 Campus News**
- 26 Class Notes**
by Rissa Schultz (B.B.A. '85, M.A. '93), Associate Director of Alumni Relations

About This Issue

In the fall/winter magazine, we traditionally publish the president's annual report and a list of our esteemed donors in the academic year ending May 31.

That means we have space for only a couple of features. This issue we've chosen a report on the 25th anniversary celebration of the Life in Faith Experience summer camps at tranquil Tecaboca (page 3) and a description of the important work of the Charles Miller Professor of Medical Ethics (page 2).

Father Moder's report and the two features have a lot in common. They all portray the avowed Marianist mission of educating young people as whole persons and extending service far beyond the boundaries of the campus.

With this spirit in mind, we extend blessings for the holidays and holy days to all our readers and their loved ones ...

Sylvia McLaren, editor

Teaching Medical Ethics

by the Rev. William J. Ellos, S.J., Ph.D.,
Charles Miller Professor of Medical Ethics

St. Mary's is well known for its fine premedical program, ranked for many years in the nation's top 10 universities for acceptances, especially of Mexican-American students, into medical schools. So it is highly appropriate to have an endowed professorship in medical ethics and that the chair-holder fulfill, as I do, the position of adjunct professor at the University of Texas Health Science Center at San Antonio.

I came to St. Mary's after teaching for 13 years in the philosophy department and medical and nursing schools at Loyola University, Chicago. As an active Fellow of the University of Chicago's medical ethics program, I wrote two books and several articles on ethics.

Ethics Courses

My St. Mary's duties involve teaching medical ethics and professional ethics. Both courses provide considerable ethical theory but always focus on actual cases. Included are discussions and interaction on key health issues such as new fertilization techniques, abortion, euthanasia, physician-assisted suicide, truth-telling and confidentiality to patients, and physician-patient and nurse-patient relationships. I also deal with social questions such as problems in medical research and reform of the health-care system. Professional ethics also covers problems in business and legal ethics.

My duties at the University of Texas Health Science Center include teaching medical students in class and at patients' bedsides and participating in, and often leading, faculty seminars.

Santa Rosa Hospital

As a member of the Santa Rosa Institutional Review Board, I regularly discuss and vote on the hospital's



research proposals. I also give case-study seminars for the hospital's nurses and physicians and serve on the hospital's ethics committee.

Other activities include exploring issues in health-care ethics with social workers and working with the Catholic Physicians Guild and the Cancer Therapy Research Institute of San Antonio. This involves teaching, consulting at bedsides and presenting recent developments in health-care ethics to medical teams.

Public Lectures

In conjunction with the St. Mary's Center for Professional Ethics, I share public presentations with medical professionals. For example, with Dr. Daniel Von Hoff, research director of the San Antonio Cancer Therapy and Research Center, I gave a public presentation on the ethics of cancer research. On another occasion, I discussed the ethics of AIDS-testing with Dr. Mark Siegler, director of the MacLean Center for Clinical Medical Ethics at the University of Chicago. His Chicago program, incidentally, is rated the best of its kind in the nation.

I also fulfill speaking engagements around the country and the world. Last year, for example, I presented the history of hospitals' ethics committees and end-of-life concerns to an audience at the Center for Health Policy and Ethics at Creighton University, Omaha. In the Netherlands, I lectured on sexuality, resuscitation policies, embryo experimentation and genetic

counseling at the European Bioethics Seminar sponsored by the Catholic University of Nijmegen; and in Yokohama, Japan, in my role as business ethics consultant for the Motorola Corp., I presented case studies to a group of the corporation's senior vice presidents.

The Miller Endowment

The Miller Professorship endowed by the Miller family memorializes the late Charles

Miller, M.D., father of the Rev. Charles H. Miller, S.M., dean of the St. Mary's School of Humanities and Social Sciences.

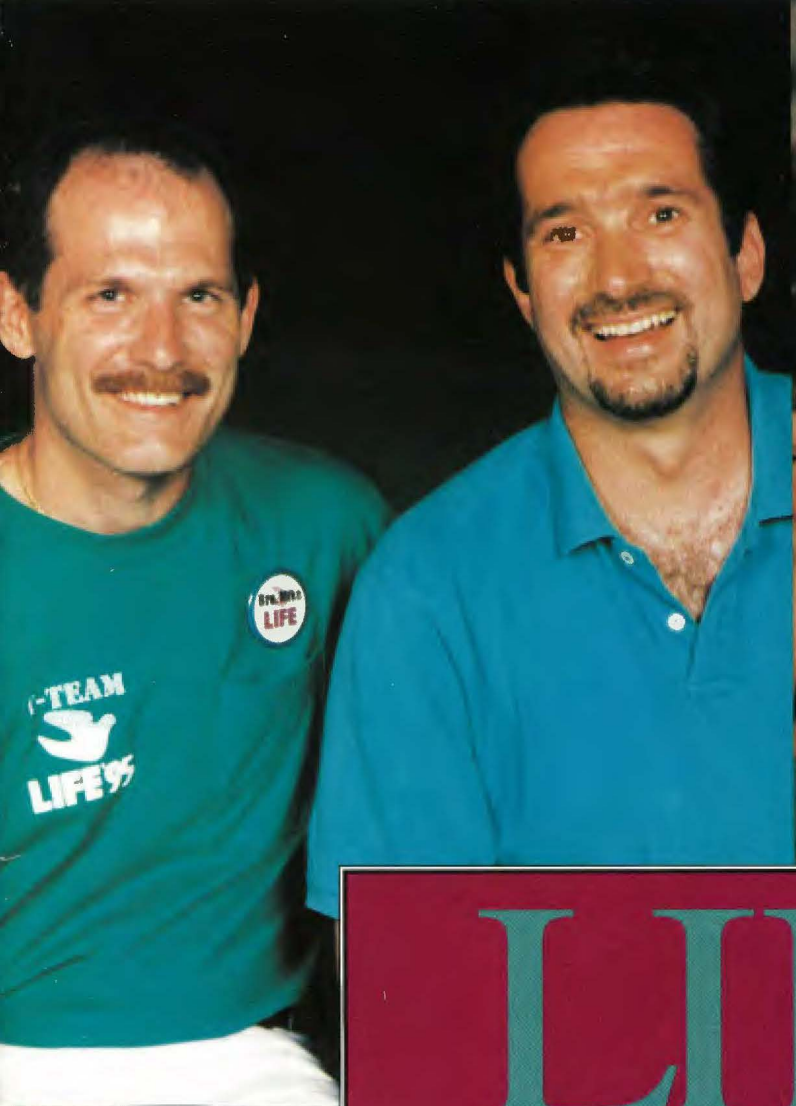
Dr. Miller was a physician in the small Kansas town of Parsons, where each year the holder of the professorship honors his memory with a public lecture. I feel the Miller professorship has a small-town connection with my own background, for I also came from a very small town in Wisconsin — Hurley.

I am honored to be associated with the Miller family, and I enjoy associating with the St. Mary's Marianist priests and brothers who care for us here at the university. Though I am a member of the Society of Jesus, I can hardly be in better company! ■



The author's wide health-care experience includes studies with the American Society of Law and Medicine, work in hospitals

throughout China and directing a public television miniseries on social and public policy issues in medicine and health care. His degrees are from St. Louis University and the Gregorian University, Rome.



LIFE



What a Great Way to Get a LIFE!

by Susan Toudouze Brotheman, Free-lance Writer

David Kauffman (B.B.A.'82) first set eyes on St. Mary's University in summer 1977. A high school junior from St. Louis, he was on his way back from a Living in Faith Experience (LIFE). An annual workshop for high school juniors and seniors, LIFE has been sponsored by the St. Louis Province of the Society of Mary for the past 25 years at the Marianist Brothers' Texas Catholic Boys Camp (Tecaboca) in the Texas Hill Country.

Dave's wife, Leah ("Missy") Bumpus Kauffman (B.B.A.'87, J.D.'92), discovered St. Mary's University in the same way. In 1981, she too, toured the campus after attending LIFE. On returning to her home near Fort Worth, she decided to enroll at St. Mary's.

"I met the Marianists for the first time at LIFE," says Missy, "and because of the confidence and self-acceptance I had gained there, I knew I could benefit from a Marianist experience in my college education."

The Kauffmans' feelings about LIFE and St. Mary's are common to hundreds of St. Mary's students and alumni who discovered the university through LIFE workshops as high school students.

Building Christian Communities

The one-week workshop is designed to provide junior and senior high school students from all over the country with skills in building Christian communities and in serving as ministry leaders in their Catholic schools or parishes. In an intensive week, teams of adult leaders present issues such as family relationships, problems facing youth, the importance of self-image, the nurturing of peace, justice and creative forms of prayer and worship. The workshop is designed and coordinated by Marianists and lay Catholic youth ministers. Traditionally LIFEers from beyond San Antonio tour the city and St. Mary's.

"LIFE has always involved many of our staff, students and alumni and is a great source of student recruitment," says St. Mary's president, the Rev. John Moder, S.M., Ph.D., (B.A.'70). An active leader in LIFE's coordinating team from 1980 to 1988, he says, "The LIFE Movement is among the best ways to pursue the ideals of our founder, William Joseph Chaminade, that with the youth and lay community we can rebuild our country through communities of faith."

Twenty-fifth Anniversary

LIFE's 25th anniversary on Aug. 5 at Tecaboca was an exciting reunion of nearly 500 present and past LIFEers with their families and friends, many of whom are St. Mary's students and alumni. They celebrated with an outdoor youth liturgy, a retrospective slide show, dancing and music by Dave Kauffman and other LIFEers.

Among those trading memories were Chris Horner (B.A.'81) and Rosemary Kavanaugh Behan (J.D.'89) and her husband, Mike (B.A.'79).

"LIFE has spurred a lot of interest in the university," says Horner, who came from St. Louis to attend LIFE in 1976. "Many parish and high school youth groups have their first experience of Marianist charism at LIFE camp, and those attending see that St. Mary's University puts the same emphasis on community-building and personal and spiritual growth."

Nicki Beaudoin Prevou (B.A.'84) is the director of the LIFE Alumni Project, a follow-up program in the LIFE Movement. "Because LIFEers are young people active in parish youth groups or high school campus ministries, the quality of campus ministries is often a factor in their college decision," she points out. "St. Mary's excellent Campus Ministry program has drawn many LIFEers to the university."

Among them is Ricky Wright (B.B.A.'91), campus minister at San Antonio's Central Catholic High School, a Marianist institution that prepares young men for college. Originally from Arlington, Texas, Wright attended the 1986 LIFE, earned a Marianist Heritage Student Leadership Award while a senior at St. Mary's, and now assists in coordinating the LIFE Alumni Project retreat each summer in Kerrville, Texas. He and his wife, Ruth (B.S.'91), are active lay Marianists.

Family and Friends Celebrate

An important part of this year's 25-year LIFE celebration was the LIFE Alumni Retreat at Mt. Wesley Conference Center in Kerrville. The gathering included many St. Mary's students and alumni. They included Velma Herrera Schmidt (B.A.'87) and Bob Schmidt (B.A.'86), leaders of a retreat track for teen-agers who are past LIFERS, and newlyweds Glenn (B.A.'90) and Kate Mitchell of St. Louis, who met as staff members at the 1992 LIFE camp.

Kurt (B.S.'85, M.A.'91) and Michele Weber, with baby Andrew were also present. "LIFE was the reason I studied at St. Mary's," says Kurt, a native of Milwaukee. "As a lay Marianist and a leader within the LIFE Alumni Project, I have a chance to give back to other young people what I received—the wonderful prayer experiences, family ministry, camaraderie and team spirit, all based on Marianist ideals and the ideals of St. Mary's."

The Marianist commitment to young people is what drew two 1973 LIFERS not only to St. Mary's but into religious life. Brother Jim Barrette, S.M. (B.A.'80), and Brother Mike Gillespie, S.M. (B.A.'78), from Marianist high schools in Milwaukee and Omaha respectively, are now diocesan-level coordinators in youth ministry in Houston and leaders in the LIFE Movement. "Through LIFE and the LIFE Alumni Project, we offer a total youth ministry linked with the concept of family," Brother Jim says. "Ministry begets ministry, and I am convinced that LIFE has an impact on parishes, schools, individuals and the church. LIFE offers a very powerful experience."

Meeting Youths' Needs

Brother Paul Combest, S.M. (B.B.A.'88), a pastoral associate at St. Mary's Campus Ministry, and Marianist Sister Grace Walle, F.M.I., (B.A.'77), campus minister at the St. Mary's School of Law, have been deeply involved with LIFE leadership for many years. "We meet youth at LIFE and here on campus at a very significant time in their spiritual development," says Sister Grace. "A remarkable number of lay people stay connected with LIFE and the whole Marianist family, and most of those people are connected to the university." Adds Brother Paul, "LIFE fits our Marianist mission: empowering people and revitalizing the church. With the success of LIFE and the growth of Christian Life Communities at the university, we are meeting the needs of youth. The spirit cannot be stilled. We have to move with the spirit."

For more information about the LIFE Movement and opportunities available for youth, young adults and families, call Nicki Prevou, director of the LIFE Alumni Project, (800) 454-3389 or (817) 572-7250. ■

Photos on page 3, left to right are: Youth Ministers -- Brothers Mike Gillespie, S.M. (B.S. '78), left, and Brother Jim Barrette, S.M. (B.A. '80), leaders in LIFE activities, are coordinators in youth ministry in Houston.

Family Party -- Rosemary Kavanaugh Behan (J.D. '79) and husband Mike (B.A. '79) share the evening entertainment with their children Chris and Claire.

On the Ball -- Could baby Andrew Weber be training early for Rattlers basketball? The son of Michele and Kurt Weber (B.S. '85, M.A. '91), he is shown here with Velma Herrera (B.A. '87) and Bob Schmidt (B.A. '86).

The Rev. Tim Dwyer, S.M. (B.A. '57), provincial, St. Louis Province of the Society of Mary, and chancellor of St. Mary's University, took a leading role at the LIFE anniversary celebrations.

TECABOCA 58 Years Of Service

Tecaboca, the site of the LIFE Camp, has its own long history of Marianist service to young people.

When the late Father V. Albert Mitchel, S.M., was transferred from St. Mary's University to Central Catholic High School in April 1935, he was asked to organize a summer camp for Central Catholic students.

In 1937, 21 students came to the rented campsite at Comfort. They paid \$12 for the first week and \$10 for each succeeding week up to six weeks. The name was changed to Texas Catholic Boys' Camp, and some ingenious Marianists combined the first two letters of each word to create "Tecaboca," which sounded like the name of a fictitious Indian tribe.

Father Mitchel and six brothers were the first staff: the late Brothers Eugene Gittinger, Bernard Marks, Charles Rahe, Eugene Sohm and the living Brothers Thomas Henderson and Leo Scholz. The program included daily Mass, inspection, crafts, swimming, siesta, water sports, camp fire, treasure hunts and, of course, three square meals.

After 14 years, a better site was located on the Guadalupe River, and Tecaboca moved to its present location at Mountain Home.

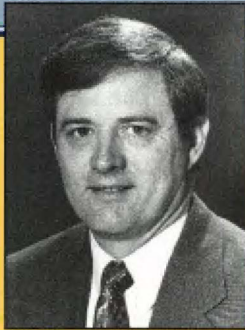
Still going strong, 97-acre Tecaboca accommodates 150 boys age 8 to 14 in two-week summer sessions for recreation, prayer and character-building. Cost is \$340 per session with a \$25 discount for those registering before April 15.

Other groups from Catholic parishes and schools and even family gatherings may use the camp. Tecaboca is currently under consideration for refurbishing and expanded activities by a 15-member board of ministry that includes Marianist religious, St. Mary's alums and interested volunteers. ■

Thoughts from the Past President

OF THE
ST. MARY'S UNIVERSITY ALUMNI ASSOCIATION

by Pat N. Klasing (B.B.A. '71)



During the past few years I have been fortunate enough to attend many of the admission/alumni receptions that are held in various cities. At each reception I have met with prospective students and their parents. As we talked, the same question would always be asked: "What makes St. Mary's special?" At first, I found it a difficult question to answer. It's not the facilities, even though St. Mary's has built many fine buildings in the last 20 years, because many schools have as good or better facilities. It is not the formal education alone, because other universities provide a good education. It is not the cost, because obviously public schools are less expensive.

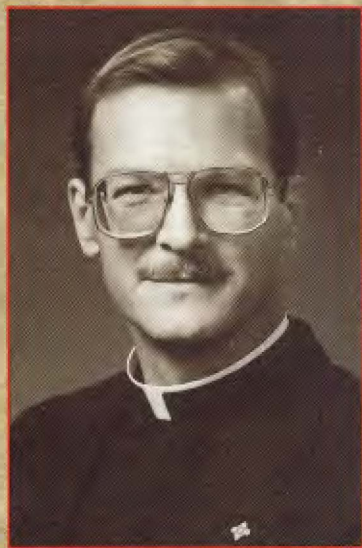
Later I decided what makes St. Mary's special: Most important are the Marianists and their ideas and beliefs. Secondly, faculty and administration genuinely care about every student. Next comes the loyalty of students past and present.

Beginning with the first day in 1852, the Marianists' goal has been not only to educate but also to motivate each student who enters St. Mary's. Marianists want students to understand the importance of ethics and virtue in their everyday lives and teach these same beliefs.

As the number of Marianists have declined through the years, St. Mary's has been blessed with a lay staff ready to live and teach these same beliefs. They have been willing to set an example by sacrificing their time for their students. Such holistic education from the Marianists and lay staff has created a special group of students, past and present, who have come together as a family—a family that cares not only about one another, but also about making the world around them better.

As alumni, we can be proud of our school and of ourselves. When we're asked what makes St. Mary's special, we can answer without hesitation, the PEOPLE! ■

The 1994-95 President's Annual Report



by the Rev. John Moder, S.M., Ph.D. (B.A. '70)



Major initiatives have been under way in the 1994-95 school year—initiatives whose effects may scarcely be seen yet, but whose long-term impact is very great.

The first of these has been our strategic planning process that over the course of the year has involved literally everyone at the university. Planning today has enhanced importance in all organizations, as we try to continue to meet the needs of a changing world.

ST. MARY'S UNIVERSITY

Strategic Plan

Our planning process began with an analysis of the strengths and weaknesses of St. Mary's and the opportunities and threats in our surrounding world. We identified five key issues that became the focus of work for five university-wide task forces in fall 1994. In February and March of 1995, a coordinating committee put the task forces' final reports into a unified strategic plan, which with eight university-wide goals was presented for discussion and approval at the April meeting of the board of trustees.

The eight goals focus on building on our tradition, fine tuning our educational aims, exploring new instructional approaches and assuring ongoing processes of evaluation and revision.

St. Mary's has a long and rich tradition on which to build. Our tradition, rooted in the Marianist inspiration, brings with it the ultimate aim of forming our students in the likeness of Christ by means of a community environment based on Mary's family at Nazareth.

The Call to Diversity

The tradition has even deeper roots in the Catholic heritage, which, confident in faith, is open to the fullness of truth from whatever direction it comes and in whatever form it takes. It is confidence founded on faith that allows us to cooperate with all people of goodwill in pursuit of truth. Our tradition, then, calls us to a great diversity in our student body, faculty, staff, race, ethnicity, gender, religion, age and geography; a diversity that allows us to work toward a "Chaminadean" community of "union without confusion." Our tradition commits us to the highest quality education, demanding and supportive, concerned for the whole person—mind, spirit and body, including head, heart and hands, in theory and in practice.

Thrust of Technology

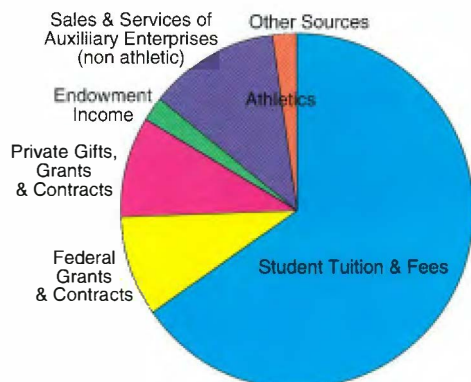
But relying on tradition is not enough in a changing world. We must focus our educational objectives as precisely as we can so we are clear what we want a St. Mary's graduate to know, believe and be able to do. Universities have largely assumed these outcomes over the centuries; today, it seems we must explicate them so we can be more direct in achieving them.

And we must face new opportunities and challenges in the future. Technology has begun to change our world dramatically. Its promise for higher education is immense, and we have only begun to explore its possibilities. In a global society, education must be consciously international and multicultural. In an era of rapid change, critical thinking and commitment to a clear, thought-through set of values are indispensable. All these elements must be appropriately incorporated into our educational tradition if we are to maintain our excellence as an institution.

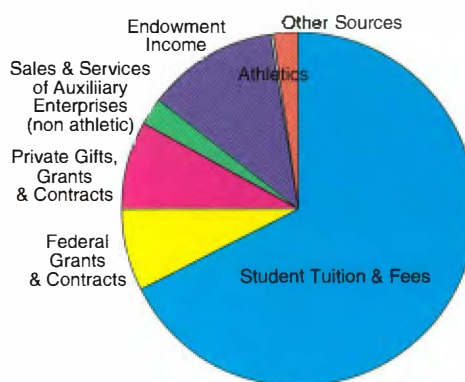
OPERATING INCOME

| | 1994 | 1995 | % of income |
|---|-------------------|-------------------|---------------|
| Student tuition & fees | \$32,709,157 | 35,946,932 | 67.6% |
| Federal grants & contracts | 4,666,609 | 3,987,009 | 7.5% |
| Local grants & contracts | | | 0.0% |
| Private gifts, grants & contracts | 4,548,150 | 4,357,888 | 8.2% |
| Endowment income | 1,148,783 | 1,240,205 | 2.3% |
| Sales & services of auxiliary enterprises (nonathletic) | 5,947,395 | 6,416,918 | 12.1% |
| Athletics | 36,238 | 97,875 | 0.2% |
| Other sources | 991,807 | 1,118,383 | 2.1% |
| Total operating income | 50,048,139 | 53,165,210 | 100.0% |

1994 Operating Income



1995 Operating Income



Ongoing Processes

None of these goals is realistically achievable without the context of a "learning organization"—that is, an organization that has a series of processes in place to reflect and evaluate, plan and revise, make decisions and allocate resources in light of the best information available. Consequently, the final goals of our plan call us to revisit and improve these ongoing processes.

The results of this work will not be immediately apparent beyond a renewed enthusiasm as we look to the future (and conduct extra meetings that will make demands on everyone's time). But the long-range implications involve charting a course that will take us into the next century. The challenges of continuing the dialogue between the Gospels and contemporary culture, of taking advantage of the manifold opportunities of educational technology, of assuring both affordability and fiscal stability in tight times are some of the challenges that demand our response. How we choose to respond will determine the shape of a St. Mary's education for generations to come.

Faculty Progress

A second great effort in the past year has been revision of the Faculty Handbook under the direction of the vice president of academic affairs, Dr. Charles Cotrell, and a faculty team. While policy handbooks are generally unexciting reading, this revision marks another stage in our development as a university. St. Mary's has always been committed to quality teaching, and has always aimed at being a "teaching university" in the best sense. Our long tradition of faculty scholarship has been represented over the years by the likes of Brothers Louis Schuster and Joseph Schmitz. The priority of the classroom and scholarship has never been in question. Without lowering in the least the priority of teaching, the new Faculty Handbook gives renewed emphasis to scholarship in all its forms.

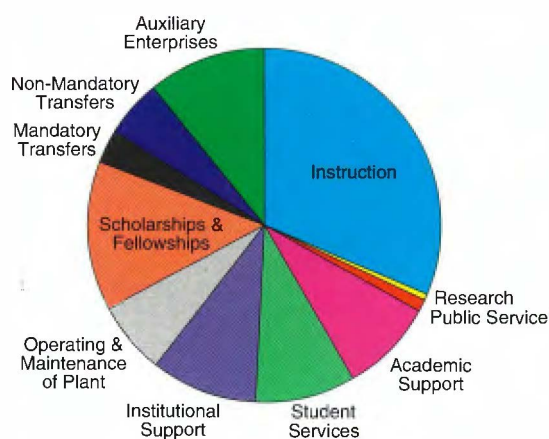
Scholarship and Mission

We have no desire to attempt to become a research university with the attendant problems of a "publish or perish" syndrome and abdication of teaching responsibilities to assistants and junior faculty. But we recognize the cross-fertilization that takes place when faculty are actively engaged in both teaching and scholarship that enrich each other. Taking a cue from Ernest Boyer's book, "Scholarship Reconsidered," St. Mary's new Faculty Handbook describes four kinds of scholarship to be valued and encouraged: the scholarship of teaching, the scholarship of discovery, the scholarship of integration and the scholarship of application. These categories reflect the kinds of scholarship most appropriate to our mission: the primacy of teaching, the importance of educating the whole person, the call to service and the adventure of research.

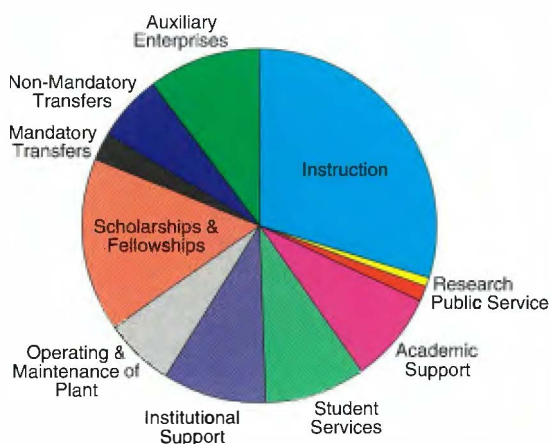
OPERATING EXPENSES

| | 1994 | 1995 | % of expenses |
|--|-------------------|-------------------|---------------|
| Instruction | \$15,335,205 | 15,957,883 | 30.0% |
| Research | 278,908 | 304,890 | 0.6% |
| Public service | 549,405 | 818,969 | 1.5% |
| Academic support | 4,242,870 | 4,451,352 | 8.4% |
| Student services | 4,481,160 | 4,880,332 | 9.2% |
| Institutional support | 4,792,715 | 5,015,876 | 9.4% |
| Operating & maintenance of plant | 3,194,841 | 3,387,779 | 6.4% |
| Scholarships & fellowships | 6,665,123 | 8,386,164 | 15.8% |
| Mandatory transfers | 1,506,411 | 1,406,105 | 2.6% |
| Non-Mandatory transfers | 2,586,321 | 3,272,734 | 6.2% |
| Auxiliary enterprises | 5,184,703 | 5,322,531 | 10.0% |
| Total operating expenses | 48,817,662 | 53,204,615 | 100.0% |
| Increase in revenue over expenses | 1,230,477 | (39,405) | |

1994 Operating Expenses



1995 Operating Expenses



Tenure and a Changing Faculty

Complementary to this renewed emphasis on the scholarly life of a teacher is a new approach to the tenure process. St. Mary's came out of the tradition of the Marianist brothers and priests who served here on assignment by the provincial authorities. In the old days, when most of the faculty were vowed Marianists, tenure was never an issue. As more and more lay teachers joined the faculty, policies for tenure and the protection of academic freedom were developed. One of the features of the new Faculty Handbook is a revision of the tenure process that puts renewed emphasis on the professionalism of our faculty and makes tenure a much more significant step in their incorporation into permanent membership in the St. Mary's academic community.

Typical of St. Mary's habit of collaboration, the draft handbook was presented to the faculty for discussion and revision in a series of meetings. A clear majority supported the changes—testifying to the quality faculty added over the past decade to an already well-qualified group, and their intention to hold themselves to even higher standards. Needless to say, these developments bode very well for the future of the educational enterprise at St. Mary's.

Athletics Convocation Center

A third initiative this year has been a feasibility study for a capital campaign for a new Athletics Convocation Center. Alumni Gym, begun in 1928, had only its shell completed when the Great Depression put a halt to construction. During the 1930s the dirt floor and roof served as a home to circuses wintering in San Antonio! The building was finished just before World War II. Now, the more than 60-year-old building is no longer adequate for an enrollment of 4,200, including 1,200 resident students. We now have both men's and women's varsity sports, both men's and women's national championships, and men and women involved in intramurals.

The new building will accommodate not only sports and a health and fitness center for the entire campus and alumni, it will also serve a variety of purposes. The constant use of the new University Center, including the Lin Great Speakers Series that draws hundreds of people, has demonstrated the need for larger public space for convocations, conferences, public events and so forth.

Fund-raising Effort

The feasibility study resulted in a favorable report, which was endorsed by the board of trustees. So in the summer and fall of 1995, planning and preparation began for the fund-raising effort. It doubtless will be some time before we are ready to enter the public phase of a campaign, but we have begun to get the ball rolling.

Sports Activities

In this connection I might note the success of our athletic teams this past year: Men's and women's basketball, women's volleyball, men's baseball and two women tennis players all reached NAIA national tournaments.

The other item of athletic news is St. Mary's application for membership in NCAA Division II. The question of athletic association affiliation has been a topic for the Heart of Texas Conference for some time, and along with the other schools in the conference, our application was accepted this summer. We now have three years of probation to conform to NCAA rules and make a final decision. During this time we are not eligible for NCAA tournament play, but will continue to be eligible for NAIA tournaments. This move also seems to reflect our taking ourselves more seriously as an institution and developing a new level of competition. As always, our strong scholar-athlete tradition will remain a priority.

So we move ahead, not only looking to the future which our graduates help to build, but also to the future of the university. We must prepare now for the next generation of students. We have rich traditions on which to build our future: a vital Marianist tradition; a commitment to quality education for the whole person, student success, and service to the people of our region, and through them, the world. The future of St. Mary's University, grounded in those traditions, looks very bright indeed. ■

ST. MARY'S UNIVERSITY



The St. Mary's University Honor Roll of Donors

June 1, 1994, to May 31, 1995

*On behalf of our students, the president
and board of trustees, thank you for your generosity.*

The 1852 Society,

established in 1993, recognizes those individuals who have made the university a beneficiary through a will, a charitable trust, a gift annuity or a life insurance policy. The Society of Mary founded St. Mary's College in 1852.

Mary Dorothy Barr
Nicholas Barrón
J. Michael Belz
Ernest L. and Betty
Bodden
Clifton J. and Rosalie R.
Bolner
*Faye M. Bracey
Anonymous
John R. Courtney
Robert C. Cowan Jr.
Mary E. Davis
Robert G. Davis
Harry Deathe
Charles E. Franzke
*R. Bruce Gould, Ph.D.
and Sharry Crofford
Gould
*Larry G. Hufford,
Ph.D.
Thomas M. Hughes
Constance J. Jones
John S. Kusenberger
*Rebeckah McCoy
Joe J. Medina
C. Gay Meyer
*Richard S. Pressman,
Ph.D.
John J. Range
Everett A. Riz
Ann M. Robles
Charles Roedig
Floyd M. Roland
Robert E. Seng
Leonard E. and Shirley
Sterling
Norman C. Thomas
Anonymous
Anne Winter Troupis
Leslie W. and Helen
Tschoepe

* Denotes St. Mary's University employee
+Denotes gifts-in-kind

The Chaminade Society,

named for William Joseph Chaminade, founder of the Society of Mary, honors those alumni, parents, corporations, foundations and friends whose gifts were \$5,000 or more.

Dr. Albert B. Alkek
George W. Brackenridge
Foundation
Campus Ministry
Charity Agency
Canales and Simonson
P.C./J.A. "Tony"
Canales
Catholic Life
Insurance/J. Michael
Belz
Coca-Cola Bottling Co.
of the Southwest
David M. Crowley
Beatrice T. Dante
John W. Dewey
The Douglass
Foundation
The Camille and Henry
Dreyfus Foundation
Inc.
+Fiesta Flambeau Parade
Assn.
+Flying Circle Bags
Frost National Bank
Mr. and Mrs. Miguel
Gaona
Family and Friends of
Shannon Thurmond
Giltner
The Ewing Halsell
Foundation
Tom Mike Hopkins
Houston Endowment
Inc.
Joseph G. Hutter
International Bank of
Commerce-Laredo
Emil C.E. Jurica
Endowment Trust
Phyllis S.L. King

John S. Kusenberger
Estate of Mary G. Lemke
Marine Insurance
Seminars Inc.
Matthews and
Branscomb
Mr. and Mrs. Dennis W.
McCarthy
Mrs. Charles H. Miller
NationsBank
RayCo Inc.
Frank K. Ribelin
Sam J. Riklin

+Southwest
Independent School
District
Alfred J. Stein Jr.
Tandy Corp.
Tesoro Del Alamo
Preservation Society
Inc.
Texas Equal Access to
Justice Foundation
Texas Independent
College Fund
Roberta Tiner



Ann M. Robles
Jack Roth
Sage Foundation
St. Mary's University
Alumni Assn.
San Antonio Bar Assn.
San Antonio Bar
Foundation
Society of Mary,
Community of St.
Mary's University
Society of Mary,
Province of St. Louis
+Sony USA Foundation
Inc.

USAA Federal Savings
Bank/Jack Antonini
USAA Real Estate
Co./Edward B. Kelley
+University of Texas
Health Science Center
at San Antonio
Valero Energy Corp.
Alicia L. de Viyao
James D. Young

The Adele Society,

named for Mademoiselle Adele de Trenquelleon, founder of a religious congregation for women known as the Daughters of Mary, includes those alumni, parents, corporations, foundations and friends donating gifts of \$2,500 to \$4,999.

Rafael and *Barbara
Bader Aldave
Celia Berwin Memorial
Foundation
Capitol Aggregates
Inc./Robert Engberg
Solomon Casseb Jr.
Gregory W. Crane
La Quinta Inns Inc.
Vincent L. Lin, Ph.D.
and Mrs. Cherry Lin
Marianists Of Ohio Inc.-
S.A.
Joseph F. Mijsud
Mission Party Ice Inc.
+Pear Apple County
Fair
Robert W. and Ellen S.
Quillin Foundation
Robert S. Rosow
Joseph U. Rowley Trust
William Carl Schell
Leon L. Sciba
Joseph S. Sexton
Tony I. Soo
*Geraldine Telepak,
D.Min.
+Texace Corp.
Texas Adventure Inc.
Michael G. Tsao
UPS Foundation
Robert E. Valdez
Luis R. Vera Jr.
+Wittigs Office
Interiors/Mark Wittig
San Antonio Bar Assn.
Auxiliary

The St. Mary's University Honor Roll of Donors

The President's Society,

named in honor of the president of St. Mary's University, recognizes alumni, parents, corporations, foundations and friends donating gifts of \$1,000 to \$2,499.

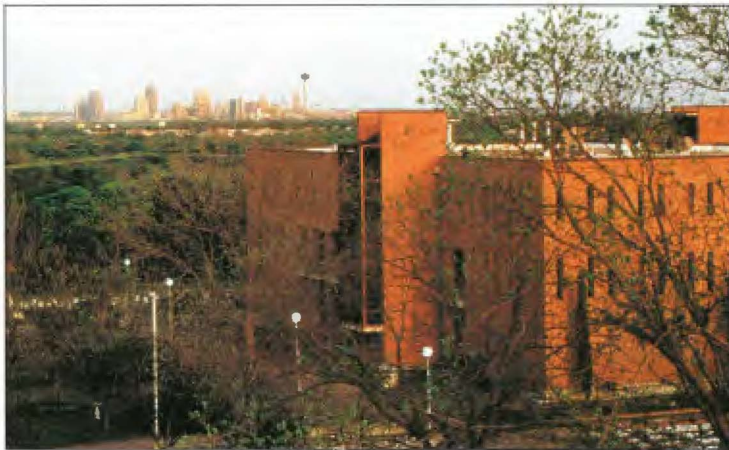
+Baptist Children's Home
*Robert R. Barton
Beirne, Maynard and Parsons/Martin D. Beirne
Bexar County Women's Bar Foundation
Benjamin F. Biaggini
David W. Biegler
Ernest L. and Betty Bodden

Inc./Robert A. Corbo
John A. Cowan
Sid W. Cowan Jr.
Joe G. Cumpian
Donald W. Daut, M.D.
+Dispute Resolution Center
S.H. Dryden, M.D., and Mrs. Evelyn Dryden
Stephen M. Dufilho
Charles E. Ebrom
Robert Engberg
Ruben M. Escobedo
Farmers Insurance Group
Farmco Inc.
Federal Bar Association-S.A. Chapter
+Stephen G. Filtsch
The Ford Foundation
Mr. and Mrs. Charles E. Franzke
William E. Greehey
Albert T. Gros, M.D.

Leonard E. Lawrence, M.D.
The Pat and Dorothy Legan Charitable Trust
Timothy G. Lenahan
*Aloysius A. Leopold
Le Chiao Lin
Luby's Cafeterias Inc.
*Sister Grace Luther, F.M.I.
Chris Maguire
Charles K. Matocha Sr.
Marmon Mok/Steve Huck
Tom McMahon
C. Gay Meyer
*Rev. Charles H. Miller, S.M.
Sister Mary K. Milne, O.S.U.
Estate of Pola Negri
Lawrence E. Noll
+Northside Independent School District

+Sea World of Texas Inc.
Robert E. Sefcik
Robert E. Seng Jr.
Silber and Assoc. Consulting Engineers Inc./Paul G. Silber
Norman and Alicia Singleton
Society of CPCU-Alamo Chapter
James H. Sorenson Jr.
Frank R. Southers
Southwest Gem & Mineral Society Inc.
Marshall T. Steves Foundation
Iris Stewart
Strafco Inc.
Harry and Loretta Strharsky
Louis H. and Mary Patricia Stumberg Foundation
Sun Harvest Farms Inc./Nelson Wolff
Lee Taft
Norman C. Thomas
Cruz M. Tijerina
Charles A. Toudouze Sr.
Anne Winter Troupis
Jack S. Tsao
USAA
Union Pacific Foundation
Patrick G. Veltman
Joseph C. Wailes
Right Rev. Alexander C. Wangler
*Daniel J. White
James E. Windlinger
J.L. Windlinger
World Oilman's Tennis Tournament Corp.
James H. Wright Jr., M.D., and Mrs. Donna A. Wright
Hansell N. York III

Blassingame & Osburn/Robert H. Osburn
James Bucek
Roger G. Burton
Chemic Inc.
Cosgrove-Meurer Productions Inc./Oberman, Tivoli and Miller Ltd.
*Charles L. Cottrell, Ph.D.
Mary Anne and Tony Crosby Jr.
Roberta Durham
*Paul F. Ferguson
*Richard E. Flint
Santos Fraga Jr.
*Elise D. Garcia
Martin Goland
James J. Gordon
Kitty Gray
H.E. Butt Grocery Co.
Halo Distributing Co.
Emory A. Hamilton
G. Hasslochler
C.H. Hinton
Household International
John F. Hunt
+Industrial Communications
+KENS-TV
*Candace J. Kuebker
Stephen Kuzmich
Barbara C. Kyse
*Rev. John G. Leies, S.M.
Horace T. Masterson
G. Daniel Mena
Brian A. Mitchell
Frederic W. Morton Jr.
James J. Nawrocki
Al J. Notzon III
Wilton L. Pate
Steven M. Porter
+Ruby's Creative Photo Lab
San Antonio CPA CE Foundation
+San Antonio Sports
Very Rev. Lawrence Stuebben
Texas Chapter PRIMA
Venus Oil Co.
Mark D. Wagner
Bernice A. Walcher
Aubrey and Dixie C. Wilson
Robert John Wilson



R.J. "Bob" Boerner
Broadway National Bank/Gregory W. Crane
H.F. Brown Jr.
Frank B. and *Laura H. Burney
C.P.C.U. - Harry J. Loman Foundation
*Ruben A. Candia, Ph.D., and Herlinda Candia
Estate of Antoinette Carnesi
Paul E. Casseb
Audreyjane Castro
Thomas P. Cerneka
Chaminade Community House
Chemical Bank
Mr. and Mrs. Joseph Ching
Anthony J. Chivetta
City of San Antonio
Club Sembradores de Amistad
William H. Combs III
John R. Conrad, Ph.D.
Corbo Electric Co.

Henry Guerra
Charles E. Harrell
James S. Harrington
Health Law Section-State Bar of Texas
*Mr. and Mrs. Thomas L. Heaton
Joseph P. Hebert
William H. Holt, Ph.D.
*Mr. and Mrs. Robert C. Howe
D. Michael Hunter
*Charles W. Jenkins
Kurth Jones & Treat P.C./David V. Jones
Gregory N. Jones
*Amy H. Kastely
*Anthony Kaufmann, Ph.D.
Don and Patsy Knowlan
James and Rita Koett
John F. Kramer
William A. Kuebker, M.D., and Mrs. Joan E. Kuebker
James C. Laflin
Steven C. Laird
B. Mills Latham

Joseph A. O'Neill, M.D.
Olmos Environmental Services Inc.
Orthopedic Surgery Assoc. of San Antonio
Philip G. Otto
William E. Owen
+PacifiCare of Texas Inc.
Park E. Pearson
John M. Phelan
Daniel Pozza
*Richard S. Pressman, Ph.D.
Ram Stores Inc.
Louis J. Richter
Judge Raul Rivera
William H. Sadlier Inc.
St. Mary's University Athletic Assn.
San Antonio Coors Distributors
San Antonio Express-News
+San Antonio Independent School District Transportation
J. Robert Scott

The Gold Circle, named for the gold in our school colors, comprises alumni, parents, corporations, foundations and friends donating gifts of \$500 to \$999.

ARA Campus Dining Services
Gilberto Aguirre
Anonymous
Baron's Express Inc./Robert J. Mahacek
Nicholas Barrón
Frank A. Bennack Jr.
Ray E. Berend
Mark M. Bielstein

The St. Mary's University Honor Roll of Donors

The Blue Circle,

named for the blue in our school colors, includes alumni, parents, corporations, foundations and friends contributing from \$250 to \$499.

*Barry E. Abrams, Ed.D.
Bank of San Antonio/
Stephen M. Dufilho
Jan M. Freeborn Barron
Beldon Roofing and
Remodeling
Bird & Noll
Jerry Boerner
Celia Trimble Boone
Edward R. Boyle
Burke & Associates/
David W. Burke
*Caroline A. Byrd
Timothy E. Casey
*Mark W. Cochran
Anne Cofer McKellar
D.B. Cofer Jr.
Kenneth L. Crowell
Davis, Adami and
Cedillo Inc.
Janice L. Davis
J.A. DeGasperi, M.D.
*Janet B. Dizinno, Ph.D.
Charlie J. Doerr III
David Emge
C.H. Etlinger
Laura A. Feldman
Remy J. Ferrario
Gerry Flores
Fulbright & Jaworski
Patrick D. Furlong
GLI Distributing
Carlos A. Garcia
Roger Gwilt Gastrell
Edward F. Gentempo
Melynda Giesenschlag
Kevin J. Gilhooly
Thomas R. Giltner
Gene Gittinger
Government Personnel
Mutual Life Ins. Co.
Daniel J. Grahmann
Rosalee Rice Grahmann
Don J. Gudinas
De Gene M. Haderer
Joachim J. Huerter
Elton M. Hyder III
Jeffers, Brook, Kreager
and Gragg Inc.
Kopplow Construction
Co. Inc.
*David R. Krause
Juan Longoria III
Lubbock County Bar
Assn.
Bernice K. Luna
Law Offices of Maloney
and Maloney
*Rebeckah J. McCoy
Joe Mendiola Jr., M.D.
Methodist Healthcare
System

+Mexican American
Unity Council
Warren F. Michener Jr.
Dr. and Mrs. Pruett
Moore Jr.
Joseph Michael Ojile,
M.D.
Sixtus J. Pawlik
Plunkett, Gibson &
Allen Inc.
Kay L. Reamey
+St. Peter-St. Joseph
Children's Home
+San Antonio Council
on Drug Abuse
William Scanlan Jr.
U.A. Schulz
R. Lewis Scott, O.D.
Larry Stuesser
+Texas Agriculture
Extension Program
*Jerry D. Todd, Ph.D.
Terry Topham
Juan A. Torres
*Brian Toyne, Ph.D.
Les and Helen Tschoepe
Laura J. Urbis
Christopher D. Warren
Tom Wells
W.E. Simpson Co. Inc.
*Karyn S. Williams
Leslie H. Williams

The Century Club

is one of the oldest university giving clubs, originally named to honor those who made gifts of \$100. Today, its members include alumni, parents, corporations, foundations and friends donating gifts of \$100 to \$249.

A Plus Services
Unlimited
A.J. Monier
ARAMark Uniform
Services
+John Abdo
Richard R. Aboia
Justin I. Abraria
Ernest Acevedo Jr.
Norman J. Acker
Harlan Adamcik
Herman A. Ahr
Cecilia Akers
*Elijah F. Akhahenda,
Ph.D.
Patricia L. Albee
Roger L. Albee
Allen & Allen Co.
Elmer C. Alsmeyer
+Nancy Amodei
Charles Arambula
+Artistic Wood
Impressions
Robert H. Austin
Antonio D. Avila



Louise C. Aydam
Jeffery A. Babcock
*Robert B. Babcock,
Ph.D.
Maj. Mark R. Bagg
Pamela J. Baker
Robert A. Ballard
+Bally's President's
Fitness Club
Robert Bambace
Philip C. Banks
James E. Barlow
Lynn D. Barnett
The F.A. Bartlett Tree
Expert Co.
Homer L. Barton Jr.
James E. Barylski
*Lonnie Beene
Maureen E. Benschoter
Leonard Bentsch, M.D.,
and *Sue T. Bentsch
Arlie A. Benton Jr.
*Roger L. Bentson
John Bernal
*Gerry W. Beyer
Robert A. Biasioli
Jack Biegler
Lawrence J. Bielick
Paul Bieber
Robert E. Bingham
Ward T. Blacklock Jr.
R.J. Bloomfield
+Annette Blythe
Franklin L. Bohl
O.C. Bosbyshell
Howard Bowie
Dan E. Bowman
Michael V. Boyle
Heartland Sales/Dick
Boyles
Edmond L. Bradshaw
Michael J. Brady
*Mary C. Braley
Tom Brieske
John D. Brinkman
Lewis W. Britton III,
M.D.
Maj. Richard N. Brogan
(Ret.)

Catherine E. Brophy
Louis Brown
Phil W. Brown Jr.
S.J. Buchanan
+Builder's Square Inc.
Delia Bullock
Morris Bundick
Lt. Col. Homer H.
Burkett (Ret.)
Hansel E. Burley
William B. Burnett
Jon G. Burt
Louis A. Bustamante
David G. Cadena Jr.
*Jack Calentine, Ph.D.
Cameron Brooks Inc.
Col. James M. Campbell
(Ret.)
John and *Joan S. Canty
Daniel E. Cardenas
Scott S. Carnal
Loretta Carrillo
Claiborne Carrington
Gale O. Castillo
Frank J. Cavico
Elmo M. Cavin Jr.
Todd A. Cebriak
+Ricardo G. Cedillo
Annette D. Celerier
Kent T. Cerneka
Frank L. Cernosek
Chuan Chao
*Jose M. Cimadevilla,
Ph.D.
JoMarie Clark
A.D. Clemens
James A. Clements
Richard F. Coerver IV
David G. Colby
Laura R. Cole
Cornelius J. Collins
Gen. H.E. Tom Collins
Carolyn F. Condos
Henry Conklin Jr.
Kevin G. Connelly
Carolyn E. Cook
James H. Coots
Corbey Co.
*Angelina M. Cortez

Peggy P. Cowan
Eva Howell Cox
+Jean L. Craig
Gene L. Cross
Patricia D. Cruz
Vann Culp
Jeffrey J. Czar
Charles A. Davidson
Philip S. Day
Ernest M. DeWinne Jr.
Richard C. Dean
Gene Debullet Jr.
*Alejandro S. Delgadillo
*Nora Demleitner
K. Mark Deubner
Douglas J. Dever
*David A. Dittfurth
Myron J. Dmochowski
Docucon
Frank W. Doerfler
John K. Dooley
Tom Dougherty
James E. Dowdy
William L. Dowdy
Jacinta I. Downing
Walter E. Drone
Evelyn Dryden
E.B. Duarte Jr.
*Jon C. Dubin
Maribeth Durst
Walter D. Duvall
Leonard J. Dyke
Larry M. Dylla Jr.
+East Central
Independent School
District
Myron E. East Jr.
+Dr. David Edwards
Thomas H. Egolf
Robert B. Ekellund Jr.
Lance F. Elliott
Douglas B. Endsley
Ray J. Esparza
Donna Espey
+"Nacho" Estrada
James J. Everett
Arthur R. Faison
Armando Falcon Jr.
Giovanni G. Fazio,
Ph.D.
James R. Fendley Jr.
*Homer D. Fetzer, Ph.D.
David W. Finger
Sylvia Borunda Firth
*Melba D. Fisher
Ronald R. Flake
George R. Fleming
William E. Fleming
Lawrence J. Flume Jr.
Mark S. Flusche
Vincent Fontana Jr.
Ray W. Freeman Jr.
Friedrich Medical
Center/Eric W.
Friedrich, M.D.
Vernon C. Friesenhahn
Richard Fritz
Garbage Gobbler
Hector H. Garcia
Jose G. Garcia
Margarito L. Garcia Jr.
Mercedes Garcia

The St. Mary's University Honor Roll of Donors

Michael D. Garcia, M.D.
Garufi & Garufi/
Carman M. Garufi
Jose D. Garza
Johnny F. Gavlick
The P.D. George Co./
Richard J. George
Michael A. Glauber
Lawrence A. Goebel
Sr.
Col. Frederick J.
Goebeler Jr.
Marie Goforth
Golden Banner Press
Inc.
Stephen L. Golden
Friends of Charles A.
Gonzalez
*Hector Gonzalez
+Dr. Ed Gooze
William R. Green
Royce T. Groff
Anthony L. Grossi
Mark S. Grothues
Thomas J. Grothues
+Guadalupe Lumber Co.
Kurt A. Guerdrum
Lt. Col. Urban A.
Gutting (Ret.)
Alberto Guzman
Manuel T. Guzman
Carol R. Haberman
James R. Hale
*Gloria E. Hanna
Mary T. Hanna
Sid L. Harle
+*Sgt. Thomas Harrison
*Mary E. Harston, Ph.D.
Harte-Hanks
Communications Inc.
*Emily Fowler Hartigan,
Ph.D.
Michael Hartmann
Hartzheim & Co./James
P. Hartzheim
Alfred B. Hawkins
Robert D. Haynes
David B. Hensley
Col. A.L. Henson (Ret.)
George H. Herbst
Jose Amaro Hernandez,
Ph.D.
Rodolfo Hernandez
Hester, McGlasson &
Cox/Charles A. Hester
Jr.
Andrew E. Hill
Thomas R. Hingst
Robert B. Hirschhorn
Mat Hitzfelder
Patrick E. Howard
Margaret M. Hudson
Richard L. Huff
Gabriel W.K. Hui
+Dr. Rick Ibarra
JPK Management Co./J.
Patrick Kaine
+Dr. Claire Jacobs
Weldon M. Jacobs
Richard C. Jaworski
Glenn J. Jennewein

The John Newman
Family Charitable
Trust
*Karen A. Johnson
Rhonda Jolley
Shelby A. Jordan
Tom Joseph P.C.
Charles J. Jurek
+KMOL-TV
KPMG Peat Marwick
Mary F. Kalinec
H. Karp Co.
*James L. Kastely
*George P. Kazen
*Naghi Kebriaei-Tabari
Daniel S. Keller
Ernest L. and Virginia
Haegelin Kerr III
Leonard A. Keyes
+Kinko's National A/R
+Frederick Kirksey
Mr. and Mrs. A.J.
Kissling III
Charles B. Kitowski
Patrick N. Klasing
Richard H. Klitch Jr.
David C. Kocurek
Peter M. Koelling
Johnny R. Kolenda
Marylee Mueller Kott,
M.D.
+Dr. Yvonne Kratz
Gus J. Kroschewsky
Robert A. Kubena
Craig W. Kuebker, M.D.
Joe G. Kupcho
David J. Kvapil
Landrum, Haegelin and
Associates Inc./Jack R.
Landrum
*Margaret Langford,
Ph.D.
Michael J. Larocca
Jeff R. Latimer, M.D.
Law Book Co. of Texas
Inc./Katy Lee
J.T. Ledford
Gary Legan
Properties/Gary Legan
Paul Leitzinger
Louis H. Lenzer
A.J. Lewis Jr.
Steve Lewis
Lexis-Nexis
John R. Libby
LifeRe Insurance Co.
Beverly Lindsay
+Little People Puppet
Co.
Stanley P. Lopat, M.D.
+Dr. Anne Thomas
Lopez
David Lopez
Virginia Lopez
Terry M. Lurtz
Charles W. Lutter Jr.
John C. Lyon
Laurence J. Lyons
Martha I. Macartney
Frank J. Macchiarola
John C. Maguire IV
+Roderick Mahurin

Ivan A. Mangold
Paul E. Manna
Cynthia Kent
Maragoudakis
Carlos E. Martinez
Raymond S. Martinez
*Zaida L. Martinez,
Ph.D.
Oscar C. Mascorro
Leslie D. Maurer Jr.
Syl Mauro
Ralph M. Mayen Jr.
Paul R. Mayo Jr.
Mirda-McAvoy/Robert
M. McAvoy Sr.
P.D. McCarthy
+Warren McKinney
Elizabeth Preston
McMillin
Col. and Mrs. Earl
McSwain Jr.
Miguel A. Medina,
Ph.D.

Truman H. Neal
Mrs. Robert L. Nelson
James F. Neumann,
M.D.
Alton S. Newell
+Dr. Richard Newman
Jane Williams Newton
Joseph M. Nixon
Robert J. Noll
Alvin Nored
Rodney Novosad
M. Margaret O'Brien
Chris E. O'Connor Jr.
Michael G. Oddo
Gary W. Offer
Rees R. Oliver Jr.
Robert R. Ottis
Steve Oulvey
Padgett Stratemann and
Co., L.L.P.
Burni M. Paine
Thomas Pajda
Francis E. Palma

William W. Riebe
Eduardo A. Rodriguez
Barbara E. Rosenberg
James V. Rossi
Robert P. Roy
T. Richard Ruff
Norman J. Ruiz
Elaine K. Ryan
Gene Ed Ryder, Ph.D.
Edward S. Saconas
+St. Mary's University
Bookstore
+San Antonio Police
Department-
Downtown
San Antonio Press Inc.
Gilbert A. Sanchez
Sebastian Sanchez
+Vicki Sanders
Sharon A. Sartori
*James B. Sauer, Ph.D.
Richard A. Sauget
Jerry Saxe



Peter Meehan
Julie A. Mellin
Dr. and Mrs. A.T.
Mendicino Jr.
Alicia Mendoza
+Mental Health Assn.
William D. Meskill
Anthony B. Meurer
James A. Meurer
C.U. Miller
Donald B. Miller
James A. Miller
Jules C. Monier, M.D.
Montgomery Elevator
Co.
Maria Elena Morales
Arthur T. Moreno
Bruce M. Mort
Paul J. Moschner
Denise Watson
Mountjoy
Thomas E. Mueller,
M.D.
James E. Mulligan
Dora E. Munoz
J. Leo Munoz
Marvin and Karen
Murray
Kenneth Narendorf
Max Navarro

Panepinto & Panepinto/
Thomas N. Panepinto
Arthur J. Panfeld
John R. Paxson
Homer J. Penn
Rev. David C. Penticuff
Louis J. Peralta
David H. Perlstein
Lt. Col. A.D. Pickard II
(Ret.)
Pitluk and Assoc. Inc./
Louis H. Pitluk
John Edward Powell
Dan V. Pozza
Carol and Curtis Pratho
*Gerald B. Pratt, Ed.D.
Pat Priest
Arlene S. Quenon
John P. Quinn
Anthony T. Ramirez
Catherine C. Ramirez
Arthur G. Randol Jr.
Ins. Agency
Roger D. Reader
Hamilton H. Redmon
Blair Reeves
Michael F. Reimherr
David R. Reiner
*Bahman Rezaie, Ph.D.
Lloyd L. Rich

Roger H. Scheffel
Robert C. Scheibel
John Schilling
Michael G. Schlafly
Frances C. Schmitz
M.A. Schoech
Joseph F. Schreiber Jr.
Mary P. Schroeder
Stanley G. Schroeder
*Rissa A. Schultz
Gordon E. Schutze
Bob Schwall
Dennis R. Scotka
*Gary J. Scott, Ph.D.
Security National Bank
of San Antonio
Owen R. Seidenberger
Col. and Mrs. Benjamin
F. Sharp Jr. (Ret.)
Henry S. Shaw
+Dr. Jim Sherman
+Sherwin-Williams
James D. Shields
Doris E. Sifling
*S. Eugene Sims, Ph.D.
Doris A. Slay-Barber
Mildred F. Smalley
H. Davidson Smith III
Software First Inc./Leroy
J. Zurovec

The St. Mary's University Honor Roll of Donors

Charles R. Solcher
 Clement H. Spalding
 John F. Sprencel
 St. Joseph's Catholic
 Church
 St. Jude Senior High
 Youth Group
 Jerry T. Steed
 Eugene R. Steele
 Felix L. Stehling
 Leonard E. Sterling
 J.B. Stevens
 Lloyd A. Stevens
 Gerard J. Sulaica
 Lt. Col. Ben J.
 Sultenfuss (Ret.)
 Chandelle T. Summer
 Robert J. Sweeney
 Col. Ambrose Szalwinski
 *Nancy Szalwinski
 Louis L. Talbot
 Charles W. Tarrillion
 James Tarrillion
 John E. Tarrillion
 Ralf E. Taupmann, M.D.
 *John Teeter
 Myra R. Tejada
 Willis N. Terry
 James E. Thailing
 Jill Torbert
 William S. Toudouze
 William F. Traeger Jr.
 Michael J. Trask
 William S. Trivette
 Arthur C. Troilo
 William H. Troth
 Lloyd C. Tschirhart
 Tschoepe/Associates;
 Architecture
 William C. Uhland,
 Ph.D.
 Enzo A. Uliana
 United Services
 Advisors Inc.
 Universal Office
 Products
 +VFC Medical Supply
 Co.
 Paul R. Vahldiek Jr.
 Patrick L. Valls, M.D.
 Edward Van Pelt Jr.
 Berend M. Van der Meer
 +Dr. Dawn Velligan
 Lorena Villa
 Rev. Marcus J. Voss
 Rohit K. Vyas
 *Pamela M. Wadsworth
 William A. Warner
 George A. Watts
 George Wead
 Douglas J. Wealty
 Rawley L. Weber
 James E. Wehman
 R.P. Weidhorn
 Marcia S. Weiner
 William M. Weir
 Harold E. Weissler
 Thomas E. Weissler,
 O.D.
 Roger J. Wetz
 John A. "Tony" White
 W. Mike White

Ronald C. Wickwire
 +Lloyd Jean Williams

Marsha Alsmeyer
 Marcus J. Altenburger



Jill Wilson
 John H. Winter, M.D.
 Randolph N. Wisener
 James R. Wolfe
 Laura L. Worsham
 John C. Wright, M.D.
 Lt. Col. Waldo E.
 Ximenes (Ret.)
 Lisa A. Yeh
 *Richard M. Yerly
 Charlie E. Young Jr.
 Pat Yoxall Printers/Pat
 Yoxall
 Mary A. Zaldivar, M.D.
 Edward J. Zinsmeister
 Rudy and Trish
 Zinsmeister

The Rattlers Club,
 named for the St.
 Mary's mascot, includes
 alumni, parents,
 corporations,
 foundations and friends
 making gifts of \$1 to
 \$99.

+AIDS Foundation
 Barbara J. Abbott-
 Dormer
 Arthur Abraham
 Phillip R. Acosta
 Vincente C. Aguero
 *Anna Aguilar
 *Cecilia T. Aguilar
 Nick S. Aguilar
 Rebecca K. Alanis
 Armando Albarran
 Diana Alcocer
 *Mary R. Alfaro
 Rasoul Alizadeh
 M.J. Allaband
 Jack H. Allen
 *Mary E. Almanza

Marjorie Altman
 *Edwin P. Altomare
 Carlos Alvarado Jr.
 Luis Alvarado Jr.
 *Daniel Alvarez
 Rene Amaya
 +American Red Cross
 *Ernest Roy Amo
 Ercelyn R. Anderson
 Larry M. Andrews family
 John W. Angle
 Anonymous
 Dan Anthony
 Marian L. Antila
 Louis U. Antu
 *Rudy Anzaldua
 Hugh M. Arce
 Sharon E. Arciniega
 Dolores R. Arellano
 *Viola D. Arellano
 Gilbert G. Arias
 Elva Arteaga
 John A. Asbury
 Patricia O. Atiee
 Reuben Atkinson
 Joyce L. Attaway
 Daniel A. Augustyniak
 Gabriel R. Ayson
 Rene J. Baeten
 Emily M. Bailey
 Richard Baird CPA
 Baksh Insurance
 Agency/Hanif Baksh
 D.F. Baldeschwiler
 Baldree Insurance
 Agency Co./David K.
 Baldree
 Robert L. Ballinger
 Floyd Balter
 Harrell Banks Sr.
 Melvin D. Barborak
 Ed F. Bareis
 *Mary Anne Barnett
 David W. Barr
 Gilberto L. Barrera

*Alice F. Barrientes
 John C. Barrientes
 Horacio Barrientos
 Jesse P. Barrios
 Benjamin Bartman
 Thomas R. Basinski
 *Richard Bauer Jr.,
 Ph.D.
 Barbara A. Beach
 John D. Beaven
 Morgan M. Beck
 Doyle E. Beilstein
 Mrs. Graciela Escobedo
 Bell
 James E. Bell
 William Benavides
 John L. Bendele
 Benson Automotive
 World
 Barbara A. Bentley
 Maggie C. Bick
 Walter J. Biegler
 Christopher A. Bina
 Lewis F. Birdsong
 Joan Birkmann
 Steven B. Bishop
 Bitsis Enterprises Inc./
 Socrates C. Bitsis
 Beverley Blackmon
 Gerard L. Blais
 Leland T. Blank, Ph.D.
 *Mary Sue Blansett
 Edward J. Blasi
 Ellen Bode
 Lucile Bodenheimer
 Donald W. Boehme
 Brig. Gen. Ed and Linda
 Boenisch
 Harvey M. Boerner
 Galen Bohlen
 Bolner's Inc./Richard A.
 Bolner
 John G. Bomba
 Victor Bonilla III
 Col. W.J. "Bull" Bonner
 Jr.
 Rita J. Bordano
 Frederick H. Borg
 J. Kenneth Bostel
 Francis J. Bowen Jr.
 John Bower
 C.J. Boyle
 Vincent A. Boyle
 John B. Bradshaw
 Lou Bradshaw
 Dee Brady
 Katherine E. Braun
 Elisabeth Bregant
 Edward Bremmer
 Bill and Patti Brennan
 Thomas D. Brent
 Rex A. Brien
 Herbert A. Briesacher
 Paul G. Brinkmann
 *Phoebe Briseno
 William H. Brooks
 Gilbert E. Brosch
 Lelan F. Brotherman
 Charles L. Brown
 David W. Brown
 Lt. Col. Douglas M.
 Brown (Ret.)

Marie Teneyuca Brown
 Nancy A. Brown
 Mrs. Sadie J. Brown
 Teresa J. Brown
 William R. Brown II
 Cecilia Young Bruce
 +Buckner South Texas
 Center
 Clem Bueche
 Michael D. Bugajsky
 Kenneth and Kamari
 Buley
 Lt. Col. Troy D.
 Burchell (Ret.)
 Sandra J. Burgman,
 D.D.S.
 Norma C. Burke
 Mel Bureson
 Katie J. Burrige
 Patricia L. Burrus
 David T. Butsch
 Vashon S. Byrd
 Keith Byrom
 Rosa Maria Cabezas-Gil
 Maj. Oscar Calderon
 *Ann Marie Caldwell,
 Ph.D.
 Martin L. Callahan
 James Callan
 *Stephen Calogero,
 Ph.D.
 Daniel Campos III
 Alan J. Canellis
 Rosalinda Cano
 Craig J. Cantoni
 Rodolfo R. Cantu
 Rosario M. Cantu
 Eddie Cardenas III
 Gabriel R. Cardenas
 Peter Carey
 Gilbert Carrillo
 Louis S. Carrillo
 Michael J. Carrizal
 John T. Carrola
 Michael T. Carter
 Alan T. Cash
 John R. and Dinorah
 Casias
 Pete Casias Jr.
 Dr. and Mrs. Mark M.
 Casillas
 Ben G. Castilleja
 Leopoldo E. Castillo
 Melissa C. Castillo
 Raquel Castillo
 Nancy J. Catalane
 Jayne M. Cawthern
 Ernesto J. Chagoya
 Phyllis Chamberlain
 Susan Chambers
 Champion Business
 Products/John "Jack"
 Juén
 Edward C.S. Chan
 Ralph Chapa
 Mr. Robert Chapa
 Calder W. Chapman
 James M. Charbonnet Jr.
 Gary R. Chernow
 Paul F. Christilles Jr.
 Paul V. Churchman
 *Alan Cirlin, Ph.D.

The St. Mary's University Honor Roll of Donors

Arthur Cisneros
 James J. Clark Jr.
 Kevin L. Clark, O.D.
 Katherine Cochran
 Pete Cockrell
 *Deidra E. Coleman
 Isaac Collier
 +Colonnade Athletic Club
 Monica J. Colvin
 James T. Comiskey
 +Concept Therapy Institute
 Doris E. Conley
 Billy Ray Connolly Jr.
 Contemporary Constructors Inc./
 Michael Novak
 Carlos J. Contreras Jr.
 Thomas D. and Leticia L. Domeras
 Paul J. Cook
 *Dana L. Cooper, Ph.D.
 Barbara L. Cordts
 Pauline Cordova
 Domingo Correa
 Fabian Cortez III
 Robert P. Cotter
 R. Cover
 Marie S. Craig
 *Lydia Cramer-Reyes
 Denise Voigt Crawford
 Ralph A. Crevoisier
 Mary A. Cribbin
 Thomas D. Cribbin
 Mrs. Robert W. Crooks
 Michael M. Crosby
 Mr. and Mrs. Louis Earl Crumrine
 Duane A. Cruz
 Esther G. Cruz
 Anthony Cubriel
 J.P. Cuellar Jr.
 Cynthia E. Cueva
 *Graciella M. Cuevas
 Alfred Curiel
 Herman Curiel
 Roy Curiel
 Geraldine Ann Cusack
 Andrea S. Cutter
 Scott S. D'Amico
 Carl Dailey Sr.
 John A. Daniels
 Molly S. Daniels
 Rev. Albert F. Danter
 Col. Laurence M. Daves
 Donald J. David
 Gaylon O. Davidson Jr.
 Raul Davila Jr.
 Barbara Rozell Davis
 Ray E. Davis
 William J. De Gasperi
 Carlos M. de la Garza
 Charlie C. de la Rosa
 Praxedez C. De La Rosa
 Jamie De Los Santos
 F. Roger De Latte
 Edward L. De Leon
 Joe G. De Luna Jr.
 Maria T. De Luna
 *Pamela S. DeRoche
 Charles G. Deason

Barnie R. Deatley
 Harry A. Deeter
 John L. Delany
 Julia Delgado, M.D.
 Anna M. Deosdade
 John A. DesRochers
 Karen J. Desmond
 Isabel M. Dever
 John Dias
 Donna Koogle Diaz
 *Paul A. Diaz
 William E. Dieterle
 Edward Dimitroff
 Conrad A. Diric
 Harold M. Dixon
 *Gerard A. Dizinno, Ph.D.
 Joyce A. Dobrowolski
 J.C. Dodson
 Mark Dolan
 Ralph E. Domras
 Jesse P. Dominguez
 Monica L. Donahue
 Mrs. L.M. Donohue
 John T. Donohue
 Dennis A. Dooley
 Bernadine E. Dorantes
 Dravis Interest Inc./
 Jeffrey J. Dravis
 +Drug Free Schools
 Gibson M. DuTerroil
 Sandi Duggan
 Mr. and Mrs. Kenneth Dugosh
 Terry J. Dunklin
 Daniel Dupre
 Edgar and Marlena Dupre
 Mary Lee Durham
 Joan T. Dusard
 Margarita Dusek
 Lawrence Dvorak
 David J. Dybell
 Charles M. Eads Jr.
 Joanie Guess Eastwood
 Juan and Belinda B. Echartea
 J.E. Edell
 Ernie Ehlinger
 Melvin N. Eichelbaum
 Ronald C. Eisenbrey
 Timothy B. Eldred
 Estella S. Elizondo
 Joan Ellis
 John S. Ellis Jr.
 *Tara B. Engberg
 Steve Ernst
 Gerard J. Eschmann
 Jeffrey Espinoza
 Lucinda R. Espinoza
 Mary G. Erlinger
 J. Ernest Evans
 Miguel and Debra Falcon
 Heather Ann Farmer
 Larry R. Faust
 Mary D. Felix
 +Bill J. Ferguson
 *Don Ferguson
 Jesse G. Fernandez
 John A. Fernandez
 Elroy H. Fey

Sandra J. Fey
 John A. Fiano
 Donna Eckert Fields
 Larkin W. Fields
 Leo O. Figueroa
 F. Nelson Finch II
 Stephanie L. Fincke
 Robert W. Finertie
 Chris Finger
 Gretchen M. Finger
 Jack L. Finger
 Lt. Col. Michael J. Finger
 William H. Fiock
 James L. Fischer
 Janet R. Fischer
 Hugh J. Fleming III
 Madeline S. Fleming
 Angelique Fletcher
 John J. Flieller
 Margaret and John Flood
 Maj. Gen. Belisario J. Flores (Ret.)



Bennie Flores Jr.
 Elizabeth N. Flores
 Lt. Col. Robert J. Flores
 Steve Flores
 Ricardo Flores-Clar
 +Jim Floyd
 Michael H. Focht Jr.
 William K. Foitik
 Eleanor V. Foley
 +Fort Sam Houston
 Leslie R. Foster
 *Debrah J. Fox
 Michael J. Francese
 Phillip J. Franco
 Catherine K. Franko
 Willie R. Frantzen
 James C. Frazier
 James J. Frese
 Irv Fries
 Mr. and Mr. James M. Fulkerson
 Marcos Fulop
 Donald D. Funk

Dr. John P. Galan
 Joseph J. Gallagher
 Silvino J. Gallardo
 Frank Gallinaro
 *Susan K. Galloway, Ph.D.
 Catherine Galvan-Meaney
 Monsignor Rowland E. Gannon
 James J. Gansle
 Andrew R. Gantenbein
 Abel Garcia
 Eloisa Garcia
 Ernesto M. Garcia
 Fausto Garcia
 Garcia Apartments/Jesus V. Garcia Jr.
 John V. Garcia
 Joseph P. Garcia CPA
 Lt. Col. and Mrs. Rafael Garcia Jr. (Ret.)
 Diana Garcia-De La Cruz

Aric and Elizabeth O. Garza
 Armando J. Garza
 Bertha M. Garza
 Diane A. Garza
 Esther G. Garza
 Gonzalo Garza, Ph.D.
 Gregory R. Garza
 Edgar A. Gase
 Maura K. Allen Gast
 Robert B. Gauntner, Ph.D.
 Emil L. Gavlick
 Chris A. Geckler
 *Judy M. Geelhoed
 Eugene E. Geimer
 Steven G. Gengenbacher
 Gerard A. Geppert
 Clarence A. Gerfers Jr.
 R.C. Gerhardt, Ph.D.
 *Kimberly D. Barnett Gibson, Ph.D.

Gus N. Gikas
 Clarence J. Gillig III
 Tom R. Gish
 Theodore D. Gittinger
 James F. Gladson Jr.
 William R. Glenn Jr.
 Corles N. Goff
 Elizabeth A. Goldsborough
 Michael G. Gomez
 John A. Gonzaba, D.O.
 Edward T. Gonzales
 Maria Flores Gonzales
 Daniel M. Gonzalez
 David O. Gonzalez
 Edgardo A. Gonzalez Jr.
 Joel R. Gonzalez
 Mario Javier Gonzalez
 Reyes C. Gonzalez
 Ricardo Gonzalez
 David A. Gorman
 Sidney F. Goslin
 *Elizabeth C. Gouldin
 Francisco G. Grajales
 Charles D. Grant Jr.
 Martin J. and *Loraine M. Green
 Robert Green
 Robert D. "Bob" Green
 Stephen P. Grega Jr.
 Gerald H. Grewe
 Dr. David L. and Patsy Grice
 *Michael D. Griffin
 Julie A. Grothues
 Martha Vargas Grove
 Walter Grunwald
 *Argelio Guajardo
 *Beatrice Guajardo-Candela
 Richard A. Gueringer
 Francisco Guerra
 Severiano Guerra Jr.
 Richard F. Gunst
 Mr. and Mrs. Henry C. Gutierrez
 Javier Gutierrez
 Alonzo Guzman Jr., M.D.
 Jacinto J. Guzman
 Jim Guzzi
 Trice W. Hass
 Charles W. Hack
 Colleen Hagan
 Janet Riola Hale
 John C. Hale
 William T. Haley Jr.
 Alex Halff
 Bennett T. Hall
 W. Wendell Hall
 James Hamilton
 Dorothea G. Hamlin
 John C. Hammer
 Don R. Hammonds
 *Arthur D. Hanna
 Damian and Esther Hanna
 Britannia Hardee
 Harlan and Harlan/
 Daniel J. Harlan
 Clifford J. Harle
 Rebecca F. Harrington

The St. Mary's University Honor Roll of Donors

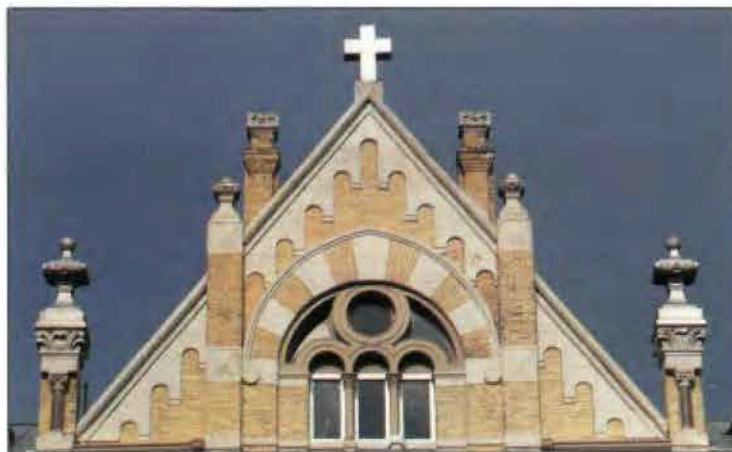
John F. Harris Jr.
Lupe L. Harvey
William M. Hathaway
Roy L. Hauger
Patricia S. Havel
Vernon J. Hayden
Mary Bernadette Hayes
Lisa B. Hazel
Joe Healy
Daniel J. Hebner
Robert E. Hebner, Ph.D.
Paul C. Hedges
James Heiser
Mary Alice Helmsing
+Henry's Puffy Taco
Harry S. Hentschel
Henry S. Herbst
Alexander M.
Hernandez
*Betty J. Hernandez
Luis A. Hernandez
Lt. Col. Victor M.
Hernandez Jr. (Ret.)
Jesse Herrera
Kathy Hess-Reneau
James Byrne Hickey
William J. Hickey
Trent Hicks
*J.A. Hilderbran
Andrew J. Hill
Jon E. Hitchcock
Michael M. Hodges
William R. Hodges
R. Michael Hoey
*Thomas J. Hoffman,
Ph.D.
Michael and Leeny
Hoffman
Peter Hoffmann-Pinther
Sara A. Hogan
*Alfred A. Hohle Jr.
Florine E. Holden
John Taylor Hood
Noreen Hook
Charles A. Hoover
David M. Hope
Joan F. Hopkins
Christopher R. Horner
Michael C. Hotard,
M.D.
Timothy P. Hough
John Page Houston
Deborah O. Cano
Howard
Steven E. Huck
*Maria "Dolly" Huck
Darrel W. Hudson
Thomas M. Hughes
Rose Mary G. Huizar
Richard C. Hulboj
Daniel C. Hunt
Rodney L. Hunt
R. Kenneth Hurrington
William D. Hurt
Nancy L. Husmann
Lt. Col. Charles T.
Hutzler
Facilities Inc./Robert L.
Hutzler
*Djaffer Ibaroudene,
Ph.D.
Irma C. Ibarra

Diane M. Icenogle
Mariscela Cortez Ide
*Nancy M. Iragorri
+Kimberly Isom
+Charo Jacinto
Charles H. Jackel
W. Hermas Jacques
Jailhouse Cafe Inc.
Bob and Sheila Jaklich
Max J. Jalufka
Margaret M. Janecek
Robert E. Janert
Michael G. Jansen
James E. Jenney
+Steve Jensen
Pedro E. Jimenez
Douglas D. Johns
Karen R. Johnson
Lt. Col. Donn C. Jones
(Ret.)
Fred R. Jones
Phyllis Derby Jones
Jimmie D. Jordan
David E. Jungbauer
+Juvenile Detention
Center
K&J Properties/Kenneth
L. Walla
+KXTN Radio
Andrew J. Kaczkowski
Kenneth F. Kalka
Dale H. Kangas
*Ann D. Karam
Paul M. Karam
Kelly M. McCormack
Karnei
*Gary Karshner, Ph.D.
Cynthia Rather Kautz
Bobby Kawazoe
Carrol T. Keller
Marion Keller
Linda M. Kelly
Mark F. Kempf
Col. William D. Kent
(Ret.)

J. Earl King
Kelley S. King
Albert G. Kirchner
Henry G. Kleck
Thomas A. Klimas
Alice A. O'Keefe Knapp
Andrew Q. Knapp
Mary C. Kneese
George L. Kocian Jr.
Flo Kolodzie
Doug Mailman and
Carmen Kolyer
+Lawrence Kondziela
Stanley J. Konieczny
John Korn
John F. Kotzur
David Kraus
Frederick E. Kraus
Vincent Krause
Henry G. Krausse Jr.
*Kimberly Kreider
Robert J. Kroeger
Michael J. Krupski
David A. Kuebker
Francis H. Kuhn Jr.
Thomas A. Kuntz
Ralph J. Kunz IV
Anita Kushwaha
Col. William D. Kutac
(Ret.)
Jose J. Kypuros
Linda K. LaGrone
Gladys Jenschke LaMere
+Lackland Air Force
Base
George T. Lagleder
*C. Louise Lagutchik
Genevieve F. Lake
Clem Lamza
Vernon H. Lanctot
Carol P. Landgraf
Michael B. Lane
Ben Langer
Max T. Langley
Kevan K. Langner

Don Lecoche
Louis S. Lecoche Jr.
Jack D. Lee
Jim W. Lee
*Mei-Lin Lee
Walter T. Lee
*Cheryl C. Lemon
Carol M. Leopold
Platon Lerma
Robert C. Letsch
Margaret Strauss Levy
Stephen D. Lewis
Terry W. Liddell
Kym Benson Lifshutz
J. Patrick Lincoln Jr.
James P. Lincoln
Donald K. Litchfield
Carol G. Locke
Billy R. Locke
Karen Jo Loeffler
Raymond M. Loera CPA
Theodore A. Longobardi
Michael Looney
*Alfred F. Lopez
Diana M. Lopez
Jose M. Lopez
*Linda C. Lopez
Rosa C. Lopez
Louis E. Loth
William G. Louis, M.D.
Capt. P.E. Loustaunau
(Ret.)
Homer T. Love Jr.
Mark Luber
+Luby's Cafeteria-
Bandera Road
Lt. Col. Raymundo R.
Luna (Ret.)
Reuben H. Luna
Joe Lutostanski
Clayton J. Lutz
Milton J. Lutz Jr.
*Charlene Lynch
Joseph H. Lynch
*Moira H. Lynch

Peter E. Magre
Virginia M. Malave
Rosalyn T. Mallet
Lt. Col. Tord Malmquist
(Ret.)
Claire Manes
Carl M. Manning
Raymond Mantsch
Ellen Manzullo, M.D.
John F. Marchi
Mr. and Mrs. Bobby
Margo
Thelma Marichalar
Yolan N. Marinez
Mildred L. Marks
Marvin J. Marnock
Theresa L. Marquina
Francis G. Martin
Judy B. Martin
Sgt. 1st Class Mary Ann
Martin
Estanislado Z. Martinez
Mr. and Mrs. Ferdinand
Martinez
Fortunato J. Martinez
John A. Martinez
Maria C. Martinez
Rebecca Martinez
Maj. Richard H.
Martinez
Cmdr. R.P. "Rick"
Martinez
Steve E. Martinez
*Tomas S. Martinez
John A. Maskey
Rebecca S. Mason
Lou Maspero
Cynthia Y. Massey
Cynthia A. Mateker
Stacie M. Matz
John B. May
Robert A. Mazzoni
Harvey E. McBee
W.F. Jr. McBrearty
Mark Alan McCabe
Douglas and Leticia L.
McCardle
Pat and Tom McCarty
James F. McCormick
Louis H. McCormick
*Timothy S.
McCormick
Harold S. McCrabb
*Jean Elisabeth
McDonnell
*Lisa R. McDougle
Patrick K. McDowell
Karen Burnis McGovern
Oren H. McGowan
Santa Fe Lakeside
Landing/Richard L.
McKinney
Lt. Gen. Thomas H.
McMullen (Ret.)
Lee F. McNamara
Jill McNichol
Dennis C. McSherry
Robert C. Mecke
David E. Melchor
Ruben R. Melchor



Kathryn M. Kernan
Norma Sandoval
Ketchum
Kenneth H. Kidwell
+Kiobassa Provision
Co.
Cheryl Kiobassa
Kindervater

John Larque Jr.
Barbara R. Laskowski
Mr. and Mrs. Joseph M.
Latronico
James Lazarus
Lloyd Le Blanc Jr.
*Margarita Leal
Marianne M. Leal

Rusty Lyons Jr.
MB&A
Communications
Wesley Mabrito Jr.
C. Roger Macias Jr.,
D.D.S.
Lucille A. Macias
+Jessica Magana

The St. Mary's University Honor Roll of Donors

Blanca Chapa
Menchaca
John A. Menchaca,
M.D.
Kirk Menczer
Joe A. Mendoza
*Joseph A. Mendoza
*Richard A. Menger,
Ph.D.
F.G. Mergele Jf.
Christopher Metress
James A. Meyer Jr.
Quentin D. Meyer
Terese A. Meyer
Paul W. Mifsud
*Charles D. Migl
Carroll J. Migura
*Anne E. Miller
Bert G. Miller
*David A. Miller
L.S. Miller
Edward Millman Jr.
Robert V. Mills
Mr. and Mrs. Joseph H.
Minor
Jerry Mispagel
Glenn Mitchell
Nell Mitchell
Christina Mitchell-
Tomasini
Judy C. Moake
John R. Monier Jr.
John T. Monk
Max Montegut
Jose A. Montemayor
Sister Anastasia Moore
*John P. Moore
Walter E. Moore
Gloria P. Morales
Maj. Joseph A. Morales
(Ret.)
*Rodolfo H. Morales
*Rafael G. Moras, Ph.D.
Rold'an Moreno
J.E. Morgan
Roy T. Moriarity
Charles W. Morin
Paul Morkovsky
Bernard J. Morris
D. Lee Morrison II
Thomas B. Moseley III
Curt W. Moy
John A. Mueller, M.D.
Phyllis M. Mueller
Marcus R. Muenchow
Carolina Murguia
*Michael T. Murphy
Gerald T. Mussett
Luis Muzza Jr.
Malcolm A. Myler
Robert B. Namken
Fredericka Nash
Alejandro Nasis
Cornelius H. Nau, M.D.
Joseph Paul Navarijo
Bill J. Neal
*Steven R. Neiheisel,
Ph.D.
John B. Nelson Jr.
Leon Netardus
Rachelle A. Neuman
James A. Neumann

Sgt. 1st Class Jeremiah
Newman (Ret.)
Thomas C. Ney
Guadalupe Nguy
David "Nick" Nichols
Steve Nienhaus
Frank P. Nieschwietz
*Sheila Nix
*Colleen Jo Nolan,
Ph.D.
Celia F. Nordfelt
Joe A. Noriega
Simone L. Norris, M.D.
Debra A. O'Boyle
Peter J. O'Connell
Stephen O'Connor
Phillip G. O'Dell
Loo O'Donnell
Donna O'Kelley
Roger Obregon, D.D.S.
Carl Occhipinti
Lt. Col. Lester C.
Oenning Jr. (Ret.)
*Gary B. Ogden, Ph.D.
Lt. Col. Fred Ondarza Jr.
(Ret.)
+Optimist Club of San
Antonio
Lupe G. Ortega
Cyndie Orton
Maurice O. Ouimet
John F. Owen and Anne
Buxton
Carl V. Owens Jr.
Ronald A. Palmieri
Gloria Palomo
Paul R. Paquelet
Robert E. Park
Jerome G. Parma,
D.D.S.
Irma S. Parra
*Alice A. Parsons
Bernard A. Patak
Alvaro J. Rizo Patron
Deborah J. Patton
Charles A. Paul
+Peak Physique
John H. Pearson
*Rudy Pedraza
Margaret Kloza Pellek
Susan St. George Peluso
Chief Master Sgt. F.
Pena
Col. and Mrs. Oscar J.
Pena (Ret.)
Roy A. Pennycuick,
Ph.D., D.SC.
Maj. Walter R. Peppers
(Ret.)
Donna C. Pereira
Ernest Pereyra
Armando Perez and
Jesusita Aleman-Perez
John Perry
Paul E. Perry
*Mark B. Persellin,
Ph.D.
*Karen Persyn
Tom Peterson
Tony and Marlene
Petrocchi
Dr. Sandra Lee Pfister

Gus Pflugmacher III
Patrick M. Pfrang
Ann M. Phillips



Joseph A. Pichler Jr.
Pie and Sons Grocery
Edward L. Pina
Richard D. Pina Jr.
*Dianne Pipes
Robert Planto
Michael T. Pledge
Victor J. Pohler
Anna M. Tellez Poland
Bill E. Polasek Jr.
*Raymond S. Pollok
Darrell Pool
Gage Pope
Newton Powers
David Pozzi
John D. Prevette
Nicki Prevou
Denise V. Pruett
John C. Quebe
Matthew M. Quinlan
Joseph H. Quintanilla
Hec Quintero
Jerome Quintero
David W. Rainosek
Lambert W. Rakowitz
Dan and Cathy Ralph
Michael J. Ramey
*David E. Ramirez
David J. Ramirez
Raymond M. Ramirez
Rosalie F. Ramirez
Tomas H. Ramirez
Manuel A. Ramos Jr.
Ray Rangel
Irene Rangel
*Katherine E. Ray
William H. Ray
Charles C. Redditt
Jeanne M. Redmond
*Bruce A. Reed
Sloan Regas
William Reilly Jr.
Erwin A. Reinhard
Trini F. Rendon II
Armida Reyes
Arnold Reyes
Maria P. Reyes
Mary Lee Reyna
Michael E. Reyna
*Patrick G. Reyna

Dr. and Mrs. Timothy J.
Richards
Carol L. Richter

William H. Richter
*Daniel C. Rigney, Ph.D.
Darby Riley
Philip J. Rink
Carol A. Risz
Everett A. Risz
*Fernando Rivas, Ph.D.
Rudolph E. Rivas
Alfonso G. Robalin
David F. and Stella
Roberts
Harold L. Roberts
John M. Robison
*Ruth R. Rodgers
Andrew Rodriguez
Anthony H. Rodriguez
Sr.
Armando S. Rodriguez
Catherine M. Rodriguez
Fernando A. Rodriguez
J. Raul Rodriguez
Jesse Rodriguez
Lucia R. Rodriguez
Matthew A. Rodriguez
Meliton Rodriguez
O.C. Rodriguez
Rocio Rodriguez
Ronald D. Rodriguez
Clinton W. Roeder
Julie Rohmer
Gloria E. Roicki
*Rosalind V. Roland
Michael G. Romell
Dorothy A. Rosales
*Steve Rosenauer
Kenneth and Belinda
Rosokoff
Jan S. Ross
Charles J. Rother
Ben D. Rowe
Woodrow W. Roy
Tom Rozzi
Jeannie Rudd
James R. Ruegg
Ed. V. Ruhnke Sr.
Jerry Ruhnke
Susan P. Russell
Bernard Rust, D.D.S.
Charles F. Ruzicka
Joseph L. Ruzicka Jr.

+San Antonio
Independent School
District

+San Antonio Police
Department-Culebra
Linda M. Saathoff
Majorie A. Sablik
Roel A. Saenz
St. Mary's University
Development Staff
Alex Salaiz
Adriana Salinas
Armando Salinas
Trudy G. Salinas
Ann E. Sammis
*Carlos C. Sanchez
Gerardo J. Sanchez
Griselda Sanchez
Joe Jesse Sanchez
Nick M. Sanchez
Patricia D. Sanchez
Mr. and Mrs. Sophie and
Agustin Sanchez
Susie R. Sanchez
George E. Sandefur
Chief Master Sgt. Jesse
Sandoval
Johnny R. Sandoval Jr.
Saul Sandoval
*Carmen Saucedo
W. Charles Sawyer
Michael B. Saxe
Anita C. Saxine
Joseph M. Schallmoser
D.W. Schaumburg
Clarence A. Scheel
Curtis Scheh
Michael A. Schelper
Mary N. Schleinschok
Georgina Schmahl
Arthur J. Schmidt Sr.
Thomas R. Schmidt
Robert L. Schmoekel Sr.
Neil O. Schneider
Stephen G. School
Clint Schroeder
Edna A. Schroeder
Aubrey P. Schumann
Ann Hines Scott
Irwin E. Scott
*Leonard W. Scott
Pamela C. Scott
Elena Selles

The St. Mary's University Honor Roll of Donors

Bernadette M. Serbantez
 Albert I. Serna IV
 Linda A. Servantez
 Domingo R. Setien
 Vernon R. and Dr.
 Cynthia Shade
 David C. Sharman
 Edward F. Shaughnessy
 III
 Patrick K. Sheehan
 James R. Sherwood
 *John G. Shinal
 Lee F. Shinn

Larry Starkey
 David D. Starks
 Maj. C.A. Staub (Ret.)
 Victor Stavinoha
 Anita R. Steele
 Dan Stehling
 Bob Steidel
 Charles P. Steinmetz
 Edward F. Stemas
 Robyn Stewart
 David Stockton
 Leslie Stokes
 O.M. Storlie

Robert Taylor
 Carlos G. Tejada
 M. Stella Tenorio
 Shigeo Terasaki, M.D.
 +Texans' War on Drugs
 Texas Assn. of School
 Boards Inc.
 +Texas Dept. of Public
 Health
 *Robin Thedford
 Katrina H. Theis
 *Laurel A. Thomas
 Michele C. Thomas
 Clifford F. Thompson
 Ronald B. Thorne
 John Thornton
 Rev. William H.
 Thurmer
 Thomas Peter Tibiletti
 Justus Tice
 Paul Tisdale
 Jose L. Tobias
 John J. Tobin Jr.
 Richard Tobin Jr.
 Kathleen A. Olliges
 Tofall
 George A. Toliver
 Vivian Flores Torres
 D.L. Traber
 Celestine M. Trainor
 *Michele L. Trankina,
 Ph.D.
 Kathy Trent
 Martin B. Treuhaft
 Ana C. Trevino
 Delilah S. Trevino
 *Jesse R. Trevino
 Robert J. and Linda S.
 Trigilio
 Oscar A. Troncoso
 Dr. and Mrs. Michael
 and Janice Troy
 Daniel J. Tschoepe
 Lucy Tucker, LPC
 M. Patrice Tucker
 Rita M. Torres Tucker
 Lt. Col. Jeff R. Turner
 (Ret.)
 Teresa A. Turner
 Mary Rohmer Uhlig
 Benedict J. Ulcak
 Ralph M. Urias Jr.
 *Carolyn Uvietta
 Lt. Cmdr. F. Valdes
 (Ret.)
 Henry Valdespino Jr.
 *Gerry A. Valdez
 Oscar T. Vale
 Marjorie E. Valentine
 *Norma J. Valle
 Mari Vallone
 *Dixie L. Van Eynde,
 Ed.D.
 Gilbert Vara Jr.
 *Rafael A. Varela
 +Pamela L. Varney
 George A. Vasill
 Adilia M. Vasquez
 Jose F. Vasquez
 Col. L.R. Vasquez Jr.
 Sandy L. Vasquez
 Gail Walters Vaughan

Jim Veltman
 J. Jorge Verduzco
 Walter Jay Verlander
 Johnny L. Veselka
 David J. Vetter Jr.
 Augusto Alberto Vidales
 +Villa Rosa Hospital
 Maria Pena Villanueva
 Alejandra I. Villarreal
 Alfred G. Villarreal
 Fernando Villarreal Jr.
 *James J. Villarreal
 Javier C. Villarreal
 *Kathy K. Villarreal
 Melchor D. Villarreal
 Mr. and Mrs. Rodolfo L.
 Villarreal III
 Sandra C. Villarreal
 Patricia Vinton
 Marilyn S. Vogt
 Tom Vogt
 +Vogue Beauty School
 Thomas A. Vorpahl
 Lawrence W. Wagner
 *Rosemarie Wahl, Ph.D.
 Eugene J. Walker Jr.
 John H. Walker Jr.
 Nancy M. Wall
 Joan Wandrei
 R.B. Wangler
 Carl O. Wanke
 Agnes G. Ward
 Daniel A. Warniment
 Marianne D. Waters
 Julie Hoelscher Weber
 John Bryson Webster
 *Stephen K. Weed
 Heidemarie Z. Weidner,
 Ph.D.
 Phillip D. Weihs
 Kenneth B. Weis
 Sara W. Weiss
 John Welch
 Richard J. Weniger
 Vincent A. Wesch
 Patrick L. West
 Eloise S. Weston
 Rupert J. Weyand
 Carl L. White Jr.
 Stan Whitener
 Susan Garner Whittle
 Earl E. Whitworth
 Phyllis Koelzer Wick
 Ken Wiemar
 Lewie Wiese
 Frank W. Wiesehan
 Jerry N. Wiggins
 Kathy Ireland Wilkinson
 Mrs. George (Barbara)
 Williams
 Dana and Roger
 Williams
 Stone Williams
 Imogene F. Williams
 Mary Jean Williams
 Paul E. Williams
 Wyatt H. Williams
 Pat L. Wilson
 Randolph Wilson
 Robert J. Wingenter
 David Winkley
 John K. Wisniewski

William E. Wittenauer
 Michael Wohlfarth
 Carlos R. Wolfe II
 Gerard E. Wolff
 Judy Lee Wong
 Garry Woo
 Harold C. Wood Jr.
 J. Fred Wood
 +World Gym
 *Kathleen A.
 Worthington
 *Jeanne Wright, Ph.D.
 Robert W. Wright
 Roderick Wright
 Becky Yanez
 *Dora A. Ybarra
 Nat Ybarra Jr.
 James T. Yeagan
 Edward Yuhus
 Mrs. Carmen E.
 Yzaguirre
 Ralph Yzaguirre
 Richard H. Zabransky
 Matthew R. and Susana
 Castano Rahn
 Dan Zatopek
 Ruth Zealberg
 Peter A. Zerda
 Martin H. Zolkoski

In Honor Of...

Gifts listed below were made to the university in recognition of the achievements of others. The names in bold designate the honoree, followed by the donor(s).

Reynaldo Alejandro
 Farmers Insurance
 Group of Companies
Brother John Black,
S.M.
 St. Mary's University
 Jr. Guild
Justice John Cornyn
 Ewing Werlein Jr.
 ***Dr. Charles L. Cotrell**
 *John M. Schmolesky
Brother Charles
***Cummiskey, S.M.**
 Gregory J. Weisbruch
Evelyn Woodley
 Dryden
 Kenny Dryden
 Jane Dryden Louis
Domingo R. Garcia
 Farmers Insurance
 Group of Companies
***Brother Paul Goelz,**
S.M.
 Dr. Roy E. Chapin
Mary Jane Rodriguez
 Sharon M. Rodriguez
Jose H. Unpingco
 The Ford Foundation
***Pamela Wadsworth**
 Ann M. Robles



Mr. and Mrs. Lynwood
 C. Siebold
 Arthur P. Sierra
 Phillip G. Sims
 Felicia D. Siverly
 Peggy J. Skinner
 Barbara Caroline Slavin
 Katya Thompson Smart
 Allan Ray Smith
 Mary McGinty Smith
 Paul D. Smith
 Lt. Col. Paul L. Smith
 (Ret.)
 Richard R. Smith
 General T.G. Smith
 Col. Allen T. Snyder
 Steven J. Solcher
 *Patricia J. Somach
 James Sosa
 Mary F. Sowder
 Lee Sparks
 Milton C. Spaulding
 Mary Ann Spears-
 Howell
 Maj. Leonard H. Specht
 Manny Spector
 Edward Speed
 Col. Anthony A. Speier
 (Ret.)
 +Sports Special T's
 Donald E. Sprague
 Terry J. St. Marie
 Claude I. Stanush
 Daniel J. Stanush

Virginia E. Stowitts
 Joe Strain
 M. Kathleen Stroud
 Harold D. Stull
 Patrick Sturdivant
 John S. Sudela
 Thomas J. Sudikatus
 Anna M. Suescun
 Rodney D. Sullivan
 Lt. Col. J.G. Sumner
 (Ret.)
 Sunshine Distributors
 Inc.
 Maj. Manuel E.F.
 Supervielle
 Jane Swaggerty
 Lisa A. Swartz
 Richard L. Sweeney
 Lori Swete
 Elizabeth R. Swize
 William R. Swope
 Edwin M. Sykes Jr.,
 M.D.
 Janelle Marie Sykes
 Sykesville Marianist
 Community
 Joseph J. Syslo
 G.R. Taliaferro
 Bernard J. Tallerico
 *William M. Tam
 Linda M. Tankersley
 Claude H. Tarrillion
 Edward J. Tarrillion
 Judine Taylor

The St. Mary's University Honor Roll of Donors

Rev. James A. Young, S.M.
James H. Sorenson Jr.
Rabbi and Mrs. David Jacobson

In Memory Of...

The following gifts were made to the university in loving memory of departed family, friends and colleagues. The memorialized individuals are in bold.

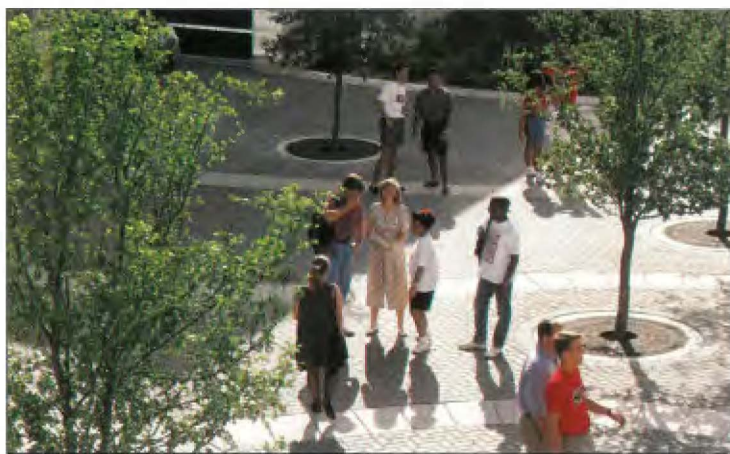
Ruth Camp
Bird & Noll
1st Lt. Thomas James Chiminello
Frederic W. Morton Jr.
Charles Calder Clubb
Mrs. Mary C. Clubb
Ewald E. (E.E.) Eckert
Bird & Noll
Edward Lyle Flinn
Bird & Noll
Catherine M. Frieburger
Cletus N. Frieburger
Mary Szlaius
Kay Engelhardt
Annie Bose Grainge
Romie Dufner and Patte
Margaret F. Griffin
Kara Hultgreen
Bird & Noll
Monsignor Urvan Juraschek
Lt. Col. Jack C. Zorka (Ret.)
Jerry Koett
Bird & Noll
Brother George Kohnen, S.M.
William Carl Schell
Bernice Landauer
Bird & Noll
Jo Mills Latham
Mr. and Mrs. Arley L. Barnett
Richard E. Cruz
Mr. and Mrs. E.R. Finney
C.H. Hinton
Mr. and Mrs. Jack S. Hudgins
Robert M. Kendrick
Andrea Laster
Dr. and Mrs. Pruett Moore Jr.
Abraham Moss
Ernestine Owen
Vance Jay Owen
William E. Owen
William E. Owen Jr.
Mildred E. Paul
Victor L. Reeves

Brother Herbert Leies, S.M.
Robert L. Grams
Ana Laura Lopez
Carl Alan McNeill
Diane Willinbrock McNees
Mr. and Mrs. Kenneth Dugosh
Angela Melton
Dave and Kaye Foster
Amy Foster
Henderson
Frank Mery
*Mary R. Alfaro
Charles H. Miller Sr.
Frank M. Dabalack
Mrs. Zane A. Nauham
Bird & Noll

Barbara Bader Aldave
Mary R. Alfaro
Mary E. Almanza
Edwin P. Altomare
Daniel Alvarez
Ernest Roy Amo
Rudy Anzaldua
Viola D. Arellano
Robert B. Babcock, Ph.D.
Mary Anne Barnett
Alice F. Barrientes
Robert R. Barton
Richard Bauer Jr., Ph.D.
Lonnie Beene
Sue T. Bentch
Roger L. Bentson
Gerry W. Beyer
Mary Sue Blansett

Richard E. Flint
Debrah J. Fox
Susan K. Galloway, Ph.D.
Elise D. Garcia
Judy M. Geelhoed
Kimberly D. Barnett Gibson, Ph.D.
Hector Gonzalez
Elizabeth C. Gouldin
Loraine M. Green
Michael D. Griffin
Argelio Guajardo
Beatrice Guajardo-Candela
Arthur D. Hanna
Gloria E. Hanna
Sgt. Thomas Harrison
Mary E. Harston, Ph.D.

Linda C. Lopez
Sister Grace Luther, F.M.I.
Charlene Lynch
Moira H. Lynch
Tomasa S. Martinez
Zaida L. Martinez, Ph.D.
Timothy S. McCormick
Rebeckah J. McCoy
Jean Elisabeth McDonnell
Lisa R. McDougle
Joseph A. Mendoza
Richard A. Menger, Ph.D.
Charles D. Migl
Anne E. Miller
Rev. Charles H. Miller, S.M.
David A. Miller
John P. Moore
Rodolfo H. Morales
Rafael G. Moras, Ph.D.
Michael T. Murphy
Steven R. Neiheisel, Ph.D.
Sheila Nix
Colleen Jo Nolan, Ph.D.
Gary B. Ogden, Ph.D.
Alice A. Parsons
Rudy Pedraza
Mark B. Persellin, Ph.D.
Karen Persyn
Dianne Pipes
Raymond S. Pollok
Gerald B. Pratt, Ed.D.
Richard S. Pressman, Ph.D.
David E. Ramirez
Katherine E. Ray
Bruce A. Reed
Patrick G. Reyna
Bahman Rezaie, Ph.D.
Daniel C. Rigney, Ph.D.
Fernando Rivas, Ph.D.
Ruth R. Rodgers
Rosalind V. Roland
Steve Rosenauer
Carlos C. Sanchez
Carmen Saucedo
James B. Sauer, Ph.D.
Rissa A. Schultz
Gary J. Scott, Ph.D.
Leonard W. Scott
John G. Shinal
S. Eugene Sims, Ph.D.
Patricia J. Somach
Nancy Szalwinski
William M. Tam
John Teeter
Geraldine Telepak, D.Min.
Robin Thedford
Laurel A. Thomas
Jerry D. Todd, Ph.D.
Brian Toyne, Ph.D.
Michele L. Trankina, Ph.D.
Jesse R. Trevino
Carolyn Uvietta
Gerry A. Valdez
Norma J. Valle



Edmund H. Okruhlik
Mrs. Edmund H. Okruhlik
Darson H. Persyn Sr.
Bird & Noll
Edward L. Pigott Jr., D.V.M.
Bird & Noll
Bonifacious Scheel
Bird & Noll
Mrs. Laura Adela Van De Walle
Bird & Noll
Jim Viner
Bird & Noll
Jerry Wesolowski
Bob and Bea Wilson and family

The St. Louis Circle,

named for the university's oldest building, St. Louis Hall, recognizes the employee donors of the University.

Barry E. Abrams, Ed.D.
Anna Aguilar
Cecilia T. Aguilar
Elijah F. Akhahenda, Ph.D.

Mary C. Braley
Phoebe Briseno
Caroline A. Byrd
Ann Marie Caldwell, Ph.D.
Jack Calentine, Ph.D.
Stephen Calogero, Ph.D.
Ruben A. Candia, Ph.D.
Joan S. Canty
Jose M. Cimadevilla, Ph.D.
Alan Cirlin, Ph.D.
Mark W. Cochran
Deidra E. Coleman
Dana L. Cooper, Ph.D.
Angelina M. Cortez
Charles L. Cotrell, Ph.D.
Lydia Cramer-Reyes
Graciella M. Cuevas
Pamela S. DeRoche
Alejandro S. Delgadoillo
Nora Demleitner
Paul A. Diaz
David A. Dittfurth
Gerard A. Dizinno, Ph.D.
Janet B. Dizinno, Ph.D.
Jon C. Dubin
Tara B. Engberg
Don Ferguson
Paul F. Ferguson
Homer D. Fetzer, Ph.D.
Melba D. Fisher

Emily Fowler Hartigan, Ph.D.
Thomas L. Heaton
Betty J. Hernandez
J.A. Hilderbran
Thomas J. Hoffman, Ph.D.
Alfred A. Hohle Jr.
Robert C. Howe
Maria "Dolly" Huck
Djaffer Ibaroudene, Ph.D.
Nancy M. Iragorri
Charles W. Jenkins
Karen A. Johnson
Ann D. Karam
Gary Karshner, Ph.D.
Amy H. Kastely
James L. Kastely
Anthony Kaufmann, Ph.D.
Naghi Kebriaei-Tabari
David R. Krause
Kimberly Kreider
Candace J. Kuebker
C. Louise Lagutchik
Margaret Langford, Ph.D.
Margarita Leal
Mei-Lin Lee
Rev. John G. Leies, S.M.
Cheryl C. Lemon
Aloysius A. Leopold
Alfred F. Lopez

The St. Mary's University Honor Roll of Donors

Dixie L. Van Eynde, Ed.D.
 Rafael A. Varela
 James J. Villarreal
 Kathy K. Villarreal
 Pamela M. Wadsworth
 Rosemarie Wahl, Ph.D.
 Stephen K. Weed
 Daniel J. White
 Karyn S. Williams
 Kathleen A. Worthington
 Jeanne Wright, Ph.D.
 Dora A. Ybarra
 Richard M. Yerly

Matching Gift Companies

Aetna Foundation Inc.
 Alcoa Foundation
 The Allstate Foundation
 American Cyanamid Co.
 American National Can Co.
 American States Insurance
 Amica Life Insurance Co.
 Armstrong Foundation
 Arthur Andersen and Co. Foundation
 Ashland Oil Foundation Inc.
 Burroughs Wellcome Co.
 CIGNA Foundation
 Cabot Oil and Gas Corp.
 Chevron U.S.A. Inc.
 Dean Witter Reynolds Inc.
 The Dow Chemical Co. Foundation
 EAI Corp.
 EXXON Education Foundation
 Halliburton Foundation Inc.
 IBM International Foundation
 IDS Financial Service Inc.
 KPMG Peat Marwick Foundation
 Lehman Brothers Inc.
 Lever Brothers Co. Foundation
 MSI Insurance Foundation
 Merrill Lynch and Co. Foundation Inc.
 Mettler Toledo Inc.
 Mobil Foundation Inc.
 Monsanto Fund
 Motorola Foundation
 NationsBank Corp.
 Occidental Petroleum

Charitable Foundation Inc.
 Panhandle Eastern Corp.
 J.C. Penney Co. Inc.
 Philip Morris Co. Inc.
 Phillips Petroleum Foundation Inc.
 Pitney Bowes Post Newsweek
 Stations-San Antonio/KSAT-TV
 Price Waterhouse Foundation
 Provident Life and Accident Ins. Co.
 The Prudential Foundation
 SBC Communications Inc.
 SBC Foundation
 Safeco Insurance Co.
 Scott Paper Co. Foundation
 Shell Oil Co. Foundation

Donors to St. Mary's University through the Texas Independent College Fund

Acme Brick Co.
 Louis J. Agnese Jr., Ph.D.
 AlliedSignal Inc.
 American General Corp.
 Archer-Daniels-Midland Foundation
 ARCO Foundation
 AT&T Foundation
 Blue Bell Creameries Inc.
 Bridgestone/Firestone Trust Fund/ A Charitable Trust of Bridgestone/Firestone Inc.

R.R. Donnelley and Sons Co.
 James R. Dougherty Jr. Foundation
 Ebby Halliday Inc.
 Ernst and Young
 W.J. Farrell
 FIHE Staff
 First Interstate Foundation of Texas
 Howard L. Terry
 Ford Motor Co. Fund
 Garvey Texas Foundation Inc.
 Gerber Co. Foundation
 Goodyear Tire and Rubber Co. Fund
 Kelly-Springfield Tire Co.
 GTE Foundation
 Paul and Mary Haas Foundation
 Corpus Christi Oil and Gas Co.
 Handy and Harman Foundation
 Dr. Patricia A. Hayes H.E.B.
 Hobby Foundation
 Dr. E.D. Hodo
 Hoechst Celanese Corp.
 Houghton-Mifflin Co.
 Houston Lighting and Power Co.
 Hurd Enterprises Ltd.
 IBM Corp.
 ITT Corp.
 Johnson and Johnson Family of Companies
 Johnson and Johnson Medical Inc.
 Glynnne and Sondra Johnston
 Sam and Adele Junkin
 Dr. James E. Kirby
 La Quinta Motor Inc.
 Liberty Mutual Insurance Group/
 Boston Foundation
 The Linbeck Foundation
 The Lubrizol Foundation
 Luby's Cafeterias Inc.
 Vicki L. Manire
 Martin Marietta Corp. Foundation
 Alfonso Martinez-Fonts Jr.
 Carol L. McDonald
 Dr. Joseph M. McFadden
 Microsoft Corp.
 Mitchell Energy and Development Corp.
 William A. and Elizabeth B. Moncrief Foundation
 Dr. Royce L. Money
 Motorola Inc.
 James and Susan Mulligan
 Nalco Foundation
 Herbert T. Nelson

Dr. Don Newbury
 New York Life Foundation
 Our Lady of the Lake University of San Antonio
 PACCAR Foundation
 Dr. Oscar C. Page
 Panhandle Producing Co.
 Pennzoil Co.
 Philip Morris Co. Inc.
 Phillips Petroleum Foundation Inc.
 Dr. and Mrs. Robert F. Prather
 Radian Corp.
 Reilly Foundation
 Reilly Industries Inc.
 Dr. Herbert H. Reynolds
 Reynolds Metals Co. Foundation
 The RGK Foundation
 Dr. Bob E. Riley
 Dr. Robert F. Sasseen
 Steven and Jacquelyn Sather
 Ron and Marilee Schott
 Dr. Jake B. Schrum
 Service Corp. International
 Sherwin-Williams Foundation
 Southwestern Bell Foundation
 Southwestern Life Insurance Co.
 Star Enterprise
 State Farm Co. Foundation
 Strake Foundation
 Jo Ann Swinney
 Tandy Corp. Radio Shack,
 Computer City, Incredible
 Universe, Video Concepts and McDuff
 Tenneco Inc.
 Tesoro Petroleum Corp.
 Texas Eastman Division
 Eastman Chemical Co.
 Transco Energy Co.
 Triangle Pacific Corp.
 Bruce Hardwood Floors
 Trull Foundation
 Union Pacific Foundation
 Union Pacific Corp.
 Union Pacific Railroad Co.
 Union Pacific Resources Co.
 The UPS Foundation
 University of Mary
 Hardin-Baylor
 DeLora Wilkinson
 Winn-Dixie Texas Inc.
 Zapata Corp.
 Dr. David Zersen



Southwestern Bell Foundation
 State Farm Co. Foundation
 Tandy Corp.
 Tenneco Management Co.
 Tesoro Petroleum Corp.
 Texas Commerce Bank
 Towers Perrin
 USAA
 Valero Energy Corp.
 Venture Stores Inc.
 Warner Lambert Co.
 Witco Corp.

Bristol-Myers Squibb Foundation Inc.
 Burlington Northern Foundation
 Burlington Northern Railroad Co.
 Canteen Corp.
 Capital Cities/ABC Inc. Foundation
 CBS Inc.
 The Chevron Co.
 Citibank N.A.
 Commerical Metals Co.
 Compaq Computer Foundation
 Cristy A. Conner
 Dr. Gary R. Cook
 Dr. Edwin Crank
 Wallace E. Davis, Ph.D.
 Deluxe Corp. Foundation

The St. Mary's University Honor Roll of Donors

St. Mary's University Alumni Association and Fiesta Oyster Bake Corporate Partners

AT&T/Snyder Communications Ltd.
Bausch & Lomb Eye Wear Division
Bayous Riverside Restaurant
Best Tours and Travel
BudCo Inc. of San Antonio/Anheuser Busch
Cellular One
Chick-fil-A Restaurants, San Antonio Area
Coca Cola Bottling Co. of the Southwest
Coyote's Nightclub
Crossroads of San Antonio
Eastman Kodak Co.
Fatso's Sports Garden
Fiesta Texas
First USA Mastercard
Flying "L" Guest Ranch
Frontier Enterprises
GLI Distributing Co.
Garbage Gobbler
Halo Distributing Co./ Miller Brewing Co.
International Bank of Commerce
IMAX Rivercenter
Luby's Cafeteria
NationsBank, Texas
North Park Lincoln Mercury
Pace Picante Sauce/Pace Foods Inc.
Play It Again Sports
Quadrangle Press
Quick Courier
Rock N Java Cafe
San Antonio Coors Distributors
San Antonio Sports
San Antonio Texans Canadian Football Team
Security Service Federal Credit Union
South Texas Health and Fitness Magazine
Texas Lottery Commission
Texas Department of Transportation
Water Street Oyster Bar
Zito's Delicatessen and Sandwich Shops

The Booster Club

directly supports athletic programs at St. Mary's University.

PRESIDENT'S MEMBERS
Jim and Rita Koett
Bill and Joan Kuebker

GOLD MEMBERS
Jon Wampler

BLUE MEMBERS
Ed and Marlena Dupre
Robert Engberg
Richie and Janis Giesecke
James Harrington
Larry and Patsy Noll
Joseph Ojile, M.D.

CENTURY MEMBERS
John Aguillard
Jack Allen
Charles Amato
Jack and Rosanne Ard
Melvin Barborak
Bohn Barham
Richard and Cathy Battersby
Ed and Chris Boyle
Donnie and Gina Britt
Keith and Tricia Brown
Homer Burkett
Frank Cernosek
Dennis Chavez
Virginia Chavez
David Christian
John A. Coleman
Gregory Crane
Tony Crosby
Doug Cross
Joe Cumpian
Ralph Curtis
Maurice DeCock
Joe G. DeLuna Jr.
Roland and Doris DeWinne
Diana Diaz
Ralph and Meg Domas
Chuck and Lorna Dressler
Edward Vincent Dylla
Charles Eads
Steve and Toni Ecker
Steve and Connie Ehr
David Finger
Jackie Fishbech
Robert Galindo
John and Gloria Garoni
Johnny Gavlick
Gene Gittinger
Ted and Barbara Gittinger
Buzz Gittinger
Jaime Goodwin
Jim Gordan
W.N. Gremillion
George and Ella Harris

Chris and Julie Heinrichs
James and Kay Heiser
John A. Heller
John Hemmi
A.R. Herrera
Paul and Ida Hibberd
Alice Hodge
A.J. Hohman
Ralph and Cheryl Hoog
Marcus Hudson
Sonny Infante
*Karen A. Johnson
Judge Tim Johnson
John and Donna Johnson
Solomon Karam
Pat Klasing
David Koenig
Craig Kuebker, M.D.

Rene and Dorothy Mouton
Tad and Sarah Neutze
Thomas Ney
Fred and Sandra Owens
Harry O'Brien
Martha and Buck O'Keefe
Lawrence Del Papa
Henry Rangel
Mike Reimherr
Herbert Robinson, M.D.
Kevin and *Ruth Rodgers
Larry Ruzicka
Philip Ryder
Benny De Los Santos
Charles M. Schill
Baltazar Serna Jr.
Glenn W. Stein

ASSOCIATE MEMBERS
Don Brennan
Robert Cohan
Tom Cribbin
Charles and Margie Eckert
Joe Fischer
Mrs. Edward L. Flinn
Marcus Hudson
Terry and Elaine Johnston
David Martinez
Carl Nicholls
Larry Pescamilla
Eugene and Rose Urbanovsky
Paul Vasquez Jr.
Barbara Zahreih



Ann Lamon
Aldor and Betty Lanctot
William Louis
Diana Lozano
Larry and Joan Lyons
Ed and Becky Magre
Chris and Pat Maguire
Thomas and Barbara Manning
Bob and Carmen Mason
Richard Matye
Madeline McBride
Rick and Jean McBride
Pat and Barbara McCarty
Perry McClendon
Donald McMoy
Andrew L. Meurer
*Buddy and Anna Meyer
*Charlie and Mary Migl
Charlie and Dorothy Migl
Michael and Lana Migura
Jules Monier, M.D.
Donna and Robert Montalbo
Jerry and Gloria Montalbo

Harold D. Stull
Tim and Jane Stults
Ellen and *Richard Szczy
Marshall R. Tannenberger
Gary Tomaszewski
Earnest and Donna Tousey
Leslie W. Tschoepe
Victor and Joyce Vela
John Visinsky
Carl Wanke
Doug and Anna Wealty
Harvey Wehman
Mike White
Hank Wilkinson
Everett Williams
Jim and Norma Wood
Charlie and Theresa Young
Joe and Yolanda Yzaguirre
Jim and *Shirley Zimmerman
Leonard Zinsmeyer



Fall Registration

Enrollment for the 1995-96 academic year totals 4,212 students, of whom 2,600 are undergraduates, 840 graduates, including 56 in the Ph.D. program, and 772 law students.

Of the undergraduates, 54 percent are women, following an eight-year trend of increased female enrollment and, according to registrar Louisa Avitua-Trevino, the academic quality of students is also increasing.

Environmental Studies

A new minor offered this fall, environmental studies, calls for 12 hours of required courses and six hours from two departments outside the major. Brother David Fitzgerald, C.S.C., assistant professor of earth sciences, says the minor deals with educating students of industry, government and law on environmental issues, adding, "To solve growing problems, we need business interests, scientists, legal personnel and social scientists to come together."

New Trustees

New members on the university's board of trustees are: the Rev. Timothy Dwyer, S.M., (B.A. '57) provincial of the Society of Mary for the Province of St. Louis and chancellor of St. Mary's; Raymond Carvajal (Class of '68), co-owner and pharmacist at Carvajal Surgical Medical; John Dewey (B.B.A. '67), managing director, Lehman Brothers; the Rev. James Heft, S.M., Ph.D., provost, University of Dayton, Ohio; Sister Anna Huth, F.M.I. (B.A. '73), provincial of the American Province of Marianist Sisters; Fred Jones (J.D. '79), shareholder, Goode, Casseb & Jones, representing the St. Mary's Law Alumni Association; Patrick Klasing (B.B.A. '71), president, Patema Corp. and All Transportation Inc., representing the St. Mary's Alumni Association as immediate past president; Pat Legan (B.A., J.D. '46) owner, Legan Properties; Max Navarro (B.A. '77, M.S. '80), founder and president, Operational Technologies; the Rev. Ralph Siefert, S.M., D.Min., president, Chaminade College Preparatory School; Phyllis Siegel (J.D. '79), founder and president, Biomedical Development Corp.; and John Stupka, senior vice president, strategic planning, SBC Communications Inc.

Half Million Gift

The St. Mary's Alumni Association recently presented \$501,000 to St. Mary's. The gift included proceeds from the 1995 Fiesta Oyster Bake, donations from the Dallas/Forth Worth and St. Louis chapters, and other programs sponsored by the association.

The endowment now provides scholarships for 53 students to receive full or partial tuition for one to four years.

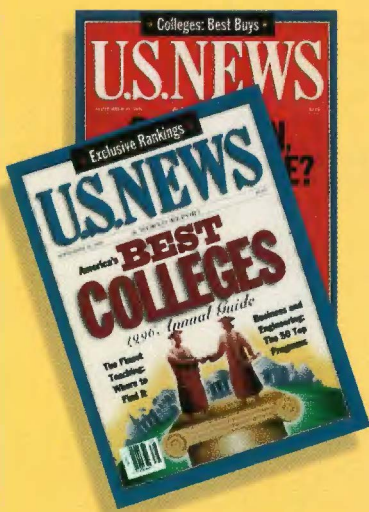


\$1 Million Gift

St. Mary's has received \$1.1 million from the last will and testament of Mary G. Lemke of San Antonio, wife of the late William A. Lemke, former senior vice president of the National Bank of Commerce.

The estate gift will be placed in an endowment and will be used to support the development of educational technology at St. Mary's, including the purchase of computer hardware and software and multimedia equipment and programs.

Lemke was a descendant of pioneer Texan Frank A. Gutzeit, who immigrated to the United States from the province of Alsace, France, 1854. Guzeit settled in Medina County and established a farm and stock ranch at the head of the San Miguel River. In 1868, he moved to San Antonio and purchased property at the head of the San Antonio River.



Best in West

St. Mary's was named one of the 10 "Best Buys in the West" for the third consecutive year by U.S. News & World Report's September issue.

St. Mary's also continues to be ranked in the top 10 universities in the nation for the number of Mexican-American students accepted into medical schools and first in the country for its production of Mexican-American bachelor of arts graduates who complete Ph.D. programs. Female enrollment and, according to registrar Louisa Avitua-Trevino, the academic quality of students is also increasing.



Cotrell Honored

Charles L. Cotrell, Ph.D., (B.A. '62, M.A. '64), vice president for academic affairs, was honored by the American Political Science Association with a Career Achievement Award in recognition of his contributions to scholarship, teaching and civil rights research. The presentation was made during the association's annual convention in Chicago.



Cotrell was a pioneer in voting rights issues in the 1970s. He is credited with having taught and inspired some of the most influential figures in the Chicano civil rights movement, including Jose Angel Gutierrez, founder of the Raza Unida Party, and the late Willie Velasquez, founder of the Southwest Voter Registration and Education Project.

Cotrell joined the faculty in 1966. He has served in various administrative posts, including chairman and graduate adviser in the political science department, assistant to the president for planning and institutional research, and dean of the School of Humanities and Social Sciences. He became vice president for academic affairs in 1986.



Clinton Honors Alum

President Clinton awarded the nation's highest civilian honor to the late San Antonio civil rights leader Willie Velasquez (B.A. '66) at a September ceremony in the White House.

Presenting Velasquez's widow, Jane, with the Presidential Medal of Freedom for her late husband, President Clinton said: "No person who has run for public office wherever Hispanic Americans live, has failed to feel the hand of Willie Velasquez at work....Willie is now a name synonymous with democracy in America. His appeal to the Hispanic community was simple, passionate and direct - *su voto es su voz* - your vote is your voice."

New Law Clinic

The Community Development Clinic in the School of Law gives law students experience in building economic development activities in San Antonio and the colonias of South Texas. Colonias are unincorporated townships along the U.S.-Mexico border where people live in desperate poverty, with no running water, sewerage or paved roads. Students work to help establish community development corporations that will address housing, health care, child care, business development and other needs. They also examine federal and state laws to determine resources that might be available for the economic development of the region and take steps to obtain such resources.

Frances M. Leos is the director. The program was launched this fall with a one-year grant from the Legal Services Corp.

TO HELP THE HOMELESS, students paid \$5 for a movie, soup, crackers, water and to "sleep outside (in the campus Pecan Grove) so others don't have to!" St. Mary's Service Learning Center created the slogan and organized the event. Result: The organizers say St. Mary's is on its way to raising \$35,000 to sponsor a home for the homeless in fall 1996.

Annual President's Dinner

5 Five Tips for Year-end Giving

If you're like most people, you do your major giving toward the end of the year. Here are five tips to help you make the most of your year-end giving.

1. Calculate your income to get a handle on your tax liability. Did your earned income increase? Did you sell any appreciated assets? Will you owe more taxes? By

the time you file your taxes it will be too late to make a charitable gift for the previous year. You may want to move some of your giving forward from next year to create a larger deduction for yourself this year.

Individuals who don't normally "itemize" may find "grouping of gifts" especially useful to take advantage of an itemized tax return.

2. Review your stocks that have been held for more than a year. Which ones have appreciated the most? It may be prudent to make your year-end gift using one or more of these stocks. If you give the stock to St. Mary's and allow us to sell it, you don't incur capital gains tax on the appreciation -- no one pays tax, and you get a deduction for the full amount of the stock. If you can't use all of the charitable tax deduction, you can carry it forward for up to five years. Such gifts are deductible up to 30 percent of your annual gross income.

3. Consider a life-income gift to fit your needs. You can make a gift now, obtain tax benefits and receive income for the rest of your life. Sound good? Our director of planned giving can provide personalized illustrations and printed material to assist you and your advisers.

4. Do your giving early, especially if using non-cash assets. Your advisers and our office of planned giving are very busy at the end of the year.

5. Talk to your adviser(s) before making any significant gift to St. Mary's. You should have your CPA, attorney or other adviser(s) help you understand the impact of your gift on your tax return or estate. We at St. Mary's want your giving to be not only generous and joyful, but prudent.

For more information, contact Pam Wadsworth, Director of Planned Giving, (210) 436-3718; Fax (210) 431-2226; E-mail PAM@VAX.STMARYTX.EDU

President's Dinner Guests. The annual fall event brought together more than 200 loyal St. Mary's donors. Enjoying the evening are top to bottom: Margaret Aluk and the Rev. James Young, S.J.; Art O'Connell and Phyllis Slagat; Freda and Bob Rasow; John Dewey and Brother Paul Goetz, S.J.; Rev. John Muder, S.J., Sarah Galvin and Bill Greehey, and Brother Cletus Brubmann, S.J., and Patry and Greg Cross.

1949

Emmette Debner, BBA, San Antonio, owner of Debner Marketing and Graphics, specializes in managing associations. Major clients include the Veterinary Medical Association of Bexar County and the Texas Veterinary Medical Association.

1950

Ferdinand Stehling, BS, BA, Baytown, Texas, now retired from Exxon Chemical Co., received the 1995 American Chemical Society's Division of Polymeric Materials Science and Engineering Award for Cooperative Research in Polymer Science and Engineering.

1951

Al Sturchio, BME, San Antonio, executive secretary, Texas Bandmasters Association, and president of Sturchio Entertainment Inc., was honored by Religious Heritage of America during its national awards program.

1952

George Ozuna Jr., class of '52, San Antonio, owner of Ozuna and Associates, is a former chairman of the Palo Alto College Board of Trustees. He was honored in August with the naming of the "George Ozuna Jr. Learning Resources and Academic Computing Center" on the campus.

1956

Bob Wilson, BS, BA, Memphis, Tenn., celebrated his 60th birthday with his wife, Bea dela Rosa Wilson, and John Jack Range, BA '57, also of Memphis. Mrs. Wilson was a secretary in the St. Mary's Registrar's Office in the late '50s.

1959

Robert Lytton, class of '59, Bryan, Texas, a research engineer at Texas A&M University, served as a keynote speaker at the 1995 conference of the International Society of Soil Mechanics and Foundation Engineering in Paris.

1962

Phillip A. Finder, BBA, Des Peres, Mo., is an accounting manager for Mid-American Dairymen in St. Louis.

1963

C. Ray Schoch, BBA, New Braunfels, Texas, was elected to the City Council. He is a self-employed certified public accountant.

1964

Robert A. Gonzalez, BME, Davis, Calif., was appointed by the California State Department of Education to the California Arts Project as a policy board member. He participated in the Davis sister cities teacher-exchange program in Uman, Ukraine.

Carlos DeJesus Kazen, BA, Laredo, is self-employed in real estate.

1965

Charlie E. Young Jr., BBA, San Antonio, is owner of Ampersand Travel Inc.

1966

George "Moe" Blakey Jr., BA, Laredo, is the assistant baseball coach at St. Augustine High School. He is president of Blakey Medical Supply Co.

Patricia Egan Britton, BA, Gillette, Wyo., is chief legal officer at Kennecott Energy Co.

Martin P. George, BA, MA '69, St. Louis, owns Electric Motor Service Co.

John F. Harris Jr., BA, MBA '72, San Antonio, is a real estate professional at Century 21.

Carroll T. Keller, BBA, Rio Medina, Texas, is a self-employed farmer.

Richard Laxton, BBA, Bedford, Texas, is chief lending officer at First American Savings Bank.

1967

Sebastian A. Mora, BA, San Antonio, is medical director at Southwest Eye Clinic.

1968

Edward M. Kelly Jr., BA, Naples, Fla., is director of safety and security at Naples Community Hospital.

Anthony T. Patz Jr., BA, San Antonio, is a Realtor with Bradfield Properties.

1969

Col. James E. Cunningham, U.S. Army, BS, Fort Sill, Okla., is deputy director of the Battle Laboratory.

H.C. "Tony" Heldenfels Jr., JD, Corpus Christi, was elected to the City Council April 1, 1995. He is a self-employed attorney/mediator.

Irma L. Rangel, JD, Kingsville, Texas, a state representative, is chairwoman of the House Higher Education Committee. She gave the commencement address at spring 1995 graduation at Texas A&M University.

Louis J. Sanchez, BA, San Antonio, was appointed American Red Cross national chairman of human resources. He was also elected to the Methodist Healthcare Ministries board of trustees in San Antonio. He is executive director of the Character Education Institute.

1970

Conrad A. Diric, BA, San Antonio, is a staff officer, U.S. Special Operations Command, with the rank of lieutenant colonel, U.S. Army Reserves. He is a commercial insurance underwriter at American States Insurance Co.

Rev. Jerry Frank, MA, McAllen, Texas, is pastor at Holy Spirit Catholic Parish. He celebrated 25 years as an ordained priest in June.

Oliver P. Garza, BA, Bogota, Colombia, received the Vasco Nunez de Balboa medal for his work as charge d'affaires at the U.S. Embassy in Panama. The award is the highest civilian decoration presented by the government of Panama to foreign diplomats. Garza served in Panama from September 1994 to February 1995. He now is deputy chief of mission at the U.S. Embassy in Bogota.

Charles Persyn, BBA, Castroville, Texas, is the alternate president of the Physical Evaluation Board at Fort Sam Houston, San Antonio.

1971

James L. DeLane, BA, Olympia, Wash., is manager, accounting policy and audit compliance, of the Washington Department of Social and Health Services.

David N. Hernandez, BS, Radcliff, Ky., is a teacher in Louisville.

Rudy G. Martinez, BBA, Arlington, Texas, is an area manager, external affairs, at Southwestern Bell Telephone in Hurst.

1972

Diane Abdo, BA, San Antonio, an English instructor at the University of Texas at San Antonio, has had an award named in her honor to recognize her contributions to the university's independent student newspaper. The Diane Abdo Outstanding Registered Student Organization Adviser Award is sponsored by the UTSA student government association.

Elizabeth A. Conrad Goedecke, class of '72, Richardson, Texas, received the 1994 Mitchell A. Wilder Award for print materials from the Texas Association of Museums. She is a self-employed graphic designer.

Stephen N. Smith, JD, Hillsboro, Texas, was elected to the board of directors of the State Bar of Texas. He is a partner with Martin, Showers, Smith, McDonald and Bryant in Austin.

1973

Edward S. Cotrell, BA, San Antonio, an instructor at the Alamo Community College District, is treasurer of the San Antonio Claims Association.

Frank Randolph, BBA, Seguin, Texas, is a detective at the San Antonio Police Department.

Thomas A. Repka, BBA, Kerrville, Texas, is treasurer/controller at Kerrville Telephone Co.

1974

Ray Contreras, BA, San Antonio, is an account executive, investments, at Dean Witter Reynolds Inc.

Allan H. Cusack, BA, New Market, Ala., is product manager, analog transmission products, at Motorola Inc. in Huntsville.

Olivia A. De La Zerda, BA, JD '78, San Antonio, is a law clerk at the Law Office of Charles P. Jones.

David D. Garza, BA, San Antonio, is director of The Enterprise Foundation, a national intermediary for government, businesses and neighborhoods throughout San Antonio.

Angelina Kretzschmar, BBA, San Antonio, was appointed legislative chairwoman for Mission City Business and Professional Women. She is an equal employment opportunities specialist at Fort Sam Houston.

Gilbert Lozano Jr., BA, MA 76, Burke, Va., is a U.S. Army lieutenant colonel assigned to the deputy chief of staff for plans and operations at the Pentagon in Washington, D.C.

George "Skip" Noe, BA, College Station, Texas, is city manager for the City of College Station.

1975

Orlando E. Castillo, BBA, Mexico City, is product manager at Southwestern Bell Corp. International. He provides marketing and sales consulting to Telefonos de Mexico.

1976

Jorge L. Farias, BA, Houston, is a consultant and trainer at J. Howard and Associates Inc. He received a doctorate from The Catholic University of America in Washington, D.C., in May 1995. He lectures in ethics, theology and multicultural diversity.

Thomas A. Klimas, MS, Garden Ridge, Texas, is an industrial engineer at Dee Howard Co. in San Antonio. He is a retired colonel, U.S. Air Force.

Peter Vogel, JD, Dallas, was elected to the board of directors of the State Bar of Texas. He is an attorney at Gardere and Wynne.

Curtis E. Wright, MA, Camden, Del., is a senior probation officer at the Department of Correction.

1977

Anna M. Lozano, BA, Austin, is a gynecologist in private practice.

Rosalyn T. Mallet, BA, Dallas, is vice president, franchise systems development, at Applebee's International Inc.

Glynn W. Tschirhart, BBA, Castroville, Texas, was selected as Greater San Antonio Coach of the Year by the San Antonio Express-News. He coached the D'Hanis High School baseball team to a 1995 Class A state championship.

1978

David A. Baram, JD, Bloomfield, Conn., chairman of the Domestic and Legislative Task Force of the Greater Hartford Jewish Federation's Community Relations Council, was appointed to the Connecticut-Israel Exchange Commission.

Elma Salinas Ender, JD, Laredo, is a district judge, 341st Judicial District, Webb County Justice Center.

1979

Carol A. Leonard Gunter, BA, Neptune, N.J., is a computer specialist at Fort Monmouth, U.S. Army.

1980

Kathleen M. Gray, BBA, St. Louis, Mo., is a manager in the benefits group at Rubin, Brown, Gornstein and Co. She is enrolled in the master of science in taxation program at Fontbonne College.

Jose R. Lopez, BA, Houston, is an attorney at Loras and Block.
Alfonso F. Saldana, BA, BBA 85, MS 87, Indianapolis, Ind., is a systems accountant at Fort Benjamin Harrison, U.S. Army.

Raul L. Solis, BA, San Antonio, was promoted to first lieutenant in the U.S. Air Force Reserves. He is a sales agent at USAA.

We'd love to hear from you!

We would love to hear about your recent promotion, vacation, project, marriage or new additions to the family!

We're also interested in your thoughts concerning Gold & Blue. Please use the space below to let us know what you think. Or contact us by E-Mail at ALUMNI @ STMARYTX.EDU

Are you receiving duplicate copies of the Gold & Blue?

Please help us keep our mailing costs down by taping the mail label from the back cover in the space below, so we can delete it from our list.

Address changed?

Please tape the mail label from the back cover in the space below and write in your new address. We look forward to hearing from you!

Use the space below for your name, as printed on the mail label, year of graduation, major, town and state.

Name _____

Yr. of Graduation _____ Major _____

Town and State _____

Daytime Phone No. _____

Comments: (Please specify which subject.) General comments Mail label information Class Notes Other

Please tear along perforated line/fold and tape according to instructions on reverse side.

Kathleen M. Wennemann, BS, Annapolis, Md., is a sales representative at Sigmur BioSciences.

1981

John Paul Bogran, BBA, JD 84, San Antonio, is an attorney in private practice.

Tim Campion, BBA, San Antonio, was promoted to vice president, sales and marketing, at GLI Distributing.

Chris C. Edelen, BBA, Chesterfield, Mo., is executive vice president of operations, photo finish division, at CPI Corp.

David Roberts, BBA, Tulsa, Okla., is a regional sales manager at Schwaab Inc.

1982

Donna Koogle Diaz, BBA, Arvada, Colo., is a personnel section chief at Resolution Trust Corp. in Denver.

Jerome J. Grothues, BBA, Spring Branch, Texas, is controller at M.G. Building Materials Inc. in San Antonio.

Lawrence J. Krema, BA, Chicago, is director, human resources, at NEC Technologies.

Mireya V. Mata, BA, MA 85, Frankfurt, Germany, is a member of the transition team for Hughes Training Inc., establishing a training office for General Motors Europe.

Doyle Maynard, MA, Navasota, Texas, is pastor at the Church of Christ.

Stella C. Acosta Roberts, BBA, Tulsa, Okla., is a payroll manager at American Airlines.

Corinne Vela Zapata, BBA, San Antonio, is a member of the steering committee for the 1995-96 Leadership San Antonio class.

1983

Edmund Cavazas III, BA, Louisville, Ky., is network medical director, psychiatric services, at Rivendell of Kentucky Psychiatric Hospitals/Clinics in Nashville.

Militza Hauser Cunningham, BA, San Antonio, is vice president at the Coppini Academy of Fine Arts.

Jorge A. Garza, BS, Harlingen, Texas, is a staff physician at Su Clinica Familiar.

Nora Olvera Garza, BS, Harlingen, Texas, is a staff physician and clinic team leader at Su Clinica Familiar.

Michele A. Kempf Johnson, BA, Castroville, Texas, is a teacher with the St. Louis Catholic School.

Armando H. Santos, BBA, MS 86, MBA 89, Grapevine, Texas, is a business application manager at Search Capital, Dallas.

1984

Arnold Huskins, BS, San Antonio, is an optometrist at Lackland Air Force Base. He was promoted to major in September.

Malcolm Myler, BBA, Houston, is a marketing representative at QIV Systems Inc.

Nicki Beaudoin Prevou, BA, Arlington, Texas, is the director of the Marianist LIFE Alumni Project.

David H. Zimmermann, BA, Amarillo, Texas, received a doctorate in English from the University of North Texas. He is an instructor at Amarillo College.

1985

Mary E. Gilsdorf Armstrong, BA, Austin, attended the 1995 LaLeche League International Conference in Chicago. She is an accredited LaLeche League leader.

David Blackburn, JD, Killeen, Texas, is an assistant city manager and city attorney with the City of Killeen.

Victor F. Bolanos, BBA, San Antonio, is an account executive at CSC Credit Services.

Karen Crouch, JD, San Antonio, is a judge at Bexar County Court of Law No. 8.

Larry D. Dudek, BA, Elizabeth, N.J., is an opening specialist manager at Dunkin Donuts International, New York and New Jersey area.

Please tear along perforated line, fold and tape.

Fold along this line.

PLACE
STAMP
HERE

ST. MARY'S UNIVERSITY
PUBLIC RELATIONS
ONE CAMINO SANTA MARIA
SAN ANTONIO, TEXAS 78228-8575

To form flap, fold along this line and tape securely to seal.

Tape securely to seal.

Eleanor E. Mendlovitz Duke, BA, San Antonio, is an internal medicine physician at Gonzaba Medical Group.

Susan B. Ervin, BA, MA 90, Coconut Grove, Fla., is director, investor relations, at Stearling Healthcare Group Corp. in Coral Gables.

Christine McCormick Lowak, BA, San Antonio, is a teacher at Churchhill High School.

Thomas M. Pickford Jr., JD, Houston, is an attorney at Hoover, Bax and Slovacek, L.L.P.

Karen O. Raleigh, JD, San Antonio, is an attorney at Raleigh and White.

1986

Leticia Morales Bissaro, BA, San Antonio, is an associate director of Evening Studies at St. Mary's University.

Jaime R. Gomez, BA, Houston, is participating in a colon and rectal surgery fellowship at the University of Texas at Houston Medical School. He completed a general surgery residency at Texas Tech El Paso.

William A. Green, JD, Lexington, S.C., is an associate minister at Saxe Gotha Presbyterian Church. He received a master of divinity degree in May from Union Theological Seminary in Virginia.

John F. Kozlovsky, BS, San Antonio, is an ophthalmologist at Eye Associates of San Antonio.

Lisa Uribe Kozlovsky, BA, San Antonio, is an instructor at San Antonio College.

Alfred F. Lopez, BA, MA 93, San Antonio, is a receivables clerk at St. Mary's University.

Dennis M. Mailman, BBA, Houston, is a computer consultant at MicroTeach, a computer consulting and training company.

Kenneth S. Saks, BBA, JD 89, San Antonio, is an attorney at the Law Offices of Oliva and Saks.

1987

Eric R. Barron, BS, Brownsville, Texas, is an ophthalmologist at the Office of Jacob S. Plotkin, M.D.

Eusebio H. Contreras, BA, Laredo, is a geologist at Trinity Testing Laboratories Inc.

Angel Vitelio Delgado, BS, San Antonio, is a civilian immunologist for the burn center at the U.S. Army Institute of Surgical Research, Brook Army Medical Center.

Pamela E. Humphrey Lee, BA, San Antonio, is a teacher with Northside Independent School District.

Mary A. Wolffe Lippoldt, BA, MA 91, San Antonio, is a coordinator of psychological testing at Deer Oaks Mental Health Associates.

Cynthia D. Evans Nelson, BA, Austin, is an account representative at Ross Products Division, Abbott Laboratories.

Javier F. Oliva, MS, JD 91, San Antonio, is an attorney at the Law Offices of Oliva and Saks.



**NICKI BEAUDOIN
PREVOU, BA 84**

The Marianist family became a part of Nicki's life while she was at high school and at Marianist LIFE Camp at Tecaboca — a natural path to St.

Mary's University. After graduation, she worked in public relations and development at Our Lady of the Pillar Retreat Center, and while there, she met her husband, Kevin. They have three sons: Timothy, 6, and twins Paul and Jacob, 3.

"The Marianists are doing interesting programs with young adults and young families," she says. "They have a unique charisma; they are a religious order that believes lay people should have a role in the church. That is freeing and exciting to young adults. Further, Marianists encourage creativity and progressive spirituality, making it difficult to leave the Marianist atmosphere and return to a 'normal' parish. LIFE Camp is a bridge that empowers laity and encourages community."

St. Mary's alumni are rising to leadership in lay ministries in San Antonio, Houston and St. Louis. Nicki's goals include broadening their scope with workshops, retreats and opportunities to participate in Christian Life Communities (CLCs). "A lot of people want to connect with the Marianist experience," she says. "I am happy to provide information on the LIFE Camp and LIFE Alumni Project."

1988

Deborah L. Cardinal, MA, College Station, Texas, is enrolled in the diplomatic history doctoral program at Texas A&M University. She was an archivist at the Bush Presidential Library.

Camila Chapa, BBA, San Antonio, is a perishables director at H.E. Butt Grocery Co., H.E.B. Marketplace. She received an MBA from Texas A&M International University in May.

Angelita M. Serbantez Garcia, BA, San Antonio, is a teacher with the Schertz, Cibolo, Universal City Independent School District.

John D. Gellhausen, BBA, Lakewood, Ohio, is vice president of mergers and acquisitions at National City Corp. of Cleveland.

Patsy A. Primera Grice, BBA, Arlington, Texas, is a bank examiner at the Federal Deposit Insurance Corp.

Richard J. Guajardo, BS, San Antonio, is a research associate at the University of Texas at San Antonio.

Bridget A. McNeely, BA, Antioch, Tenn., is a retail sales representative at Ross Products Division, Abbott Laboratories.

Candice M. Ritch, BA, MA 90, San Antonio, is a psychological associate at Deer Oaks Mental Health Associates.

Monica Herrera Rivera, BA, Plano, Texas, is attending Southwest Medical School with a fellowship in nephrology.

Catherine Torres Stahl, BA, JD 93, San Antonio, is an assistant criminal district attorney in Bexar County.

Karen A. Schroeder-Tabary, BBA, JD 93, Dallas, is a corporate attorney at Lone Star Gas Co.

Ricardo J. Villarreal, BBA, San Antonio, is a reimbursement auditor at Blue Cross and Blue Shield of Texas.

Adriana Majul Virgen, BA, San Antonio, is a partner with the law firm of Virgen and Virgen.

Ronald T. Wilson, MBA, San Antonio, is a teacher with the Judson Independent School District.

1989

Cynthia Cerda Arevalos, BA, San Antonio, is co-owner and accountant at American Tile Co.

Jack Civa, BBA, Waco, Texas, is an account manager at Ryder Truck Leasing and Services.

Sandra Chavez Contreras, BBA, Waco, Texas, is a senior tax auditor at the Texas State Comptroller's Office.

Kay A. Elsasser, JD, San Antonio, is an attorney at Baucum and Steed.

Mary Margaret Rangel Garcia, BA, San Antonio, is a family counselor at The Patrician Movement.

Jeffrey A. Goldberg, JD, San Antonio, is a partner with Goldberg and Goldberg, L.L.P. He is board certified in labor and employment law.

Robert Henry, BBA, San Antonio, is general manager at Carpet Max.

Margaret M. Janeczek, BA, MA 95, Dallas, is the bishop's liaison for special projects at the Diocese of Dallas.

James S. Kiburz, BBA, St. Louis, is an account executive and bond representative at Aetna Casualty and Surety Co.

Robert J. Malone, BBA, Alton, Ill., is an attorney at Suelthaus and Walsh in St. Louis. He received a combined MBA/JD degree from St. Louis University in May.

Deborah W. McMurrey, JD, Dallas, is an attorney in private practice.

Chris David Nolte, BS, San Antonio, is manager, central region, at Takeda USA Inc.

Kimberly Reynolds O'Connor, BS, Cypress, Texas, is a compensation and benefits administrator/analyst at COMPAQ Computer Corp.

Joseph S. Olea, BA, San Antonio, is a dentist at Kellum Medical Clinic.

Stephen B. Persyn, BA, San Antonio, is a corporate safety coordinator, South Texas division, H. E. Butt Grocery Co.

Gregory M. Ruhnke, JD, Boerne, Texas, is an attorney at Taylor and Ruhnke.

Lourdes Urbina Saks, BA, San Antonio, is self-employed as a Spanish instructor.

David W. Sommer, BBA, Athens, Ga., is an assistant professor of insurance and risk management at the University of Georgia.

Paul C. Stahl, BBA, San Antonio, is a design and training specialist at Dynatouch Corp.

Alberto Virgen, BBA, San Antonio, is a partner with the law firm of Virgen and Virgen.

1990

Amanda L. Barrella, BS, Overland Park, Kan., is an anesthesiology resident at the University of Missouri, Kansas City.

Bradley P. Bengston, JD, Austin, is an attorney at Mullen, MacInnes and Redding.

Matthew D. Bradley, BBA, JD 93, San Antonio, is an attorney at Gresham, Davis, Gregory, Worthy and Moore.

Cathy Escamilla Browne, BA, Del Rio, Texas, is a senior claim representative at State Farm Insurance Co.

David E. Browne, BBA, Del Rio, Texas, is a senior claim representative at State Farm Insurance Co.

Christy A. Bradley Colebank, MA, New Braunfels, Texas, is director of Christian Education at Wimberley United Methodist Church.

Gerardo B. Flores, BBA, Cincinnati, Ohio, is a financial analyst at Proctor and Gamble. He sang at Carnegie Hall in May with the Cincinnati May Festival Chorus.

James C. Harp, BA, El Campo, Texas, is a teacher and coach at Terry High School in Rosenberg.

Marisela Salinas Jacaman, BBA, Laredo, is an assistant public defender in Webb County.

Kelly A. Koval, BA, San Antonio, is the owner of Texas Athletics Inc., a sports uniform and T-shirt retailer.

Yolanda Lopez, BA, Brownsville, Texas, is a graduate student at the University of Texas Pan American in Edinburg. She completed an internship provided by the Hispanic Association of Colleges and Universities at the Office of Drug Enforcement and Program Compliance, U.S. Department of Transportation, Washington, D.C.

Roy M. Mendoza, BBA, San Antonio, is a claims specialist on the corporate catastrophe team at State Farm Insurance.

Alex M. Miller, BA, San Antonio, is an associate attorney at Plunkett, Gibson and Allen.

James M. O'Connor, BS, Cypress, Texas, is a regional environmental coordinator at Texas Eastern Products Pipeline in Baytown.



GERARDO B. FLORES, BBA 90

How does a bachelor's degree in international business lead to a performance at Carnegie Hall? When you're Gerry

Flores, business and singing are two of life's priorities. Says Gerry, "I work long hours and love music, so singing makes it nice to do something different." He has the most fun singing at the weddings of classmates, and classmates are something Gerry has a lot of.

Gerry earned a BBA in international business at St. Mary's while on a music scholarship. He then received an MBA from the University of Rochester, singing in the Eastman Chorale at the Eastman School of Music. After working as an intern at Proctor & Gamble, he joined the firm upon graduation in 1992. Also at that time, he began to sing with the Cincinnati Symphony and Cincinnati Pops.

A job transfer in September moved Gerry to the Proctor & Gamble manufacturing plant in Sherman, Texas, where he is the plant finance manager (a position similar to comptroller). Gerry plans to participate in musical theater, audition for the Dallas Symphony and continue singing with a local church choir.

Cynthia M. Patterson, BA, Cotulla, Texas, is a teacher at Frank Newman Elementary School.

Cynthia L. Pena, BBA, San Antonio, is an express adjuster at USAA.

Richard Perez, BA, Clovis, N.M., is the dental program director at La Casa De Buena Salud Inc. in Portales.

John J. Phillips, BBA, Arlington, Texas, is general ledger manager at Cash America Management.

Luis J. Saenz, BBA, San Antonio, is regional director for U.S. Sen. Phil Gramm's South Texas office. He is a former aide to U.S. Rep. Henry Bonilla.

Gilberto H. Santos, BBA, Live Oak, Texas, is a senior claims representative at State Farm Insurance in San Antonio.

Virginia L. Spill, BA, San Antonio, is a reservation sales agent at American Airlines.

Joseph M. Tran, BA, Chalmette, La., is an associate priest at St. Mark's Parish.

Jon Turner, BBA, Dallas, is regional director at the Dallas-Fort Worth division of Tetco Inc.

1991

Lucinda Campos Agueros, BA, San Antonio, is a teacher with the San Antonio Independent School District. She earned an MS in educational administration from Texas A&M University in December 1994.

Iris F. Arredondo, BA, San Antonio, is a project geologist at Operational Technologies Corp., an environmental consulting firm.

Katherine S. Sodek Bailey, BA, San Antonio, is a manager at the Bombay Company retail store.

Suzanne E. Sholar Barron, BA, San Antonio, is a teacher with Southwest Independent School District.

Terri O'Shea Cook, BA, Houston, is a technical assistant in estate planning at Cigna Financial Advisors.

Don A. Davis, MA, San Antonio, is a clinician at Family Service Association.

Bertha Duran, BA, Austin, is an adult probation officer with the Travis County Community Supervision and Corrections Unit. She is president-elect and secretary of the Austin Capital Area Alumni Chapter for St. Mary's University.

Margaret M. Fent, JD, San Antonio, is an assistant criminal district attorney at the Bexar County District Attorney's Office.

John C. Flores, BBA, San Antonio, is an account representative at IBM Corp.

Robert S. Garcia, BBA, Dunedin, Fla., is a civic market field representative at Nielson Media Research in the Tampa area.

Mark P. Haby, BA, JD 95, Castroville, Texas, is an attorney in private practice in San Antonio.

Noreen Huante, MBA, Helotes, Texas, is a marketing specialist at Clarke American in San Antonio.

Anita Kushwaha Khetan, BS, Pittsburgh, Pa., is a physician at Allegheny General Hospital.

Pete Kleffner, BBA, San Antonio, was promoted to division controller at Fairchild Aircraft Services Division.

Christina Quesada Mayne, BA, Rio Grande City, Texas, is a teacher at Immaculate Conception School.

Timothy S. Myer, JD, Austin, is an attorney in private practice.

Janie DeLuna Remling, BBA, MBA 95, San Antonio, is an administrator at Dee Howard Co.

Darrin O'Keefe Sublet, BA, Humble, Texas, is employed at Agency Rent-a-Car.

Nancy Steptve Sublet, BA, Humble, Texas, is an English teacher at Northwood Middle School in Houston.

1992

Deborah A. Alvarez, BBA, San Antonio, is an admissions counselor at St. Mary's University.

Consuelo Arredondo, BS, San Antonio, is a medical technologist at Methodist Hospital.

Richard Becker, MBA, Columbia, Mo., is a plant accountant at 3M Corp.

David P. Dougherty, BA, San Antonio, is the bookstore manager at Central Catholic High School.

Gary L. Durbon, BA, San Antonio, is the head men's varsity basketball coach at South San High School.

Edmundo Garcia, BBA, San Antonio, is a telecommunications supervisor at United Parcel Service.

Richard A. Gonzales, JD, San Antonio, is a staff attorney at the 4th Court of Appeals.

Jon M. Hogg, JD, San Angelo, Texas, was appointed chairman of the Tom Green County Democratic Party. He is an attorney at Ratliff and Edwards.

Cynthia K. Reichert Jungman, BS, Snook, Texas, is attending veterinary school at Texas A & M University.

Cynthia A. Padilla LaFuente, BA, San Antonio, is a student at Incarnate Word College.

Julie D. Montesdeoca, BA, San Antonio, is the marketing coordinator at the Fiesta San Antonio Commission.

Chidi Longinus Nwameme, MS, Austin, is a McDonald's manager.

Linda Rodriguez Ortegón, BA, San Antonio, is a teacher and coach at Memorial High School in the Edgewood Independent School District.

Lisa A. Ray, BBA, Irving, Texas, is a senior auditor at BancOne Corp.

Kara M. Karam Schultz, BBA, El Paso, Texas, is a teacher at Jesus Chapel School.

Norma R. Villa, BS, Irving, Texas, is a professional relations representative at Delta Dental of Texas Insurance Co.

1993

Myrthala C. Alejo, BA, San Antonio, is a legal secretary and receptionist at the Federal Public Defenders Office.

Jennifer F. Sheppard Badger, JD, San Antonio, is an assistant district attorney at the Bexar County Criminal District Attorney's Office.

Michael Barron, BBA, San Antonio, is a payroll specialist at Kraft Foods.

Celeste A. Brown, JD, San Antonio, is an attorney in private practice.

Paige Clawson, BA, San Antonio, is a teacher and coach at Southwest High School.

Annette E. Crixell Camacho, BA, Brownsville, Texas, is a pre-kindergarten teacher at Vermillion Elementary.

David L. Cardenas, MPA, Irving, is a senior management analyst for the City of Irving.

Kimberly Y. Coy, MA, Alexandria, Va., is a legislative assistant at the office of U.S. Rep. Henry B. Gonzalez in Washington, D.C.

Michael A. Fernandez, BBA, Irvine, Calif., is an account supervisor at Casanova Pendrill Publicidad Inc., assigned to the Coors Light Hispanic advertising program.

Adriana E. Gonzalez, BA, MPA 95, Arlington, Va., is program and development director at the National Hispana Leadership Institute.

Janette C. Henry, BBA, San Antonio, is a manager at Robbie Casey's.

RUDY MARTINEZ, BBA 71

"On the go" is perhaps the best way to describe Rudy Martinez, originally from San Antonio, now living in Arlington, Texas. A four-year letterman in baseball while attending St. Mary's, Rudy coached his son's baseball team to a national championship this summer in the 14-year-old-and-under division of the American Amateur Baseball Congress.

"Playing a tough schedule of opponents—the big schools like Notre Dame, Minnesota and Nebraska," stand out in Rudy's memories of St. Mary's.

Community relations manager for Southwestern Bell Telephone in Hurst, Texas, a company he's been with since graduation, he works closely with the city of Arlington and is a board member of the city's convention and visitors' bureau. The mayor appointed Rudy to the host committee for the All-Star Major League Baseball game in July.

A converted Dallasite, Rudy is a big Cowboys fan and enthusiastic entrepreneur of Mexican food at the Texas State Fair, a venture he originally shared with alumnus Victor Barrientes (BA 74).

Ralph J. Hernandez, BBA, San Antonio, is an export manager at Columbia Industries. He is enrolled in the MBA program at the University of Texas at San Antonio.

Karin N. Kiser, BA, Chicago, Ill., is a manager, international sales and marketing, at Dearborn Publishing Group.

Frank L. Leffingwell, JD, Round Rock, Texas, is an assistant municipal judge and an attorney at McNery and Voelker.

Kelly S. McNeill, BA, San Antonio, is an account representative at Federal Express.

Ann White Medellin, BA, Carrollton, Texas, is a teacher at Liberty Middle School in Richardson.

Stephanie A. Monroe, BA, Cincinnati, Ohio, is the early childhood child-care coordinator at the Redwood Center, a program affiliated with the Marianist Voluntary Service Community.

Ina Ossorio Perales, BS, San Antonio, is a science teacher with Northside Independent School District.

Michael K. Phillips, JD, San Antonio, is an attorney in private practice.

G. Melissa Villagran Pinckard, BA, Austin, is a property coordinator at Texas First Properties.

Roel Roy Rodriguez Jr., BA, Cotulla, Texas, is the chief juvenile probation officer for LaSalle County.

Elisabeth T. Filut Villarreal, BA, San Antonio, is a residential child-care licensing representative with the Texas Department of Protective and Regulatory Services.

Christopher L. White, JD, San Antonio, is an attorney at Raleigh and White.

Keith W. Wildes, MPA, Austin, is president of the Austin Capital Area Alumni Chapter of St. Mary's University. He is employed by the City of Austin and is in the medical services corps of the U.S. Air Force Reserves.

1994

Alexander Camacho, BBA, Brownsville, Texas, is an assistant financial consultant at Merrill Lynch.

Carla A. Cummings, BBA, San Antonio, is a marketing coordinator at Cellular One.

Estala B. Elizalde, BBA, San Antonio, is a fund accountant at United Services Advisors.

Ernest Espinoza, BBA, Las Vegas, Nev., is a personnel management specialist at Nellis Air Force Base.

R. Carlos Garcia, JD, San Antonio, is an attorney at the Law Offices of Oliva and Saks.

Sonia E. Green, BA, San Antonio, is a research manager at the Southwest Voter Research Institute.

Yvonne L. Habermann, BBA, North Beach, Md., is a budget analyst at Andrews Air Force Base. She is a certified public accountant.

Lisa Y. Aceves Hayes, BA, Austin, is a law student at the University of Texas.

Wendy Pulley Kowalik, BBA, San Antonio, is marketing director at Oliphint Roberts Becknell.

Lelia Lutich Lerece, BA, Fabens, Texas, is secretary at Lutich Farms Inc.

Diana Macias, BBA, San Antonio, is an assistant vice president and personal banking officer at Broadway National Bank.

Sylvia Manzano, BA, San Antonio, is an admissions counselor at St. Mary's University.

Jo Lynn Sparkman Milford, MBA, Converse, Texas, is office manager at Dot Metal Products in San Antonio.

Monica Lujan Morales, BBA, San Antonio, is an assistant underwriter at Go Pro Underwriting Managers Inc.

Dana B. French Muhlbarg, MA, San Antonio, is a therapist at Jewish Family Service.

Mark Pinckard, BA, Austin, is a writer, constituent services, Office of the Governor.

Suzanne Moore Pruitt, PhD, Helotes, Texas, is an assistant professor, counseling and guidance, division of education, University of Texas at San Antonio. She also has a private practice in counseling.

Robert C. Ramirez III, BBA, San Antonio, is vice president at B & F Finance Corp.

Eliseo Rico III, BA, San Antonio, is a branch representative at Beneficial Texas Inc.

James M. Ross, BA, El Paso, is a student at Texas Tech Medical School.

Bruce D. Salmon, BA, Austin, is a teacher and coach in Pflugerville.

Bertha B. Saucedo, BA, San Antonio, is a teacher at Christa McAuliffe Middle School, Southwest Independent School District.

Nichole M. Sheppard, BA, Uvalde, Texas, is a probation officer with the 38th Judicial District, Uvalde.

Gerardo Soto, BA, San Antonio, is a teacher and coach at South San High School.

Scott A. Stolle, JD, San Antonio, is an attorney at Hohman, Georges and Gehring.

Anju M. Thomas, BBA, Dallas, is an analyst in revenue management at Southwest Airlines Co.

Imelda Cano Trevino, BA, San Antonio, is enrolled in graduate school at the University of Texas at San Antonio.

Lisa M. Vajdos, BA, San Antonio, is a teacher at Elolf Elementary in the Judson Independent School District.

Eunice Vargas, BA, San Antonio, is a membership representative at A.C. Nielson Media Research (better known as the Nielson TV Rating Co.).

Angela M. Velazquez, BBA, San Antonio, is a loan officer at Beneficial of Texas Inc.

Monica M. Villarreal, BA, San Antonio, is a bilingual teacher with the Edgewood Independent School District.

Kimberly S. Witte, BA, San Antonio, is a physical education teacher and coach at Eisenhower Middle School, Northeast Independent School District.

1995

Eduardo O. Cantu, BA, Austin, is enrolled in law school at the University of Texas, Austin.

Chris M. Gallegos, BBA, San Antonio, is a contemporary marketing representative with Anheuser Busch.

Lisa D. Harding, JD, San Antonio, is an associate attorney at the Law Offices of Christopher J. Weber.

Shawn A. Hayes, BBA, Austin, is beverage manager at the Red Lion Hotel.

Mary A. Highstone Hurt, MS, San Antonio, is a programmer analyst at USAA.

Sunny Jansma, JD, San Antonio, is an associate attorney at Crofts, Callaway and Jefferson.

Brian C. Kies, BS, San Antonio, is a global communications customer service representative at AT&T.

Kathleen A. McCullough, BBA, Dallas, is an assistant account coordinator at Sedgwick James of Texas. Her article, "Catastrophe Insurance Futures," received a 1995 Risk Insurance Management Society Research Award and was published in "Risk Management" August 1995 issue.

Elizabeth J. Milvo, BA, San Antonio, is enrolled in the master of arts in counseling program at St. Mary's University.

NORA OLVERA GARZA, M.D. (BS 83) and JORGE ALBERTO GARZA, M.D. (BS 83)

Nora, an M.D. graduate of the University of Texas Health Science Center at Houston, and Jorge, an M.D. graduate of the Baylor College of Medicine, practice medicine in Harlingen, Texas.

Sharing an undergraduate class at St. Mary's in their senior year brought them together. "Working at a public health clinic for the indigent of the southernmost part of Texas for five years has been very rewarding," Nora says. "I often feel the best medicine I give comes from the rich values I learned at St. Mary's." Echoing his wife's sentiments, Jorge says, "There's a lot of value in assisting those who need medical care. Most of our patients are below the poverty level, uninsured or covered by Medicaid. Nora and I are first-generation, bilingual Americans."

They are the parents of two children, Sarah, 7, and Eleanor, 5. The Garzas see their work as not only clinical, but also educational. Reports Jorge, "We deal with a lot of ingrained ways of thinking, so it's important to educate our patients in a way that is not culturally offensive." Many patients, he says, refer to Nora as "mi hija" (my daughter). The Garzas also participate in a community program that encourages high school students to pursue medical careers.

Cynthia A. Reyna, BBA, Lytle, Texas, is a U.S. Army second lieutenant in the Signal Corps at Fort Wainwright, Alaska.

Edward M. Rizzolo, MBA, San Antonio, is an application systems manager at USAA.

Daniel A. Sanchez, BA, Austin, is enrolled in law school at the University of Texas, Austin.

David A. Sanchez, BA, Austin, is enrolled in law school at the University of Texas, Austin.

Phil Taylor, BBA, San Antonio, is an assistant director at the Texas office of the Mexico State Government of Tamaulipas.

Kimberly Williams, BA, San Antonio, is an assistant director at the John Casablanco Modeling and Career Center.

MARRIAGES

Carol A. Leonard, BA 79, to Curtis Gunter, March 25, 1995, in Neptune, N.J.

Mark H. Stroehrer, JD 81, to Susan Jane Anderson, June 10, 1995, in Fredericksburg, Texas.

Michele Ann Kempf, BA 83, to Buckner Johnson, June 2, 1995, in Castroville, Texas.

Victor F. Bolanos, BBA 85, to Mary Elizabeth Dunn, Sept. 2, 1995, in San Antonio.

Maher J. Massis, BA 85, to Arwa Leineh, July 2, 1995, in Amman, Jordan.

Christine McCormick, BA 85, to William Mark Lowak, July 22, 1995, in San Antonio.

Karen O. Raleigh, JD 85, to Christopher L. White, JD 93, July 24, 1995, in Aspen, Colo.

Pamela C. Alsop, BBA 86, to Gregory Bowen, March 17, 1995, in Nashville, Tenn.

Eusebio H. Contreras IV, BA 87, to Clara C. Cruz, June 30, 1995, in Laredo.

Rossana Garcia, BBA 87, MBA 89, to Bill Barouski, April 29, 1994, in Clarendon Hills, Ill.

Darin Lippoldt, BBA 87, MBA/JD 95, to Mary Allison Wolfe, BA 89, MA 91, Sept. 23, 1995, in Fort Worth, Texas.

Richard J. Guajardo, BS 88, to Christine C. Lopez, May 20, 1995, in San Antonio.

Monica Herrera, BA 88, to Jose M. Rivera, April 29, 1995, in San Antonio.

Catherine Torres, BA 88, JD 93, to Paul Christopher Stahl, BBA 89, Aug. 20, 1994, in San Antonio.

Jack Civa, BBA 89, to Wendy Warden, April 21, 1995, in Dallas.

Bradley Prescott Bengston, JD 90, to Jennifer Ann Schriber, July 22, 1995, in Austin.

James Charles Harp, BA 90, to Brenda Kay Balcar, July 1, 1995, in El Campo, Texas.

Marisela Salinas, BBA 90, to Emilio N. Jacaman, June 3, 1995, in Laredo.

Warren Schulz, BBA 90, to Dana Taylor, Sept. 2, 1995, in Richardson, Texas.

Jon Turner, BBA 90, to Shannon Elizabeth Miller, May 6, 1995, in San Antonio.

Anita Kushwaha, BS 91, to Rainer Khetan, June 10, 1995, in Pittsburg.

Norman J. Morales, BS 91, to Monica Lujan, BBA 94, May 27, 1995, in San Antonio.

Timothy Sterling Myer, JD 91, to Melissa Marie Petrek, June 10, 1995, in Houston.

Christina Quesada, BA 91, to Alan A. Mayne, July 8, 1995, in El Paso.

Terri O'Shea, BA 91, to John Cook, Aug. 19, 1995, in Houston.

Suzanne Elizabeth Sholar, BA 91, to Michael Barron, BBA 93, July 8, 1995, in San Antonio.

Katherine Swords Sodek, BA 91, to Michael Bailey, Sept. 16, 1995, in San Antonio.

Kara M. Karam, BBA 92, to Kenneth C. Schultz, Sept. 1, 1995, in El Paso.

Cynthia Padilla, BA 92, to Charles Stephen LaFuente, July 8, 1995, in San Antonio.

Cynthia Kay Reichert, BS 92, to Christopher Jungman, Dec. 23, 1994, in Snook, Texas.

Kathleen T. Aguilar, BA 94, to James A. Rodriguez, BA 93, July 1, 1995, in Santa Fe, N.M.

Elisabeth Therese Filut, BA 93, to John A. Villarreal, March 11, 1995, in San Antonio.

Frank Lloyd Leffingwell, JD 93, to Bethany Anne Bradley, June 10, 1995, in Round Rock, Texas.

Ina Ossorio, BS 93, to Troy Perales, Aug. 4, 1995, in San Antonio.

Jennifer F. Sheppard, JD 93, to David C. Badger, April 29, 1995, in San Antonio.

Gloria Melissa Villagran, BA 93, to Mark Pinckard, BA 94, July 22, 1995, in San Antonio.

Ann M. White, BA 93, to Marcus Medellin, June 10, 1995, in San Antonio.

Lisa Yvette Aceves, BA 94, to Shawn Allen Hayes, BBA 95, Aug. 5, 1995, in Austin.

May-Jelyn Balbin, BBA 94, to David Wainright, Dec. 26, 1994, in Jacksonville, Fla.

Imelda Cano, BA 94, to Orlando Trevino, July 8, 1995, in Harlingen, Texas.

Lisa Dianne Crowe, MA 94, to Douglas Alan Curtis, June 24, 1995, in San Antonio.

Wendy Pulley, BBA 94, to Alfié Kowalik, April 29, 1995, in Falls City, Texas.

Sonya Maria Mora, BA 95, to Enrique Aleman Jr., July 1, 1995, in San Antonio.

James Mathew Ross, BA 95, to Melissa Elaine Muniz, May 27, 1995, in El Paso.

BIRTHS

Gabriela Marie to Sylvia Gonzales and **John P. Bogran, BBA 81, JD 84**, San Antonio, Nov. 21, 1994.

Kelly Maureen to Christine and **Joseph A. Temporal, BA 81**, Columbia, Mo., July 7, 1995.

Amanda Paige to **Donna Koogle Diaz, BBA 82**, and Rick Diaz, Arvada, Colo., May 29, 1995.

Brendan David to **Stella Acosta Roberts, BBA 82**, and David Roberts, **BBA 81**, Tulsa, Okla., March 23, 1995.

Emily Claire to **Anne M. Hart Cavazos, BBA 83**, and Dan Cavazos, Universal City, Texas, June 6, 1995.

Patrick Scott to **Mary Gilsdorf Armstrong, BA 85**, and Scott Armstrong, Austin, March 17, 1995.

Jacob Travis to **Pamela Humphrey Lee, BA 87**, and Jason Lee, San Antonio, Jan. 1, 1995.

Isabella Rose to **Michele Morales Olea, BA 88, MS 91**, and **Joseph S. Olea, BA 89**, San Antonio, May 23, 1995.

Marissa Nicole to **Kathleen Schaefer Phillips, BA 88**, and Tim Phillips, St. Louis, July 14, 1995.

Tiviana Cerda to **Cynthia Cerda Arevalos, BA 89**, and John Arevalos, San Antonio, Aug. 7, 1995.

Adam Richard to **Sandra Chavez Contreras, BBA 89**, and Richard Contreras, Waco, Texas, Oct. 27, 1994.

Miranda Celia to **Mary Margaret Rangel Garcia, BA 89**, and Juan L. Garcia Jr., San Antonio, Sept. 8, 1994.

Carolyn Ann to **Linda A. Ortega, BBA 90**, and **Richard A. Ortega, BBA 90**, Sacramento, Calif., Oct. 2, 1994.

Sydney Krystel to Kamala and **Richard Perez, BA 90**, Clovis, N.M., Aug. 7, 1994.

Stephen Gilbert to **Veronica Garcia, BBA 91**, and **Gilberto H. Santos, BBA 90**, San Antonio, Dec. 18, 1994.

Darnisha to **Nancy Steptve Sublet, BA 91**, and **Darrin O'Keefe Sublet, BA 91**, Houston, July 6, 1994.

Robert George to **Becki Gueldner Henry, BBA 92**, and **Robert Henry II, BBA 89**, San Antonio, July 23, 1995.

Phillip Russell to **Cynthia Reichert Jungman, BS 92**, and Christopher Jungman, Snook, Texas, June 11, 1995.

Ryan Alexander to **Linda Rodriguez Ortegon, BA 92**, and Ralph Ortegon Jr., San Antonio, July 5, 1995.

Mark Christian to **Melissa and Mark C. Roberts II, JD 93**, Fort Worth, Texas, June 11, 1995.

Twins Emily Jordan and Lainey Grace to **Dana B. French Muhlberg, MA 94**, and Bruce Muhlberg, San Antonio, March 17, 1995.

IN MEMORIAM

Frank J. Keller, class of 32, Castroville, Texas, died June 23, 1995.

James Hogg Rogers, class of 33, Austin, died August 24, 1995.

Thelma Higdon Fitzwater, BA 34, San Antonio, died May 27, 1995.

Joseph Brandmeier, BA 36, St. Louis, died April 3, 1995.

Francis C. Sullivan, JD 36, San Antonio, died July 8, 1995.

Francis J. Rounds, BA 38, St. Louis, died in December 1994.

Vincent S. Margerum, BA 39, Belleville, Ill., died April 14, 1995.

Charles A. Reiter, BA 43, Fredericksburg, Texas, died June 15, 1995.

Earl C. Rabke, class of 44, San Antonio, died July 15, 1995.

Walter F. Nussbaum, class of 45, Amarillo, Texas, died July 6, 1995.

Ivan G. Nation, BSC 47, Garland, Texas, died August 16, 1995.

Cruz U. Tijerina, BA 51, JD 57, McAllen, Texas, died July 1, 1995.

William W. Wendtland, class of 51, Shiner, Texas, died May 23, 1995.

Thomas A. Pair, class of 52, San Antonio, died in March 1994.

Albert R. Sawyer Jr., BBA 54, San Antonio, died June 13, 1995.

William J. Keefe, class of 55, Orange, Calif., died Sept. 25, 1995.

Louis M. Ponce Jr., BS 63, San Antonio, died in September 1994.

Herman R. Junco Jr., BA 64, LaVernia, Texas, died July 19, 1994.

James G. Baulch, class of 67, Houston, died April 26, 1994.

Anita F. Steele, BA 70, Austin, died June 6, 1995.

Douglas Williams, BBA 70, Memphis, Tenn., died Oct. 12, 1995.

Sol E. Arledge, JD 71, Del Rio, Texas, died June 2, 1995.

Donald J. Brown, BA 73, Wimberley, Texas, died May 26, 1995.

Bette J. Wise, MA 90, San Antonio, died August 17, 1995.

Correction

Brig. Gen. **Connie L. Slewitzke (Ret.), MA '76**, Annandale, Va., advises that her name was omitted from the summer Gold & Blue listing of high-ranking military alumni.

*"Our work is great; it is magnificent.
It is universal because we are the missionaries of Mary.
She says to us, 'Do whatever He tells you.'
Yes, we are all missionaries."*

*The Rev. William Joseph Chaminade,
Founder of the Society of Mary (the Marianists).*

*F*or 143
years, Father
Chaminade's
teachings have
inspired the life and
mission of St. Mary's
University.

Your gift to the
Annual Fund will
help us to continue
sharing his spirit of
faith and service with
our students.



ST. MARY'S UNIVERSITY
ONE CAMINO SANTA MARIA
SAN ANTONIO, TEXAS 78228-8575

NON-PROFIT ORGANIZATION
U.S. POSTAGE
PAID
SAN ANTONIO, TEXAS
PERMIT NO. 787