



ST. MARY'S  
UNIVERSITY

## Digital Commons at St. Mary's University

---

Gold & Blue

Gold and Blue

---

Fall 1987

### Gold & Blue, Fall 1987

St. Mary's University- San Antonio, Texas

Follow this and additional works at: <https://commons.stmarytx.edu/goldblue>

---

#### Recommended Citation

St. Mary's University- San Antonio, Texas, "Gold & Blue, Fall 1987" (1987). *Gold & Blue*. 11.  
<https://commons.stmarytx.edu/goldblue/11>

This Book is brought to you for free and open access by the Gold and Blue at Digital Commons at St. Mary's University. It has been accepted for inclusion in Gold & Blue by an authorized administrator of Digital Commons at St. Mary's University. For more information, please contact [egoode@stmarytx.edu](mailto:egoode@stmarytx.edu), [sfowler@stmarytx.edu](mailto:sfowler@stmarytx.edu).

# Gold & Blue



**Once Upon a Time  
at St. Mary's**

**The President  
Reports**

**St. Mary's University**

1.



2.



3.



### Cover

“It was an incredible experience—impossible to put into words,” says the Rev. Virgil Elizondo (B.S. '57) of his meeting with Pope John Paul II. Our cover commemorates the pope's September visit to San Antonio, that once-in-a-lifetime happening that thrilled so many of our alumni, including hundreds who were involved in the arrangements. The photo was taken at San Fernando Cathedral, where Elizondo is the rector. His long association with St. Mary's has included teaching courses in theology and philosophy from time to time.

### Inside Cover

1. Robert B. Aguirre (B.B.A. '75) and his wife, Betsy, greet the pope. As project manager for the San Antonio papal visit, Aguirre worked a solid 12 months on countless details, a task he viewed as “a mission—a crusade.”
2. Dr. Grace Luther, Marianist sister and clinical director of the St. Mary's Family Life Center, greeting the pope last summer in Rome. She also met the pope at an audience with her Marianist sisters.
3. Other Marianists graced with a papal audience in Rome include the Rev. David Fleming, center, former St. Mary's chancellor and board chairman, and Brother Robert Wood, former sociology faculty, now stationed in Rome.

## Contents

- 2 Rattler Tales—St. Mary's Remembers.**  
Try the mini-quiz on St. Mary's history.  
*by Irma H. Guerrero (B.A. '87)*
- 4 How St. Mary's Rates as an Employer.**  
Fringe benefits are a big consideration in workers' lives.  
*by Mary C. Braley*
- 7 Annual Report for 1986-87.**  
President John A. Leies, S.M., discusses highlights of the year.
- 18 Expanding Recruiting Horizons.**  
Taking the story of St. Mary's across the Atlantic is part of a recruiter's job.  
*by Candace Kuebker (B.A. '78)*
- 6 Campus News**  
*by Barbara Armstrong (English communication arts senior)*
- 15 Alumnews**  
*by Diane Abdo Noll (B.A. '72) and Mary G. Etlinger (B.A. '79)*
- 16 Class Notes**  
*by Rissa S. Rothe (B.B.A. '85)*

*Gold & Blue* is produced for alumni, parents and friends in fall, winter and summer by the Public Relations staff.

Editor, Sylvia A. McLaren

Art Directors

Brad DiBaggio

Dianne Pipes

Photography

Ruben Alfaro

Oscar Gutierrez

Gary Hartman

Mark Langford

Learning Resources Center

David McNierney

Illustration

Brad DiBaggio

Guy Juke

Contents © 1987 by St. Mary's University. All rights reserved.

## Editor's Note

With this issue, *Gold & Blue* has been modernized to make the magazine more visually attractive and easier to read. A questionnaire asking for opinions will go to a random selection of alumni. Please help us improve the magazine by sending back your comments.

Easier to digest also is the annual report for the year ending May 31, 1987, presented in this issue as the university president's personal summary of the year's progress.

Rich history stretching back long before many of our alumni were born is an important part of St. Mary's. Last spring, university colleagues got together in the Pecan Grove to share their memories with the campus community. Check out their anecdotes on page 2.

Contrasted with the old days, a list of what these-days employees most value in the workplace is reviewed on page 4 by the university's director of personnel.

Ever widening the search for prospective students, St. Mary's admissions counselors now personally visit South America, Asia and Europe.

On page 18, Candace Kuebker gives us a glimpse of her recruiting trip to Europe.—*Sylvia A. McLaren*

## RATTLER TALES

St. Mary's  
Remembers

by Irma H. Guerrero (B.A. '87)



The Rev. John G. Leies

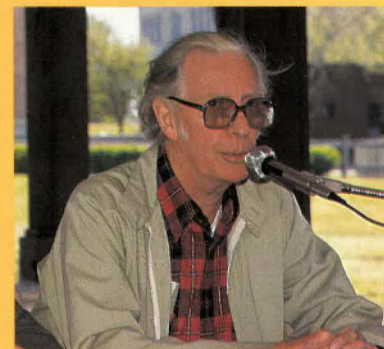
## The Early Years

*The Rev. John G. Leies, current law school chaplain:* He recalls when the school was upgraded from a college to a university. The year was 1927. "Cattle grazed in front of the school and chickens gathered around the pond where the statue of the Blessed Virgin now sits. The school consisted of two buildings—St. Louis Hall, now known as the Administration Building, and Chaminade Tower. Culebra Street was then only 12 feet wide and ideal for hiking, as long as you stayed out of the grass and away from the rattlesnakes. Ground was broken for the gym in 1928, but it wasn't built until 15 years or so later, due to the Depression. Students were rounded up to shovel gravel for the school grounds from a rock quarry on Culebra."

Brother Andy Cremer

Here are some of the comments of faculty and staff, introduced as some of the wisest and most colorful storytellers, who shared their favorite, funniest and close-to-the-heart St. Mary's memories at a brown-bag session in the Pecan Grove. The session was sponsored by the Marianist Forum in an effort to foster a continuing spirit of unity and family on the campus. To set the mood, take a short trivia test to see if you remember:

- \* Registration with Brother Tom Treadaway.
- \* Tuition at \$12.50 an hour.
- \* St. Mary's football team and the name of the coach who became the country's president.
- \* Give yourself an "A" if you started to hum *The Bells of St. Mary's* halfway through the questions.



Ken Carey

Man on a Mission:  
Kosub

*Ken Carey, retired political science professor:* "I came here when Elmer Kosub was the oldest living senior and playing baseball. I caught one of his games where he was put in as a pinch-hitter. He hit a home run over the trees, ran around the bases, then—mission accomplished—jumped in his car and drove off to work."

## Going Batty

*Brother Andrew Cremer, English professor:* "I go back to 1932. Everything has changed except the bats. Brother Frank Becker, a mad sort of genius, tried to get rid of them with ultrasonic sound, but only succeeded in driving all of us from the campus. It finally worked. The bats disappeared, but now they've made their home with us again."



## Brother Knows Best

*Dr. Lee Brown, chairman, History Department, on his student memories of the celebrated Brother Tom Treadaway: "I walked into the Registrar's Office and said to this little man peering out from under his visor, 'I'd like to major in history and minor in Spanish.' 'No, you'll major in history and minor in political science,' he told me. I didn't see him again for four and a half months, but when I came in to get counseling for the spring semester, he called me by my first name, knew what classes I had taken, and my grades. He was truly a genius. Back in '57 tuition was \$12.50 per hour."*



*Bob O'Connor*

## On Getting Hitched

*Bob O'Connor, Theology Department: A favorite memory is the day the Theology Department secretary accepted his marriage proposal. Now, four children later, the Chicago native recalls he honestly expected to see hitching posts instead of parking meters on Texas streets when he arrived here in the '60s.*



*Candace Kuebker, Admissions, left, and Rose Mary Droke, Career Planning & Placement, share a laugh as they recall their favorite Rattler Tales.*

## At Your Convenience

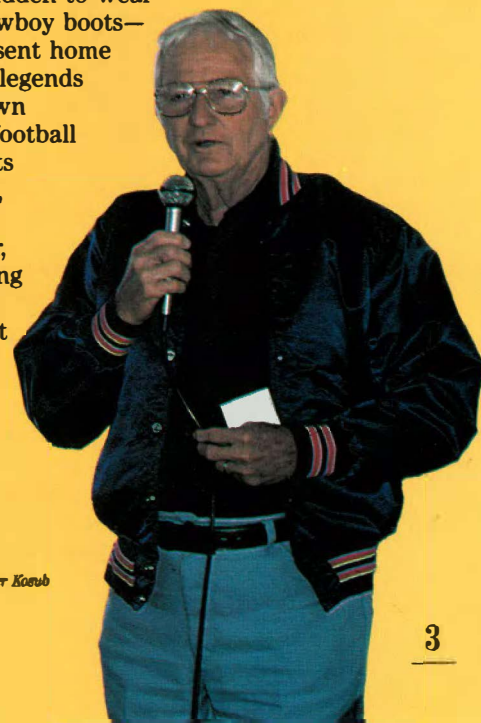
*Brother Rodney Novosad, director, Testing Services, and former dorm director: He remembers the year that Chaminade Hall students, stimulated by the Christmas spirit, "borrowed" 75 Christmas trees from a local convenience store. He cherishes a plaque that fun-loving students presented to him in recognition of his efforts to have root beer declared the official drink on campus. It shows the Blessed Mother mounted on a root beer bottle.*

## Hair Raisers

*English Department—Dr. Rose Marie Cutting: the night a tree in her backyard caught fire during an English Department party. Sister Ann Semel: non-Catholic students' perception of a nun in the classroom. "I still have a note I received from a student who thanked me for not living up to his expectations. He obviously had heard horror stories about nuns as teachers. It seems he had visions of my rapping his knuckles with a ruler, or having him kneel in a corner. I treasure that letter."*

## Rattler Reverie

*Elmer Kosub, former baseball coach: One version of how "Rattler" became the school mascot, he says, may be because the football players had to kick the rattlesnakes off the field before they could use it. He recalls: being a student on the GI Bill; that when the gym still had a dirt floor, trapeze artists from Ringling Bros. Circus used it as a practice arena—the rings are still there, above the drop ceiling; the then dean of students bellowing over the public address system, "This is a university, not a ranch," as a warning to students, forbidden to wear jeans or cowboy boots—they were sent home to change; legends handed down about the football team and its 1916 coach, Dwight D. Eisenhower, then a young lieutenant stationed at Fort Sam Houston.*



*Elmer Kosub*

# How St. Mary's Rates as an Employer

by Mary Braley  
Director of Personnel

**W**hat kind of benefits do workers value most? It's a question American business is studying intensely, partly because of declining productivity and the influence of Japan's womb-to-tomb care of workers—a management style designed to foster loyalty and improve productivity.

In a series of articles discussing American employer-employee relations, the national daily newspaper USA Today reports on employees' ratings of "great places to work" as those that provide:

- Medical expenses including eye tests
- Pension plans
- Maternity leave
- Help with children's day care
- Recreation facilities such as exercise center, swimming pool

And just as important, say the workers surveyed, is good internal communication demonstrated by:

- In-house newsletter
- Formal job postings
- Employee suggestion systems
- Formal grievance procedures
- Access to top management
- Clear policies on layoffs and dismissals
- Fair pay policies

How does St. Mary's shape up on the above? Excellently, even to a swimming pool, plus tennis courts, running track, picnic spots, green space—blessed as we are with tree-studded grounds to share with our students.

On only one of those items does St. Mary's fall short: help with children's day care. It's a tough issue, largely because of

the high cost, and one that has become a hot topic with politicians, well aware that over half the work force is now comprised of women, 20 million of whom are mothers with children under 18. That's double the number since 1970.

As director of personnel, I know that day care for children is one of the most frequent issues raised by St. Mary's women employees.

In the '70s, St. Mary's did offer day care to the public and to St. Mary's parents for the lowest fees possible to keep the service solvent. Primarily for training students majoring in early childhood development, the facility was housed in the Marianist sisters' property near the campus. But as costs rose, the center became a liability and had to be abandoned.

Our progress in helping parents in different ways has included hosting a course on parenting, the cost being underwritten by a grant. The 30 St. Mary's mothers and fathers who signed up were allowed one hour off work to attend the on-campus course, the first time the university had offered "release-time" privileges for parents. Evaluations by seven parents emphasized that because of family responsibilities after working hours, they would not have been able to attend the course without time off from work.

Reponses to our survey on other programs employees are interested in include seminars on investing, employee motivation, coping with stress, physical conditioning and buying insurance. Already employees may consult on campus with university-authorized financial planners and insurance representatives.

The success of any employee program does, however, depend



on strong staff support. When attendance is low, the administration becomes discouraged, and concludes that offerings are a waste of time and effort. For example, attendance is frequently disappointing at open enrollment presentations by representatives of our subsidized medical plans. This happens not only at St. Mary's—it applies at most work places. Yet the employees who do not attend are the very ones who complain about lack of information on medical plans. "We were too busy to come." "Our supervisors don't like us leaving the office," are among reasons given. Perhaps we need to better educate supervisors on employees' urgent needs, emphasizing that privileges do pay off in developing contented workers.

One of the greatest fringe benefits St. Mary's employees enjoy is opportunity for their own and their family's higher education—an item that can add up to immense



**The tuition reduction plan has been a great benefit for these alumni.**

**Hanna Family**—Victor and Gloria, right, with their children. From left, Mary (BA '84); Patrick (BBA '77); Arthur (BA, BS '75), St. Mary's faculty; Gregory (UTSA BA '79) and son; Damian (BA, BS '83); Geralyn (BS '86); and Jacqueline (BBA '80) and sons. Gloria has been employed at St. Mary's for more than 10 years.

savings in a family's budget.

After six months' service, eligible university members may enroll without charge in six hours of undergraduate courses or three hours of graduate courses per semester, a benefit that has resulted in degrees and job promotions for many an employee and has surely tended to curtail staff turnover. Based on a sliding scale of a parent's length of service, dependent children of employees are eligible for reductions in tuition. If no dependent children avail themselves of this benefit, an employee's spouse may be eligible for the same reduction.

As well, with expenses paid by the state, St. Mary's offers

on-campus G.E.D. instruction free of charge. The invitation to the public includes St. Mary's employees, who may be given "release time" from work with supervisors' approval. Is St. Mary's a great place to work? Some say yes and some will disagree. We know we can improve, and we intend to do so with the help of our administrators and democratically constituted Personnel Advisory Council and Faculty Senate. I believe we can honestly say we have much to offer our employees. St. Mary's is a great place to work. ■

Before her 1985 appointment as St. Mary's director of personnel, Mary Braley was director of personnel at Assumption College, Worcester, Mass.



During that time she served as treasurer of the Southern New England Chapter of the national College and University Personnel Association (CUPA). She is currently a member of CUPA and the San Antonio Chapter of the Personnel and Management Association.



## FALL ENROLLMENT

The St. Mary's fall enrollment of 3,840 is the highest in 15 years. The freshman class of 489 students is the largest in seven years.

Undergraduate enrollment increased by more than 7 percent and graduate student enrollment by 24 percent. Law school enrollment is intentionally limited to approximately 650 students.

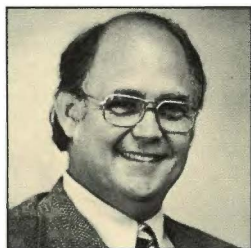
Total enrollment, 9 percent above last year, comprises 2,491 undergraduate students, 694 graduate students and 655 law students.

### New Degree

The new Bachelor of Science degree in biochemistry is designed to meet the needs of students considering health careers.

The new program will emphasize the biochemical and clinical applications of physical and analytical chemistry.

The curriculum aims to bridge the gap between biology and chemistry by offering courses taught by both chemistry and biology specialists.



Robert Howe

### Acting Dean

Robert C. Howe, associate dean of the School of Business and Administration, was named acting dean of the school. He succeeds Dr. James Robertson, who accepted a position at the University of Portland, Ore.

Howe is a long-term associate professor of marketing management. He joined the St. Mary's faculty in 1974 and served as acting dean of the business



Celebrating the traditional fall Red Mass are, from left, the Rev. John A. Leies, S.M.; Archbishop Patrick Flores; the Rev. Larry Doerschling, liturgy coordinator; and the Rev. Robert Drinan, guest homilist.

school from 1977-79.

The university is conducting a search to seek candidates for a permanent dean of the business school.

### Red Mass Homilist

Well-known Jesuit priest and former U.S. Congressman Robert F. Drinan, now at Georgetown University, gave the homily at the annual St. Mary's Red Mass in San Fernando Cathedral. Archbishop Patrick Flores was the principal celebrant. Distinguished guests included judges, state senators and city leaders.

The Mass commemorates an old English ceremony during which priests and judges in red robes asked blessing for the annual opening of Parliament, the courts and universities. The event is jointly sponsored by the School of Law and the San Antonio Catholic Lawyers' Guild.

### Federal Grant

St. Mary's University has been awarded a federal grant of \$600,000 to fund five separate programs. The grant is designed to:

1. develop a degree in manufacturing engineering;
2. ensure that all students achieve writing proficiency;
3. intensify the summer preparation program for incoming freshmen;
4. improve academic and career advising; and
5. develop a formal evaluation program to accurately reflect student and institutional performance.

### Help for Minorities

The University of Texas Health Science Center at San Antonio received a federal grant of \$346,133 as refunding to help prepare St. Mary's minority students for admission to medical and dental schools.

Students receiving summer stipends under the Health Careers Opportunity Program spend their first two summers at St. Mary's for intense training in premedical and pre dental subjects.

The Association of American Medical Colleges reports that St. Mary's University was second in the nation in supplying Mexican-American applicants to the entering classes of 1986. Since the original HCOP grant of \$384,531 in 1984, about 40 St. Mary's premedical and pre dental students have participated in the program.

### Negri Bequest

The Rev. Louis M. Reile, S.M., professor of cinema arts and longtime friend of film star Pola Negri, will establish the Pola Negri Center for Film Studies at St. Mary's.

Negri, who died in August at age 84, bequeathed a number of her personal records and career memorabilia to St. Mary's.

She also requested that her framed documents and scrapbooks be displayed by the university. She provided an additional \$4,000 to preserve and secure the objects.



Frank Herrera Jr.

### Honored Alum

The St. Mary's University Law Alumni Association honored local attorney Frank Herrera Jr. as the Distinguished Alumnus of 1988 at the association's annual banquet. Association president Margaret Maisel presented Herrera with the award.

Herrera obtained his law degree from St. Mary's in 1967, as well as his bachelor's degree three years earlier. He is a member of the St. Mary's University Alumni Association board of directors.



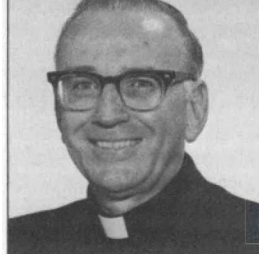
Brother Ed Violett

### Vocation Service

The Society of Mary Province of St. Louis has established the Marianist Vocation Service at St. Mary's University. Brother Ed Violett, director of the office, will coordinate the vocation effort for the Marianists in the Southwest area of Texas, New Mexico, Oklahoma, Arkansas and Louisiana.

Available services include vocation information, retreats and awareness presentations for men and women considering religious life.

The service began officially with an open house and blessing of the Vocation Office by the Rev. Joseph Uvietta, S.M., St. Mary's chancellor and Society of Mary provincial.



Rev. John A. Leies, S.M.  
President, St. Mary's University

*John A. Leies* 10

# PRESIDENT'S REPORT

1986-87

The academic year ending May 31, 1987, marked St. Mary's 64th year of higher education. There have been many changes over these years — and this past year has been no exception. Let me note a few of the highlights.

*Student enrollment continued to grow* to a total enrollment of 3,560 in fall 1986 — our highest in more than 10 years. We registered 438 freshmen, the largest class since 1980, and also enrolled the largest number of transfer students in recent years. Most remarkable was the growth in graduate students: a 10 percent increase in students and 13 percent increase in credit hours over 1985-86.

*Our residence halls* were filled to capacity with 1,041 students in fall 1986, justifying construction of another hall by the fall of 1987, named for Archbishop Patrick Flores.

## Academics

The vitality of an educational institution depends on its ability to adapt to new needs. This past year two new graduate theology programs were introduced, as well as an undergraduate program in pastoral music. Two new graduate programs in engineering were begun, plus an undergraduate program in biochemistry.

Notable academic events included the *School of Business and Administration's* research program on "Women in Texas Business" in conjunction with a highly successful annual Business Week. Brother Paul Goelz, director of the school's Algur H. Meadows Center, coordinated a very successful series of forums on entrepreneurship.

In the *School of Humanities and Social Sciences* the Rev. Charles Miller was appointed dean. Humanities enrollment grew especially in psychology, education and English communication arts.

*The School of Law* hosted the American Bar Association re-accreditation team in the summer of 1986 and sponsored a successful summer pilot pro-

gram at Innsbruck, Austria, to give students in good standing an opportunity to broaden their international legal knowledge. A second Innsbruck program followed in summer '87.

*School of Science, Engineering and Technology.* At the close of 1986 the federal government renewed funding at \$346,000 for our Health Careers Opportunity Program coordinated with the University of Texas Health Science Center. Also during the year, the dean, Dr. Anthony Kaufmann, established an advisory council for the school.

Our *Graduate School* showed dramatic increases from 572 students in 1985 to 629 in 1986, and from 8,300 credit hours to 9,400. Faculty members spent considerable time during the year on studying the role and future direction of graduate studies.

## Students

Students are the primary concern of any university. At St. Mary's that concern includes not only intellectual life, but also physical and social well-being. This past year we inaugurated a Freshman Leadership Program for students to attend workshops that encourage motivation, creativity, leadership, communication, etc. The result: 80 percent of those taking part assumed campus leadership positions throughout the year and increasing numbers of students became involved in Campus Ministry activities such as retreats, blood drives, repairing homes of disadvantaged families, etc.

## Alumni

St. Mary's Alumni Association was again very active. Highlight of the year was the Oyster Bake — the most successful in our history, with an estimated attendance of 38,000. As a result, the Alumni Association presented the university with \$180,000 for scholarships and financial aid programs. To our loyal and hard working alumni my sincere thanks for their great efforts and generosity.

**Athletics**

Our teams had a great season. The men's baseball team won the Big State Conference and District IV title. The men's basketball Rattlers made it to Kansas City for the NAIA national championships, and the women's softball team, NAIA national champions the previous year, again went to the national tournament where they tied for fifth place. Our basketball team defeated UTSA 68-55 in the Mayor's Challenge Cup. Sincerest congratulations to our coaches, trainers and players.

**High Points**

Space does not permit mention of our many events and activities but here for example are some high points: law students achieved first place in 1986 State Moot Court Competition and second place in the 1986 Association of Trial Lawyers of America Regional Mock Trial Competition; the remarkable record of two out of three premed applicants accepted by medical schools. Our prelaw students enjoy similar success.

**Faculty**

Before closing, I want to welcome new people to the St. Mary's family and congratulate others on their achievements. Father Joseph Uvietta, S.M. (BA '52), is our new chancellor, succeeding Father David Fleming, S.M. Frank Molek is our new vice president of University Relations. New members of our board of trustees are Brother Bernard Ploeger, S.M.; Brother Peter Pontolillo, S.M.; the Rev. John Moder, S.M.; Pedro Viyao; Nelson Wolff; Barbara Benavides; James Koett; Robert Mason and Ron Bird.

At the Spring Faculty Appreciation Dinner hosted by our Alumni Association, faculty members honored were Dr. Melba Hutsell; the Rev. John Rechten, S.M.;

Dr. Marian Schultz; Dr. Homer Fetzer; the Rev. Charles Neumann, S.M.; Dr. Charles Cotrell; William Francisco; Charles Cantu; the Rev. Charles Blasen, S.M.; Dr. George Benz; Paul Ferguson and Dr. Samuel Thompson. The list of awards and accomplishments of our faculty and personnel could scroll through several more pages. To all, I say thank you for another successful year at St. Mary's. I look ahead with confidence to the 1987-88 academic year in which we will continue to strive for excellence. I thank the Lord for blessings in this past academic year and ask His blessings in the new one!

Sincerely,

*Rev. John A. Leies, S.M.*  
 Rev. John A. Leies, S.M.  
 President

**Financial Report**

In the year ending May 31, 1987, internal fiscal controls continued to be strengthened.

As a result of these and other improved management practices, the unrestricted current fund showed an increase of \$115,290 on operating revenues of approximately \$25.8 million.

As is traditional, tuition and fees comprised approximately 67% of the university's operating revenues. Faculty and supporting staff salaries and benefits, and general educational activities accounted for more than 82% of the university's expenditures.

The school's endowment reached \$12.6 million and the value of the campus buildings and plant more than \$56 million.

**CHART I. REVENUES (by percentage)**



**CHART II. EXPENDITURES (by percentage)**



**CHART III. EDUCATION & GENERAL EXPENDITURES (by percentage)**



# 1986-87 President's Report

*This list is comprised of gifts received from June 1, 1986 to May 31, 1987.*

## ANNUAL FUND GIFTS

Abbott Laboratories Fund  
 Richard R. Aboia  
 Norman J. Acker  
 James H. Acosta  
 Harlan J. Adamcik  
 Thurman J. Adkins  
 Aetna Life & Casualty  
 Foundation, Inc.  
 Robert B. Aguirre  
 Armando C. Albarran  
 James M. Albers III  
 Alcoa Foundation  
 George Alexandrides  
 The Allstate Foundation  
 Jeanette M. Almaguer  
 Marcus J. Altenburger  
 Carlos Alvarado Jr.  
 Frank F. Anaya Jr.  
 Paul Anderson Jr.  
 Larry M. Andrews  
 Luis Armendariz  
 Armstrong World  
 Industries Inc.  
 Gerald R. Arredondo  
 Atlantic Richfield  
 Foundation  
 Robert H. Austin  
 Victor R. Awtry  
 Amos Ayala III  
 Isaac Ayala  
 G. Steve Bailey  
 Della J. Baker  
 David W. Baldree  
 Robert A. Ballard  
 Armando G. Barbosa  
 Edward F. Bareis  
 Clyde J. Barlow  
 Elizabeth M. Barnes  
 Lynn Barnett  
 Jesse P. Barrios  
 Nicholas Barron  
 Sam Barron  
 Frederick J. Bartkowski  
 Charles F. Bartush Jr.  
 James E. Barylski  
 Don M. Baucum  
 Kathleen J. Bazan  
 John D. Beaven  
 Betty Beck  
 William J. Beck  
 Judy M. Becker  
 The Becton, Dickinson  
 Foundation  
 Don E. Beere  
 Timothy J. Behlmann  
 Clyde L. Beissner  
 Christine V. Bell  
 Mrs. E. L. Bell  
 James E. Bell  
 Barbara B. Benavides  
 Michael A. Benavides  
 Winston R. Bennett Jr.  
 Isabel R. Bernal  
 William B. Berning Jr.  
 Celia Berwin Memorial  
 Foundation  
 Murray B. Betts Jr.  
 Leon R. Beverly III  
 Robert A. Biasioli  
 Maggie C. Bick  
 David W. Biegler  
 Lawrence J. Bielicke  
 William Bierschwale  
 Big Red Distributors Inc.  
 Robert E. Bingham  
 Bird & Noll  
 Daniel W. Bish  
 Michael H. Bixby Jr.  
 James T. Blaise  
 Dr. Leland T. Blank  
 Genevieve S. Blume  
 Lawrence J. Blume  
 Lucile Bodenheimer  
 Dr. Edmond W.  
 Boenisch Jr.

Dennis H. Boerner  
 Donald N. Bonacci  
 Patricia C. Bones  
 William J. Bonner Jr.  
 Michael A. Boone  
 Robert T. Bordelon  
 Oliver C. Bosbyshell Jr.  
 Francis J. Bowen Jr.  
 Leo J. Boyle  
 Vincent A. Boyle  
 Richard W. Boyles  
 Louise L. Bradshaw  
 Michael J. Brady  
 Paul H. Brand  
 Joseph C. Brandmeier  
 Evelyn H. Breaux  
 Michael J. Bresnahan  
 John D. Brinkman  
 Arthur C. Briseno  
 Randall Bristow  
 Broadway National Bank  
 Lelan F. Brotherman  
 Dale W. Brothers  
 Charles L. Brown  
 Sadie J. Brown  
 James Bucek  
 Clement A. Bueche  
 Michael D. Bugajsky  
 Dr. & Mrs. James L.  
 Burch  
 Glenn Burell  
 Adelaide R. Burke  
 David W. Burke  
 Homer H. Burkett  
 John C. Burkholder Jr.  
 Robert G. Burkholder  
 Richard L. Burris  
 Rice H. Burttschell  
 Louis Bustamante  
 Donald R. Bynum  
 Liza M. Calderon  
 James M. Campbell  
 Dr. Robert P. Campbell  
 Craig J. Cantoni  
 Joe F. Cantu  
 Dan L. Carabin  
 Arturo L. Cardenas  
 Edmond Cardenas III  
 Andres G. Cardona Sr.  
 Joseph Carinhas  
 Scott S. Carnal  
 Antoninette R. Carnesi  
 Donald C. Carroll  
 Cristina E. Carter  
 Michael T. Carter  
 Timothy E. Casey  
 Yvonne Casso  
 Stephen M. Castro  
 Elmo M. Cavin Jr.  
 Central and South West  
 Foundation  
 Frank L. Cernosek  
 Louis J. Cerny  
 Certainteed Corp.  
 Foundation  
 Edward C. Chan  
 Robert T. Chapa  
 Edward B. Cheviot  
 Robert O. Chidgey  
 Dominic J. Chiminello  
 Joseph Y. Ching  
 Henry W. Christopher Jr.  
 Paul V. Churchman  
 Augustus D. Clemens  
 William H. Clover  
 Charles C. Clubb  
 Dr. Thomas P. Coffey  
 Robert J. Cohan  
 David J. Colby  
 Rosalyn F. Collier  
 Cornelius J. Collins  
 Harold E. Collins  
 Fred W. Collmann  
 Adele B. Coluin  
 William H. Combs III  
 Doris Z. Corley

Connecticut Mutual Life  
 Insurance  
 T. J. Connolly  
 James Conroy  
 Daniel Constanzo Jr.  
 Carolyn E. Cook  
 Paul J. Cook  
 William N. Corbin  
 Jose L. Cordova  
 Simon Casper  
 Cornelius Jr.  
 Fabian Cortez III  
 Daniel E. Costello Jr.  
 Robert P. Cotter  
 John R. Courtney  
 David L. Craft  
 Denise Voigt Crawford  
 Kenneth L. Crosswell  
 Crum and Forster  
 Foundation  
 Dr. J. Pat Cuellar Jr.  
 Roy Curiel  
 Robert C. Curry  
 Dr. Sylvia H. Custer  
 Frank W. Daehne  
 Datapoint Corp.  
 Donald W. Daut  
 Laurence M. Daves  
 Charles A. Davidson  
 Gaylon O. Davidson Jr.  
 Dr. Luis Davila Jr.  
 Ernest S. Dean Jr.  
 Richard C. Dean  
 Dean Witter Financial  
 Services  
 Ferdinand F. De  
 Arredondo  
 Dr. Joseph A. De Gasperi  
 Laura C. De La Garza  
 Harry M. Delhomme  
 Carmen De Llano  
 Del Monte Corp.  
 Lawrence J. Del Papa  
 Carmen F. Del Rosario  
 Claude B. Denton  
 Lea M. Desmarteau  
 John W. Dewey  
 Ernest M. De Winne Jr.  
 Diamond Shamrock  
 Stephen C. Dickman  
 Chandler Diehl  
 John L. Dieterle  
 William E. Dieterle  
 Conrad A. Diric  
 Sharon R. Disler  
 Joyce Dobrowski  
 William J. Dodds  
 Frank W. Doerfler  
 Ralph E. Domas  
 Jesse P. Dominguez  
 George P. Donaldson III  
 Dorothy M. Donohue  
 Joseph D'Orsogna  
 William L. Dowdy  
 Carolyn N. Drawert  
 Walter E. Drone  
 Angelo J. Drossos  
 Joseph J. Drouillard  
 Dr. Joe V. Dufresne  
 Christina Dunnell  
 Edgar R. Dupre Jr.  
 Walter D. Duvall  
 Leonard J. Dyke  
 Lester L. Dziuk  
 Tenya Marie Economou  
 Joseph E. Edell  
 Juan J. Egues  
 Ray Ellison Sr.  
 Emerson Electric Co.  
 Kathleen Emery  
 J. David Emge  
 Enron Foundation  
 Susan B. Ervin  
 Gerry J. Eschmann  
 Dr. Ray J. Esparza  
 Joseph Estreilo

Clem H. Etlinger  
 Lawrence J. Eul  
 Emily P. Evertsen  
 Exxon Educational  
 Foundation  
 Giovanni G. Fazio  
 John C. Fecci Jr.  
 Federated Dept. Stores  
 Foundation  
 James R. Fendley Jr.  
 Danette R. Fennessy  
 Jesse G. Fernandez  
 John A. Fernandez  
 Remy J. Ferrario  
 Dr. J. P. Fetherston Jr.  
 James F. Fewster III  
 John A. Fiano  
 Sheila G. Figueroa  
 William H. Fiock  
 George R. Fleming  
 E. L. Flinn  
 Bennie Flores Jr.  
 Debra Flores  
 Jesse Flores  
 Jose A. Flores  
 Roberto Flores Jr.  
 Lawrence J. Flume Jr.  
 Edward Foelker  
 Dr. Vincent Fontana Jr.  
 Ford Motor Co. Fund  
 Charles J. Fordham  
 Linda Foss-Simmons  
 Elisabeth J. Frame  
 John N. Franko  
 James C. Frazier  
 Richard C. Fritz  
 Albert F. Fuessel III  
 Barbara C. Fuhrmann  
 Fulbright & Jaworski  
 Bill J. Funkenbush  
 Patrick J. Gaalaas  
 Gus Galindo  
 Matthew A. Galindo  
 Gonzalo R. Gallegos  
 James J. Gansle  
 Abel Garcia  
 David H. Garcia  
 Ernesto M. Garcia  
 Joseph P. Garcia  
 Margarito L. Garcia Jr.  
 Miguel Garcia  
 Rafael Garcia Jr.  
 Mildred E. Garner  
 Gregory Garza  
 Eugene B. Geimer  
 General Dynamics Corp.  
 Edward F. Gentempo  
 Martin P. George  
 Richard J. George  
 Robert J. Gieb  
 Kevin J. Gilhooly  
 James L. Gill  
 Gill Savings  
 Robert W. Gillean  
 Robert P. Gilligan  
 Ann Marie Girardopt  
 Eugene A. Gittinger  
 Alan S. Glann  
 Thomas J. Godfrey  
 F. J. Goebler Jr.  
 Martin Goland  
 Henry W. Gomez  
 Valdemar R. Gomez  
 Robert R. Gonzales  
 David O. Gonzalez  
 John A. Gonzalez  
 Veronica Gonzalez  
 George G. Goolsby  
 James J. Gordon  
 Sidney F. Goslin  
 Robert B. Grau  
 John B. Gray  
 Dr. Jerry L. Griffin  
 Anthony L. Grossi  
 Jeffrey J. Grothues  
 Jerome J. Grothues

Mark S. Grothues  
 William Guardia  
 Donald J. Gudinas  
 Cipriano F. Guerra Jr.  
 Eliud Guerra  
 Russell Guevara  
 Gulf States Utilities Co.  
 Francis P. Gurley  
 Patricia Y. Gutierrez  
 Urban A. Gutting  
 Trice W. Haas  
 Judge Carol R. Haberman  
 Harold J. Haffner  
 Donald R. Hakala  
 David Halamuda  
 John C. Hale  
 William T. Haley Jr.  
 Mary T. Hanna  
 James S. Harrington  
 James S. Harrison III  
 Kenneth Harz  
 Roy L. Hauger  
 Thomas M. Hayes  
 Carol L. Haynes  
 Robert D. Haynes  
 Rupert Hays  
 Paul C. Hedges  
 Geraldine Heinrich  
 A. Chris Heinrichs  
 Peter J. Hennessey  
 M. Catherine Herrera  
 Ronald J. Herrmann  
 Rev. Charles E. Herzig  
 Suzanna T. Hessong  
 Gary L. Hill  
 Albert E. Hindrichs  
 Ronald A. Hingst  
 Robert B. Hoch  
 Bill D. Hockersmith  
 Wilbur L. Hoelscher  
 Richard R. Hoffman  
 George E. Holmes  
 Charles A. Hoover  
 Joan F. Hopkins  
 John P. Houston  
 Maura M. Houston  
 William J. Houston Jr.  
 Patrick E. Howard  
 Dr. John P. Howe III  
 Darrel W. Hudson  
 Margaret M. Hudson  
 William D. Hudson  
 Richard L. Huff  
 James F. Hufstetler Jr.  
 Richard C. Hulboj  
 John E. Hutzler Jr.  
 Mr. & Mrs. Anthony L.  
 Icenogle  
 Diane M. Icenogle  
 James L. Ikard  
 International Business  
 Machine  
 Frank C. Jackson  
 Richard C. Jaworski  
 Glenn J. Jennewein  
 Ruby S. Jenschke  
 Jocks Productions Inc.  
 James L. Johnson  
 Livija D. Johnson  
 William H. Johnson  
 Noel L. Johnson-Hodge  
 Constance J. Jones  
 Joe W. Jones  
 Larry C. Jones  
 Robert S. Jouett  
 Hildegard Judson  
 Dr. Bill A. Juraschek  
 Charles J. Jurek  
 Dennis F. Juren  
 J. Patrick Kaine  
 Rev. Lawrence T. Kajs  
 Harold H. Kalich  
 Charles S. Kammer  
 Dale H. Kangas  
 Charles Karakashiañ Jr.  
 Donald M. Karam

## 1986-87 President's Report

Michael M. Kay  
 William L. Kehres  
 Marion F. Keller  
 Robert L. Keller  
 Cecelia R. Kelly  
 Edward J. Kelly  
 Kevin P. Kennedy  
 Wayne R. Kennell  
 Joseph T. Kenny  
 Francis J. Kerford  
 Norma S. Ketchum  
 Karl K. Kettler Jr.  
 Leonard A. Keyes  
 John A. Kiburz  
 Jessie A. Killian  
 Timothy R. King  
 Willard L. King  
 Alfred H. Kircher Jr.  
 Robert D. Klock  
 Ernest R. Knirsch  
 Eugene J. Knopik  
 Donald A. Knowlan  
 George L. Kocian  
 Jean M. Kohler  
 Stanley J. Konieczny  
 Donna M. Koogle  
 Edward T. Kott  
 Frederick E. Kraus  
 Michael J. Krupski  
 Katherine K. Kuntz  
 Marvin H. Kuntz  
 Thomas A. Kuntz  
 Stephen W. Kuzmich  
 Linda K. La Grone  
 Vera A. Lamm  
 Ashley B. Langer  
 Max T. Langley  
 Marvin P. Laskowski  
 Dr. Jeffrey R. Latimer  
 Elizabeth M. Ledger  
 Legan Charitable Trust  
 Paul E. Leitzinger  
 Anthony Leone Jr.  
 Charles C. Lepold  
 Lever Brothers Co.  
 John R. Libby  
 Terry G. Lintz  
 Dr. Paul A. Lister  
 Esther Locascio  
 Billy R. Locke  
 Bradley S. Lomax  
 Lone Star Gas Co.  
 Michael M. Looney  
 Dr. Stanley P. Lopat  
 Beverly R. Lopez  
 Rafael Lopez  
 Sylvester J. Lopez  
 Sylvia J. Lopez  
 Albert P. Losoya  
 Charles E. Loudon  
 Paul E. Loustaunau  
 Homer T. Love Jr.  
 O. Earl Lowe  
 Charles S. Lowrey  
 Jaime Lozano  
 Mark E. Luber  
 Joe Lucchese  
 Marinella T. Luchnick  
 Timothy F. Ludolph  
 Werner A. Luecke Jr.  
 Raymundo R. Luna  
 Terry M. Lurtz  
 Clayton J. Lutz  
 John C. Lyon  
 William C. Madden  
 Chris Maguire  
 Howard E. Major Jr.  
 Mallinckrodt Fund Inc.  
 Richard J. Manganiello  
 Paul D. Mangelsdorf  
 Dr. A. David Mangelsdorff  
 Richard A. Mangold  
 Bill E. Mann  
 Frank J. Marchlori Jr.  
 Marvin J. Marnock  
 Glenn R. Marple

Anthony R. Martinez  
 Daniel B. Martinez  
 Isabel G. Martinez  
 John A. Maskey  
 Connie T. Mason  
 Cynthia Y. Massey  
 Edward R. Matjeka  
 Charles K. Matocha  
 John B. May  
 Richard E. May  
 William F. McBrearty Jr.  
 Dennis P. McBride  
 Thomas E. McCarty  
 Donald C. McCleary  
 James F. McCormick  
 Dr. Louis H. McCormick III  
 Bernard T. McCutchen  
 John M. McDavid  
 McDonald Douglas Foundation  
 Patrick K. McDowell  
 R. John McKay Jr.  
 Robert L. McKibbin III  
 Lee F. McNamara  
 Wade McNeill  
 John M. Medellin  
 Peter Meehan  
 Nancy E. Mellen  
 Walter A. Meller  
 George Mendez  
 Rebecca Merlo  
 Margo S. Merrell  
 Oscar F. Metzger  
 Anthony B. Meurer  
 James A. Meurer  
 Marcus C. Meurer  
 Edward F. Meyer  
 Thomas L. Michael  
 Warren F. Michener Jr.  
 Dr. Joseph F. Mifsud  
 John F. Milam III  
 James A. Miller  
 Edward Millman Jr.  
 Albert F. Milne  
 Joseph H. Minor  
 Mary Nell Mitchell  
 Mobile Foundation Inc.  
 Gregory Moczygamba  
 Vernon H. Moeller  
 Paul F. Molina  
 Arthur R. Molner  
 John R. Monier Jr.  
 Jules C. Monier  
 Rudolph T. Monsalvo  
 Enrique Montemayor  
 Dr. Reynaldo H. Morales  
 Daniel J. Morash  
 Maria Morfin  
 Mark Morris  
 Frederic W. Morton Jr.  
 Motorola Foundation  
 Denise W. Mountjoy  
 Dr. Edwin L. Mueller  
 Dr. Edwin L. Mueller Jr.  
 Dr. Theodore A. Mueller  
 Dr. Thomas E. Mueller  
 Marcus R. Muenchow  
 Patricia A. Muller  
 Walter J. Murphy  
 Mutual of Omaha  
 Beverly N. Myers  
 Malcolm A. Myler  
 Kenneth J. Narendorf  
 Susana Narvaez  
 National Distillers & Chemical Corp.  
 Jacqueline L. Nelson  
 Susan T. Nesrsta  
 James F. Neumann  
 Sandra L. Newell  
 Charles A. Newton  
 Chan-Tong Ng  
 Timothy Nicholson  
 Louis H. Nickerson  
 John J. Niehaus

Eugene F. Niehoff  
 Harry W. Nixon  
 Robert D. Nogueira  
 Dr. Janet Noll  
 Celia F. Nordfelt  
 North American Philips  
 Patricia Novak  
 Murray R. Novy  
 Bryan R. O'Boyle  
 Debra A. O'Boyle  
 Occidental Petroleum  
 Charitable Foundation Inc.  
 Dr. Joseph M. Ojile  
 Maurice P. O'Keefe  
 Arnold Ondarza III  
 Fred Ondarza Jr.  
 Alma G. Ortiz  
 Esther C. Ortiz  
 Patrick J. Osborn Jr.  
 Steven H. Olvey  
 Aniago H. Oyeka  
 Michael G. Pagonis  
 Leroy J. Pahmiyer  
 Thomas A. Pajda  
 Francis E. Palma  
 Dr. Hubert B. Palmer  
 Anthony J. Pansza  
 Robert E. Park  
 Dr. Jerome G. Parma  
 Sixtus J. Pawlik  
 John R. Paxson  
 George W. Payne  
 Susan S. Peluso  
 Humberto O. Pena  
 J. C. Penney Co. Inc.  
 Louis John Peralta  
 Mario E. Perez  
 Thomas G. Peterson  
 Anthony A. Petrocchi  
 Gus C. Pflugmacher III  
 John S. Phelan  
 Howard L. Phillips  
 Jack B. Phillips  
 Ruby C. Phillips  
 Phillips Petroleum  
 Foundation  
 John M. Pledge Sr.  
 Dr. Leonard Polanco  
 Mary A. Polanski  
 Adis L. Ponsdomenech  
 James E. Poole  
 Douglas C. Porter  
 Lige B. Potts  
 Daniel G. Puetz  
 Fred J. Quarles  
 Joseph H. Quintanilla  
 Maria M. Quintanilla  
 George F. Rabe  
 George E. Rabinowitz  
 Catherine C. Ramirez  
 Jose A. Ramirez  
 Israel Ramon Jr.  
 Alfred M. Rath  
 Hamilton H. Redmon  
 Russell A. Reeb  
 Patrick L. Regan  
 Edwin T. Reilly Sr.  
 James W. Reilly  
 Michael F. Reimherr  
 Trinidad F. Rendon  
 Delvin E. Ressel  
 Curtis L. Retzlaff  
 Joseph A. Reyes Jr.  
 Silvio U. Reyes  
 Dr. John T. Richards  
 James A. Richardson  
 Richters' Bakeries  
 John A. Ridd Jr.  
 Wilton R. Ridout  
 William W. Riebe  
 Stacy D. Riley  
 Carol A. Risz  
 Everett A. Risz  
 Judge Raul Rivera  
 Don E. Roberts

Harold Roberts  
 R. Leslie Robeson  
 Ann M. Robles  
 Cecilio G. Rodriguez  
 Fernando A. Rodriguez  
 Jesse Rodriguez  
 Lucia R. Rodriguez  
 Mary Rohmer  
 Gloria E. Roicki  
 Floyd M. Roland  
 Romeo J. Romero  
 David F. Rosow  
 Ferd L. Rothe  
 Dr. Carl A. Rotter  
 William S. Ruff  
 Thomas J. Ruhnke  
 Charles W. Ruiz  
 Brian J. Rutkowski  
 Ruben M. Saenz  
 St. Monica's Guild  
 James A. St. Ville  
 Arthur F. Sandoval  
 Lowell N. Sawyer  
 W. Charles Sawyer  
 John F. Scarzafava  
 Rose M. Schafer  
 Curtis L. Scheh  
 William C. Scheli  
 Joseph E. Scherer  
 Dr. John F. Schilling  
 Kenneth Schloss  
 Mrs. Gerald Schmitz  
 Neil O. Schneider  
 Carol R. Schoellmann  
 Neta Schott  
 Nancy J. Schrack  
 Joseph F. Schreiber Jr.  
 Raymond J. Schreiber  
 Donald L. Schulte  
 J. Robert Scott  
 Scott Paper Co.  
 Foundation  
 Sears-Roebuck Foundation  
 Robert E. Seng Jr.  
 Debra A. Serna  
 David C. Sharman  
 Shell Co. Foundation  
 S. Marty Shelton  
 Thomas M. Shelton  
 Tom J. Sheridan  
 Arthur P. Sierra  
 Singer Co. Foundation  
 Ned A. Small  
 Evelyn P. Smathers  
 John Smith  
 Dr. Richard R. Smith  
 James O. Soat  
 Joseph S. Sobieski  
 Charles R. Solcher  
 James H. Sorenson  
 Southwestern Bell  
 Foundation  
 Dr. Robert G. Spalten  
 Leonard H. Specht  
 Dr. Manny Spector  
 Carole J. Spencer  
 Eugene Spieckermann Jr.  
 Daniel J. Stanush  
 David D. Starks  
 Victor Stavinoha  
 Eugene R. Steele  
 Glennis W. Stein  
 David J. Stoodley  
 O. Michael Storlie  
 Kathleen H. Stroud  
 Michael T. Stroud  
 Eileen K. Stryker  
 Louis H. Stumberg  
 Arnold A. Sturm Jr.  
 Gerard J. Sulaica  
 Daniel Sullivan IV  
 Elizabeth R. Swize  
 Albert P. Syverson  
 Marion A. Talbert  
 Louis L. Talbot  
 Johnnie P. Talty Jr.

Charles W. Tarrillion Sr.  
 Edwin H. Taylor  
 Robert T. Taylor  
 Myra R. Tejada  
 Teledyne Charitable Trust  
 Foundation  
 Tenneco Inc.  
 Tesoro Petroleum  
 Texaco Philanthropic  
 Foundation  
 Texas Independent  
 College Fund  
 Janelle M. Thomas  
 Jack H. Thompson  
 Patricia A. Thompson  
 Samuel M. Thompson  
 Thomas P. Tibiletti  
 Cruz M. Tjerina  
 Paul A. Tisdale  
 Gerald M. Tonnell  
 Thomas Townley  
 Dr. Daniel L. Traber  
 Michael J. Trask  
 Betty Travis  
 Katherine Trent  
 William S. Trivette  
 Gary B. Tschirhart  
 Glynn W. Tschirhart  
 Leslie W. Tschoepe  
 Terry Tuck  
 USAA Group  
 Donald A. Uhlig  
 Enzo A. Uliana  
 United Television Inc.  
 Fernando Valdes  
 Oscar T. Vale Jr.  
 Ignatius E. Valenta  
 Valero Energy Corp.  
 Mrs. Peter Vallone  
 Dr. Patrick L. Valls  
 Julien C. Van Haute  
 Edward A. Vasa  
 Manuel C. Vasquez  
 Henry G. Victor Jr.  
 Bernard J. Villa Jr.  
 Thomas A. Villalon  
 Rolando Villanueva  
 Fernando Villarreal Jr.  
 Duane R. Visconti  
 Simon P. Vistuba  
 Pedro E. Vijayao  
 Ernest J. Vogelgesang  
 Vulcan Materials Co.  
 Robert H. Wahne Jr.  
 Joseph C. Wailes  
 Raymond L. Waldron  
 Nancy S. Walker  
 Msgr. Alexander Wangler  
 Dr. Albert H. Warburton  
 Marianne B. Waters  
 George A. Watts  
 Hazel N. Weathersby  
 Monica J. Weber  
 John B. Webster  
 Phil D. Weihs  
 Frank H. Wesling  
 Robert V. West  
 Roger J. Wetz  
 Anthony E. Weynand  
 Billy N. White  
 Susan G. White  
 Earl E. Whitworth  
 Wallace E. Whitworth Jr.  
 Lew Jane Wiese  
 Roy E. Willborn  
 Annie A. Williams  
 Barbara N. Williams  
 Henry G. Williams  
 Imogene F. Williams  
 John M. Williams  
 William E. Williams  
 Howard F. Williamson  
 Randolph G. Wilson  
 Dr. Robert J. Wilson  
 Bertha C. Winborne  
 Jerome L. Windlinger

Greg J. Winter  
 Judy L. Wong  
 Marilise M. Young  
 Zachry Foundation  
 Dr. Mary A. Zaldivar  
 Fred D. Zalmanzig  
 Gerard M. Zimmerebner  
 Lawrence A. Zoller

**MATCHING GIFTS**

Abbott Laboratories Fund  
 Alcoa Foundation  
 Allstate Foundation  
 Armstrong World  
 Industries Inc.  
 Atlantic Richfield  
 Foundation  
 The Becton, Dickinson  
 Foundation  
 Campbell's Soups  
 Central & South West  
 Foundation  
 Certainteed Corp.  
 Foundation  
 Connecticut Mutual Life  
 Insurance Co.  
 Dean Witter Financial  
 Services  
 Del Monte Corp.  
 Deloitte, Haskins & Sells  
 Foundation  
 Enron Foundation  
 Ernst & Whinney  
 Foundation  
 Exxon Educational  
 Foundation  
 Federated Dept. Stores  
 Foundation  
 Ford Motor Co. Fund  
 General Dynamics Corp.  
 Gulf States Utilities  
 International Business  
 Machines Corp.  
 J. C. Penney Co. Inc.  
 Lever Brothers Co.  
 Lone Star Gas Co.  
 Mallinckrodt Fund  
 McDonnell Douglas  
 Foundation  
 Mobil Foundation  
 National Distillers &  
 Chemical Corp.  
 North American Philips  
 Corp.  
 Occidental Petroleum  
 Charitable Foundation  
 Inc.  
 Peat, Marwick, Mitchell  
 Foundation  
 Phillips Petroleum  
 Foundation Inc.  
 Premark International  
 Scott Paper Co.  
 Foundation  
 Shell Cos. Foundation  
 Singer Co. Foundation  
 Southwestern Bell  
 Foundation  
 Teledyne Charitable Trust  
 Foundation  
 Tenneco Inc.  
 Tesoro Petroleum  
 Texaco Philanthropic  
 Foundation  
 Valero Energy Corp.  
 USAA Group

**PRESIDENT'S CLUB**

Aetna Life & Casualty  
 Foundation, Inc.  
 Albert B. Alkek  
 American Bar Association  
 Arthur Anderson & Co.  
 Foundation  
 M. D. Anderson  
 Foundation

Atlantic Richfield Co.  
 Frank W. Baker  
 Elizabeth M. Barnes  
 Barshop Enterprises  
 Philip M. Barshop  
 Samuel E. Barshop  
 Don E. Beere  
 Barbara B. Benavides  
 Benson Community Fund  
 Thomas Benson  
 Celia Berwin Memorial  
 Foundation  
 Dr. Ernest H. Besch  
 Ronald C. Bird  
 Thomas B. Black  
 Ward T. Blacklock Jr.  
 Donald N. Bonacci  
 George W. Brackenridge  
 Foundation  
 Alice S. Briggs  
 Broadway National Bank  
 Bruni Family Charitable  
 Trust  
 Mr. & Mrs. Gene Canavan  
 Paul E. Casseb  
 Solomon Casseb Jr.  
 James N. Castleberry Jr.  
 Amado F. Cavazos  
 Richard Cavazos  
 Edward V. Cheviot  
 Chevron U.S.A. Inc.  
 Club Sembradores De  
 Amistad  
 Daniel E. Costello Jr.  
 Douglas B. Cowan Jr.  
 John A. Cowan  
 Sidney W. Cowan  
 Kenneth L. Crosswell  
 Crum & Forster  
 Foundation  
 Joe G. Cumpian  
 Paul Daily Estate  
 Dr. & Mrs. Mark F. Dante  
 Datapoint Corporation  
 Dr. Donald W. Daut  
 Dean Witter Financial  
 Services  
 Ferdinand F. De  
 Arredondo  
 Del Monte Corp.  
 Dwin Dent  
 Diamond Shamrock  
 John L. Dieterle  
 William J. Dodds  
 Angelo J. Drossos  
 Thomas Drought  
 Charles E. Ebrum  
 Ray Ellison Sr.  
 Robert E. Engberg  
 Ernst & Whinney  
 Foundation  
 Exxon Educational  
 Foundation  
 Farmers Group, Inc.  
 Mr. & Mrs. H. Rugeley  
 Ferguson  
 William P. Francisco  
 Friends of St. Mary's  
 University Law Library  
 Frost National Bank  
 Fulbright & Jaworski  
 Gibbons Literary Club  
 Gill Savings Association  
 Eugene A. Gittinger  
 Cipriano F. Guerra  
 Gunn Oldsmobile-Saab  
 Judge Carol R. Haberman  
 Halo Distributing Co.  
 Judge George P. Hardy III  
 Rupert Hays  
 William Randolph Hearst  
 Foundation  
 A. Chris Heinrichs  
 Adolph L. Hernden  
 Ronald J. Herrmann  
 Gary L. Hill

Richard R. Hoffman  
 Barbara Becker House  
 Houston Endowment  
 Dr. John P. Howe  
 Elton M. Hyder III  
 James L. Ikard  
 Interfirst Bank  
 International Business  
 Machines  
 Charles W. Jenkins  
 Jocks Productions, Inc.  
 Stuart G. Johnston  
 Joe W. Jones  
 Dennis F. Juren  
 J. Patrick Kaine  
 Thomas C. Kayser  
 Edward B. Kelley  
 Robert L. Kelly  
 Joseph T. Kenny  
 Donald A. Knowlan  
 John F. Kramer  
 John S. Kusenberger  
 James C. Laffin  
 Erline Lagueruela  
 La Quinta Motor Inns, Inc.  
 Legan Charitable Trust  
 David M. Leibowitz  
 Jack P. Leon  
 Aloysius A. Leopold  
 Andrew J. Lewis III  
 Claude B. Lilly Jr.  
 Sister Grace Luther  
 Margaret M. Maisel  
 Pat Maloney  
 Marianist Trust  
 MBank Alamo  
 McCamish, Ingram,  
 Martin & Brown  
 Michael T. McClellan  
 Henrietta Montagna  
 Dr. Edwin L. Mueller  
 National Bank of  
 Commerce of San  
 Antonio  
 Nicholas and Barrera  
 Lawrence E. Noll  
 David G. Nolte  
 Christine Obriotti  
 Panhandle Producing Co.  
 Mance M. Park  
 Jack Pasqual  
 Park E. Pearson  
 George E. Pletcher  
 Gerald B. Pratt  
 Myra Stafford Pryor  
 Charitable Trust  
 Paul W. Reddy  
 Louis J. Richter  
 Richters' Bakeries  
 Robert F. Ritter  
 Mark J. Rosenfield  
 Robert S. Rosow  
 Joseph U. Rowley Trust  
 Karl L. Rubinstein  
 St. Mary's University  
 Alumni Association  
 San Antonio Bar Auxiliary  
 Mr. & Mrs. David A.  
 Schlueter  
 Edwin M. Schmidt  
 A. A. Schroeder  
 William M. Schuh  
 James T. Schultz  
 Sears-Roebuck Foundation  
 Shell Cos. Foundation  
 Philip J. Sheridan  
 Tom J. Sheridan  
 Shelton Smith  
 James H. Sorenson  
 Frank R. Southers  
 Southwestern Bell  
 Telephone  
 Doris B. Spector  
 Reagan Stone  
 Strake Foundation  
 Louis H. Stumberg

Arnold A. Sturm Jr.  
 Daniel Sullivan IV  
 Tesoro Petroleum  
 Texaco Philanthropic  
 Foundation  
 Texas Independent  
 College Fund  
 Don F. Tbbin  
 Charles A. Tboundze  
 Michael J. Trask  
 Leslie W. Tschoepe  
 Tom & Mary Turner  
 Philanthropic  
 Foundation  
 United Television Inc.  
 USAA Group  
 Valero Energy Corp.  
 Pedro E. Viyao  
 Thomas W. Wallace  
 James R. Warncke  
 Peyton D. Waters Jr.  
 Merritt R. Wentz  
 Robert V. West  
 Joseph M. Westheimer  
 James E. Windlinger  
 Zachry Foundation  
 Roger L. Zeller

**FACULTY & STAFF**

Barry E. Abrams  
 Cecilia T. Aguilar  
 Marta B. Alderete  
 Joe E. Anderson  
 Viola D. Arellano  
 Maria Arriaga  
 Robert B. Babcock  
 Alice F. Barrientes  
 Kathy A. Bell  
 Gerry W. Beyer  
 Thomas B. Black  
 Fay Bourgeois  
 Rick A. Bruhn  
 Caroline Byrd  
 Ruben Candia  
 Daniel J. Carey  
 Dora M. Carey  
 James Carpenter  
 Alfredo G. Cavazos  
 Jose M. Cimadevilla  
 Mark Cochran  
 Angelina M. Cortez  
 Rose Marie Cutting  
 Donald E. Davis  
 Samuel de los Santos  
 Estrella C. Dietz  
 David A. Dittfurth  
 Rose Mary Droke  
 Douglas B. Endsley  
 Mary G. Etlinger  
 Donald J. Ferguson  
 Paul F. Ferguson  
 Richard W. Ferguson  
 Frances M. Fernandez  
 Homer Fetzler  
 Charles J. Fey  
 Hugh J. Fleming  
 Henry Flores  
 William Francisco  
 Ronald F. Gianotti  
 Jo Ann Gomez  
 Gary H. Gordon  
 Donald Haney  
 Gloria E. Hanna  
 Margaret Harrington  
 Joan R. Henarie  
 Paul H. Hewitt  
 William L. Hicklin  
 Peggy M. Huntzinger  
 Charles Jenkins  
 Henry F. Johnson  
 Vincent R. Johnson  
 Anthony Kaufmann  
 Francis Keller  
 Adrian Kline  
 David R. Krause  
 Candace J. Kuebker

Joan M. Lamm-Tennant  
 Margarita Leal  
 Stephen A. Leal  
 Harvey A. Legate Jr.  
 Eric Leidlein  
 Carmen G. Leija  
 Gene W. Lene  
 Edward J. Lodell  
 Richard J. Long  
 Olga V. Luna  
 Sister Grace Luther  
 Tomasa S. Martinez  
 Ronald R. Mellen  
 Diane R. Mendoza  
 Tomas M. Mendoza  
 Herman A. Meyer Jr.  
 Jack B. Miller  
 Carmen U. Mireles  
 John P. Moore  
 Raquel M. Moreno  
 Thomas A. Mote Jr.  
 William Newmyer  
 Sophie C. Olfers  
 Claudine Omillian  
 Marcelino Partida  
 Martin Partida  
 Dianne L. Pipes  
 Sam F. Prado  
 Gerald Pratt  
 Richard S. Pressman  
 Ernest A. Raba  
 Juan Ramirez  
 Gerald S. Reamey  
 Miguel B. Reyes  
 Bahman Rezaie  
 Daniel C. Ridney  
 Roy E. Robbins  
 Bonita K. Roberts  
 J. Rodriguez  
 Olivia F. Rodriguez  
 Pedro S. Romo  
 Ramiro Ruiz  
 Steven D. Ruzicka  
 Carlos Sanchez  
 Robert S. Sandefur  
 Carmen Saucedo  
 David Schlueter  
 Edwin Schmidt  
 John Schmolesky  
 Marian C. Schultz  
 Leonard W. Scott  
 Willibrord T. Silva  
 Vicki H. Sledge  
 Cynthia Sluder  
 Matilde K. Stephenson  
 Robert L. Summers Jr.  
 Rosemarie Synek  
 William M. Tam  
 Perly L. Thomas  
 Samuel Thompson III  
 Jerry Todd  
 Aurelia S. Vincent  
 Daniel J. White  
 Elizabeth A. Whiteman  
 Betty Witt  
 Fernando A. Yarrito  
 Ebrahim Yazdani  
 Dora A. Ybarra  
 Sara M. Ybarra  
 Richard M. Yerly  
 Beatrice S. Ziegler

**CAPITAL CAMPAIGN**

Barry E. Abrams  
 George Adamson  
 Marta B. Alderete  
 Marcus J. Altenburger  
 Viola D. Arellano  
 Maria Arriaga  
 Robert B. Babcock  
 David P. Bailey  
 Frank W. Baker  
 Joseph A. Baller  
 Alice F. Barrientes  
 Barshop Enterprises  
 Philip M. Barshop

Samuel E. Barshop  
 Richmond Bartella  
 Deborah A. Bauer  
 Kathy A. Bell  
 Dr. Ernest H. Besch  
 Robert A. Biasioli  
 Ernest L. Boddien  
 Edmond W. Boenisch  
 Fay Bourgeois  
 Dr. Thomas J. Brieske  
 Caroline Byrd  
 Claudia D. Calandrella  
 Ruben Candia  
 Charles E. Cantu  
 Edmond Cardenas  
 Ricardo L. Cardenas  
 Daniel J. Carey  
 Dora M. Carey  
 James B. Carpenter  
 Chevron U.S.A., Inc.  
 Jose M. Cimadevilla  
 George S. Coronado  
 Angelina M. Cortez  
 Michael Cox  
 Charles E. Crain Jr.  
 Rose Marie Cutting  
 Vegie M. Darden  
 Francisco G. Davila  
 Donald E. Davis  
 Marlene Davis  
 Samuel de los Santos  
 Charles J. Doerr  
 Richard Dollus  
 Jesse P. Dominguez  
 Christina Dunnell  
 Hubert J. Ebe  
 Charles E. Ebrum  
 Douglas B. Endsley  
 Robert E. Engberg  
 James E. English Sr.  
 Joseph Estrello  
 James E. Fairley  
 Frances M. Fernandez  
 Homer Fetzer  
 Mr. & Mrs. Hugh J. Fleming  
 Henry Flores  
 Robert C. Flores  
 Frost National Bank  
 Henry L. Galindo  
 Ronald F. Gianotti  
 Kevin J. Gilhooly  
 Ann Marie Girardot  
 Jo Ann Gomez  
 Gary H. Gordon  
 Paul G. Groff  
 Michael C. Grumich  
 Donald Haney  
 George P. Hardy  
 Margaret Harrington  
 William Randolph Hearst Foundation  
 R. R. Hernandez  
 Ronald J. Herrmann  
 Michael L. Herzik  
 Paul H. Hewitt  
 William L. Hicklin  
 Interfirst Bank  
 Charles W. Jenkins  
 Anthony Kaufmann  
 Francis Keller  
 Edward B. Kelley  
 Leonard A. Keyes  
 Donna M. Koogle  
 Candace J. Kuebker  
 David J. Kvapil  
 Joan M. Lamm-Tennant  
 Peter F. Laplante  
 La Quinta Motor Inns, Inc.  
 Harvey A. Legate Jr.  
 Eric Leidlein  
 Carmen G. Leija  
 Gene W. Lene  
 Edward J. Lodell  
 Louis E. Loth  
 Antonio S. Lozano

Olga V. Luna  
 Terry M. Lurtz  
 Pat Maloney  
 Marianist Trust  
 Michael Martinez  
 MBank Alamo  
 Thomas F. McIlhenny  
 Ronald R. Mellen  
 Carmen U. Mireles  
 John P. Moore  
 Raquel M. Moreno  
 Thomas A. Mote Jr.  
 Denis B. Naeger  
 National Bank of Commerce of San Antonio  
 Michael J. Neri  
 Christine Obriotti  
 Sophie C. Olfers  
 Claudine Omillian  
 Panhandle Producing Co.  
 Paul R. Paquelet  
 Mance M. Park  
 Marcelino Partida  
 Amanda C. Perez  
 Dianne L. Pipes  
 Fernanco B. Posada  
 Sam F. Prado  
 Gerald B. Pratt  
 Richard S. Pressman  
 Myra Stafford Pryor  
 Chairtable Trust  
 Juan Ramirez  
 Joe H. Ramon  
 Roger D. Reader  
 Miguel B. Reyes  
 Bahman Rezaie  
 Louis J. Richter  
 Daniel C. Rigney  
 Roy E. Robbins  
 John M. Robison  
 J. Rodriguez  
 Olivia F. Rodriguez  
 Pedro S. Romo  
 Raul Rosales  
 Robert S. Rosow  
 Ramiro Ruiz  
 Brian J. Rutkowski  
 Steven D. Ruzicka  
 St. Mary's University Alumni Association  
 Robert S. Sandefur  
 Carmen Saucedo  
 Sylvia Saucedo  
 Edwin M. Schmidt  
 Marian C. Schultz  
 Robert E. Seng  
 Benjamin F. Sharp  
 Shell Cos. Foundation  
 Willibrord T. Silva  
 Vicki H. Sledge  
 Cynthia Sluder  
 Mildred F. Smalley  
 Doris B. Spector  
 Matilde K. Stephensen  
 Strake Foundation  
 William M. Tam  
 Perly L. Thomas  
 Samuel Thompson III  
 Jerry Todd  
 Arthur C. Troilo  
 United Television, Inc.  
 Valero Energy Corp.  
 Jose F. Vasquez  
 Rodolfo L. Villarreal  
 William A. Warner  
 Daniel J. White  
 Fernando A. Yarrito  
 Ebrahim Yazdani  
 Dora A. Ybarra  
 Sara M. Ybarra  
 Richard M. Yerly  
 Roger L. Zeller  
 Beatrice S. Ziegler

**RESTRICTED GIFTS**

James H. Acosta  
 Asa A. Adair  
 Mary A. Adamcik  
 Aetna Life & Casualty Foundation  
 Cecelia T. Aguilar  
 Alamo Lawn Services  
 Stewart J. Alexander  
 Albert B. Alkek  
 Douglas A. Allison  
 American Bar Association  
 Arthur Anderson & Co. Foundation  
 Joe E. Anderson  
 M. D. Anderson Foundation  
 Allen M. Angelus  
 Anonymous  
 Gilbert Arias  
 Atlantic Richfield Co.  
 BHK Investments Inc.  
 Jeffery A. Babcock  
 Jesus Ballarta  
 James S. Barko II  
 Barons & Friends  
 Gary E. Bartlett  
 Ken Batchelor Co. Inc.  
 Deborah A. Bauer  
 Robert C. Belk  
 Benson Community Fund  
 Steven J. Berry  
 Martha Tobin Bersch  
 Gerry Beyer  
 Charles H. Billings  
 Bird & Noll  
 Ronald C. Bird  
 Thomas B. Black  
 William E. Black  
 Ward T. Blacklock  
 Lawrence J. Blume  
 Gerald A. Boerner  
 Bolner Meat Co.  
 H. M. Booker  
 George W. Brackenridge  
 Foundation  
 William M. Braden  
 Gary Brandon  
 Dr. Robert Braun  
 Alice S. Briggs  
 John C. Broadhurst  
 Dick T. Brown  
 Dr. Louis Brown  
 Michael A. Brown  
 Rich A. Bruhn  
 Bruni Family Charitable Trust  
 Marjorie E. Bryant  
 Calvin C. Bucholtz Jr.  
 Leah Bumpus  
 Homer H. Burkett  
 William B. Burnett  
 Joan M. Burras  
 Roger G. Burton  
 Judge Shirley W. Butts  
 Judge Carlos C. Cadena  
 Richard K. Caldwell  
 Aaron S. Campbell  
 Campbell's Soups  
 Mrs. Gene Canavan  
 Carl E. Cantrell  
 Dan L. Carabin  
 John M. Caraway  
 James B. Carpenter  
 Carvajal Surgical Medical & Pharmacy  
 Paul E. Casseb  
 Solomon Casseb Jr.  
 James N. Castleberry Jr.  
 Alfredo G. Cavazos  
 Amado F. Cavazos  
 Richard Cavazos  
 Mr. & Mrs. Thomas N. Chaney  
 Judge Alfonso Chapa  
 Alton C. Chapman

Edward V. Cheviot  
 Martin J. Chiuminatto Jr.  
 Kathleen B. Ciliske  
 Teresa J. Clingman  
 Club Sembradores De Amistad  
 Mark W. Cochran  
 Anne M. Cofer  
 Columbia Industries Inc.  
 Ben Cooper  
 Douglas B. Cowan  
 John A. Cowan  
 Sidney W. Cowan Jr.  
 Frank H. Crain  
 Gregory W. Crane  
 Dr. James Crawford  
 Kenneth L. Crosswell  
 Rosalina S. Cruz  
 Joe G. Cumpian  
 William P. Cunningham  
 Charles Curione  
 Paul Daily Estate  
 Dr. & Mrs. Mark F. Dante  
 Dr. Donald W. Daut  
 Mr. & Mrs. Willard Deason  
 Deloitte, Haskins & Sells  
 Deloitte, Haskins & Sells Foundation  
 Delta Alpha Delta Law Partners  
 Dwain Dent  
 Diamond Shamrock  
 Sylvia L. Diaz  
 John C. Dickey  
 Estrella C. Dietz  
 Jane K. Dingivan  
 David A. Dittfurth  
 Monica L. Donahue  
 Helen and Mae Donohoo  
 Mary Ann Dorantes  
 Rose Mary Droke  
 Angelo J. Drossos  
 Thomas Drought  
 Waymon G. Dubose Jr.  
 Michael T. Dwyer  
 Edward V. Dylla  
 Charles E. Ebrum  
 Daniel P. Ehrenreich  
 John Embry  
 Mary E. Endres  
 Ernst & Whinney Foundation  
 Dr. Ramiro P. Estrada  
 Mary G. Etlinger  
 Exxon Educational Foundation  
 Farmers Group Inc.  
 Kate B. Feiner  
 Donald J. Ferguson  
 Mr. & Mrs. H. Rugeley Ferguson  
 Janet R. Ferguson  
 Paul F. Ferguson  
 Richard W. Ferguson  
 Ray J. Fernandez Jr.  
 Charles J. Fey  
 James Fish  
 Charles J. Fitzpatrick  
 Daniel A. Fitzpatrick  
 Mr. & Mrs. Hugh J. Fleming  
 Patrick J. Fogarty  
 Four Seasons Pest Control  
 William P. Francisco  
 Mr. & Mrs. Gary L. Frantzen  
 Mr. & Mrs. Alan J. Fredian  
 Friends of St. Mary's Law Library  
 Charles S. Frigerio  
 Patrick D. Furlong  
 Mr. & Mrs. Val Furth  
 Galo Garcia  
 Barbara B. Gartner  
 Ricardo Garza

General Dynamics Corp.  
 Mr. & Mrs. Kevin Genthner  
 Edwin Gerwell  
 W. E. Ghedi  
 Gibbons Literary Club  
 Melynda Giesenschlag  
 Michael S. Goodrich  
 Kathleen M. Gray  
 Sam G. Griffith  
 Groce, Locke & Hebbon  
 Stephen Grothues  
 Eliud Guerra  
 Joe M. Guerra  
 Gunn Oldsmobile-Saab  
 Richard Gutierrez  
 Chris A. Hale  
 James R. Hale  
 Halo Distributing Co.  
 Glen D. Halsell  
 Lawrence C. Hammer  
 Gloria E. Hanna  
 Steven N. Harkiewicz  
 Daniel J. Harlan  
 Patricia L. Harrison  
 Dr. & Mrs. George G. Harvey  
 Heffernan Supply Co. Inc.  
 A. Chris Heinrichs  
 Edward F. Hensley  
 Adolph L. Hernden  
 Gary Hill  
 Mr. & Mrs. Byron E. Hollinger  
 George E. Holmes  
 Larry J. Horn  
 Barbara Becker House  
 C. Gilbert House  
 Houston Endowment  
 John F. Hunt  
 Jack D. Hunter II  
 Peggy Huntzinger  
 Mr. & Mrs. Howard H. Hutsell Jr.  
 Elton M. Hyder III  
 Dr. & Mrs. David Jacobson  
 David G. Jayne  
 Charles W. Jenkins  
 Jocks Productions Inc.  
 Henry Johnson  
 Henry F. Johnson  
 Vincent R. Johnson  
 Dr. William H. Johnson  
 Stuart G. Johnston Jr.  
 Robert S. Jouett  
 KDJ Insurance Agency  
 KSAT-TV  
 Timothy E. Kaczkowski  
 Thomas C. Kayser  
 Philip Kazen Jr.  
 Robert L. Kelly  
 Jane P. Kennedy  
 Joseph T. Kenny  
 Donald F. Killingsworth  
 Dr. Adrian L. Kline  
 Robert D. Klock  
 David C. Kocurek  
 James Koett  
 Martin R. Korte  
 John F. Kramer  
 David R. Krause  
 Dr. William A. Kuebker  
 John S. Kusenberger  
 James C. Laflin  
 Erlene Laguere  
 Margarita Leal  
 Stephen A. Leal  
 David M. Leibowitz  
 Jack P. Leon  
 Aloysius A. Leopold  
 Dana A. Lester  
 Andrew J. Lewis III  
 Claude B. Lilly Jr.  
 John H. Lipscombe  
 Dr. Steven Logsdon  
 Richard J. Long

A. F. Longoria  
 Ricardo E. Longoria  
 Donald J. Luther  
 Sister Grace Luther  
 Margaret M. Maisel  
 Pat Maloney  
 Tim Maloney  
 Edward Malouf  
 Tomasa S. Martinez  
 Tony Martinez  
 Mary Ann Photography  
 Norman E. Maryan  
 Thomas F. Mastin IV  
 Cynthia A. Mateker  
 Jayne M. McCabe  
 John S. McCabe  
 McCamish, Ingram,  
 Martin & Brown  
 Michael T. McClellan  
 Malcolm U. McClinchie  
 M'Liss McClinchie  
 Patrick J. McElyea  
 Kevin J. McGinnis  
 Dr. Nelson T. Meckel  
 Medina Valley Seed &  
 Fertilizer Inc.  
 Diane M. Mendoza  
 Tomas M. Mendoza  
 Marsha L. Metzdorff  
 Herman A. Meyer Jr.  
 Mr. & Mrs. Melvin L.  
 Michalczak  
 Bill Miller Bar-B-Q  
 Enterprises  
 Jack B. Miller  
 Joseph E. Mills  
 Pete Morales Jr.  
 Moreno & Sons  
 Automotive  
 Shayne D. Moses  
 Travis M. Moursund  
 Michael K. Muckleroy  
 Dr. John W. Muehl  
 Judge Thomas C.  
 Mummert III  
 Agapito Muniz  
 Dr. & Mrs. Richard M.  
 Nacewski  
 William A. Newmyer  
 Nicholas and Barrera  
 Dorothy M. Nichols  
 Terry B. Nickel  
 Lawrence E. Noll  
 David G. Nolte  
 North Park  
 Lincoln-Mercury  
 Norwegian Club  
 Scot W. O'Brien  
 Morgan D. O'Connor  
 Ernest W. Odum  
 Robert J. Oertling  
 Dr. Joseph M. Ojile  
 Order of Foresters  
 Gerald T. Osborn  
 Scott D. Osborn  
 Padgett, Stratmann & Co.  
 Darrel Parrisher  
 Jack Pasqual  
 Martin Partida  
 Buel E. Pearson  
 Park Pearson  
 Peat, Marwick, Mitchell  
 Foundation  
 Pfizer Inc.  
 Thomas M. Pickford  
 David H. Pickus  
 James F. Pigg  
 Minnie Stevens Piper  
 Foundation  
 George E. Pletcher  
 James P. Plummer  
 Plunkett, Gibson & Allen  
 Dr. John B. Powell  
 Gerald B. Pratt  
 Premark International  
 Price Waterhouse

Mr. & Mrs. Glenn R.  
 Puckett  
 Ernest A. Raba  
 Kim Erika Ramsey  
 Gerald S. Reamey  
 Paul W. Reddy  
 Dr. Kim D. Reed  
 Patricia A. Reed  
 Judge Blair Reeves  
 Dr. William M. Reeves  
 Reibach and Qualline  
 Marilyn A. Ritchey  
 Robert F. Ritter  
 Judge Raul Rivera  
 Rene Rivera  
 Robert E. Robbins  
 Bonita K. Roberts  
 Lydia R. Rodriguez  
 Raymond C. Rodriguez  
 Dr. Victorio Rodriguez  
 Mr. & Mrs. S. J. Rohats  
 Mark J. Rosenfield  
 Joseph U. Rowley Trust  
 Karl L. Rubinstein  
 S. W. Gem & Mineral  
 Society  
 James M. Sadler  
 Dr. Candelario Saenz  
 St. Mary's Athletic  
 Booster Club  
 St. Mary's University  
 Alumni Assoc.  
 St. Mary's University  
 Junior Guild  
 San Antonio Bar Auxiliary  
 Carlos Sanchez  
 Patrick M. Sanders  
 Sawtelle, Goode, Davidson  
 & Troilo  
 Michael L. Scanlon  
 John F. Scarzafava  
 Mr. & Mrs. David A.  
 Schlueter  
 John M. Schmolesky  
 Alfred A. Schroeder  
 Mr. & Mrs. Stanley  
 Schroeder  
 William M. Schuh  
 James T. Schultz  
 Mr. & Mrs. Walter  
 Schwarz  
 David A. Scott  
 Leonard W. Scott  
 Dr. Tony Scott  
 Philip J. Sheridan  
 Judy K. Shields  
 Phyllis B. Siegel  
 John M. Smartt Jr.  
 Gerald V. Smith  
 James M. Smith  
 Dr. John Smith  
 Ms. Leslie J. Smith  
 Shelton Smith  
 Frank R. Southers  
 Southwestern Bell  
 Foundation  
 Southwestern Bell  
 Telephone  
 Mr. & Mrs. Raymond  
 Sparks  
 Bettis E. Specia  
 John J. Specia Jr.  
 Jonathan S. Steffy  
 Rebecca Stevens  
 Sam Bell Steves Family  
 Foundation  
 Alan L. Stinson  
 Reagan Stone  
 Frederick L. Streck III  
 Robert L. Summers Jr.  
 Sunshine Nut Co.  
 Lori A. Swete  
 Rosemarie Synek  
 Lee M. Taft  
 Hugh B. Tagert  
 Temple Inc.

James E. Thailing  
 Cruz M. Tijerina  
 Bobby F. Tiller Jr.  
 Tinsman & Houser Inc.  
 Don F. Tobin  
 Laura J. Tobci  
 J. Terry Topham  
 Frank Toth  
 Charles A. Tbudouze Sr.  
 Ramon R. Trevino Jr.  
 William S. Trivette  
 George R. Tuck  
 Tbm and Mary Turner  
 Philanthropic Trust  
 Donald J. Twombly  
 Arthur R. Underwood Jr.  
 O. Elliott Ursin  
 Elizabeth F. Whiteman  
 Valero Energy Corp.  
 Jane D. Van Leeuwen  
 Lisa Van Leeuwen  
 Aurelia S. Vincent  
 Pedro E. Vijayo  
 Betsy H. Walker  
 Dr. Carl J. Walker  
 Mary & Alice Wall  
 Thomas W. Wallace  
 James R. Warncke  
 Peyton D. Waters Jr.  
 James A. Watkins Jr.  
 W. Douglas Weisbruch  
 Wayne L. Weige  
 Thomas D. Wells III  
 Merritt R. Wentz  
 Joseph M. Westheimer Jr.  
 Elizabeth F. Whiteman  
 Wanda J. Whittenburg  
 Donald J. Williams  
 Randolph G. Wilson  
 James E. Windlinger  
 Betty Witt  
 Elizabeth Wolman  
 Richard D. Woods II  
 Jonathan Yedor  
 Hansell N. York III  
 Mr. & Mrs. Benjamin F.  
 Youngblood  
 West Zolt

**BOOSTER CLUB**  
 Mr. & Mrs. John Allen  
 F.W. Baker  
 Larry Balle  
 Edward & Carolyn Banz  
 Tom Bass  
 Mr. & Mrs. Tbm Beck  
 David & Donna  
 Berchelmann Jr.  
 Bernard Boeselt  
 Bolner's Inc.-Richard  
 Bolner  
 Mr. & Mrs. Norman Bond  
 Edward & Chris Boyle  
 John C. Brown  
 Bill Bryden  
 Frank and Glenda  
 Bumpus  
 Lt. Col. & Mrs. Homer  
 Burkett  
 Fred Campbell  
 Dan & Terri Carey  
 Robert J. Carey  
 Pete & Donna Carroll  
 Pedro & Christian Casarez  
 Bart Castelli  
 Frank & Wanda Cernosek  
 Bobby Corbo  
 Dr. Fred Corley  
 Tim & Jo Cox  
 David Craft  
 Greg & Patricia Crane  
 Bro. Andrew Cremer, S.M.  
 Tbm Cribbin  
 A. B. Crosby Sr.  
 A.B. & Mary Anne  
 Crosby Jr.

Mr. & Mrs. Doug Cross  
 Kenneth Crowell  
 Mr. & Mrs. Anthony  
 Cubriel  
 Charles Cumpian  
 Joe Cumpian  
 David & Brenda DeCock  
 Mike DeLosSantos  
 Joe & Maria DeLuna Jr.  
 Angelo & Norma  
 Depasquale  
 Bob & Kathy Derryberry  
 Roland DeWinne  
 Aurelio Diaz  
 David & Paula Dikson  
 Douglas E. Dilley  
 Lt. Col. & Mrs. Gorrest  
 Dressler Jr.  
 Kathy Droke  
 Bob Dupnick  
 Edward Vincent Dylla  
 Lt. Col. & Mrs. Charles  
 Eads  
 Charles & Margie Eckert  
 Joseph & Nellene Ehrler  
 Bob Engberg  
 Nelson Finch  
 Charles & Diane  
 Fitzpatrick  
 Mike & Kathy Flinn  
 John & Judy Gardetto  
 Charles & Jo Ann Garoni  
 John & Gloria Garoni  
 Gene Gittinger  
 Leonard J. Gittinger Jr.  
 Gene & Henrietta Gray  
 Royce & Pat Groff  
 Mr. & Mrs. Mark Grothues  
 Raul A. Guerra  
 Mr. & Mrs. Albert  
 Guzman  
 Arthur Guzman  
 Dr. & Mrs. Peter Hansen  
 James S. Harrington  
 Stanley & Louise Havelka  
 Donald Hayden  
 Danny & Jane Heep  
 Paul & Betty Heffernan  
 A. Chris Heinrichs  
 Mr. & Mrs. James Heiser  
 John U. Hemmi  
 Arthur Hernandez  
 A.R. Herrera Jr.  
 Frank Herrera Jr.  
 Lt. Col. & Mrs. Paul E.  
 Hibberd  
 Alice Hodge  
 John Hohman  
 Mr. & Mrs. J.B. Honea  
 Royal K. Harrington  
 Pete Infante  
 Sonny Infante  
 Timothy Johnson  
 Mr. & Mrs. Larry Karam  
 Solomon J. Karam Jr.  
 Harold & Angie Keller  
 Dr. & Mrs. Daniel Kellum  
 Mr. & Mrs. Gerald Kempf  
 Mr. & Mrs. Mark Kempf  
 Joseph T. Kenny  
 Gary Klasing  
 Patrick Klasing  
 David Koenig  
 James & Rita Koett  
 Dr. & Mrs. Bill Kuebker  
 Candy Kuebker  
 Mr. & Mrs. Marvin Kuntz  
 Tim Lenahan  
 Col. James Locke  
 Alma Lopez  
 Laurence & Joan Lyons  
 Donald Mach  
 Mr. & Mrs. Chris Maguire  
 Bob & Carmen Mason  
 Thomas McCarty  
 John & Susan McNally

Andrew Meurer  
 Buddy & Anna Meyer  
 Fred Meyer  
 Harold & Joyce Mills  
 Willard & Dorothy  
 Monsen  
 Jerry Montalbo  
 Robert Montalbo  
 Leticia Morales  
 Patrick Morrissey  
 Truman & Mary Neal  
 Tad Neutze  
 Carl A. Nicholis  
 Nick C. Nicholis  
 Larry & Patsy Noll  
 Harry O'Brien  
 Andy Obriotti  
 Joseph & Mary Ojile  
 Maurice & Martha  
 O'Keefe Jr.  
 Branard O'Neal  
 Richard & Amy O'Neal  
 Nick & Beverly Pantuso  
 Chris Parma  
 Leonard J. Patterson  
 Robert S. Pavlic, M.D.  
 Jim Pollard  
 Jim Porsche  
 Ronnie & Doris Prather  
 Manuel Quinones  
 Jr., M.D.  
 David Rains  
 Mike & Nancy Reimherr  
 John J. Rheinberger  
 Judge Raul Rivera  
 Anthony & Loretta  
 Sarosiek  
 Mickey & Janice Schott  
 Brian K. Schroeder  
 W.J. Sebera Sr.  
 Phil Sheridan  
 Tom J. Sheridan  
 Alex & Charlotte Smith  
 Terry & Adele Sparrow  
 Mide & Priscila Speight  
 George Stehling  
 Glennis W. Stein  
 James & Jane Sweeney  
 Stephen P. Takas Jr.  
 Chuck & Susan Taylor  
 Mario Trevino  
 Jim Tsakopoulos  
 Glynn Tschirhart  
 Les Tschoepe  
 Jerry Tyson  
 Danny Van De Walle  
 Glenn Villafranca  
 A. H. & Nancy Vorpahl  
 Carl Wanke  
 Douglas & Anna Wealty  
 Dorin & Mona White  
 Cpt. & Mrs. Melvin  
 Wiggins  
 Virginia J. Wildes  
 John & Rita Wilhelm  
 Warren & Teresa Wolf  
 Ronald & Tomasine  
 Womack  
 Charlie & Theresa Young  
 Joyce B. Zapata  
 James & Shirley  
 Zimmerman  
 David Zolecki



ST. MARY'S UNIVERSITY



One Camino Santa Maria  
San Antonio, Texas 78284-0400

## DISTINGUISHED ALUMNUS NAMED

*Military Leader Comes Home*



*Lt. Gen.  
William H.  
Schneider  
(BBA '55),*

commander of the Fifth U.S. Army, Fort Sam Houston, San Antonio, has been selected by the Alumni Association as the university's Distinguished Alumnus of 1988.

He will be honored at a dinner in February.

Schneider assumed command of the Fifth Army on May 29, 1987.

A native of San Antonio, he is a 1951 graduate of Central Catholic Marianist High School.

As a student in the ROTC program at St. Mary's, Schneider was named a Distinguished Military Graduate. He was commissioned a second lieutenant in the field artillery. His further education included a master's degree in industrial personnel management from George Washington University in 1970.

After graduating from St. Mary's with a degree in business economics, Schneider first served as an instructor at the Army Air Defense School, then in Greenland, Fort Lewis and Fort Bliss.

Overseas duty took him to Hawaii in 1964 and Vietnam in 1965.

Returning stateside in 1967, his various assignments included chief of the Training Division, Operations and Training Office, Fort Sill, Okla., and assistant executive officer to the deputy chief of staff for plans and operations at the Pentagon.

His travels in the '70s included service at Fort Hood, Texas; command of the 25th Infantry Division Artillery in Hawaii; a Pentagon appointment as director of Special Inspections for Army Nuclear Matters in the Office of the Inspector General; and chief of staff with the Army Material Command.

Returning to Hawaii for a tour of duty in 1982, Schneider rose to deputy commander-in-chief and chief of staff, U.S. Pacific Command. His decorations include Defense Distinguished Service Medal; Legion of Merit (with Oak Leaf Cluster); three Air Medal awards; and the Army Commendation Medal (with Oak Leaf Cluster).

## NEW PROGRAMS FOR ALUMS

Imagine. For just a few minutes put yourself back at St. Mary's—studying for midterms, chanting at Rattler games, philosophizing with friends in the Pecan Grove, and greasing bodies during Greek Week.

Those memories become more vivid when alumni return to campus for Homecoming Oyster Bake each spring. But this year the Alumni Association is introducing new programs which will give graduates two more reasons to return.

### Academic Affairs

St. Mary's has some very impressive sages right on campus. The Alumni Association is initiating a speakers' program which will tap these resources. The idea is to invite alumni to return to the classroom (some look much better than you may remember!) to hear faculty speak on contemporary issues.

### Student/Alumni Relations

Students should feel good about St. Mary's and feel good about being alumni one day. The newly established mentor program matches students with

alumni professionals, providing both groups opportunities to share ideas and to experience each other's worlds. Students may spend a day in the workplace and alumni may come back to campus for a day in school. Activities are left to the decision of each mentor/student pair.

*by Diane Abdo Noll (B.A. '72)  
President, Alumni Association*

### *Your Alumni Association is active and moving.*

The scholarship endowment has swelled to \$600,000 (thanks to successful Fiesta Oyster Bakes); and annual programs honoring faculty, athletes and community leaders keep St. Mary's alumni in the spotlight.

There is no need for your memories to fade. The Alumni Association's new programs provide additional opportunities for you to come back to campus—back to good friends, back to good teachers, and back to a campus that feels like home.

### Upcoming Alumni Activities

February	Distinguished Alumnus Dinner
April 8-10	Homecoming Weekend <i>includes:</i> <i>Reunions for Classes of '38, '63, '68, '78</i> <i>Homecoming Oyster Bake</i> <i>Athletics Hall of Fame</i>
April 16	Fiesta Oyster Bake

### Keep in Touch

For activities for alums in your hometown, look for mail from your local chapter, or call your chapter president.

In Dallas/Fort Worth: Rudy Reyes (214) 630-5000  
In Houston: Chris Horner (713) 622-0676  
In Laredo: Joe Laurel (512) 722-4949  
In St. Louis: Mike Cox (314) 965-7704

## 1938

*Class of 1938 Reunion to be held April 9, 1988*

**Solomon Casseb Jr.** (BA '38), San Antonio, received the 1987 Texas Bar Foundation's Outstanding Jurist Award.

**Roy L. Reinartz** (BA '38), San Antonio, retired U.S. Naval Reserve, was a guest speaker at the 15th anniversary celebration of the American Association of Retired Persons.

## 1946

**Pat Legan** (BA '46, JD '46), San Antonio, was selected to serve on the City Public Service Board.

## 1951

**Angelo J. Drossos** (Class of '51), San Antonio, was named a member of the Editorial Advisory Board for the San Antonio Light newspaper.

**Edward R. Hicks** (BA '51), San Antonio, received the Air Force Military Personnel Center Civilian Award for outstanding professional services at Randolph Air Force Base.

**Blair Reeves** (JD '51), San Antonio, was honored as the Outstanding Disabled Veteran of the Year in the state of Texas and recognized nationally in Atlanta. He is an associate justice on the Court of Appeals, 4th Supreme Judicial District of Texas. He has been confined to a wheelchair for 42 years.

## 1953

**Maynard H. Braden** (BS '53), San Antonio, is now president/CEO of TriVest International Inc., an investment holding firm.

## 1954

**Adm. John H. Higginson** (BA '54), San Diego, Calif., assumed command of eight naval squadrons that include shore-based and sea-going units. He is responsible for 50 ships in San Diego and Long Beach, including the battleship Missouri.

## 1955

**Brother Jerry Bommer, S.M.** (BA '55), Fort Worth, assumed the position of Nolan High School principal July 1.

**Lt. Gen. William H. Schneider** (BBA '55), San Antonio, is the new commander of the Fifth U.S. Army, an eight-state Army region with headquarters at Fort Sam Houston.

**Rev. Joseph Tarrillion, S.M.** (BA '55), San Antonio, serves as chairman of the Theology Department and as executive director of the Marianist Forum at St. Mary's University.

## 1957

**Raymond H. Downs** (BA '57), San Antonio, has been named administrator of Baptist Medical Center.

**Carlos Madrid** (BBA '57), San Antonio, was elected to the board of the San Antonio area chapter of the American Red Cross.

## 1958

**Federico P. Gonzalez** (BS '58), Coral Gables, Fla., was transferred by Texaco to the company's Latin America/West Africa operations. He is a senior chemist.

## 1959

**Cliff Morton** (Class of '59), San Antonio, is chairman-elect for the Greater San Antonio Chamber of Commerce.

**Clarence Sobczek** (BBA '59, MA '68), San Antonio, was elected vice president of First City Bank-Central Park. He is manager of the credit department.

## 1960

**Ruben M. Escobedo** (BBA '60), San Antonio, was honored by the San Antonio Mexican Chamber of Commerce as an outstanding example of Hispanic achievement. A certified public accountant, he is the senior partner in Ruben Escobedo & Co., the largest Hispanic-owned CPA firm in the city.

## 1962

**Robert T. Bordelon** (BS '62, MS '73), San Antonio, is a sales associate with Coldwell Banker Residential Real Estate.

## 1963

*Class of 1963 Reunion to be held April 9, 1988.*

## 1965

**David C. Sharman** (BBA '65), Fort Worth, was named senior vice president and manager of the trust division of First Republic Bank-Fort Worth. He was formerly with First Republic Bank in Houston.

**J. Fred Wood** (BA, BS '65, MS '73), San Antonio, has formed J. Fred Wood and Associates, a computer consulting firm.

## 1966

**Robert J. Carabin** (BA '66), Port Lavaca, Texas, was inducted as rector of Grace Episcopal Church. He is a licensed counselor and a certified secondary school teacher.

**Arthur H. Schipul Jr.** (BA '66), U.S. Army physician, was promoted to lieutenant colonel and reassigned from chief, Obstetrics Service, Brooke Army Medical Center, Fort Sam Houston, San Antonio, to chief of obstetrics, 97th General Hospital, Frankfurt, West Germany.

## 1967

**John A. Longoria** (BA '67, JD '73), San Antonio, joined the law firm of Mendelsohn, Heidelberg, Longoria & Beer Inc. He is a county commissioner.

**Lawrence E. Noll** (BA '67, JD '72), San Antonio, has been appointed to serve as one of four Leon Valley Municipal Court judges.

**Bonnie E. Ornelas Symonds** (BA '67, JD '80), San Antonio, was recognized by the Small Business Administration as the National Small Business Woman Advocate of the Year. An attorney in private practice, she chairs the Substance Abuse Committee of the Mayor's Commission on the Status of Women.

**Leonard B. Veliz** (BBA '67), West Germany, is an Army major recently assigned to the finance division of the 21st Support Command.

## 1968

*Class of 1968 Reunion to be held April 9, 1988*

**Paul Granato** (BBA '68), San Antonio, is director of human resources at Fairchild Aircraft Corp., responsible for over 900 employees.

**Robert L. Mason** (BS '68), San Antonio, was elected a fellow of the American Statistical Association. He is a past president of St. Mary's Alumni Association and currently alumni representative on the board of trustees.

## 1969

**W. Pat Cunningham** (BA '69, MA '77), San Antonio, has published a booklet on life insurance that is distributed to the public through insurance agents. He specializes in insurance and retirement planning for Connecticut Mutual Cos.

**Tino Guerra Jr.** (BBA '69), San Antonio, has been appointed night magistrate for the City of San Antonio.

**Samuel Idrogo** (MBA '69), San Antonio, has been named to the advisory board of the San Antonio Light newspaper.

**David C. Keene** (BBA '69), Lubbock, has been promoted to senior vice president in charge of auditing at First National Bank.

**James E. McCall** (Class of '69), Pipe Creek, Texas, is in charge of property leasing activities at Bohn & Baer Management Co.

**Louis Sanchez** (BA '69), San Antonio, has been elected to the board of the San Antonio area chapter of the American Red Cross.

**David K. Whitaker** (BA '69), San Antonio, is director of research implementation at Santa Rosa Medical Center.

## 1970

**Leo Alvarado Jr.** (BA '70, JD '74), San Antonio, an attorney with Weir and Alvarado, has been named to the advisory board for Plaza Bank.

**Frank D. Johnson** (JD '70), San Antonio, has left his private law practice to serve as business manager for the Cornerstone Church in San Antonio.

**Gerald Uretsky** (BBA '70), San Antonio, has joined World Wide Realty-Castle Hills. He previously was a sales manager with Century 21.

## 1971

**Christine G. Dunnell** (BA '71), Columbia, Conn., has been appointed to the state superior court.

**Mike M. Hodges** (BBA '71, MBA '76), Carrollton, Texas, is a cable supervisor with Electronic Data Systems in Plano, Texas.

**Cornelia Salas Tolley** (BA '71), San Antonio, is an elementary school counselor with the San Antonio Independent School District.

## 1972

**John E. Bakke III** (JD '72), San Antonio, has been elected vice chairman of the board of Alamo Iron Works.

**Gina Mendez Sachs** (BA '72), San Antonio, has been appointed director of News and Information at the University of Texas at San Antonio.

## 1973

**Capt. Jonathan Cavanaugh** (BA '73), is chief of the Military Personnel Branch at Pease Air Force Base, N.H.

**Thomas J. Jordan** (JD '73), Honolulu, received an ethics award in journalism at the International Journalism Convention.

**Ernest J. Mora** (BBA '73), Laredo, has been named financial division leader for the United Way Campaign. He is executive vice president of NBC Bank of Laredo.

**Shelton E. Padgett** (JD '73), San Antonio, is a law partner in Kaufman, Becker, Clare & Padgett.

## 1974

**Todd Beebe** (MBA '74), San Antonio, is president/owner of the Beebe Co., an industrial real estate firm.

**Joan Lamm-Tennant** (BBA '74, MBA '77), San Antonio, has been appointed to a three-year term on the board of trustees of Humana Hospital in San Antonio.

**Carlos Lopez** (BA '74), San Antonio, is an assistant criminal district attorney in Bexar County.

**Ellen H. Pfeiffer** (BA '74), San Antonio, has joined Guy Chipman Co. as sales associate.

## 1975

**James P. Brennan** (JD '75), San Antonio, has been named assistant vice president of financial services at United Services Automobile Association.

**Rebecca Quintanilla Cedillo** (BA '75), San Antonio, is assistant director in the city of San Antonio's department of planning. She is married and has two children.

**Maj. John T. Hennessey** (BA '75), U.S. Marine Corps, was commended for dedication, loyalty and professional skill while stationed at Camp Pendleton, Calif.

**Nick Reynolds** (BBA '75), San Antonio, is chief of the International Logistics Division of the San Antonio Air Logistics Center.

**Nancy Arispe Roth-Boffy** (BA '75), San Antonio, was elected to the board of governors of Citizens for the Arts High School.

## 1976

**Gary A. Alexander** (BS '76), San Antonio, is a dentist in general practice.

**Christine Garcia** (BA '76), San Antonio, has joined the Catholic religious order of Sisters of Notre Dame.

**William T. Kaufman** (JD '76), San Antonio, has been certified as a civil trial law specialist.

**Charles W. Lutter Jr.** (JD '76), San Antonio, joined La Quinta Motor Inns Inc. as a senior corporate attorney.

**Col. Thomas E. Norris** (MS '76), San Antonio, has retired from the United States Air Force after more than 25 years of service.

**Paul E. Perry** (BA '76), San Antonio, a partner at Arthur Young & Co., has been elected to the board of directors of the Greater San Antonio Chamber of Commerce.

**Bryan D. Wright** (JD '76), San Antonio, is an attorney specializing in oil and gas law.

## 1977

**Carlos D. Cordova** (BA '77, MA '78), Laredo, is area manager responsible for marketing operations for Southwestern Bell Telephone Company.

**Joe Kobell** (MA '77), Dallas, sells residential real estate through Ebby Halliday Realtors.

## 1978

*Class of 1978 Reunion to be held April 9, 1988*

**Sgt. Joyce L. Barron** (BA '78), Houston, participated in "Team Spirit '87," a Republic of Korea/United States combined forces command exercise held in South Korea.

**Mary Brennan** (BA '78, JD '81), San Antonio, an associate with Cox & Smith, has been recognized for her work in the Pro Bono Law Project, an association of volunteers who provide free legal assistance to the poor.

**Donald F. Dutra** (BA '78), San Antonio, received an M.D. degree from the University of Texas Health Science Center at San Antonio and began a residency in physical medicine and rehabilitation.

## 1979

**Frank B. Burney** (JD '79), San Antonio, a partner with Martin, Shannon & Drought Inc., has been appointed to the Zoning Commission of San Antonio.

**Randy Dale** (JD '79), Abilene, Texas, has been named assistant district attorney in Taylor County.

**Mary Gwynn Etlinger** (BA '79), and **Robert E. Etlinger** (JD '79), Boerne, Texas, announce the birth of their first child, Zachary Clemens, on July 11, 1987. Mary is director of Alumni Relations at St. Mary's University. Bob is an attorney with Soules, Reed & Butts.

**Jenney C. Hill** (BBA '79), San Antonio, has joined Guy Chipman Co. as a broker-sales associate.

**Miguel A. Lugo, Jr.** (BBA '79), New York City, is a senior audit manager at Price Waterhouse.

**Patricia Mason** (BA '79), San Antonio, is associate executive director at Humana Women's Hospital-South Texas.

**Curtis T. Vaughn, III** (JD '79), San Antonio, has been elected chairman of the board and chief executive officer of Alamo Lumber Co.

## 1980

**Patricia N. Barrera** (BBA '80), Brownsville, has been elected president of Southmost Business and Professional Women's Club.

**Jane Freeman Deyeso** (JD '80), San Antonio, of Deyeso & Deyeso law firm, was certified in family law by the Texas Board of Legal Specialization in December 1986.

**Kathleen Gray** (BBA '80), Wilmington, Del., has accepted a position as executive vice president and controller with MBank USA in Wilmington. She was formerly with Peat, Marwick, Main & Co. in St. Louis, Mo., where she was the Alumni Association chapter president.

**Maura M. Houston** (Class of '80), has moved from Reston, Va., to Colorado Springs, Colo.

**Terri A. Russell** (BA '80), San Antonio, received an M.D. degree and began a pediatrics residency in Austin.

**Gordon E. Schutze** (BS '80), Houston, has been appointed a chief resident at the Baylor College of Medicine Affiliated Hospitals.

**Richard Secord Jr.** (BA '80, JD '83), San Antonio, is an attorney with Mendelsohn, Heidelberg, Longoria & Beer Inc.

## 1981

**Curtis G. Abate** (BS '81), San Antonio, has entered a general practice dental residency with the U.S. Army.

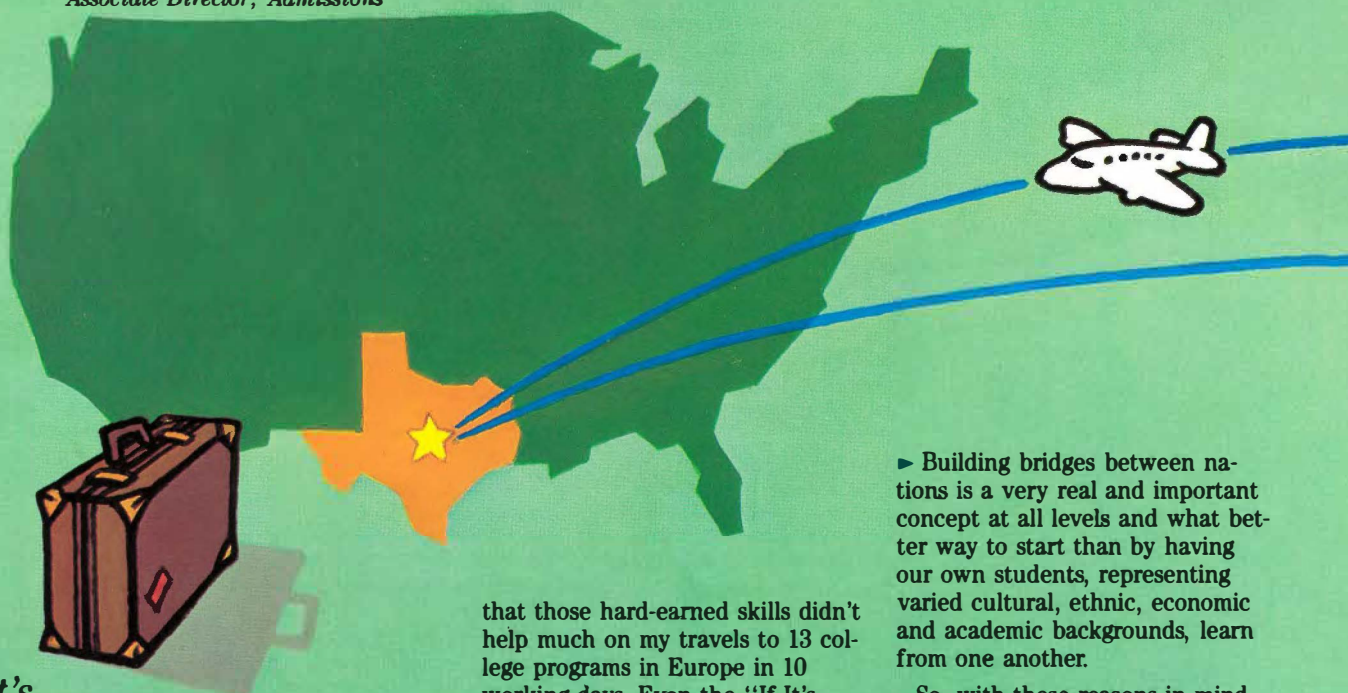
**Angelos Angelou** (MBA '81), Austin, chief economist for the Austin Chamber of Commerce, was a guest speaker at the Taylor Chamber of Commerce.

**Jo Ann Bemrich** (Class of '81), San Antonio, is executive secretary and director of the Society of St. Vincent de Paul.

**Capt. Linda M. Cunningham** (MA '81), is at Hickam Air Force Base, Hawaii.

# Expanding Recruiting Horizons

by Candace Kuebker  
Associate Director, Admissions



**“If It’s  
Tuesday,  
This  
Must Be  
Belgium.”**

I remember a movie in the late '60s that chronicled the exploits of a naive and unsuspecting group of travelers on a European package tour. Viewing it at the age of 13, I remember thinking that although hilarious, it obviously exaggerated the pitfalls and disorientation one encounters traveling en masse in foreign lands. I still believed that the day I embarked on the European Council of International Schools (ECIS) recruiting tour. Now I know better.

I modestly call myself a seasoned traveler. With over 10 years admissions experience at St. Mary's, I've spent endless weeks in metropolitan areas and small towns (many of which I'm trying to forget), searching out high schools for that one student who may indeed be "St. Mary's material." I can read a map at 55 m.p.h., one eye scanning the horizon for stadium lights. I've read Dane Keene's *The Traveling Woman* and I'm adept at building a three-week wardrobe around a skirt, two blouses, four scarves and a pair of earrings. I must admit, however,

that those hard-earned skills didn't help much on my travels to 13 college programs in Europe in 10 working days. Even the "If-It's-Tuesday..." people had two weeks!

You're probably asking yourself, "Why on earth is St. Mary's participating in college recruiting in Europe?" Here are several important reasons why we in the Office of Undergraduate Admissions are exploring territories outside our traditional boundaries.

- ▶ The number of high school graduates nationwide will decrease 15-20 percent between 1980 and 1992.

- ▶ Conversely, the number of international students seeking post-secondary education in the United States is on the rise and will continue to increase dramatically through this century.

- ▶ St. Mary's reputation, location and unique value-centered approach to education make us attractive to these students, many of whom desire a close-knit, family-oriented environment in which to pursue their studies.

- ▶ We at St. Mary's strive to attract a broad cross-section of students from international origins who can benefit from our educational opportunities while adding a special, diverse dimension to our student population.

- ▶ Building bridges between nations is a very real and important concept at all levels and what better way to start than by having our own students, representing varied cultural, ethnic, economic and academic backgrounds, learn from one another.

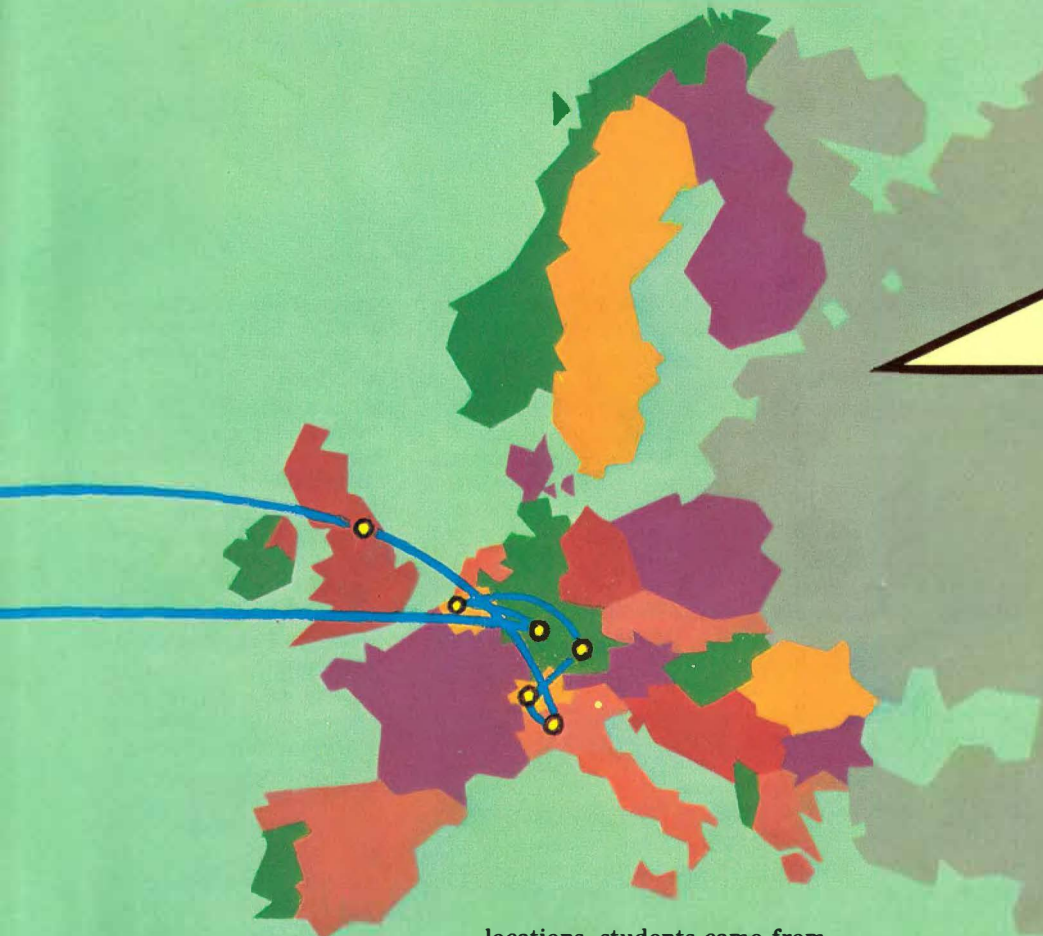
So, with these reasons in mind, the European Council of International Schools tour is an ideal point from which to start.

Our tour group included representatives from 27 colleges and universities ranging in size from 400 to over 17,000 students. St. Mary's was the only Texas school to participate among the 15 states represented.

The tour covered the Netherlands, Belgium (on Tuesday?), Germany, Switzerland, Italy and England. A typical day began at 5:30 a.m., with luggage ready at 6:30 a.m., at which time we had the option of partaking of a leisurely (15 to 20 minute) "continental breakfast." If those two words invoke images other than a hard roll and coffee, you've been sadly misled.

Once a program was completed, we could plan on anything from a one-hour bus ride to an eight-hour train ride to our next destination.

Each program at various American and international schools lasted two to three hours. They began with a general orientation session for all students and parents. A description of our



### European Schools Visited

#### *The Netherlands:*

International School of Amsterdam  
International School of Hague

#### *Belgium:*

International School of Brussels

#### *Germany:*

Stuttgart American High School  
Heidelberg American High School  
Munich International School

#### *Switzerland:*

Zurich Area Schools  
Geneva Area Schools

#### *Italy:*

American School of Milan  
Marymount International School  
of Rome

#### *England:*

Lakenheath American High School  
American Community School

group and program was given, followed by a 15-minute slide show highlighting the colleges and universities present. A special brochure describing each school was distributed. We set up our information tables in cafeterias or gymnasiums, and for a couple of hours, parents and students could browse, talk with us about specific interests, and pick up our publications.

I saw an average of 20 students and parents at each session. Not knowing exactly what to expect (and having spent many a lonely college program in the U.S. reading my and everyone else's brochures), I was pleasantly surprised, not only at the number of interested students, but also at the quality of their academic preparation. Most students in Europe pursue one of three programs: a traditional American high school program; a curriculum leading to the British General Education Certificate (GCE); or the International Baccalaureate (IB) program. Their preparation ranged in quality from good to exceptional.

The students I visited with were as diverse as their varied academic backgrounds and origins. Although our programs were held in only 13

locations, students came from almost 40 secondary schools, some traveling as many as six hours to visit with our group.

The American students I saw had come to Europe from all over the United States. Many whose families were in military service had lived in or around San Antonio at some time and were already familiar with St. Mary's. Others, like a young exchange student from McAllen I met in Geneva, were just plain excited to see someone from home. Several of various nationalities were the children of diplomats who travel extensively. Virtually every student I met was proficient in English and some spoke half a dozen languages or more.

The next couple of years will determine our success in recruiting international students from Europe. Our admissions efforts have also expanded to include South America and, this year, the Far East. Though the ECIS trip (and others like it) are grueling and fast-paced, I believe there are many qualified, young international students out there who can and will benefit from

the St. Mary's educational experience. Perhaps more important, we can learn from their fascinating cultures and vastly different experiences. A bond with the international community is imperative in this day and age and is, indeed, part of the mission of St. Mary's University. ■



Candace J. Kuebker (B.A. '78) has been a member of the admissions staff since 1977. Now associate director of the department, her territory for recruiting undergraduates covers Europe, Arizona, New Mexico, Colorado, Wisconsin, Illinois and the East Coast and Mid-Atlantic states. As well, she is responsible for recruiting at 10 San Antonio high schools. Also alumni of St. Mary's are her brothers, Craig (B.S. '77), an Air Force physician, and David (B.B.A. '87).

**David Leal** (BS '81), San Antonio, is a real estate agent with World Wide Realty.

**Anna M. Pantusa** (BS '81), San Antonio, has received an M.D. degree and has entered a physical medicine and rehabilitation residency in New Orleans.

**Mark A. Rodriguez** (BA '81), San Antonio, received an M.D. degree and has entered a residency in family practice.

**Mark Smith** (BA '81), Arlington, and his wife, Lucy, announce the birth of their first daughter, Betty Luanne, on May 15, 1987.

**Susan J. Watson** (BA '81), San Antonio, has begun a residency in pediatrics in San Antonio.

## 1982

**George Carrum** (BA '82), San Antonio, will enter residency specializing in internal medicine in Houston.

**Paul D. Garcia** (BA '82), Houston, earned an M.D. degree and plans to study internal medicine.

**Jorge A. Guel** (BA '82), San Antonio, received a D.D.S. degree.

**Danny Heep** (BA '82), San Antonio, was signed as a free agent by the San Antonio Dodgers baseball team.

**Michael T. Hernandez** (BBA '82, MBA '87), San Antonio, is a vice president with Republic Bank. His wife, Flora, is a St. Mary's graduate (BBA '82).

**Richard Samudia** (BS '82), San Antonio, received an M.D. degree.

**Caesar M. Ursic** (BS '82), Houston, is continuing his studies of preliminary surgery in Houston.

## 1983

**Yvonne Casso** (BA '83), Laredo, has been named assistant personnel officer at the Laredo National Bank.

**Sandra J. Furtner** (BA '83), San Antonio, has completed dentistry training and plans to enter private practice.

**Jorge A. Garza** (BS '83), Houston, received a medical degree and began a residency in pediatrics.

**Mary Hoffman** (BA '83), San Antonio, is an elementary school teacher with the San Antonio Independent School District.

**Aviva Hopkovitz** (BA '83), San Antonio, has earned an M.D. degree and has entered a pathology residency in San Antonio.

**Juanita Lozano Pineda** (BA '83), San Antonio, received a degree in dentistry and will enter general practice.

**Diana L. Rodriguez** (BA '83), Laredo, has graduated from the University of Texas Medical School at Houston and has been accepted for a residency in pediatrics.

**Christopher Sertich** (BA '83), San Antonio, is married to Erika Olea of San Antonio. He received an M.D. degree and began a residency in anesthesiology.

## 1984

**Rose Mary Alais** (BBA '84, MBA '86), San Antonio, is the owner of World Market Imports. She commissioned a painting of Pope John Paul II that was widely distributed as a poster celebrating his September visit to San Antonio.

**Kenneth D. Brazle** (JD '84), New Braunfels, Texas, has opened an office for the general practice of law at the Faust House.

**Paul Canpolo** (JD '84), has accepted a position as an assistant district attorney in Bexar County. He was formerly with Taylor County.

**John Gittinger** (BBA '84), Dallas, is an insurance commercial underwriter with United States Fidelity Guaranty.

## 1985

**Kym Bowman Benson** (Class of '85), San Antonio, is an anchorwoman with KENS-TV.

**David R. Blackmon** (BA '85), Conroe, Texas, has graduated from Air Force basic training.

**T. J. Connolly** (BA '85), San Antonio, was elected vice chairman of the Santa Rosa Children's Hospital Committee for the Future. He is corporate relations manager and assistant to the chairman of Benson Management Co.

**Brian J. Duddy** (MS '85), San Antonio, is an Air Force captain stationed at Kelly AFB.

**Vicente J. Leija** (BA '85), San Antonio, received an M.A. degree in human sciences from Our Lady of the Lake University.

**Carrie L. Moy** (BA '85), Waco, is studying law at Baylor University.

**Patricia Perkins** (BA '85), Washington D.C., has joined the law firm of Wunder & Diefenderfer as an assistant. The firm specializes in legislation strategy and policy development.

## 1986

**Ingrid K. Bradley** (MA '86), San Antonio, is an Air Force captain stationed at Randolph Air Force Base.

**Cayce Douglas** (BBA '86), San Antonio, has been hired by Lloyd's Jewelers as a computer systems manager.

**Joe M. Gonzales** (BA '86), San Antonio, is the owner of Metro Security Systems, with offices in San Antonio and Austin.

**Michael W. Meier** (JD '86), Victoria, Texas, is on Army duty in West Germany as an assistant judge advocate.

**Mary Murphy** (BBA '86), San Antonio, is the director of marketing for Data Terminals of San Antonio.

**John W. Robertson** (MS '86), Davis, Calif., a captain and pilot in the U.S. Air Force, has received the Air Force Commendation Medal.

**Jo Saldana** (BBA '86), San Antonio, has begun a training program with Continental Airlines. She will be a flight attendant prior to advancement to the personnel department.

**Edna Adame Schroeder** (BBA '86), San Antonio, is employed by State Farm Insurance in the fire and commercial sales division.

**Ramon Trevino** (BBA '86), Von Ormy, Texas, is a staff accountant with Peat, Marwick, Mitchell & Co.

**Patrick West** (BBA '86), Pearsall, Texas, is employed by San Antonio Savings Association as a programmer/systems analyst.

## 1987

**Belinda Arevalo** (BBA '87), San Antonio, has begun work with Aetna Life & Casualty as a property underwriter.

**Catherine D. Babbitt** (JD '87), San Antonio, received the Bureau of National Affairs Law Student Award presented to the graduating student who made the most

satisfactory scholastic progress during the final year of law school. Over 170 law schools participate.

**Monte S. Bains** (BBA '87), San Antonio, is a registered representative with First Investors Corporation.

**Jose Cadena** (BBA '87), Robstown, Texas, is attending the Harvard University School of Law on a full tuition scholarship.

**Elvia L. Elguezabal** (BA '87), San Antonio, is a counselor with Youth Alternatives.

**Cindy D. Evans** (BA '87), San Antonio, is a lab technologist at Medical Center Hospital.

**Richard D. Kleinjan** (BA '87), San Antonio, is a senior photographer with Southwest Research Institute.

**R. J. Muraski Jr.** (BA '87), San Antonio, is serving as a Gold Bar Army recruiter at St. Mary's University until entering an officer training course in Washington, D.C. He will then be permanently stationed at Fort Carson, Colo.

**Christi Rohmer** (BBA '87), San Antonio, is a staff accountant at Ernst & Whinney.

**Julie Van Haute** (BBA '87), San Antonio, has accepted a staff accountant position in the audit department of Arthur Andersen.

**Randy Wisner** (JD '87), San Antonio, is an associate attorney with Martin, Shannon and Drought.

## Marriages

**David B. Kauffman** (BBA '82) and **Leah B. Bumpus** (BBA '87) were married in San Antonio Aug. 15. David is a vice president with M. Espensen Inc., commercial real estate firm, and Leah is an underwriting trainee with Continental Insurance.

**Jorge A. Garza** (BS '83) and **Nora Olvera** (BS '83), Houston, were recently married. Jorge received an M.D. degree and began a residency in pediatrics. Nora is in her third year of medical school.

**Juanita Lozano** (BA '83), San Antonio, and **Oscar Pineda** were married in August. Juanita received a degree in dentistry and will enter general practice.

**Kenneth G. Jensen III** (BBA '84), Brownsville, and **Susan Elaine Ely** of Kansas were recently married.

**Maureen Murphy** (BA '84), Lubbock, a recent graduate of Texas Tech Medical School, and **Brian Benschoter** (BA '84) were married June 27.

**Ronald N. Oglesby** (BA '84), Tulsa, Okla., and **Margaret Edmiston** (BBA '84) were married July 18. Ronald is a fourth-year osteopathic medical student on rotation in Joplin, Mo. Margaret is a territory manager with Pfizer Pharmaceuticals.

**James R. Schorp** (BS '85), San Antonio, and **Terri Tolson** of Pearsall, Texas, were married May 9. James is an engineer at Kelly Air Force Base. Terri is a senior finance major at St. Mary's University.

**Michael Dize Jr.** (BA '86) and **Teresa A. Cumpian** (BA '87), Manassas, Va., were married May 9 in the St. Mary's University Assumption Chapel. Teresa teaches second grade at Holy Spirit School in Virginia.

**Houston C. Munson III** (JD '87), Gonzales, Texas, and **Janice Dickson** (JD '85) were married.

## In Memoriam

**Alfred W. Chalkley** (Class of '21), San Antonio, 85, died June 10. He was a rancher and among the founding directors of the San Antonio Livestock Exposition.

**Robert L. Engbrock** (Class of '24), Seguin, 79, died recently. He was a longtime employee of the Southland Insurance Co. and a former Kiwanian of the Year.

**Frank "Dutch" Daehne** (BA '30), Bay City, Texas, died May 7. He lettered all four years in football, basketball and baseball and was inducted into the St. Mary's Athletics Hall of Fame in 1984.

**Donald D. Belto** (BBA '49), Helotes, Texas, 58, died June 20. He was vice president of finance and corporate secretary at Southwest Research Institute.

**George R. Donnell** (BSC '47, JD '57), San Antonio, 86, died in March. He was an attorney and a CPA.

**Oscar Cantu** (BA '66), Austin, 42, died recently. He was an educator in San Antonio and Austin and director of elementary management and special services in the Austin School District.

**Henry Casanova** (BA '66), San Antonio, 44, died June 17.

**Lisa F. Walder** (MBA '86), San Antonio, died in December 1986.

## Fall 1987 Corrections

### Who is She?

The Homecoming photo page in the 1987 Spring/Summer Gold & Blue incorrectly identified a woman at the Mass as Jane Busby. Can anyone identify the "mystery woman"?

**Malcolm Kirkland** (MBA '72) received his degree in 1972, not in 1971 as listed.

**Joe Pina** (BA '75), San Antonio, was surprised to read in Class Notes that he is a former judge. He is a municipal court judge for the City of San Antonio.

### Classnotes Guidelines

1. Individuals must be graduates or have attended St. Mary's University.
2. Good quality black and white portrait photographs are welcomed.
3. Announcements regarding weddings, births, etc. will not be printed until after the event has occurred.
4. Candidates for political office will not receive coverage until election results are known.
5. Class year is determined by the calendar year of graduation. If more than one degree has been earned from St. Mary's, each will be listed.
6. Tributes are printed about deceased alumni. The information is deemed accurate if the source is a family member or printed media.
7. The editor reserves the right to edit information submitted.





## THE PRESIDENT'S CLUB

In 1916, young Dwight D. Eisenhower, then at Fort Sam Houston, coached St. Mary's football. He could not know that 71 years later the Eisenhower connection with the school would come full circle.

This fall, Ike's grandson, David Eisenhower, author of a best-seller about his grandfather, completed that circle. He was guest speaker at the annual St. Mary's President's Club dinner.

Like the Eisenhowers, President's Club donors are treasured links with St. Mary's.

To become an esteemed member of the St. Mary's President's Club, call 436-3138.

